

ALTISSIMA



BROUGHT TO YOU BY



al barari
dubai

Luxury, naturally.

ALTISSIMA





AL BARARI:THE GREEN HEART OF DUBAI

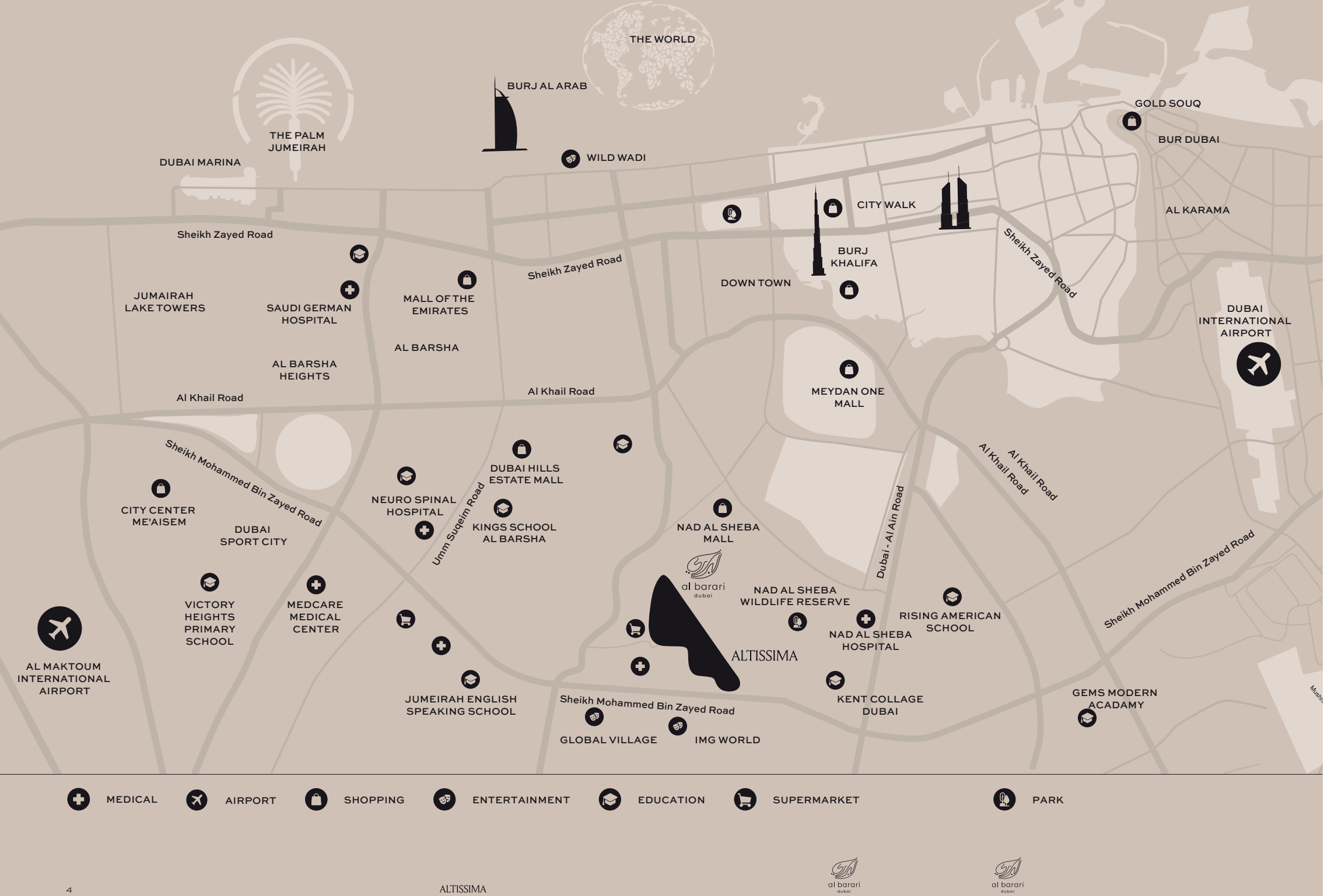
The Green Heart of Dubai

A sanctuary from the city, an endless source of inspiration, a peaceful moment in nature. A place you can constantly discover yet feels so familiar. Welcome to Al Barari.

Derived from the Arabic word ‘wilderness’, Al Barari is the region’s first integrated luxury and active eco-conscious development. Curated for those looking for a more holistic,

sustainable way of life, this botanical sanctuary seamlessly blends nature with luxurious living. A space where like-minded individuals can live, stay, play, shop, dine and work – their way.

Discover the nexus between luxury and lifestyle, all in the heart of Al Barari.



LOCATION

Experience calm, amidst the chaos.

Strategically located just a stone’s throw from the city, this award-winning, eco-friendly development is a nature lover’s dream. A quaint, eco-conscious neighbourhood, rich in culture, untamed beauty and untold stories, with over 15.3 million square feet of themed gardens, landscaped lakes and freshwater streams.

A mere 15 minutes from Dubai’s most iconic destinations, including the Burj Khalifa, Dubai Marina, and Palm Jumeirah, Al Barari is an oasis that unites urban convenience with the serenity of nature.

BURJ KAHLIFA	16 MINUTES
PALM JUMEIRAH	22 MINUTES
CITY HOSPITAL	15 MINUTES
DUBAI AIRPORT	15 MINUTES

Al Barari Masterplan



ALTISSIMA

A new era of luxury living.

Immerse yourself in the heart of
Al Barari's legacy - Altissima.



Designed as a livable masterpiece, this extraordinary development draws inspiration from the sacred Tree of Life. Just as the tree symbolises growth, connection, and the interweaving of life's threads, Altissima becomes a sanctuary where dreams don't just flourish – they thrive.

More than a collection of stunning villas and state-of-the-art facilities, Altissima is a visionary project that transcends the ordinary. Capturing the essence of luxury, it stands as a canvas for creativity, an ode to boundless possibilities, and a manifestation of a life well-lived.

It's a new way to experience living, designed for a discerning few.

Altissima's Master Plan



23 UNITS	
2 TYPES	
PLOT SIZES	18,000-20,000 sqft
BUA SIZE	27,000 sqft

Facilities

With a unique fusion of wellness, recreation, and natural beauty, Altissima offers a lifestyle where indulgence knows no bounds.



Altissima Facilities

CLUB 33

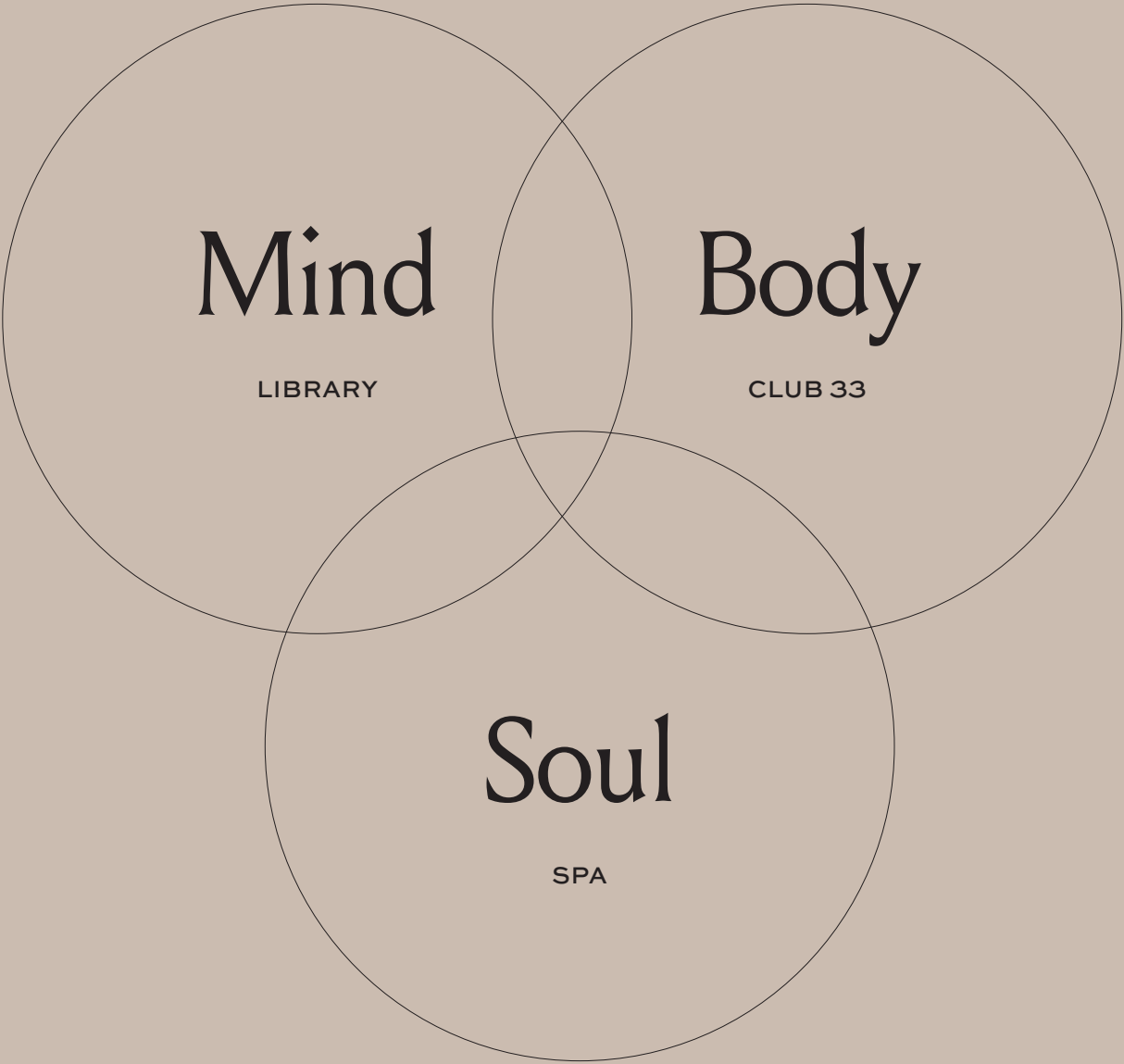
Discover a haven of recreation at Altissima’s Sports Hub. Enjoy four Padel Courts, a Bowling Alley, Billiards, Table Tennis, and a cozy Café – your perfect escape for leisure and friendly competition.

THE LIBRARY

A sanctuary for knowledge preservation and a relaxed business center.

HEART AND SOUL

A world-class retreat featuring massage rooms, saunas, ice baths, pools, hammams, and a full-service hair, nails beauty salon and much more.



The Library

Elevating the essence of holistic living, Altissima proudly introduces a captivating library as part of its exceptional offerings. Envisioned as an education-focused haven, this delightful space transcends the ordinary, providing residents with a serene and inspiring environment for intellectual pursuits. The library at Altissima is not just a collection of books; it's a reflection of our commitment to cultivating knowledge and fostering a love for learning. Embrace the charm of a lovely working space, tailor-

made for concentration and creativity, where the ambiance effortlessly combines the tranquility of a traditional library with the dynamic energy of a modern co-working space. In an era where such cultural sanctuaries are becoming a rarity, particularly in most residential communities in Dubai, Altissima stands as a beacon, rekindling the joy of exploration and learning within the heart of our community.





BODY

Sports Complex

CLUB 33



Experience unparalleled sports and leisure at Altissima's state-of-the-art Sports Complex, Club 33. Engage in friendly competition at our bowling alley, perfect your strokes with pool and tennis facilities, and savor a moment of respite at our cozy café. Elevate your game on our innovative 4 padel courts,

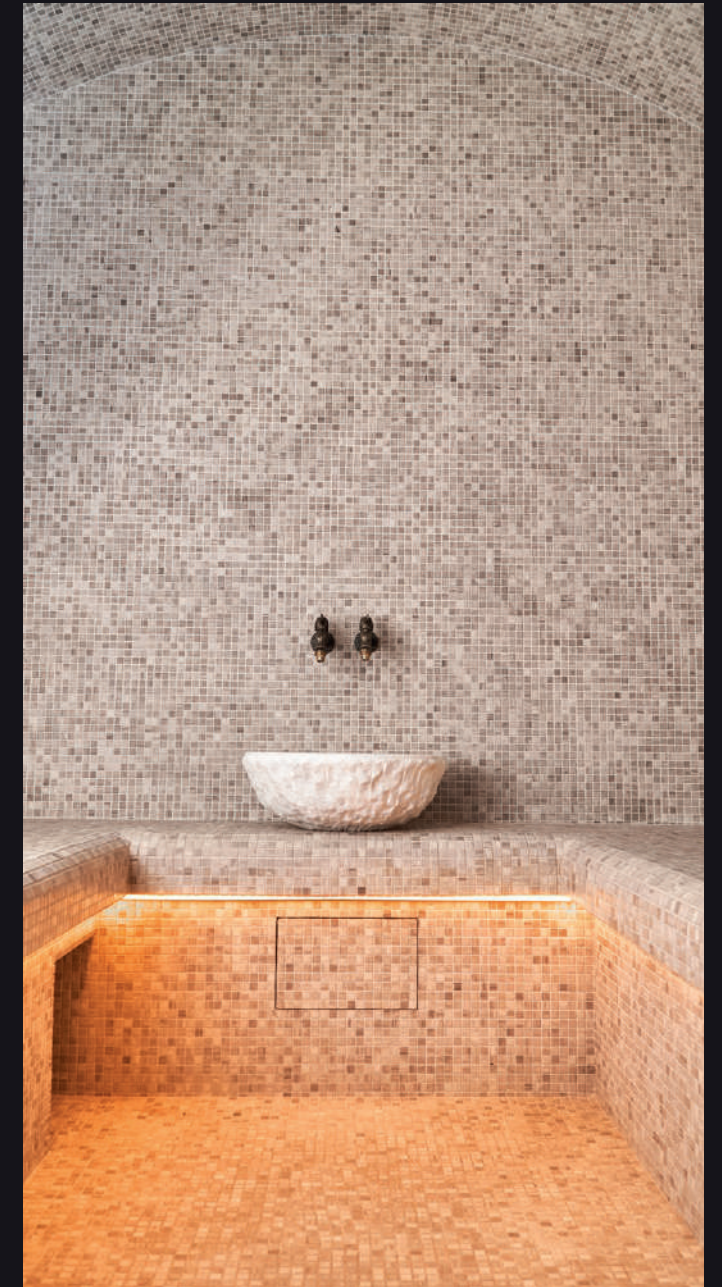
with 2 conveniently located on the ground floor and 2 more perched atop for a unique and exhilarating experience. Altissima invites you to a world where sports and leisure seamlessly intertwine, creating a haven for enthusiasts of all kinds.

SOUL

Heart & Soul Spa

Discover serenity at Altissima's Heart and Soul Spa, where luxury meets rejuvenation. Allow our skilled therapists to guide you on a journey of tranquility with bespoke treatments designed to soothe your body and elevate your spirit. Indulge in the essence of

relaxation in our award-winning spa oasis, where every detail is tailored to create an atmosphere of pure bliss. Luxuriate in the calming ambiance, unwind in the steam rooms, and let the Heart and Soul Spa be your haven for holistic well-being.



The Lagoon



Lagoon Facilities

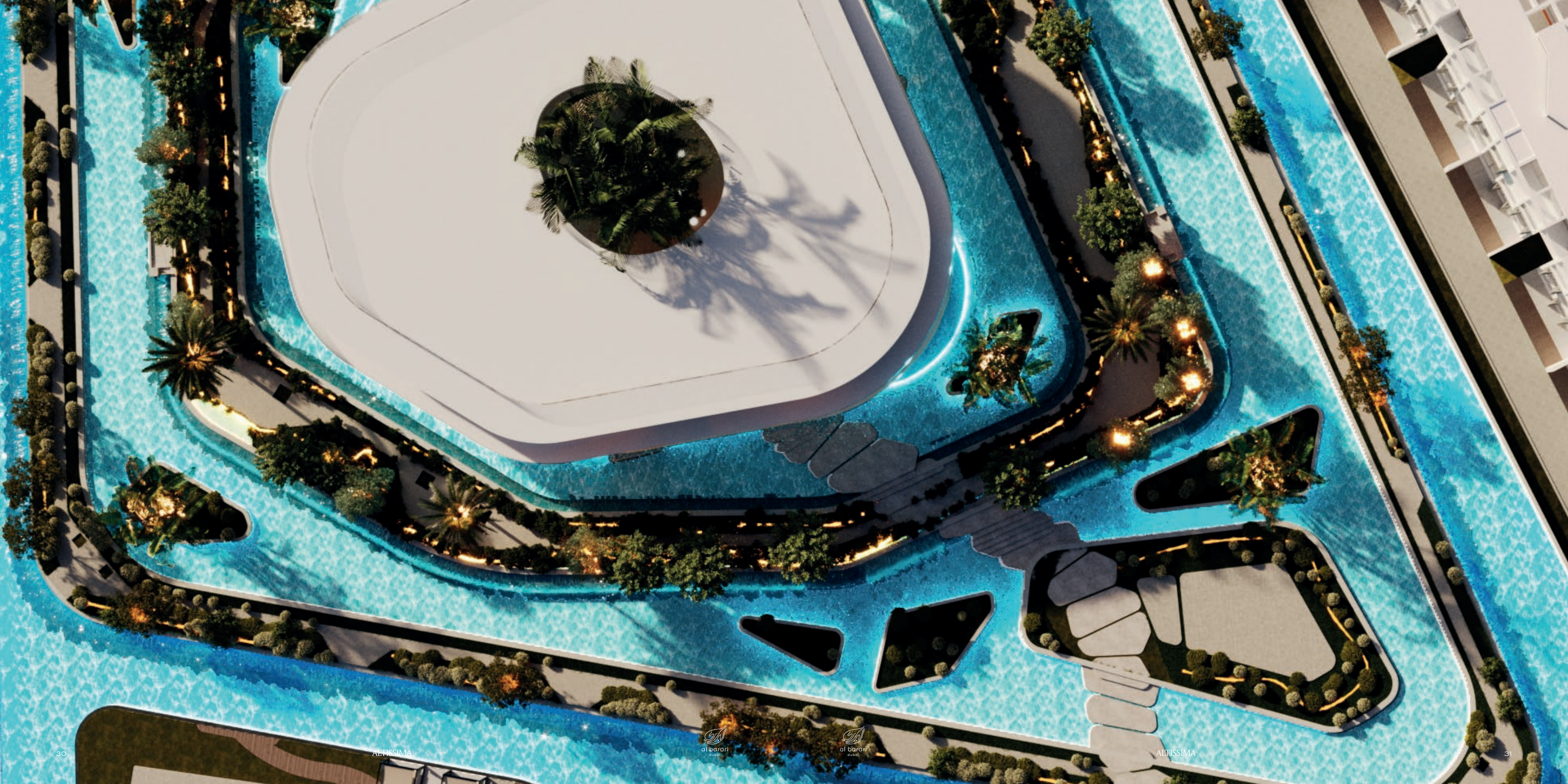


UAE's longest pool, 400m length.
Altitude Gym: State-of-the-art with lagoon views.
Tennis courts and beach volleyball.
Large man-made beach with F&B outlets.
Skate Park for added excitement.

Indulge in the state-of-the-art gym, a true marvel that appears to 'float on water.'

Treat yourself to our award-winning spa, engage in a friendly game of tennis on our top-tier courts, or relax at the family beach club – all offering stunning beach lagoon views.

A haven for budding imaginations, Altissima also boasts a dedicated kids' play area with a volleyball court and a skate park. For sports enthusiasts, enjoy our community hub, featuring facilities like billiards, table tennis, foosball, and a bowling alley.



Altitude Gym



Choose your pace of life.

The gym stands not as an intrusive structure, but as a respectful complement to its natural surroundings, preserving the island's breathability, openness and expansive views. Crowning the gym's rooftop lies a stunning oasis - a space dedicated for rest and contemplation while sipping on a healthy, post-workout drink—all overlooking skyline views of Dubai.



Located within the development, Al Barari unveils a design masterpiece—an extraordinary, state-of-the-art gym situated on an island within the lagoon.

This visionary project is a testament to architectural brilliance and a deep appreciation for natural aesthetics. Inspired by the Jasmine flower, renowned for its understated beauty, the gym is an inspirational haven for health and well-being - subtly magnificent yet profoundly influential.



23 Villas

7 bedrooms

Villas

Unit Type One

SITE PLAN

KEY FEATURES

Spacious swimming pool

Tranquil water feature

Serene garden setting

Poolhouse

BBQ area

Sunken seating with a view of the swimming pool

Altissima planter



Unit Type Two

SITE PLAN

KEY FEATURES

Expansive swimming pool
Tranquil water feature
Ample garden space
Convenient 3-car guest parking at the front
Pool house featuring a dedicated kitchen and bar
BBQ area
Sunken seating with a view of the swimming pool
Poolside bar
Altissima planter



Materials

Exterior Materials

1. External Wall

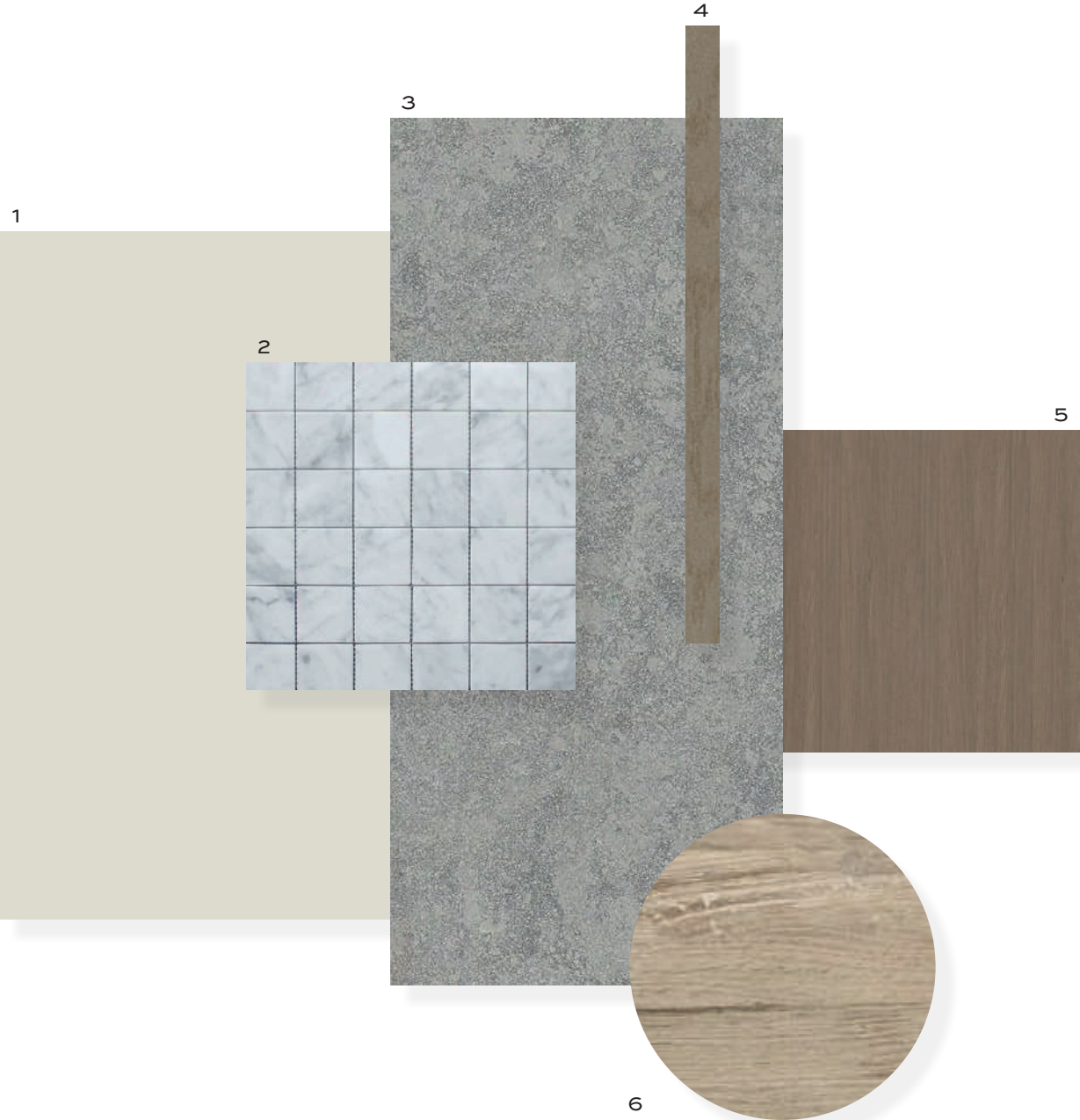
2. Mosaic Tiles

3. Pool Bar Top

4. Metal Fins

5. Pool Bar Cabinets

6. Terrace Floor & Walls



Interior Materials

1. Floors (*Bedrooms, walking closet, show kitchen, living dining*)

2. Internal doors & wooden ceiling (*entrance and all floor corridor, staircase floor*)

3. Kitchen counter tops

4. Bathrooms, powder room, spa

5. Vanity Basin, Bathroom floor and wall

6. Gym flooring

7. Basement Lobby, Spa, Living Dining, Show Kitchen, Bedrooms, Dressing



An experience, everytime
you arrive home.

ALTISSIMA FRONT VIEW



ALTISSIMA FRONT VIEW NIGHT





STREET VIEW FROM RIGHT SIDE



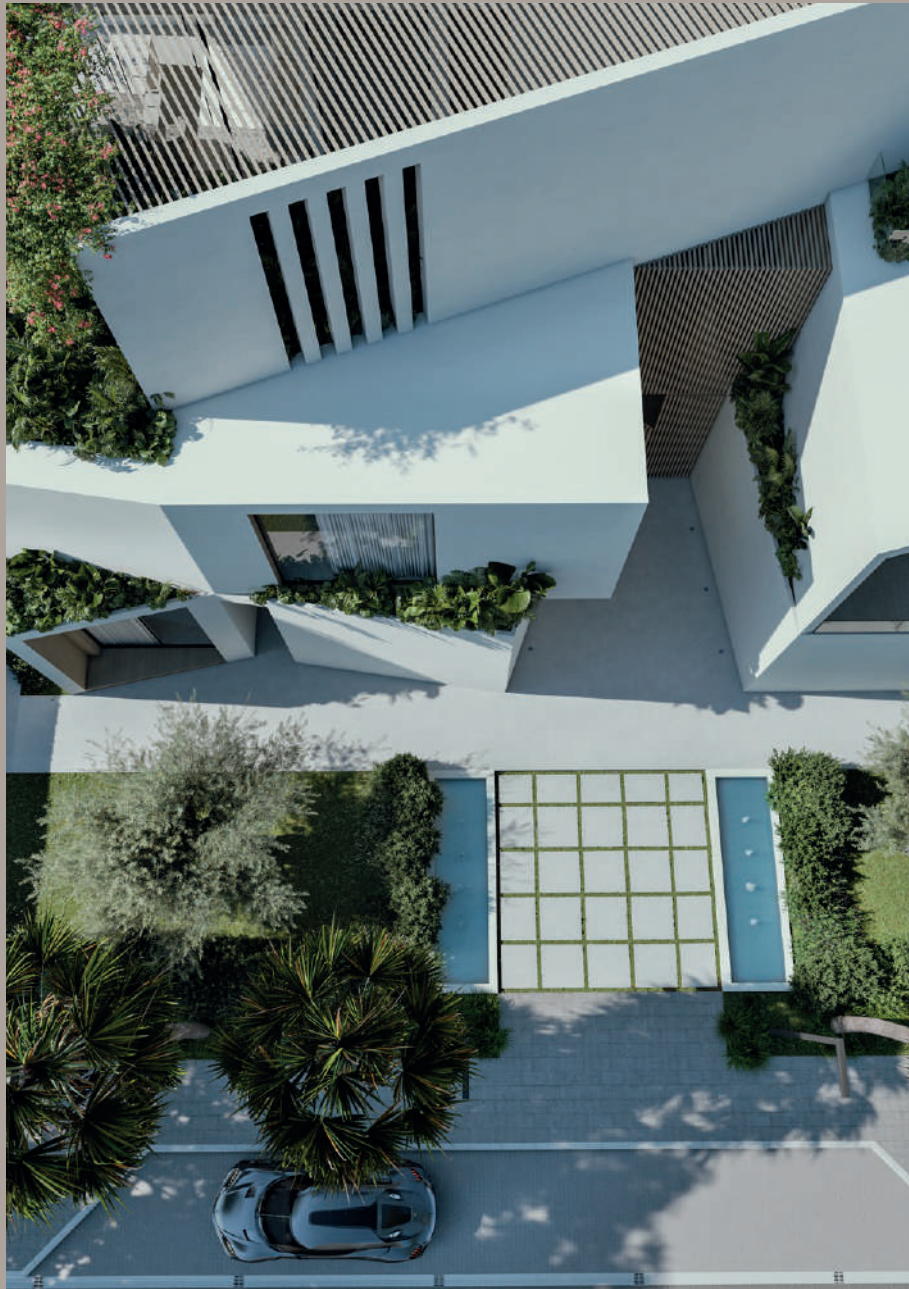
STREET VIEW FROM LEFT SIDE



MAIN ENTRANCE



CORNER VIEW TO OFFICE
ROOF TERRACE (JUNGLE)



TOP VIEW FROM ROOF TERRACE
(JUNGLE) DOWN TO ENTRANCE



MAIN ENTRANCE VIEW UP



STREET VIEW NIGHT



STREET VIEW FROM RIGHT SIDE

A place to be at
one with nature.

ALTISSIMA REAR VIEW



ALTISSIMA REAR VIEW NIGHT







SUNKEN SEATING



ROOF TERRACE



BACKYARD CORIDOR VIEW



GARDEN POOL VIEW



GARDEN POOL VIEW



POOL VIEW



Floorplans

Floorplans



Basement
809.5 sqm / 8,712 sqft



Ground Floor
637.1 sqm / 6,857.7 sqft



First Floor
550.1 sqm / 5,920.08 sqft



Roof
530.4 sqm / 5,709.4 sqft

TOTAL AREA 2,527.1 SQM / 27,199.18 SQFT

AMENITIES

- | | | |
|-------------------------|-----------------------------|---------------|
| Double Height Entry | His and Hers Walk-in Closet | Roof Lounge |
| Double Height Spaces | Nanny Room | Office |
| Basement Car Gallery | Driver's Room | Pool House |
| Formal Living Area | Maid's Room | Water Feature |
| Two Family Living Areas | Sunken Seating | Gym and Spa |
| Guest Suite | Home Cinema | |

A setting to grow,
connect and inspire.





STAIRS AND COURTYARD



FAMILY LIVING



FAMILY LIVING



POWDER ROOM GROUND FLOOR



SHOW KITCHEN VIEW TOWARD
FAMILY LIVING AND POOL



SHOW KITCHEN VIEW TOWARD COURTYARD
AND FORMAL LIVING CORRIDOR





FAMILY LIVING TOWARD POOL



FAMILY LIVING TOWARD POOL NIGHT

FAMILY LIVING TO POOL AND POOL HOUSE



FAMILY LIVING TO COURTYARD
AND FORMAL LIVING ACCROSS





FIRST FLOOR TO FAMILY LIVING
AND LOWER FLOORS

STAIRS TO FIRST FLOOR



FIRST FLOOR TO FIRST FLOOR
LANDING (VIEW TO STAIRS TO ROOF)



MASTER BEDROOM



MASTER BEDROOM VIEW TOWARD
GARDEN AND POOL HOUSE



MASTER BATHROOM



MASTER WALK-IN CLOSET



MASTER BEDROOM COURTYARD



TYPICAL BATHROOM



ROOFTOP LOUNGE





OFFICE VIEW

ROOF TOP TERRACE VIEW
LEFT SIDE (JACUZZI)



ROOF TOP LOUNGE BAR TO RIGHT TERRACE VIEW

ROOF TOP TERRACE VIEW
RIGHT SIDE (LOUNGE SIDE)





GYM VIEW TOWARDS COURTYARD AND PARKING



GYM VIEW TOWARDS SPA
AND GYM ENTRANCE DOOR



SPA VIEW TOWARDS GYM

SPA VIEW







ALTISSIMA




al barari
dubai