

The Astera

INTERIORS BY ASTON MARTIN



DARGLOBAL

Joint Development Partner



AARVEES

THE MOST DESIRABLE LUXURY RESIDENCES IN THE WORLD

IMMERSE YOURSELF IN
UNWAVERING
BEAUTY





EXPERIENCE THE
FIERCELY INDEPENDENT
ISLAND SPIRIT



DISCOVER
EXCEPTIONAL
ENGINEERING



The Astera

INTERIORS BY ASTON MARTIN



DARGLOBAL





BIRTH OF A LEGEND

ASTON MARTIN

The remarkable story of Aston Martin began on January 15th, 1913, when founders Robert Bamford and Lionel Martin established Bamford and Martin Limited, operating from a modest workshop on Henniker Mews in London. Their vision of crafting cars renowned for impeccable design and superior performance captured the public's imagination, a fascination that endures even after a century.

In 1914, the name Aston Martin was adopted, a fitting choice inspired by Lionel's success at the Aston Hill Climb in Buckinghamshire, England.

Driven by a spirit of competition from the outset, Aston Martin has evolved into an iconic brand synonymous with artisanal luxury, timeless elegance, exceptional performance, and triumphs in international motorsport since those pioneering days.



DARGLOBAL

ENGINEERING THE WORLD'S MOST DESIRABLE

DRIVEN BY BRITISH INGENUITY

Infused with the spirit of British ingenuity, The Astera, Interiors by Aston Martin, epitomizes the seamless fusion of bespoke style, cutting-edge material science, meticulous craftsmanship, and unparalleled functionality, resulting in the creation of the world's most desirable luxury residences.

In collaboration with DarGlobal, this exceptional blend of expertise and innovation has culminated in the birth of The Astera, an exclusive residential tower, where every detail reflects a commitment to excellence and sophistication.





AUTHENTIC ISLAND LIVING

ONLY 60 MIN AWAY FROM DUBAI

Cushioned along the pristine shores of Ras Al Khaimah lies Al Marjan island, one of four exquisite man-made coral-shaped islands that extend into the azure waters of the Arabian Gulf.

The Astera adds to the allure of the island, just 60 minutes away from the vibrant city of Dubai, residents can enjoy an elevated lifestyle that seamlessly blends seclusion and convenience.

AL MARJAN ISLAND

THE WONDERS OF COASTAL LIVING

in Ras Al Khaimah

With its lush landscapes and diverse marine life, Al Marjan Island provides a picturesque setting and unparalleled experiences that cater to every desire. You can bask on pristine beaches, enjoy world-class resorts, luxury hotels, retail outlets, and a wide range of recreational activities.

With its breathtaking sunsets, vibrant nightlife, and exceptional amenities, living in The Astera, on Al Marjan Island, not only embodies, but elevates, the wonders of coastal living.



AL MARJAN ISLAND, UAE



45 min
DUBAI INTERNATIONAL AIRPORT



60 min
DUBAI MALL



60 min
DUBAI INTERNATIONAL FINANCIAL CENTRE



PERFECTLY LOCATED

00 min
Your Direct Beach Access

03 min
Al Marjan Island Resort & Spa

04 min
Al Marjan Island Beach Club

05 min
Al Marjan Island Amphitheater
(Event Venue)

05 min
Wynn Resort

06 min
DoubleTree by Hilton Resort & Spa
Marjan Island

06 min
Al Marjan Island Boulevard
(Shopping and Dining Area)

06 min
Al Marjan Island Promenade
(Scenic Walkway)

07 min
Marjan Beach

27 min
The Ritz-Carlton Ras Al Khaimah,
Al Hamra Beach





PANORAMIC VIEWS

OF THE ARABIAN GULF & DIRECT BEACH ACCESS

The Astera is situated in a location that epitomizes the spirit of excitement and elegance, mirroring the brand's renowned prestige. Nestled within one of the prime waterfront locations in Al Marjan Island, the residential tower offers sweeping vistas of the Arabian Gulf, the city's iconic skyline, and the bustling island.

Residents will enjoy direct beach access within the vibrant and rapidly expanding greater downtown area of Ras Al Khaimah. This includes the bustling neighborhoods of the island, the luxury resorts, and attractions, each brimming with an array of amenities to explore and indulge in.

MASTERFULLY DESIGNED
BY THE LEGENDARY
ASTON MARTIN

Crafted to harmonize with the surrounding landscape of Al Marjan Island, each residence is designed to emulate the dynamic flow of a power wave, ensuring breathtaking views from every angle.

Aston Martin, a brand synonymous with luxury, innovation, and cutting-edge design, brings its expertise to the interiors of these residential tower. The brand's signature style, featuring elegant lines, premium materials, and a sophisticated aesthetic is reflected in every detail.



Disclaimer: Illustrative concept visuals, subject to final interior designs



INTERIORS

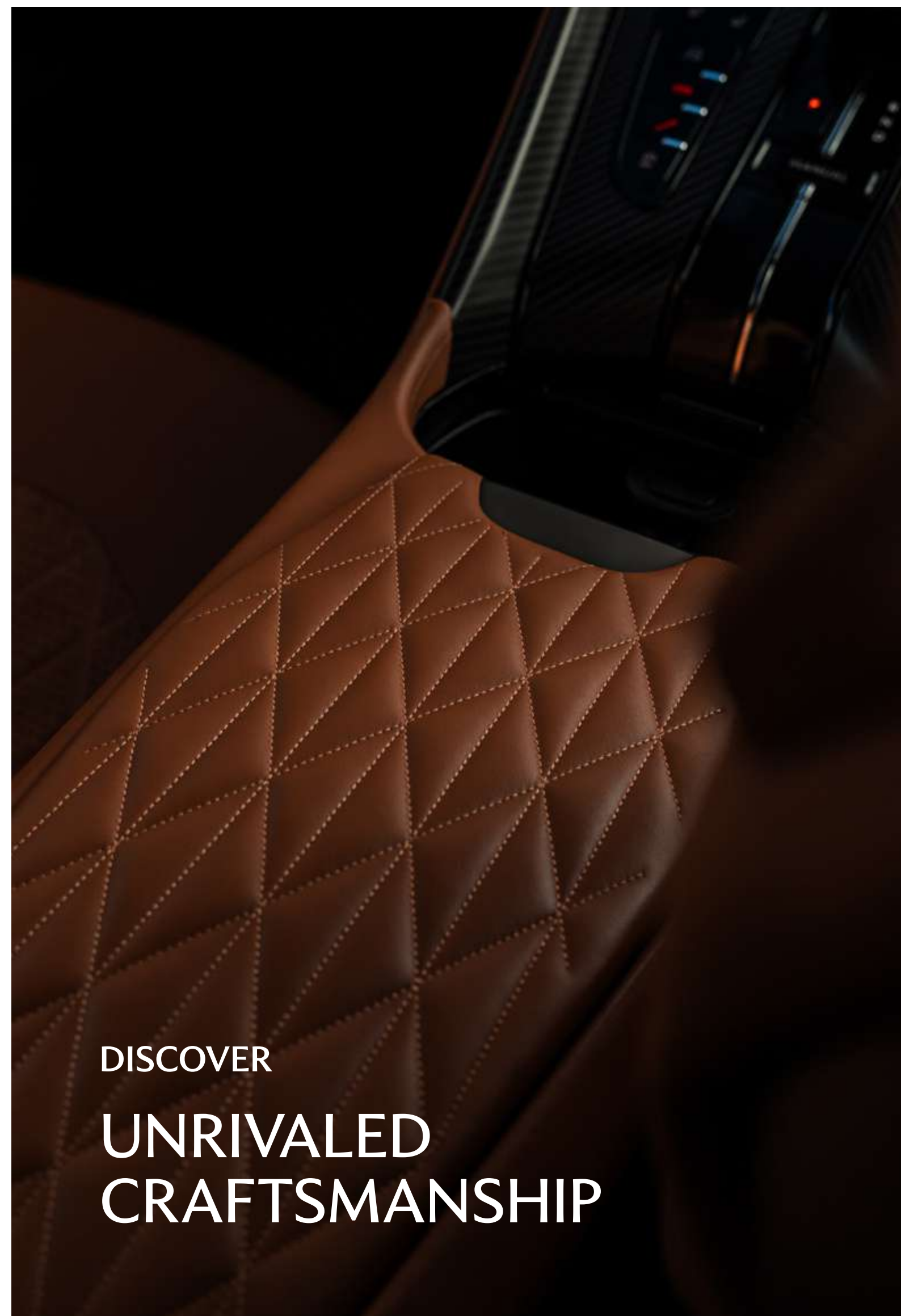
PASSIONATELY DESIGNED

Inspired by the sleek lines and dynamic forms of the Aston Martin product, the interiors of the residences are a testament to over 110 years of British ingenuity, craftsmanship, and material science.

A plethora of rich materials such as fine leather, polished metals, and exotic woods are seamlessly integrated into the spaces, exuding performance and bespoke style.



Disclaimer: Illustrative concept visuals, subject to final interior designs





DETAILS

METICULOUSLY CRAFTED

Each meticulous detail elevates the living experience, ensuring optimal performance and comfort.

With a commitment to excellence, The Astera, Interiors by Aston Martin, offers a bespoke lifestyle experience that embodies the essence of luxury living.



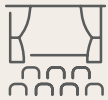
Disclaimer: Illustrative concept visuals, subject to final interior designs

CREATURE COMFORTS

FOR THE DISCERNING FEW



At the podium of the tower, residents are treated to a range of world-class amenities, including direct beach access. From an infinity pool offering breathtaking views of the ocean to a scenic walk track and lush green spaces, every corner invites relaxation and rejuvenation.



Indoor cinema



Fitness centre



Multipurpose hall



Kids play area



Yoga lawn



Spa



Infinity pool



Pool bar



Direct beach access

WORLD-CLASS
AMENITIES DECK

- 1

Indoor Cinema
- 2

Fitness Centre
- 3

Multipurpose Hall
- 4

Kids Play Area
- 5

Yoga Lawn
- 6

Spa
- 7

Infinity Pool
- 8

Pool bar





EVERY SENSE
EMPOWERED

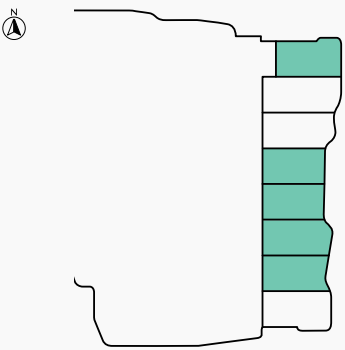


FLOOR PLANS

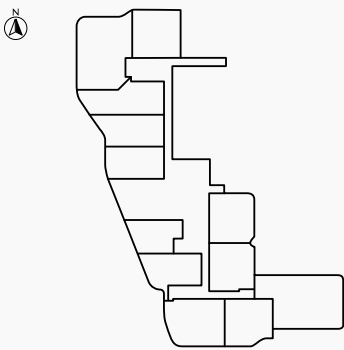
3 BEDROOMS VILLA TYPE A

SEA & ISLAND VIEW

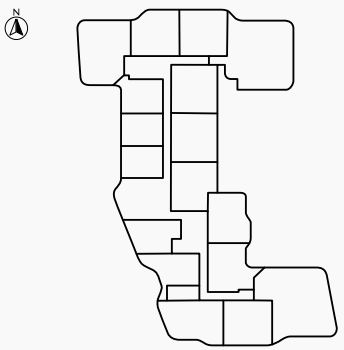
FLOOR
GROUND



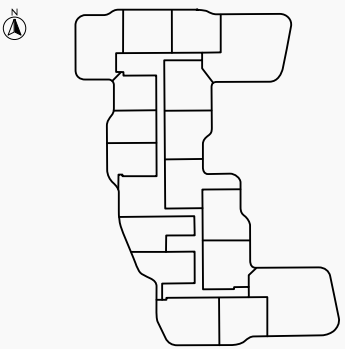
FLOOR
2



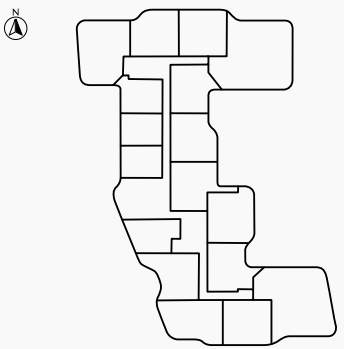
FLOOR
3



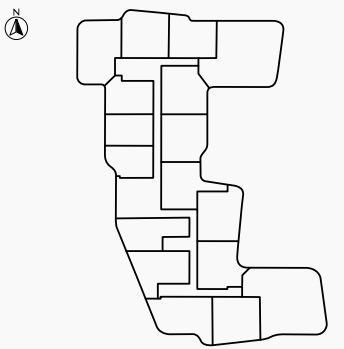
FLOORS
4, 8, 11, 13, 16



FLOORS
5, 7, 10, 12, 14



FLOORS
6, 9, 15



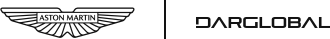
BEACH FRONT VIEW

RESIDENCE	SQM	SQFT
Internal Area	195	2,098
Baclony Area	33 - 44	360 - 476
Total Built up Area	228 - 239	2,456 - 2,573

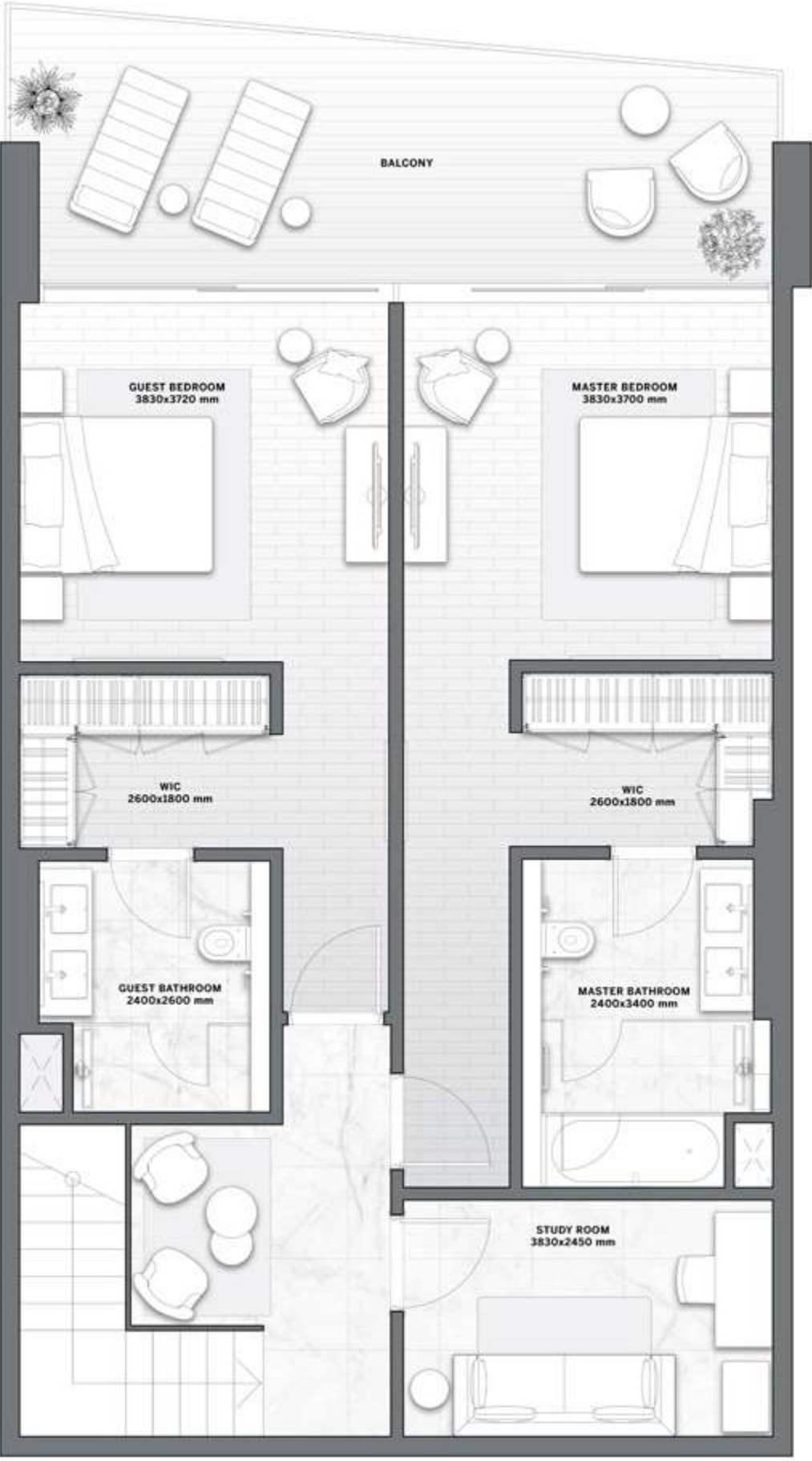
Disclaimer: All pictures, plans, layouts, information, data and details included in this brochure are indicative only and may change at any time up to the final 'as built' status in accordance with final designs of the project, regulatory approvals and planning permissions. All accessories and interior finishes such as wallpaper, chandeliers, furniture, electronics, white goods, curtains, hard and soft landscaping, pavements, features, gym, and other elements displayed in the brochure, or between the plot boundary, are not part of the unit and are shown for illustrative purposes only.

The Astera

INTERIORS BY ASTON MARTIN



LOWER LEVEL

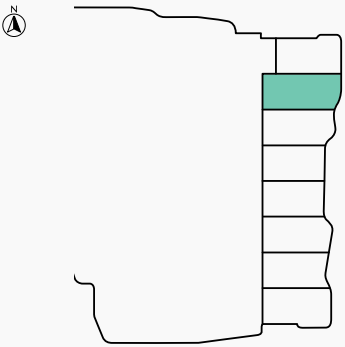


UPPER LEVEL

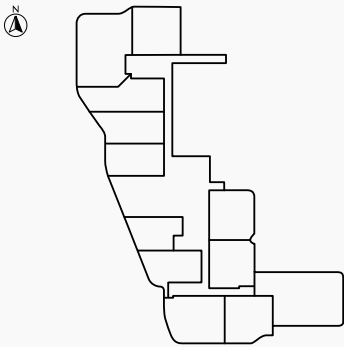
3 BEDROOMS
VILLA TYPE B

SEA & ISLAND VIEW

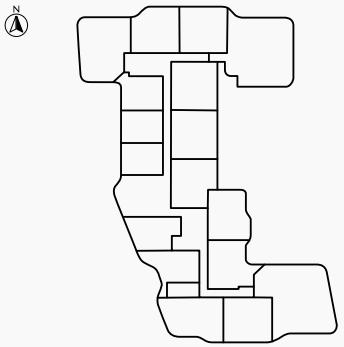
FLOOR
GROUND



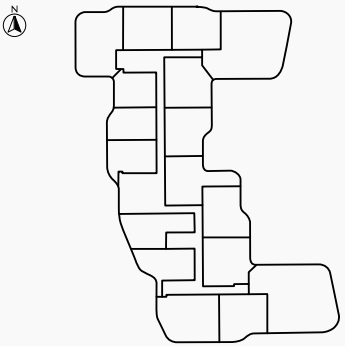
FLOOR
2



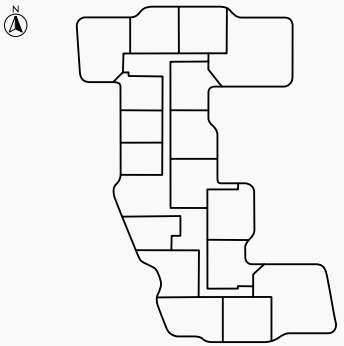
FLOOR
3



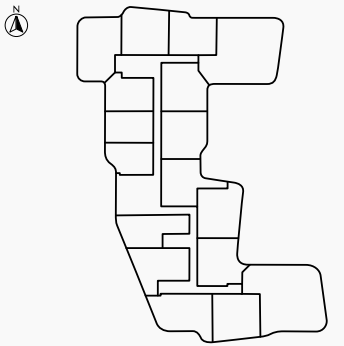
FLOORS
4, 8, 11, 13, 16



FLOORS
5, 7, 10, 12, 14



FLOORS
6, 9, 15

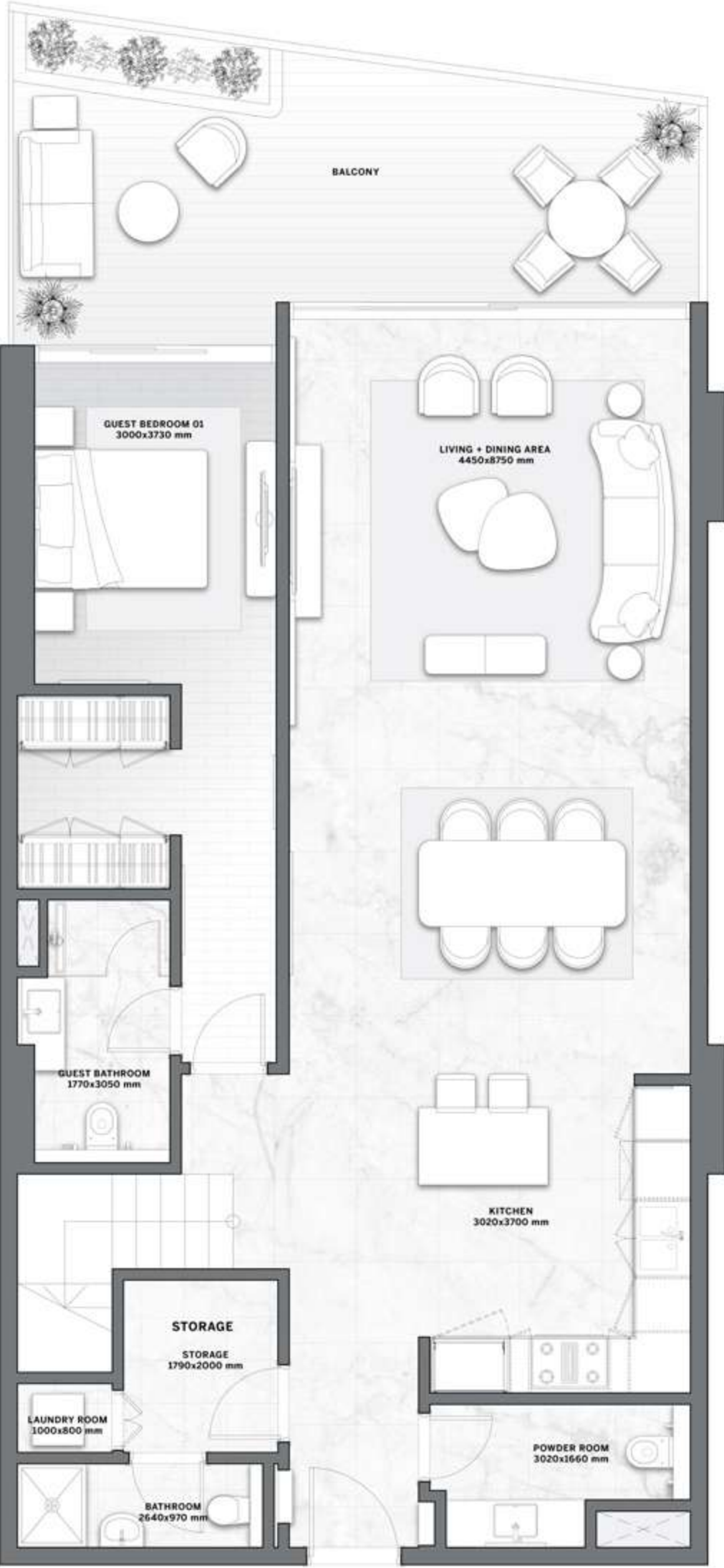
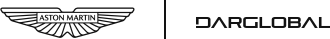


BEACH FRONT VIEW

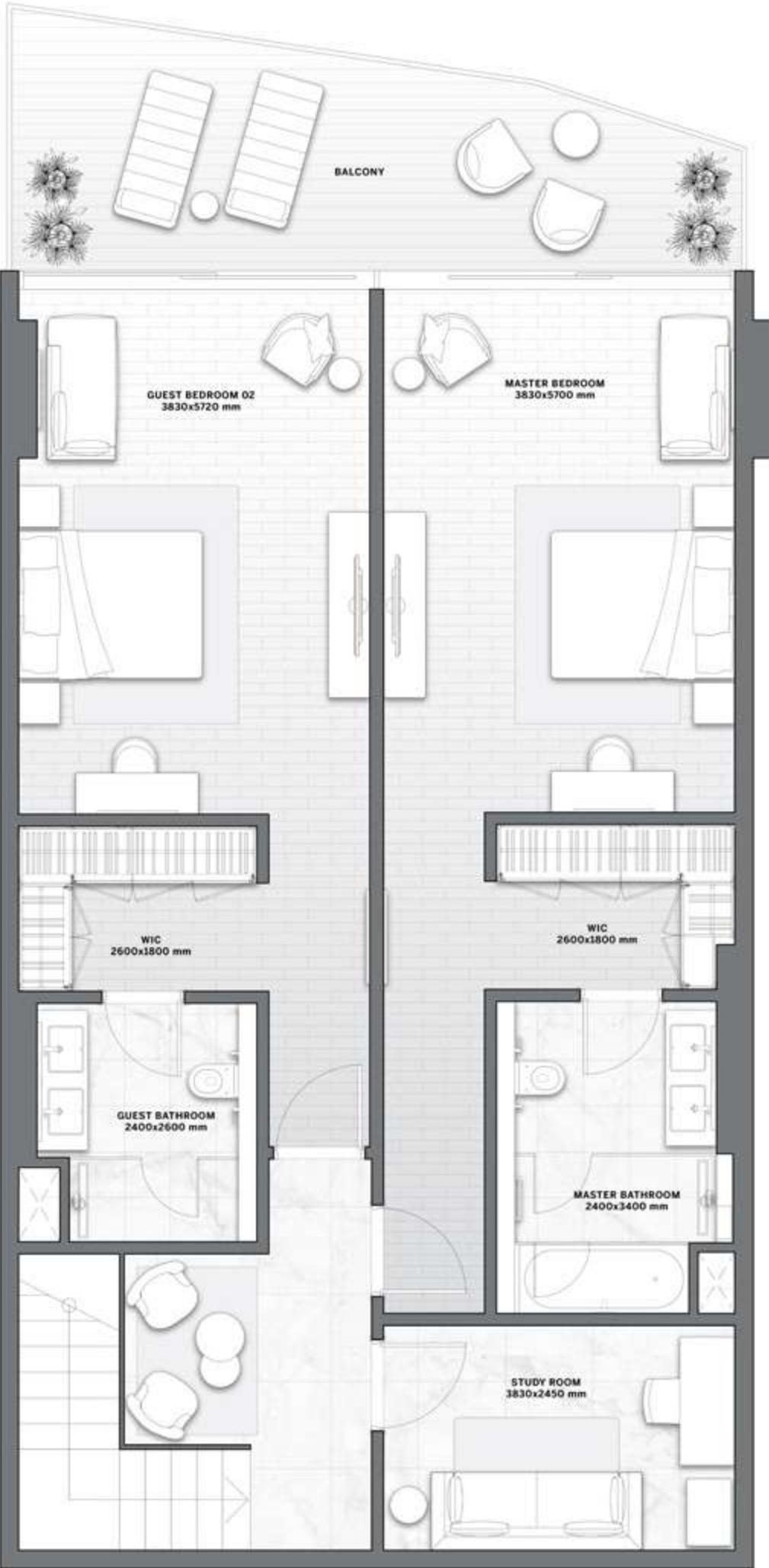
RESIDENCE	SQM	SQFT
Internal Area	226	2,431
Baclony Area	41	445
Total Built up Area	267	2,876

Disclaimer: All pictures, plans, layouts, information, data and details included in this brochure are indicative only and may change at any time up to the final 'as built' status in accordance with final designs of the project, regulatory approvals and planning permissions. All accessories and interior finishes such as wallpaper, chandeliers, furniture, electronics, white goods, curtains, hard and soft landscaping, pavements, features, gym, and other elements displayed in the brochure, or between the plot boundary, are not part of the unit and are shown for illustrative purposes only.

The Astera
INTERIORS BY ASTON MARTIN



LOWER LEVEL

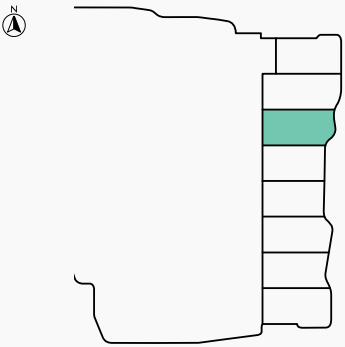


UPPER LEVEL

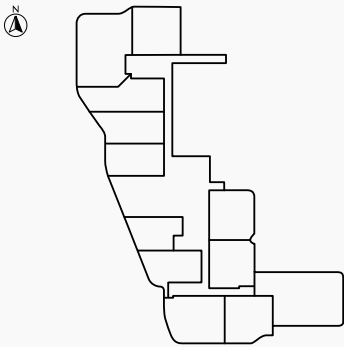
3 BEDROOMS
VILLA TYPE C

SEA & ISLAND VIEW

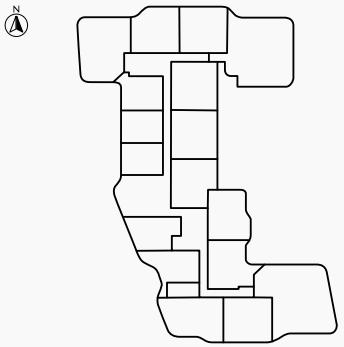
FLOOR
GROUND



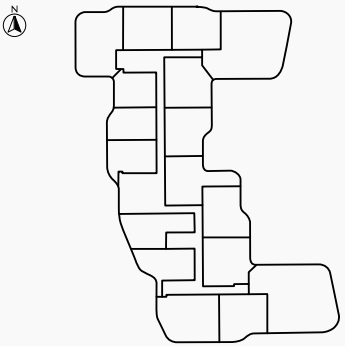
FLOOR
2



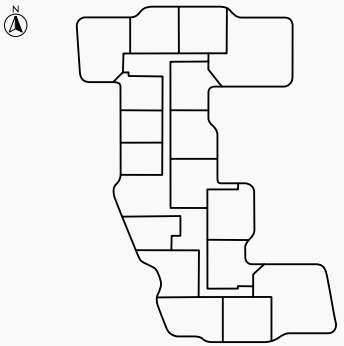
FLOOR
3



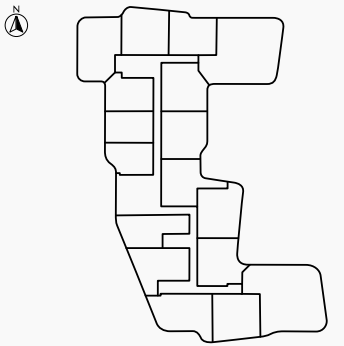
FLOORS
4, 8, 11, 13, 16



FLOORS
5, 7, 10, 12, 14



FLOORS
6, 9, 15



BEACH FRONT VIEW

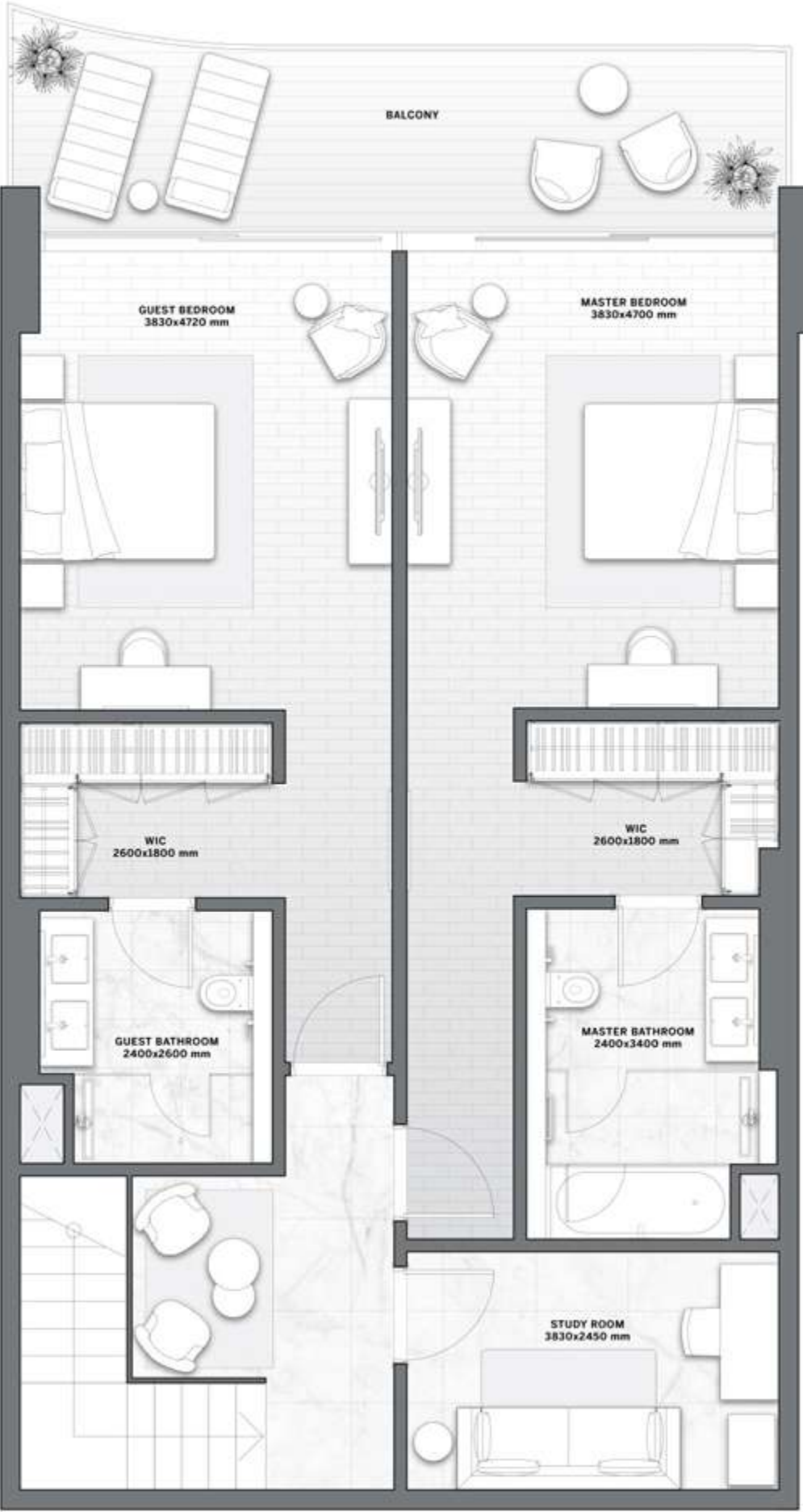
RESIDENCE	SQM	SQFT
Internal Area	211	2,269
Baclony Area	41	440
Total Built up Area	252	2,709

Disclaimer: All pictures, plans, layouts, information, data and details included in this brochure are indicative only and may change at any time up to the final 'as built' status in accordance with final designs of the project, regulatory approvals and planning permissions. All accessories and interior finishes such as wallpaper, chandeliers, furniture, electronics, white goods, curtains, hard and soft landscaping, pavements, features, gym, and other elements displayed in the brochure, or between the plot boundary, are not part of the unit and are shown for illustrative purposes only.

The Astera
INTERIORS BY ASTON MARTIN



LOWER LEVEL



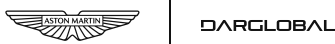
UPPER LEVEL

3 BEDROOMS

VILLA TYPE D

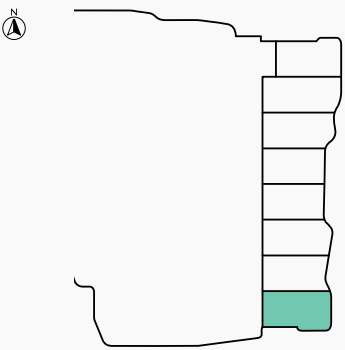
The Astera

INTERIORS BY ASTON MARTIN

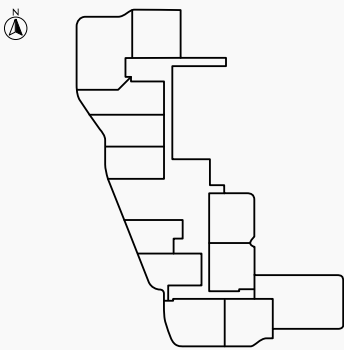


SEA & ISLAND VIEW

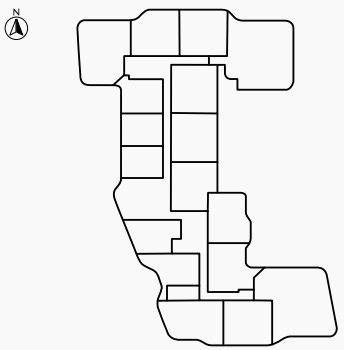
FLOOR
GROUND



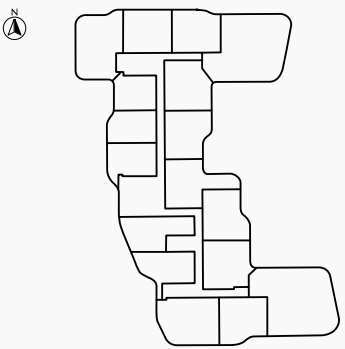
FLOOR
2



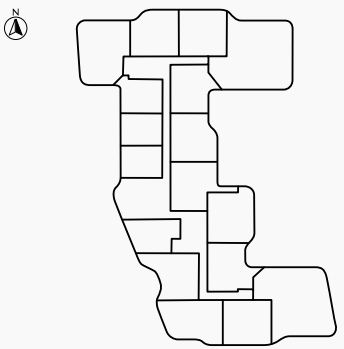
FLOOR
3



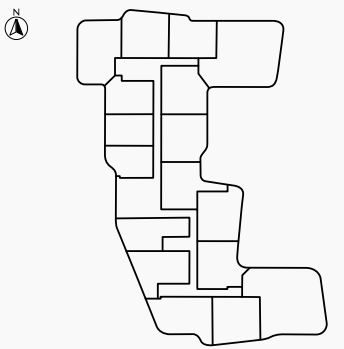
FLOORS
4, 8, 11, 13, 16



FLOORS
5, 7, 10, 12, 14



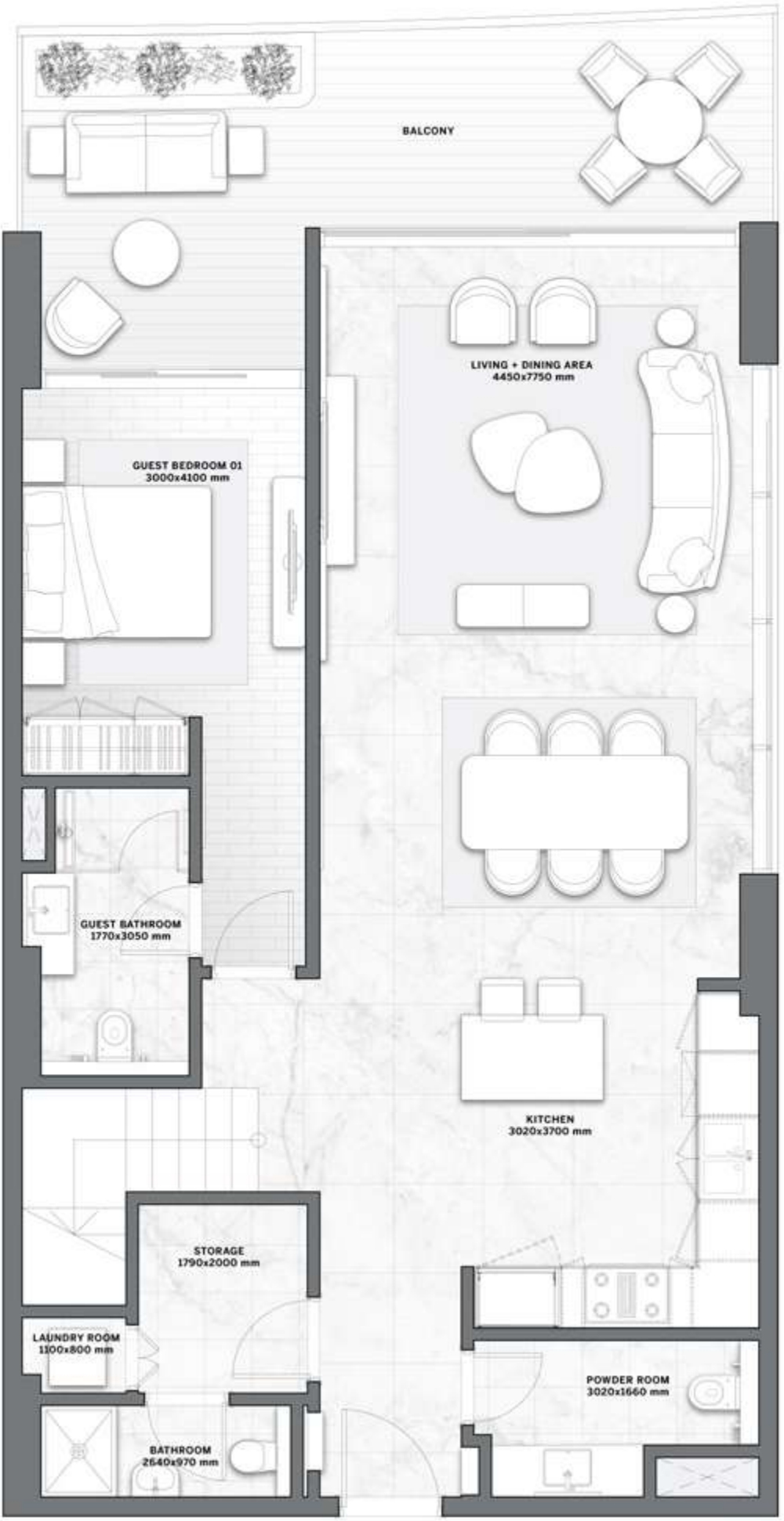
FLOORS
6, 9, 15



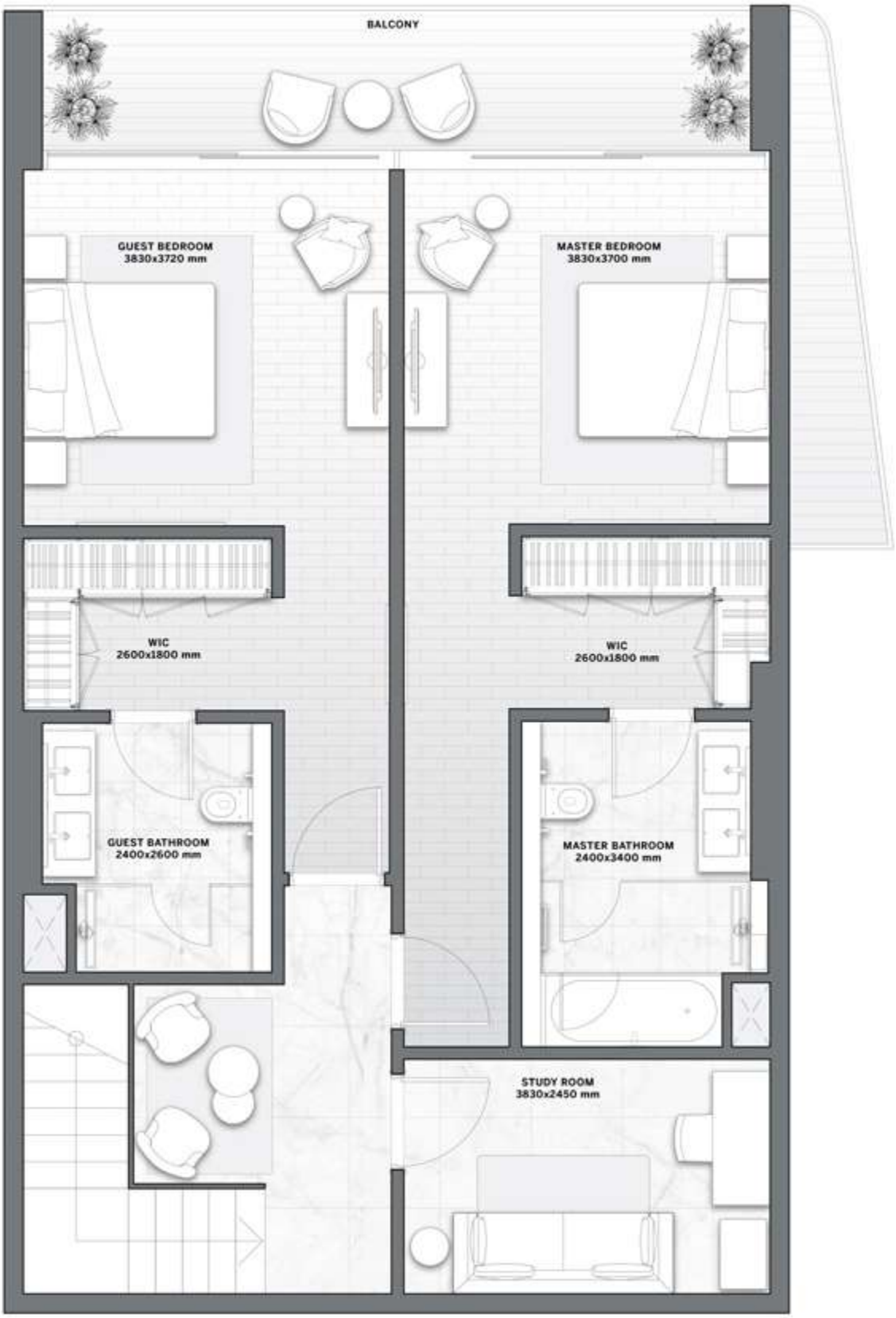
BEACH FRONT VIEW

RESIDENCE	SQM	SQFT
Internal Area	194	2,090
Baclony Area	34	364
Total Built up Area	228	2,455

Disclaimer: All pictures, plans, layouts, information, data and details included in this brochure are indicative only and may change at any time up to the final 'as built' status in accordance with final designs of the project, regulatory approvals and planning permissions. All accessories and interior finishes such as wallpaper, chandeliers, furniture, electronics, white goods, curtains, hard and soft landscaping, pavements, features, gym, and other elements displayed in the brochure, or between the plot boundary, are not part of the unit and are shown for illustrative purposes only.



LOWER LEVEL

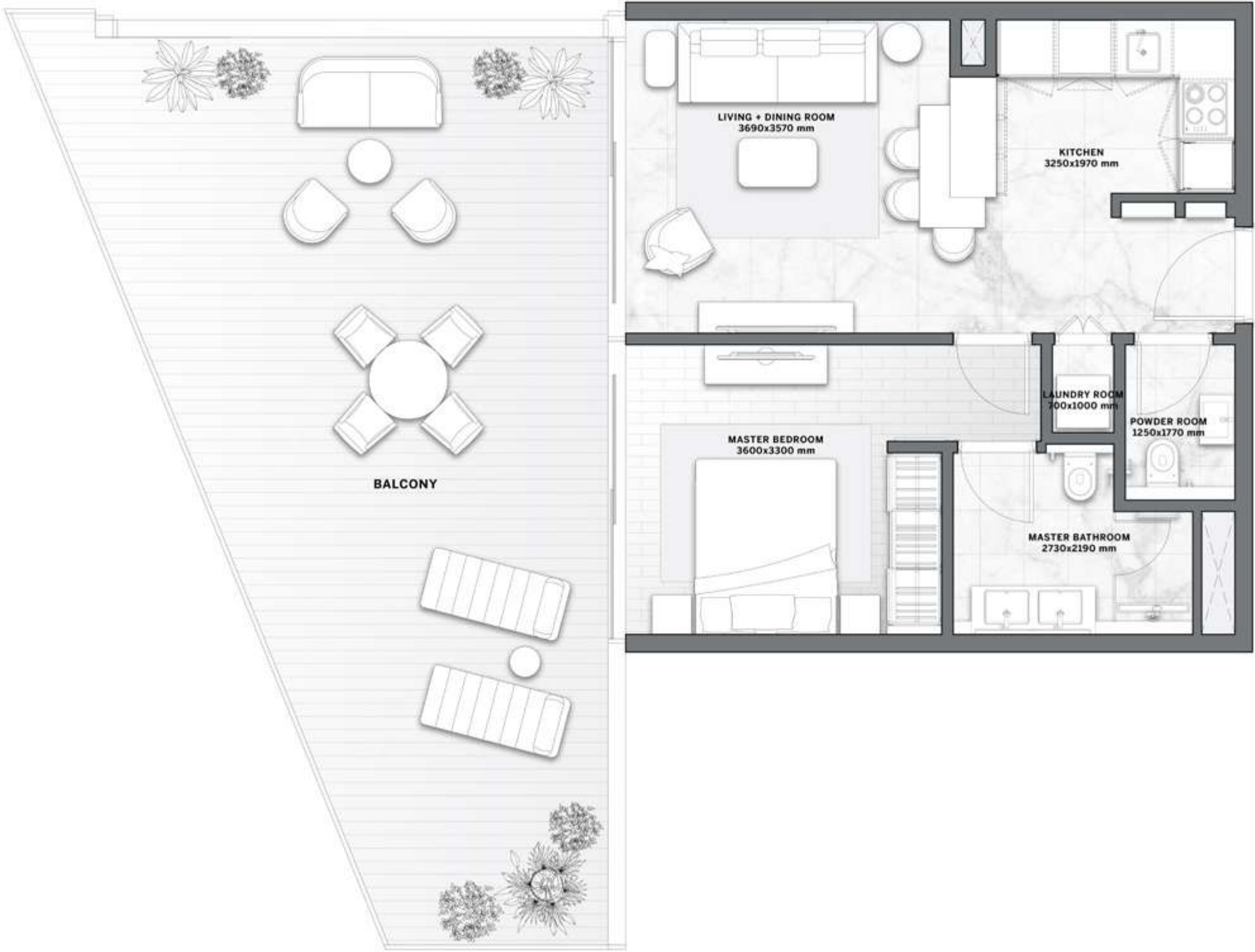
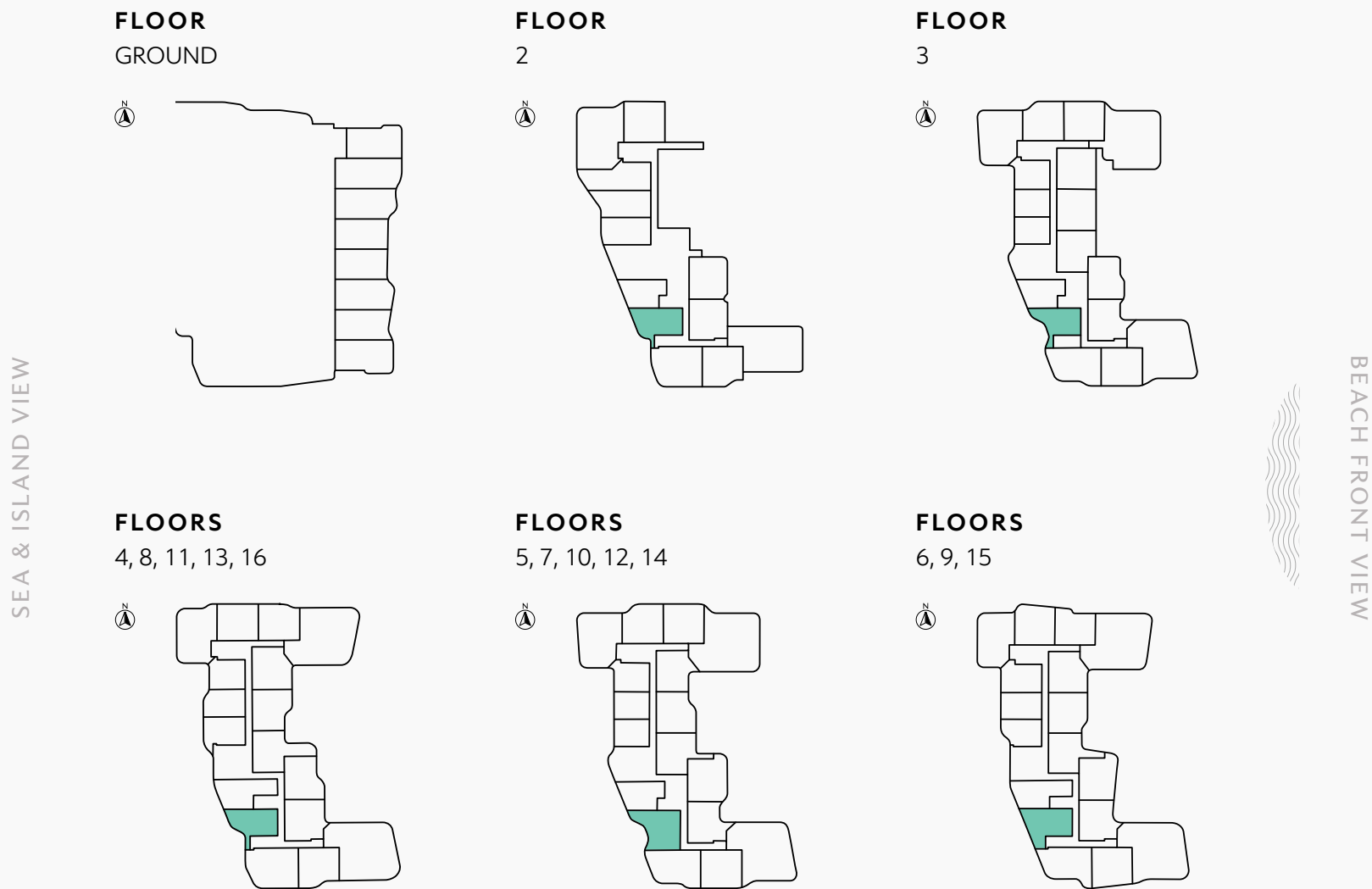
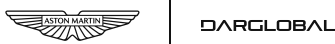


UPPER LEVEL

1 BEDROOM TYPE A

The Astera

INTERIORS BY ASTON MARTIN

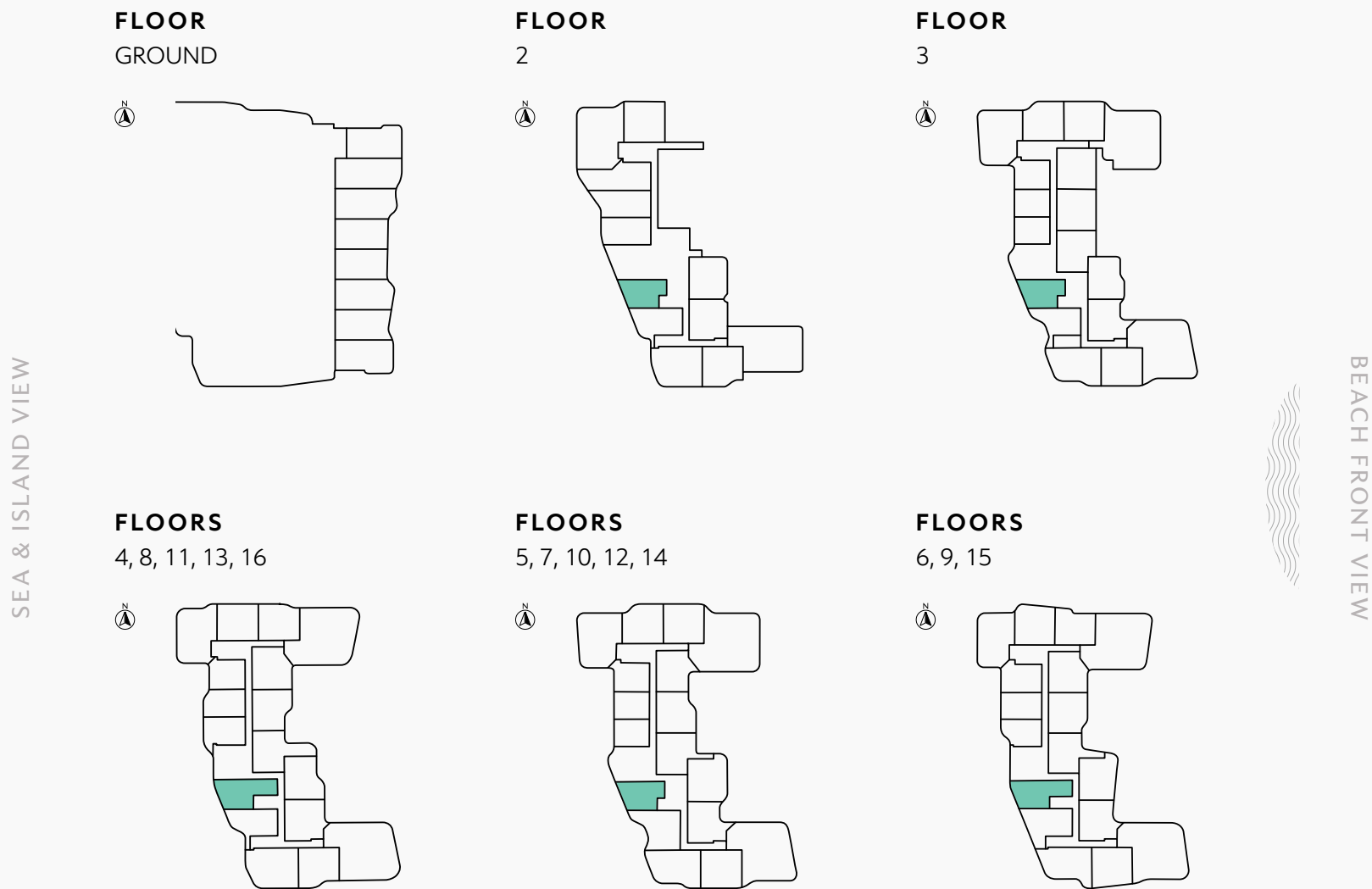
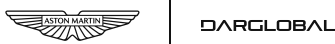


RESIDENCE	SQM	SQFT
Internal Area	48	522
Baclony Area	34 - 52	372 - 564
Total Built up Area	83 - 101	894 - 1,087

Disclaimer: All pictures, plans, layouts, information, data and details included in this brochure are indicative only and may change at any time up to the final 'as built' status in accordance with final designs of the project, regulatory approvals and planning permissions. All accessories and interior finishes such as wallpaper, chandeliers, furniture, electronics, white goods, curtains, hard and soft landscaping, pavements, features, gym, and other elements displayed in the brochure, or between the plot boundary, are not part of the unit and are shown for illustrative purposes only.

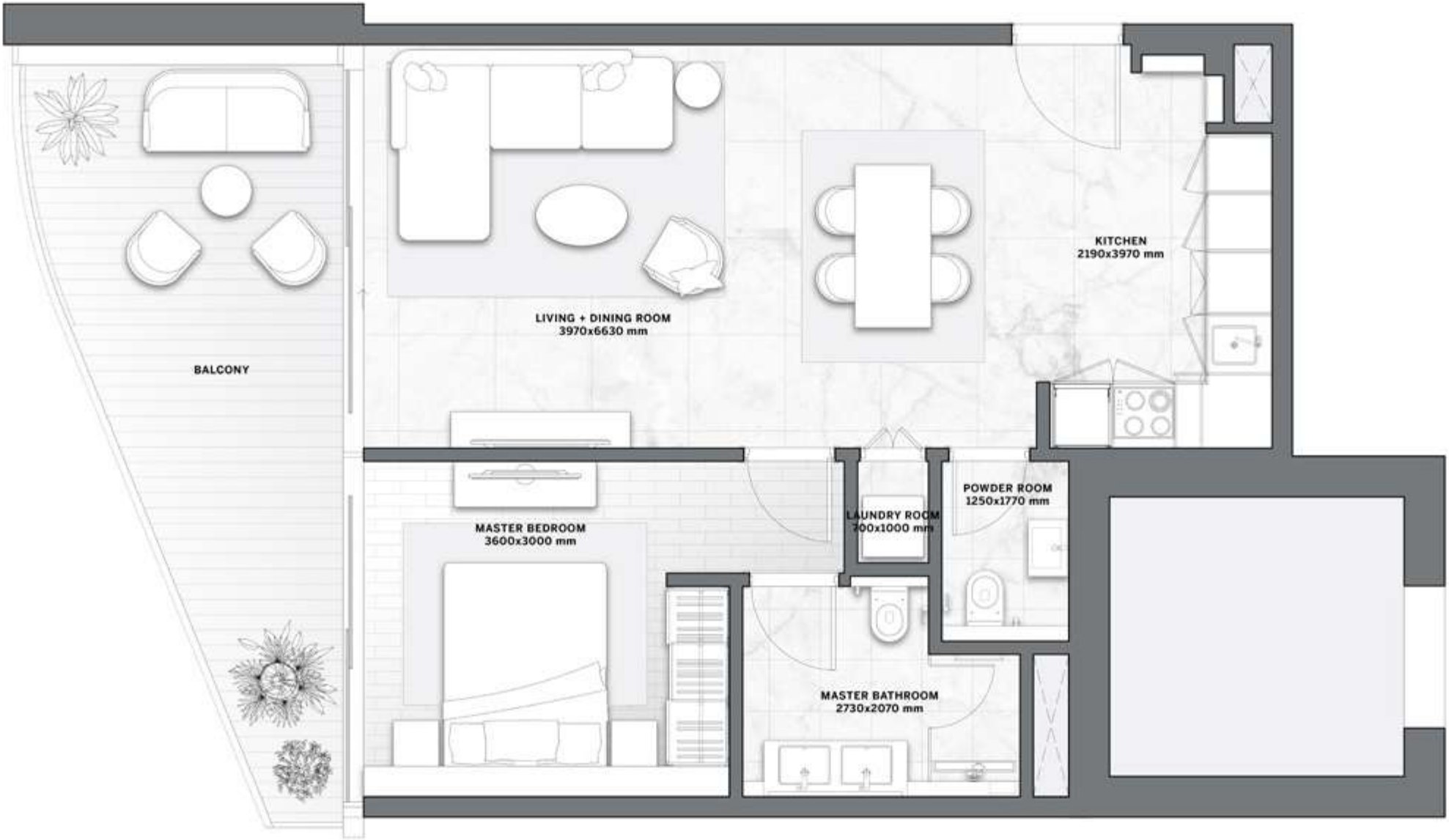
1 BEDROOM TYPE B

The Astera
INTERIORS BY ASTON MARTIN



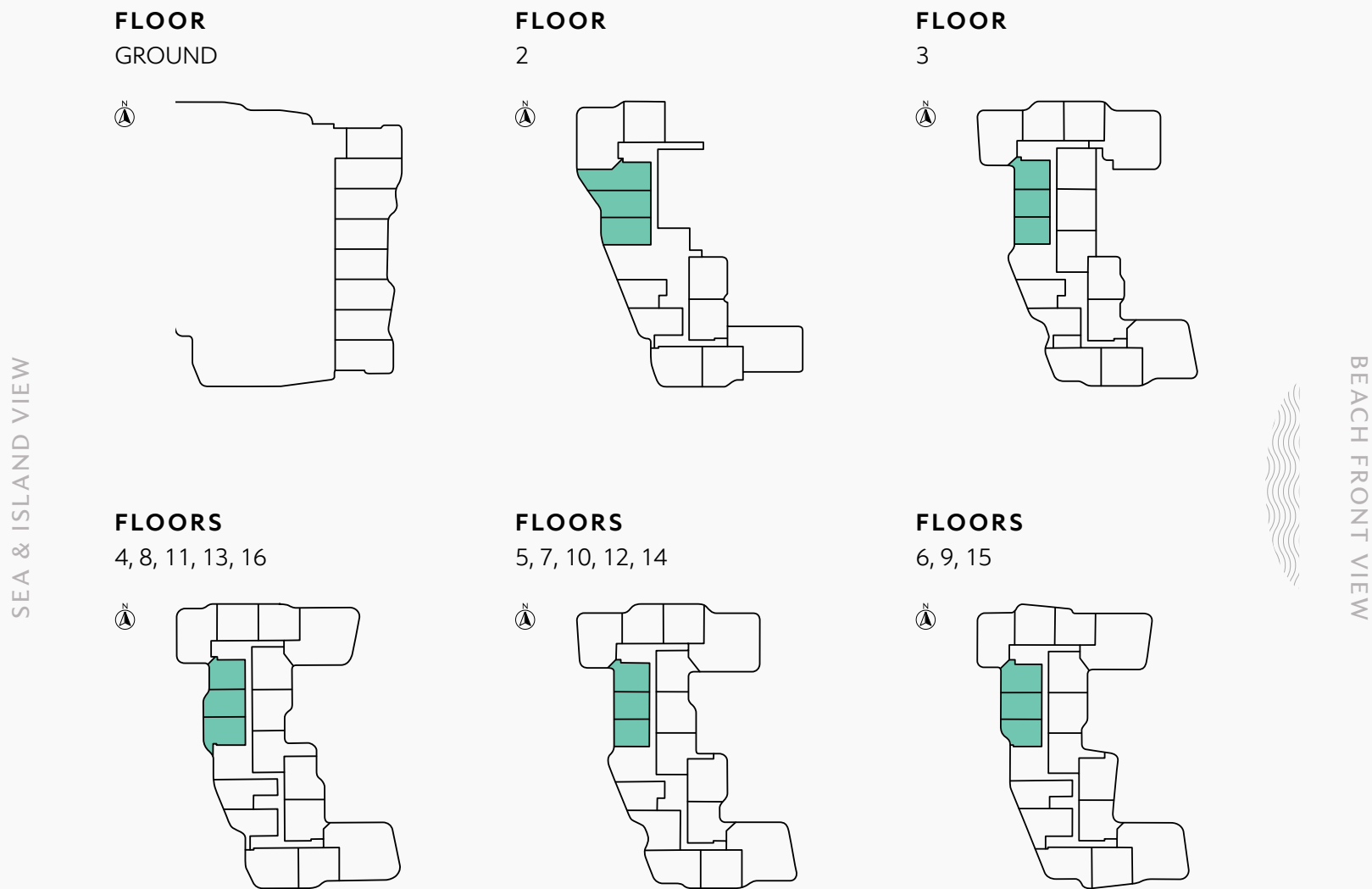
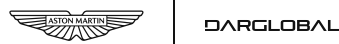
RESIDENCE	SQM	SQFT
Internal Area	58	623
Baclony Area	19 - 20	209 - 214
Total Built up Area	77 - 78	832 - 837

Disclaimer: All pictures, plans, layouts, information, data and details included in this brochure are indicative only and may change at any time up to the final 'as built' status in accordance with final designs of the project, regulatory approvals and planning permissions. All accessories and interior finishes such as wallpaper, chandeliers, furniture, electronics, white goods, curtains, hard and soft landscaping, pavements, features, gym, and other elements displayed in the brochure, or between the plot boundary, are not part of the unit and are shown for illustrative purposes only.



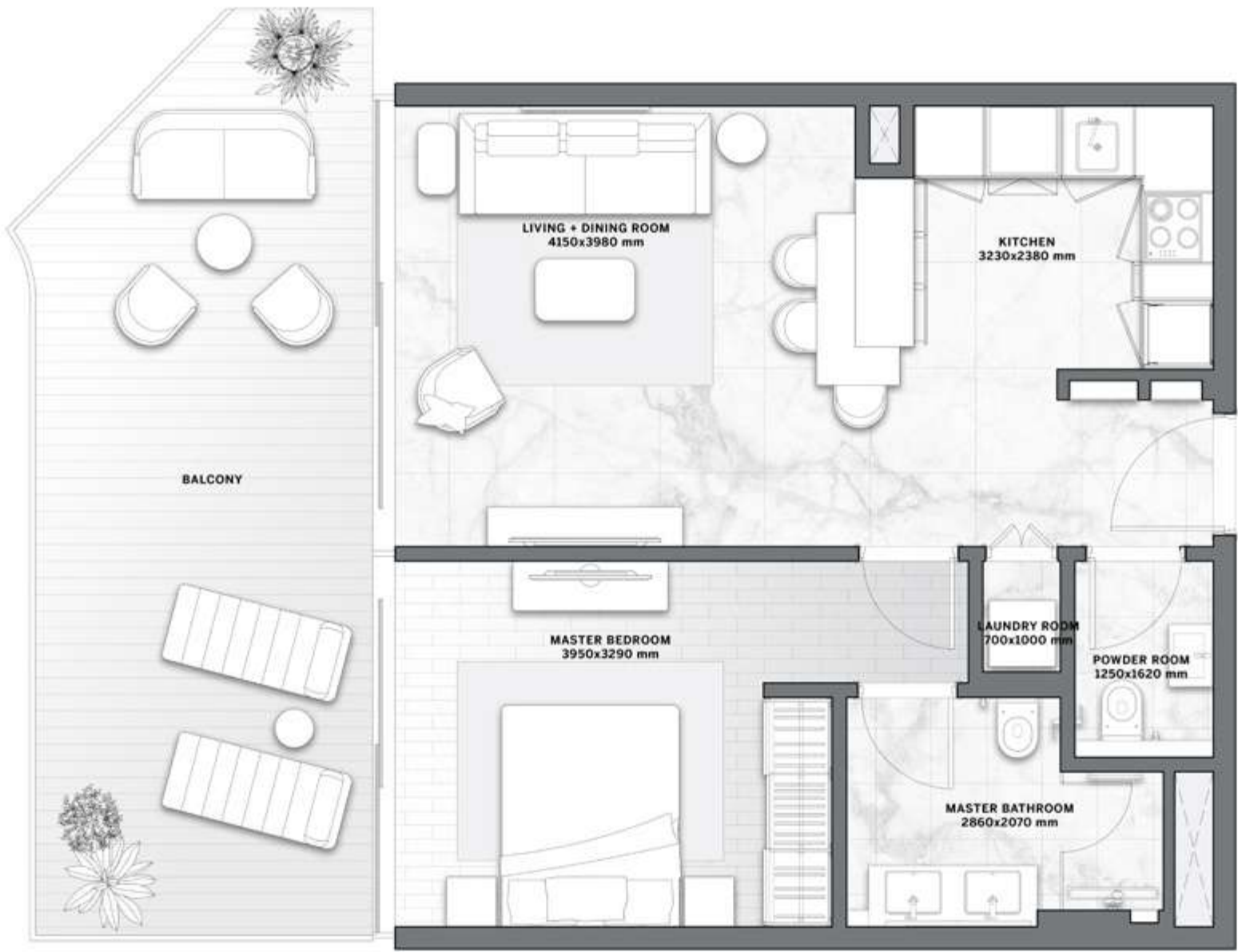
1 BEDROOM TYPE C

The Astera
INTERIORS BY ASTON MARTIN



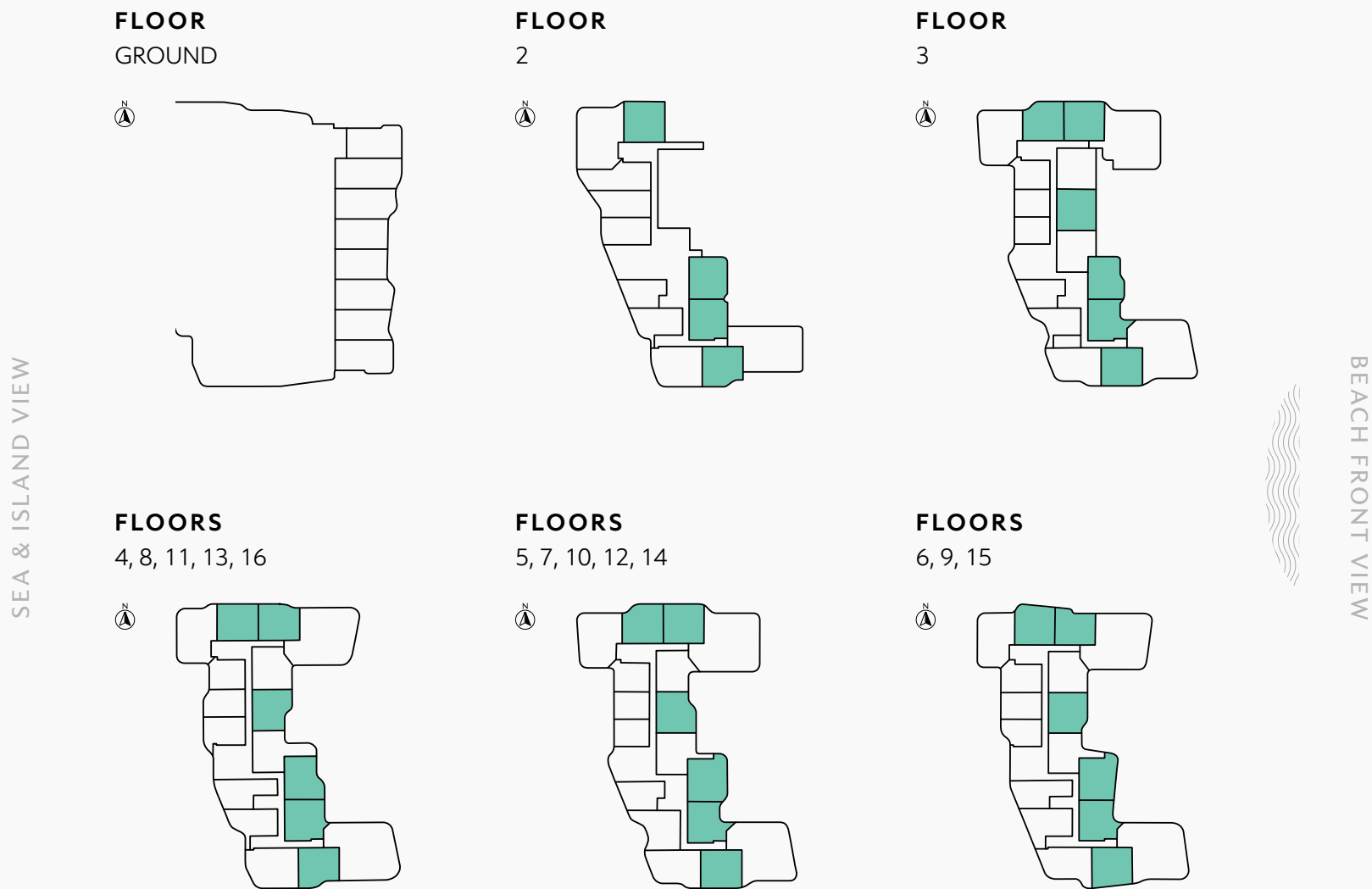
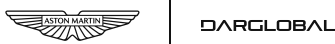
RESIDENCE	SQM	SQFT
Internal Area	52 - 55	562 - 595
Baclony Area	11 - 65	119 - 702
Total Built up Area	63 - 120	682 - 1,297

Disclaimer: All pictures, plans, layouts, information, data and details included in this brochure are indicative only and may change at any time up to the final 'as built' status in accordance with final designs of the project, regulatory approvals and planning permissions. All accessories and interior finishes such as wallpaper, chandeliers, furniture, electronics, white goods, curtains, hard and soft landscaping, pavements, features, gym, and other elements displayed in the brochure, or between the plot boundary, are not part of the unit and are shown for illustrative purposes only.

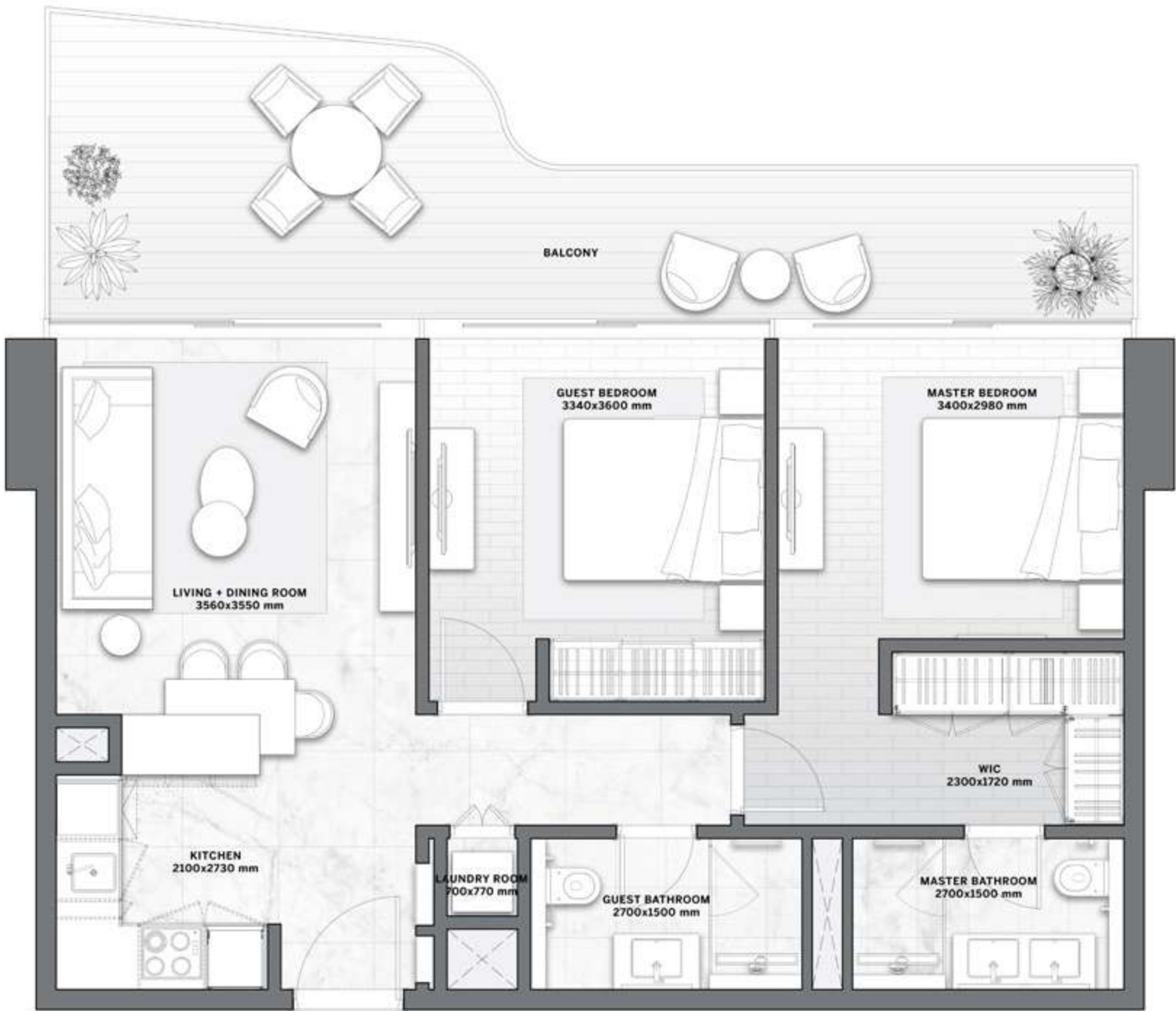


2 BEDROOMS
TYPE A

The Astera
INTERIORS BY ASTON MARTIN



RESIDENCE	SQM	SQFT
Internal Area	68 - 73	733 - 786
Baclony Area	23 - 43	252 - 467
Total Built up Area	93 - 116	1,002 - 1,252



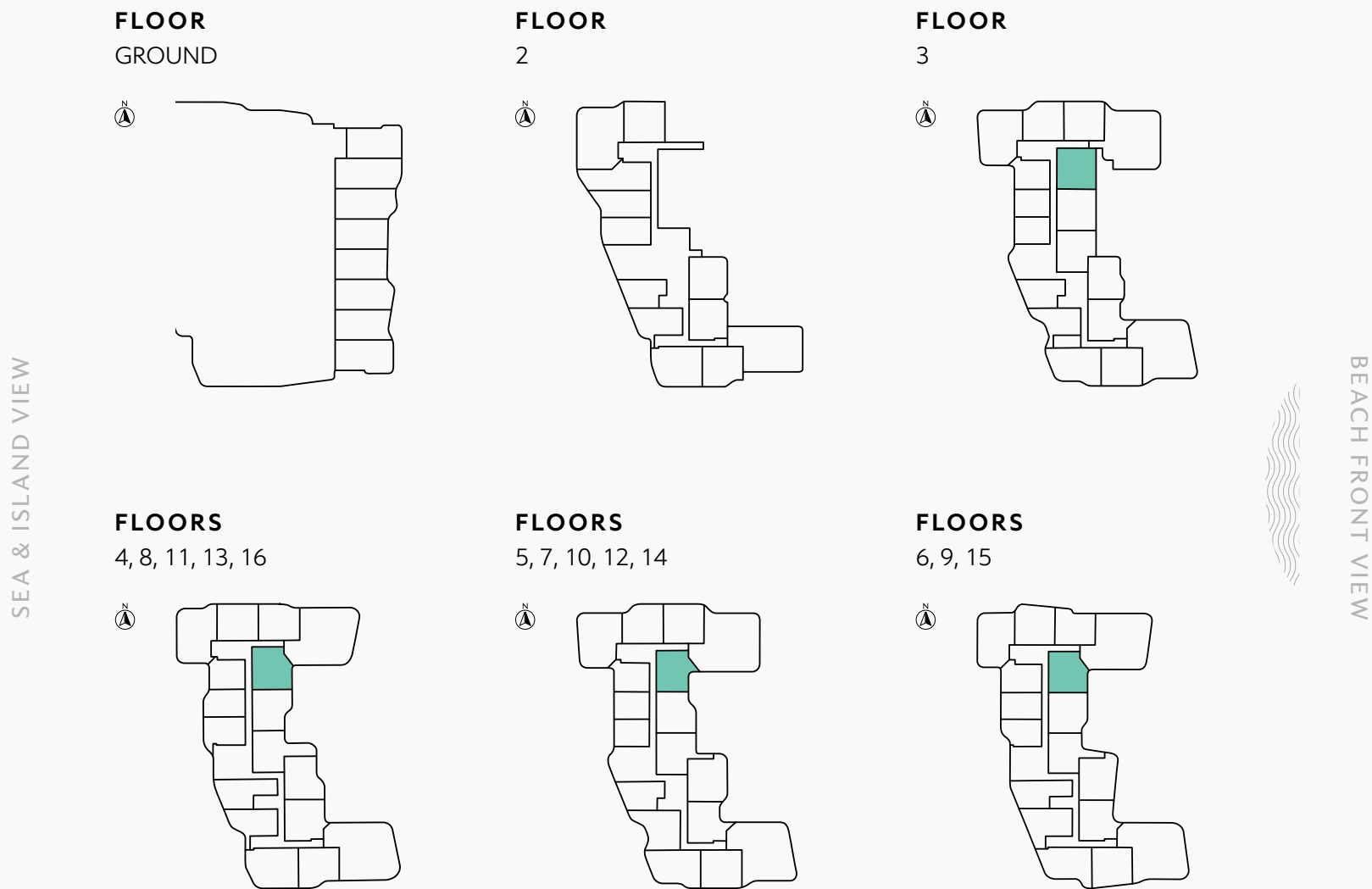
Disclaimer: All pictures, plans, layouts, information, data and details included in this brochure are indicative only and may change at any time up to the final 'as built' status in accordance with final designs of the project, regulatory approvals and planning permissions. All accessories and interior finishes such as wallpaper, chandeliers, furniture, electronics, white goods, curtains, hard and soft landscaping, pavements, features, gym, and other elements displayed in the brochure, or between the plot boundary, are not part of the unit and are shown for illustrative purposes only.

2 BEDROOMS

TYPE B

The Astera

INTERIORS BY ASTON MARTIN



RESIDENCE	SQM	SQFT
Internal Area	68	729
Baclony Area	23 - 34	252 - 369
Total Built up Area	91 - 102	981 - 1,098



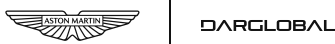
Disclaimer: All pictures, plans, layouts, information, data and details included in this brochure are indicative only and may change at any time up to the final 'as built' status in accordance with final designs of the project, regulatory approvals and planning permissions. All accessories and interior finishes such as wallpaper, chandeliers, furniture, electronics, white goods, curtains, hard and soft landscaping, pavements, features, gym, and other elements displayed in the brochure, or between the plot boundary, are not part of the unit and are shown for illustrative purposes only.

2 BEDROOMS

TYPE C

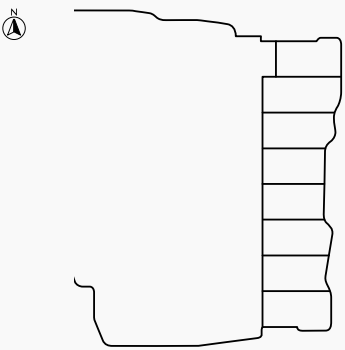
The Astera

INTERIORS BY ASTON MARTIN

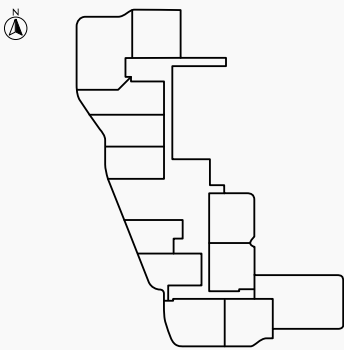


SEA & ISLAND VIEW

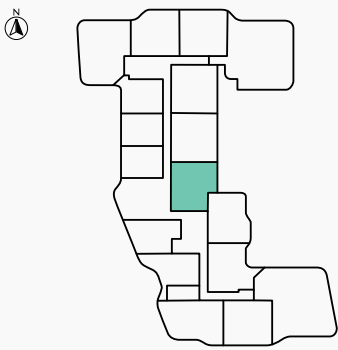
FLOOR
GROUND



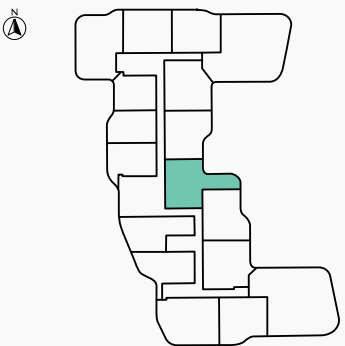
FLOOR
2



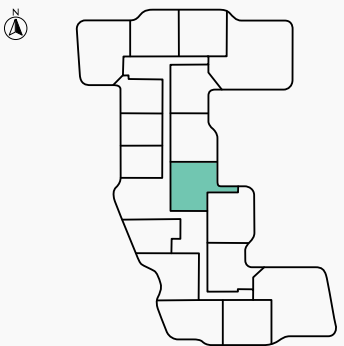
FLOOR
3



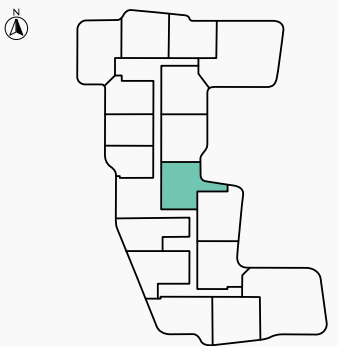
FLOORS
4, 8, 11, 13, 16



FLOORS
5, 7, 10, 12, 14



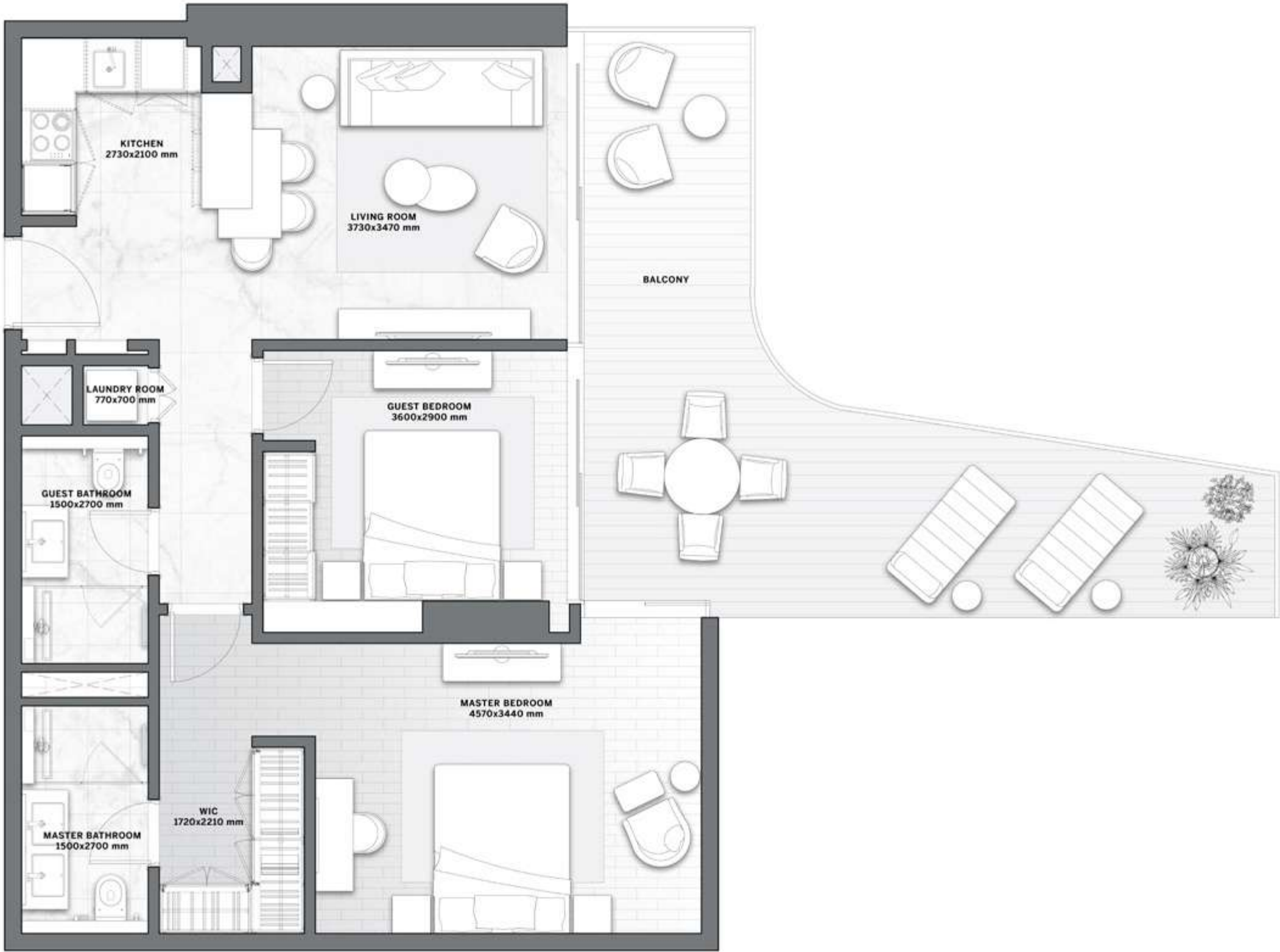
FLOORS
6, 9, 15



BEACH FRONT VIEW

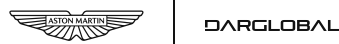
RESIDENCE	SQM	SQFT
Internal Area	68 - 75	736 - 810
Baclony Area	24 - 37	260 - 397
Total Built up Area	99 - 111	1,062 - 1,197

Disclaimer: All pictures, plans, layouts, information, data and details included in this brochure are indicative only and may change at any time up to the final 'as built' status in accordance with final designs of the project, regulatory approvals and planning permissions. All accessories and interior finishes such as wallpaper, chandeliers, furniture, electronics, white goods, curtains, hard and soft landscaping, pavements, features, gym, and other elements displayed in the brochure, or between the plot boundary, are not part of the unit and are shown for illustrative purposes only.



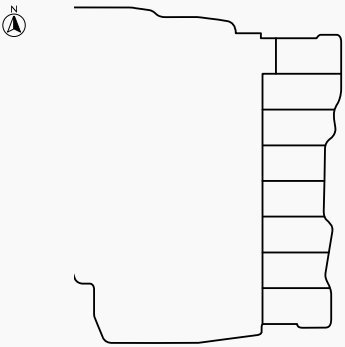
2 BEDROOMS
TYPE D

The Astera
INTERIORS BY ASTON MARTIN

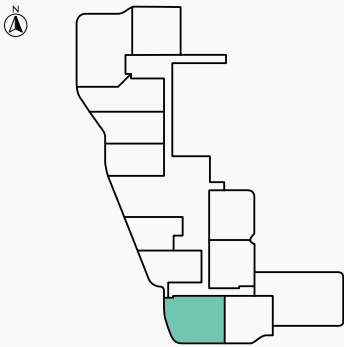


SEA & ISLAND VIEW

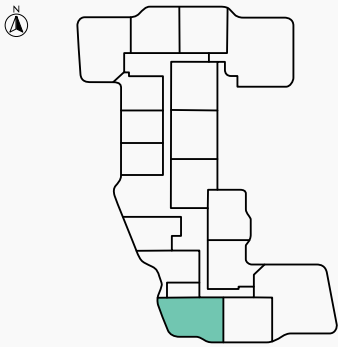
FLOOR
GROUND



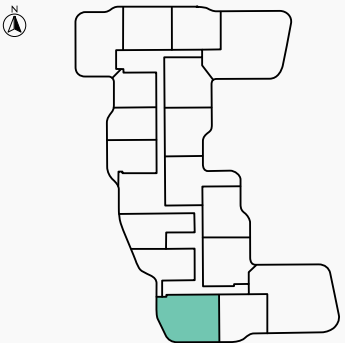
FLOOR
2



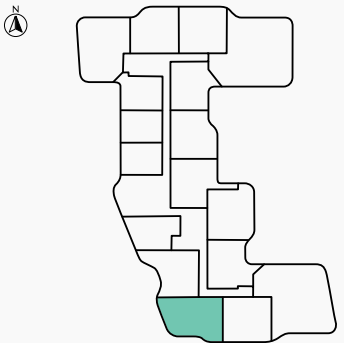
FLOOR
3



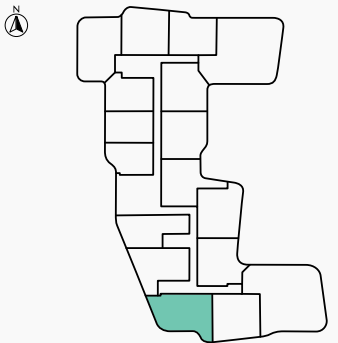
FLOORS
4, 8, 11, 13, 16



FLOORS
5, 7, 10, 12, 14



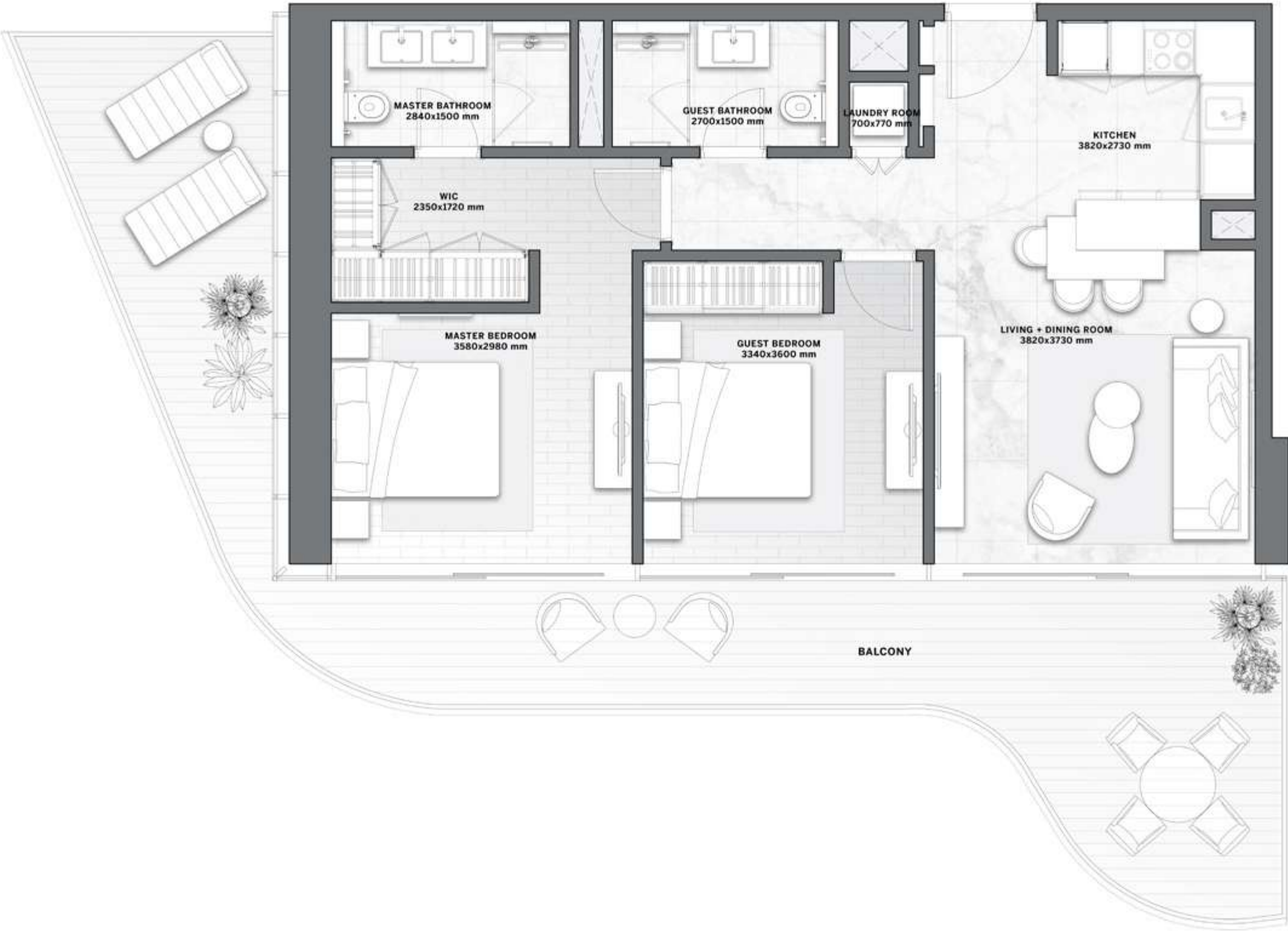
FLOORS
6, 9, 15



BEACH FRONT VIEW

RESIDENCE	SQM	SQFT
Internal Area	73	787
Baclony Area	42 - 56	459 - 607
Total Built up Area	116 - 129	1,246 - 1,394

Disclaimer: All pictures, plans, layouts, information, data and details included in this brochure are indicative only and may change at any time up to the final 'as built' status in accordance with final designs of the project, regulatory approvals and planning permissions. All accessories and interior finishes such as wallpaper, chandeliers, furniture, electronics, white goods, curtains, hard and soft landscaping, pavements, features, gym, and other elements displayed in the brochure, or between the plot boundary, are not part of the unit and are shown for illustrative purposes only.

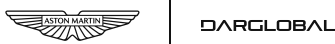


2 BEDROOMS

TYPE E

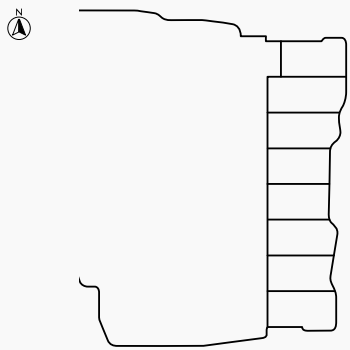
The Astera

INTERIORS BY ASTON MARTIN

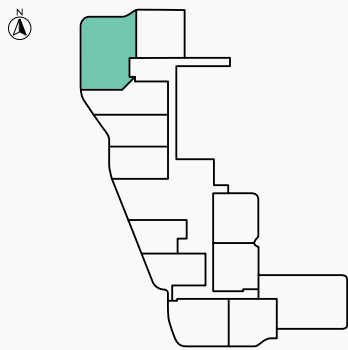


SEA & ISLAND VIEW

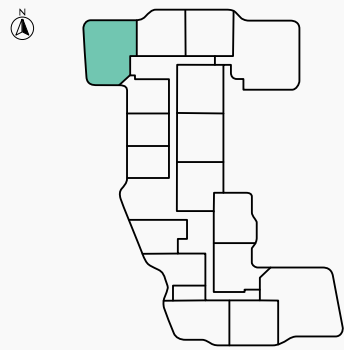
FLOOR
GROUND



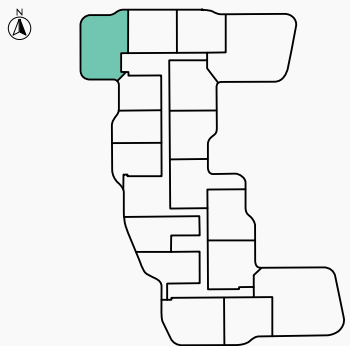
FLOOR
2



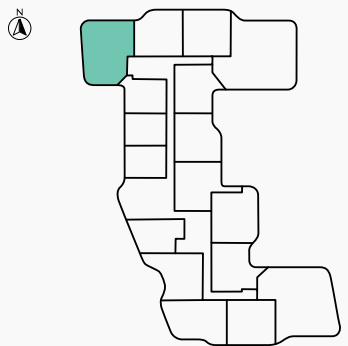
FLOOR
3



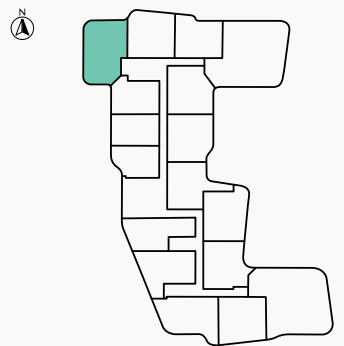
FLOORS
4, 8, 11, 13, 16



FLOORS
5, 7, 10, 12, 14



FLOORS
6, 9, 15



BEACH FRONT VIEW

RESIDENCE	SQM	SQFT
Internal Area	76	820
Baclony Area	50 - 61	539 - 659
Total Built up Area	126 - 182	1,359 - 1,479

Disclaimer: All pictures, plans, layouts, information, data and details included in this brochure are indicative only and may change at any time up to the final 'as built' status in accordance with final designs of the project, regulatory approvals and planning permissions. All accessories and interior finishes such as wallpaper, chandeliers, furniture, electronics, white goods, curtains, hard and soft landscaping, pavements, features, gym, and other elements displayed in the brochure, or between the plot boundary, are not part of the unit and are shown for illustrative purposes only.



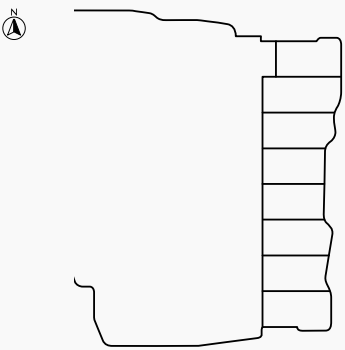
3 BEDROOMS
TYPE A

The Astera
INTERIORS BY ASTON MARTIN

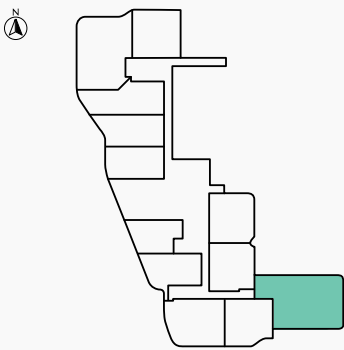


SEA & ISLAND VIEW

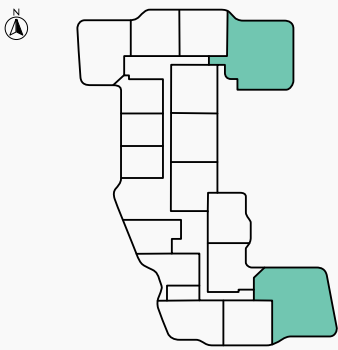
FLOOR
GROUND



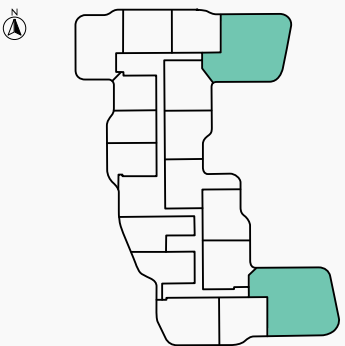
FLOOR
2



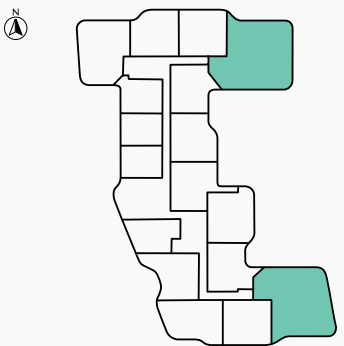
FLOOR
3



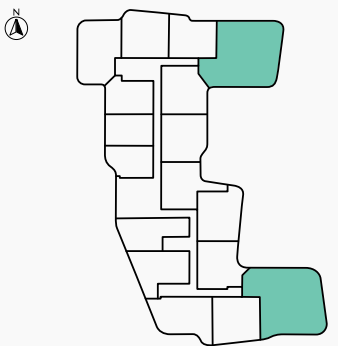
FLOORS
4, 8, 11, 13, 16



FLOORS
5, 7, 10, 12, 14



FLOORS
6, 9, 15



BEACH FRONT VIEW

RESIDENCE	SQM	SQFT
Internal Area	136-140	1,466 - 1,508
Baclony Area	89 - 117	961 - 1,264
Total Built up Area	227 - 254	2,443 - 2,730

Disclaimer: All pictures, plans, layouts, information, data and details included in this brochure are indicative only and may change at any time up to the final 'as built' status in accordance with final designs of the project, regulatory approvals and planning permissions. All accessories and interior finishes such as wallpaper, chandeliers, furniture, electronics, white goods, curtains, hard and soft landscaping, pavements, features, gym, and other elements displayed in the brochure, or between the plot boundary, are not part of the unit and are shown for illustrative purposes only.



DAR GLOBAL PLC

DARGLOBAL

LISTED ON THE
LONDON STOCK EXCHANGE

Established in 2017 to upend the global luxury real estate market, DarGlobal combines experience and innovation to deliver the highest quality properties. World-class architects curate DarGlobal’s homes that are modelled by renowned design icons; each DarGlobal home is build with the highest quality materials and maintained by experts within the field.

DarGlobal believes there is no better investment than an investment in luxury and takes pride in choosing the best-in-class locations and properties to provide lucrative investment opportunities for a distinct clientele.

BUILDING ON THE LEGACY OF
THE LARGEST REAL ESTATE
COMPANY IN THE REGION

09

offices in different
cities worldwide

30

years of
experience

15,000+

residential units
delivered

8.9Bn*

USD in
assets

500,000sqm

of commercial space

*Combined assets of DarGlobal & Dar Al Arkan as of March 31, 2024

OUR OFFICES

DARGLOBAL

DUBAI, UAE

Jumeirah Emirates Towers
30th Floor, Sheikh Zayed Road,
PO Box 2523, Dubai,
United Arab Emirates
T +971 4 247 8999

MARBELLA, SPAIN

Marbella Club Golden Mile,
Av. Bulevar Principe Alfonso
de Hohenlohe, Marbella 29602
Málaga, Spain
T +34 952 68 76 80

LONDON, UK

50 Hans Crescent,
Knightsbridge, London,
SW1X 0NA,
United Kingdom
T +44 7875 495156

DOHA, QATAR

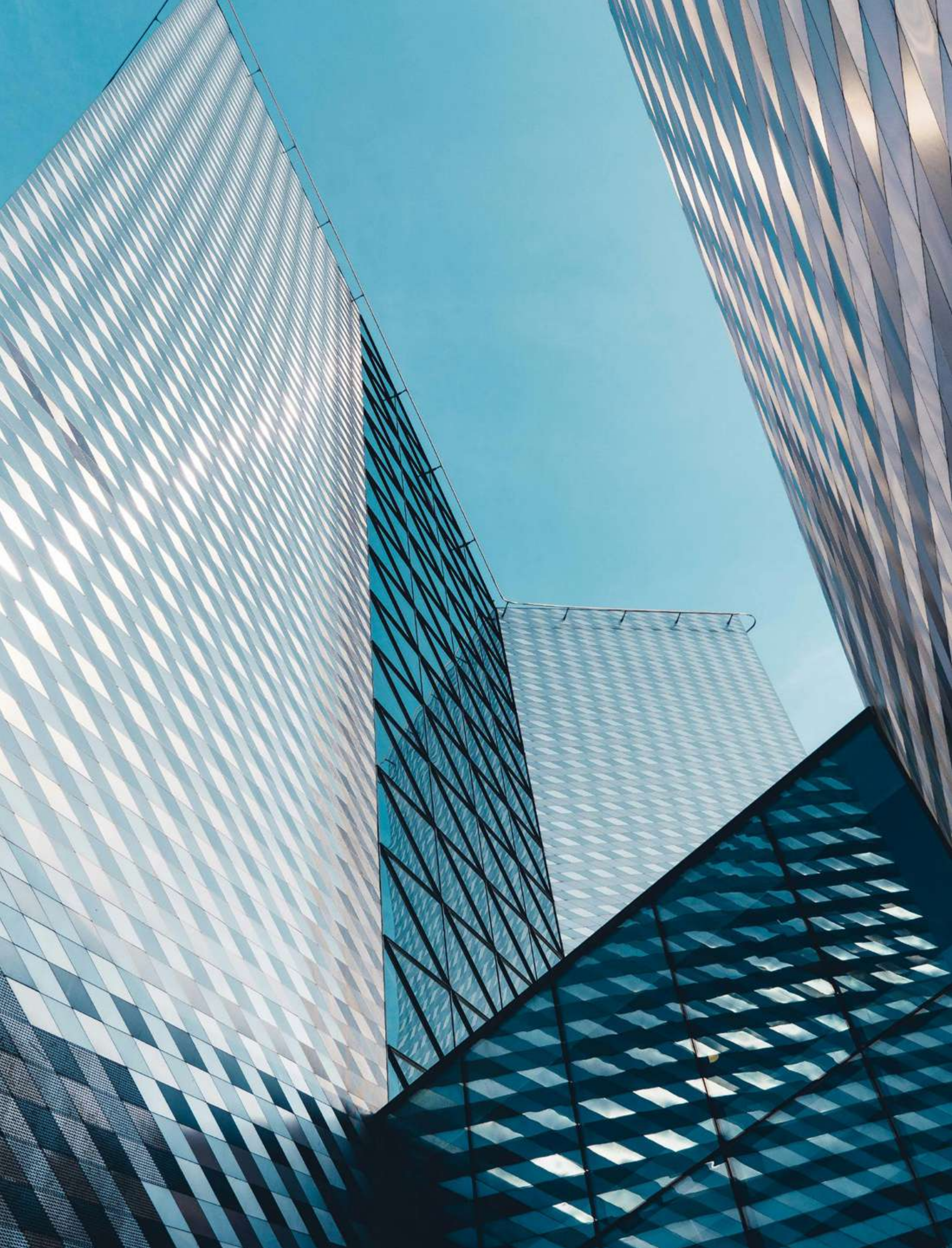
Malibu Building,
Lusail Entertainment City,
Doha, Qatar
T +974 800 3536

MUSCAT, OMAN

Royal Opera House Muscat
Shatti Al Qurum,
Oman, Muscat
T +968 2270 2777

For more information on The Astera, Interiors by Aston Martin
please call +971 4562 9616 (UAE)

You can visit our website at darglobal.co.uk
or via our social media platforms



DARGLOBAL

Joint Development Partner



ABOUT AARVEES

Aarvees, established in 1994, has been a pioneer in transforming Dubai’s skyline. Specializing in real estate development, entertainment, logistics, and hospitality, Aarvees is committed to delivering world-class projects that enhance the quality of life and foster sustainable growth. The company integrates innovative solutions and maintains the highest standards of integrity and customer satisfaction. Through strategic partnerships and a visionary approach, Aarvees continuously shapes the future of the UAE, reflecting its dedication to excellence and community development.



DARGLOBAL

Joint Development Partner



ARVEES

DARGLOBAL.CO.UK