



**GEMINI PROPERTY DEVELOPERS**

[www.geminipropertydevelopers.com](http://www.geminipropertydevelopers.com)



GEMINI  
BUILDING TRUST

Proudly presents

*Symphony*  
BUSINESS BAY





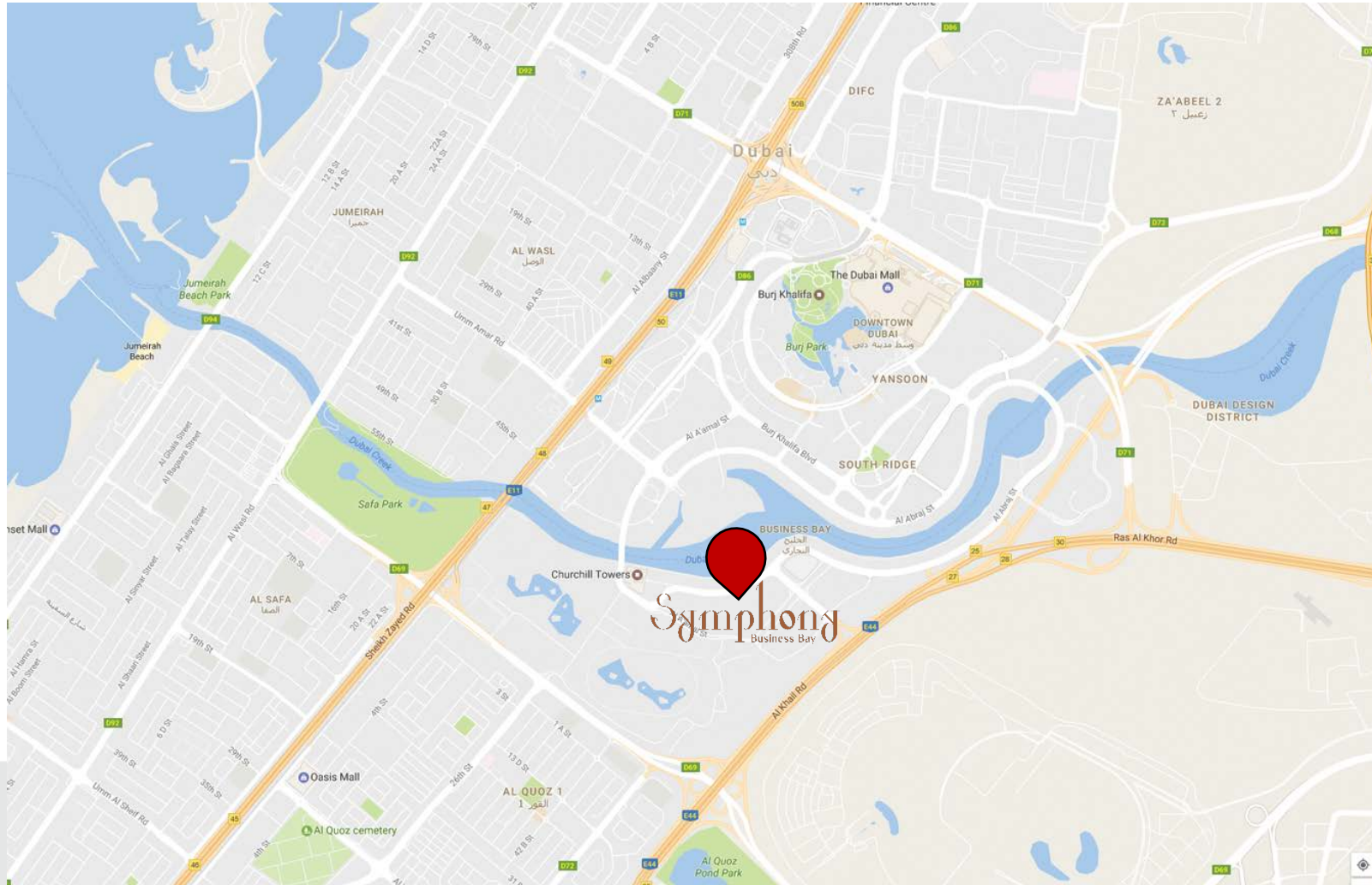
A regal G+29 residential tower offering studios, 1, 2 and 3 bed apartments that is located right in the heart of Business Bay – one of Dubai's focal business districts that adjoins Downtown Dubai.

Residents of Symphony will have stunning views of the Burj Khalifa and the Marasi Promenade along Dubai water canal and access to a plethora of entertainment and leisure options. Convenience is at the center of everything at Symphony – everything from location, to efficient layouts.

Symphony is also flanked by two large parks making life ideal for families and children's.



Close to the major landmarks of downtown





# Direct view of Burj Khalifa & Marasi Promenade Business Bay along Dubai water canal

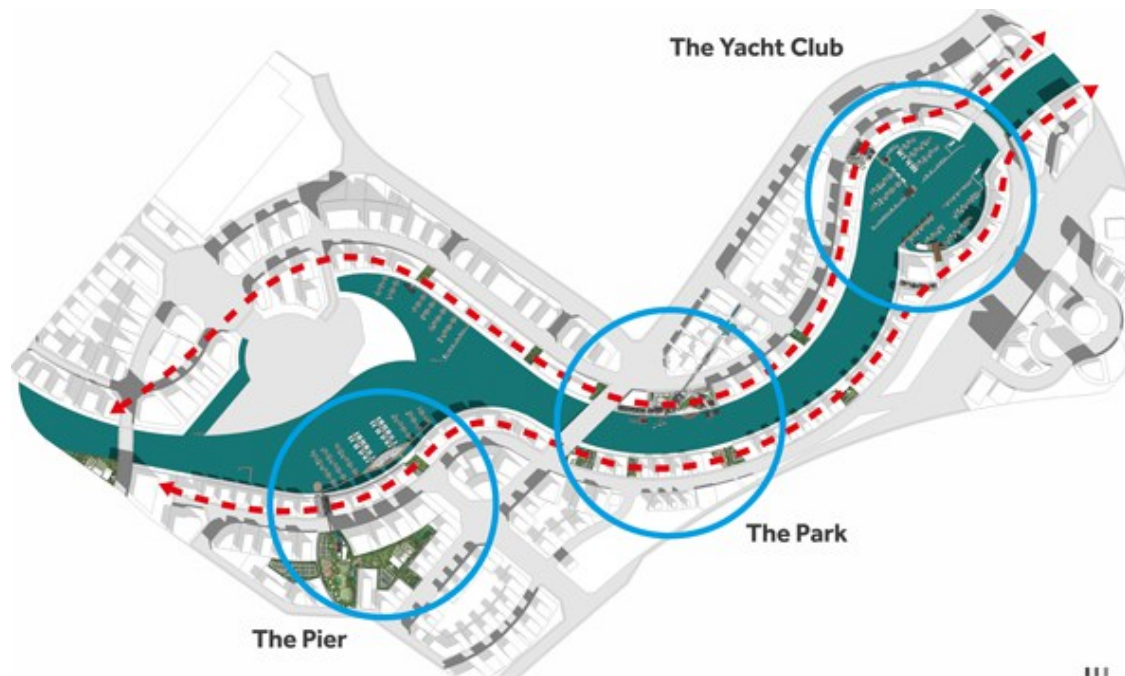




## Key Features of Location

- Located at the heart of Business Bay, one of Dubai's main business districts, is a 64million square foot development which integrates a range of residential spaces, international and local businesses, Financial institutions and retail and hospitality options.
- Proximity to 100s of Business establishments.
- Short distance from Burj Khalifa and nearby Downtown Dubai.
- Green parks on 2 sides of the Building -- entertainment , children & elders alike.
- Ample inbuilt parking's & neighbouring many retails of F & B, Department stores, & domestic needs.
- Close to Marasi Canal Promenade, Business Bay.
- Business Bay is easily accessible from to highway links from Al Khail Road, Financial Centre Road and Sheikh Zayed Road.

## Location Advantage



- The area is regularly serviced by bus links and frequent RTA services run from outside the building.
- Easy access to Business Bay and Dubai Mall metro.
- 12-kilometres-long and from 6-metres to 15-metres wide, the promenade will be the largest in the UAE.
- The new development will also be home to three RTA Marina stations, meaning those living in Business Bay will have another public transport option.

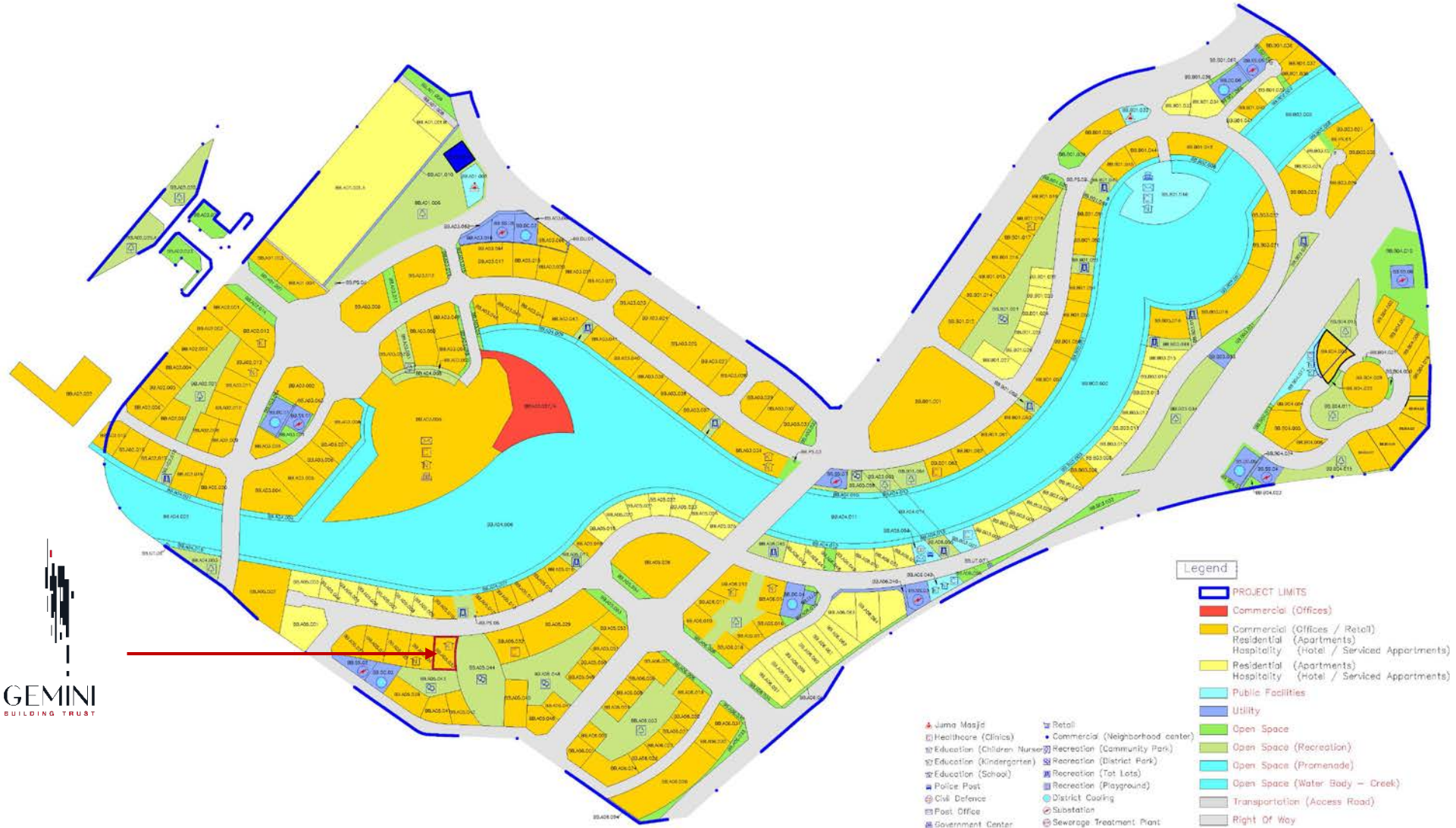


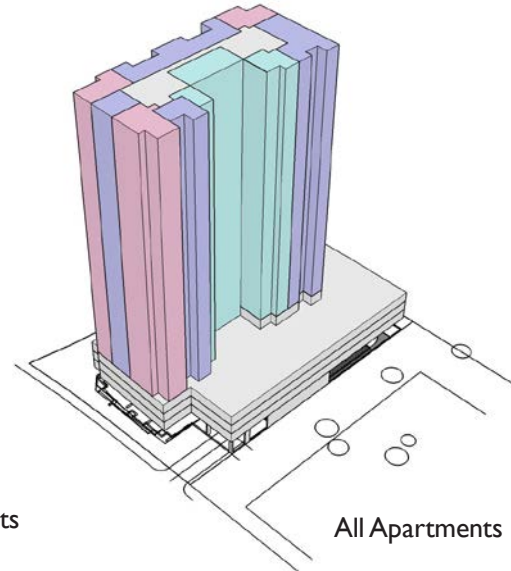
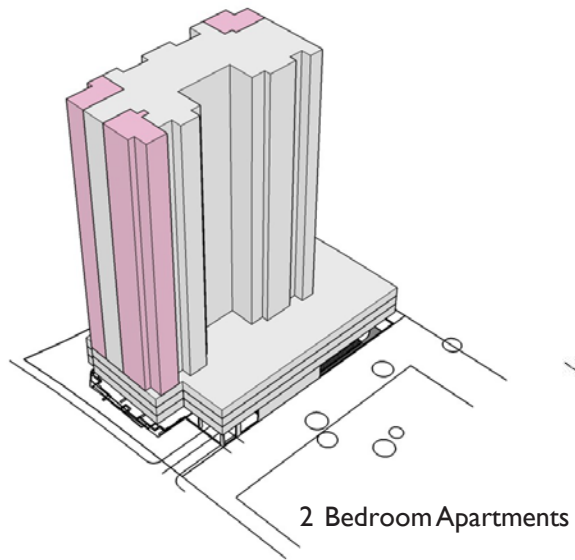
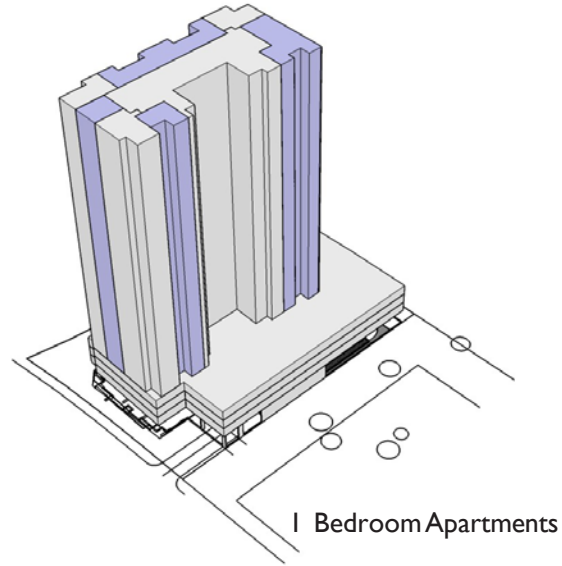
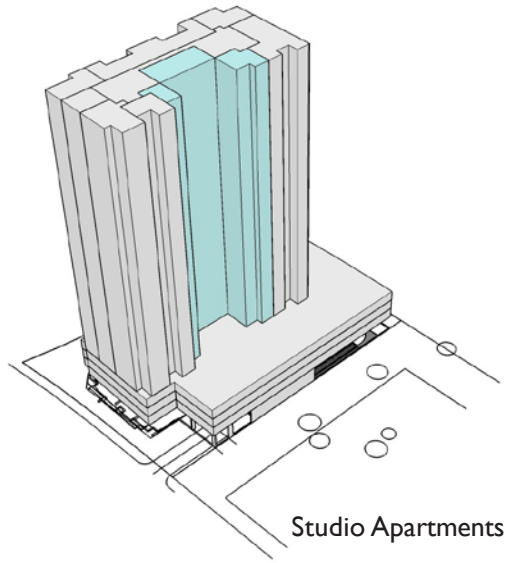
## Actual View From the Site





# Master Plan – Business Bay





## NO. OF UNITS / CONFIGURATION

| CONFIGURATION | TYPE      | SIZE (Sq ft) | Nos. | Nos. |
|---------------|-----------|--------------|------|------|
| STUDIO        | A         | 430          | 119  | 166  |
|               | B         | 524          | 47   |      |
| 1 BED         | A         | 755          | 143  | 214  |
|               | B         | 817          | 48   |      |
|               | C         | 880          | 23   |      |
| 2 BED         | A         | 1090         | 48   | 72   |
|               | B         | 1236         | 24   |      |
| 3 B DUPLEX    | PENTHOUSE | 2200         | 5    | 5    |
| TOTAL         |           |              |      | 457  |



## Project details

- Project Type - Residential
- Number of Floors - 2B+G+3P+26
- Plot Area - 60,326 sq. ft.
- Built up Area - 708,000 sq. ft.
- Apartment Types - Studio, 1 Bedroom, 2 Bedroom & 3 Bedroom

## Amenities

The comfort of your home is just the tip of the ensemble that ties the symphony together. Symphony offers its residents a host of top-of-the-line amenities that completes the living experience.

- Gym
- Yoga Lawn
- Swimming Pool
- Rooftop BBQ
- Jogging Track
- Kid's Play Area
- Retail Stores
- Green Open Spaces
- Smart Homes
- Concierge



## Best Investment Opportunity

- Ideal Location
- Excellent Design
- Luxuriously Affordable
- Assured & Timely Completion
- Highest Rental Returns
- Best Value Investment

