

BARAJEEL TOWERS

www.barajeeltowers.ae



جي جا العقارية
PROPERTIES



BARAJEEL

TOWERS

ABOUT AJMAN

Ajman, the smallest yet most diverse of all emirates, strategically lies in the heart of UAE. It borders Sharjah and is approximately only 25 minutes to Ras Al Khaimah. Hence, it provides easy commute to Dubai and other emirates.

ABOUT BARAJEEL TOWERS

Discover a unique residential experience at Barajeel Towers. Located in Ajman's vibrant downtown, these contemporary apartments boast stunning views of the city skyline and the serene Ajman Creek. With exquisite finishes and a prime location, Barajeel Towers offers a bespoke lifestyle for discerning residents.

AMENITIES

- Fully equipped gym:

Modern equipment and multiple workout areas

- Security:

24-hour security staff on site

- Nearby Amenities

Shopping: Markets and shopping centers within reach

- Education:

Nearby schools and universities

- Recreation:

Parks, recreation centers, and restaurants nearby



CONNECTIVITY



20 min

to Sharjah
International Airport

إلى مطار
الشارقة الدولي



30 min

to Dubai
International Airport

إلى مطار
دبي الدولي



5 min

to Ajman
Free Zone

إلى المنطقة
الحرّة في عجمان



15 min

to Ajman
University

إلى جامعة
عجمان



10 min

to Ajman
City Centre

إلى سيتي
سنتر عجمان



10 min

to Ajman
Corniche

إلى كورنيش
عجمان



8 min

to Ajman
Museum

إلى متحف
عجمان



15 min

to Ajman
Mangroves

إلى منغروف
عجمان

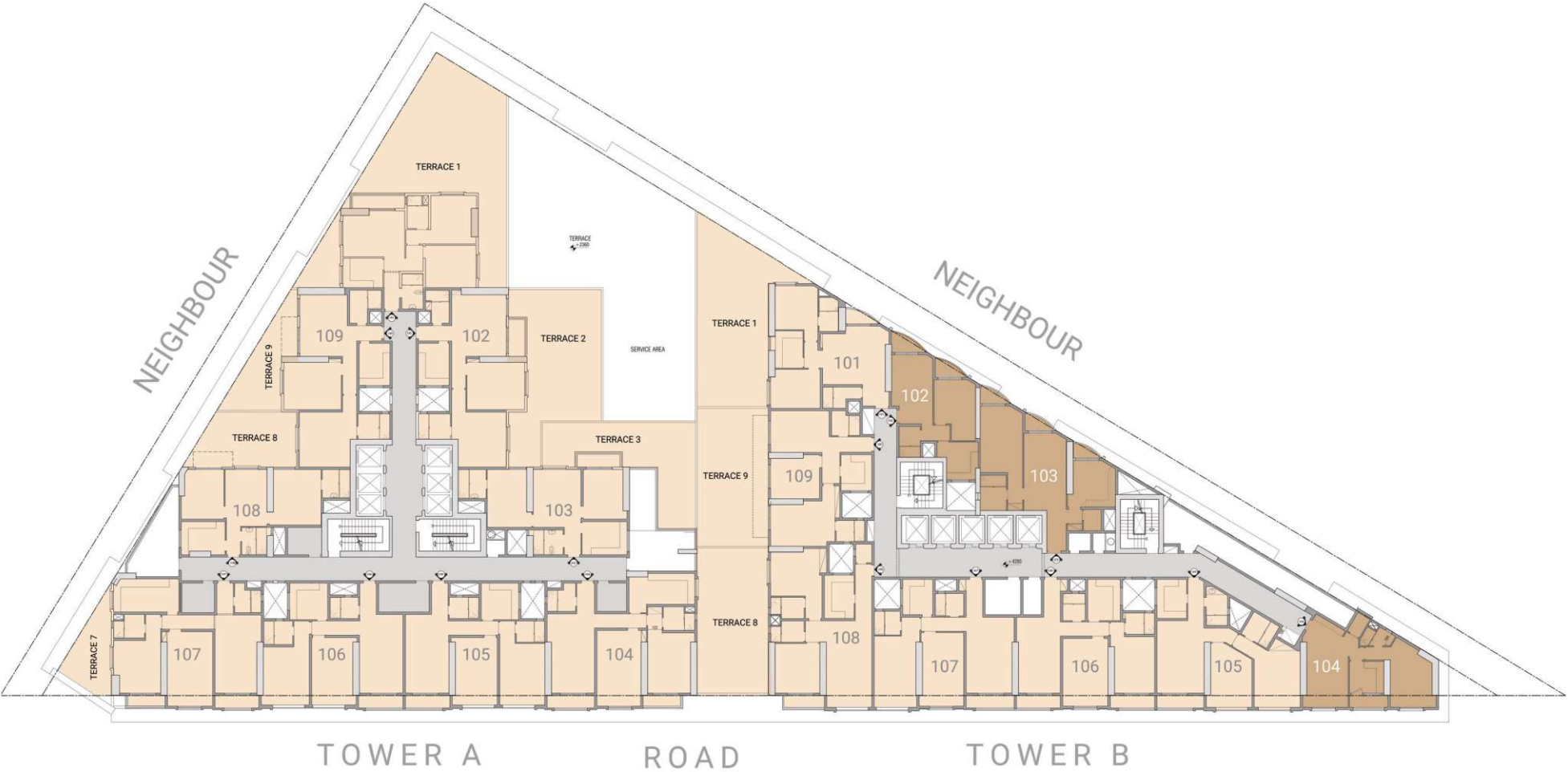
FIRST FLOOR PLAN
TOWER A&B

BARAJEEL TOWERS

FIRST FLOOR PLAN
TOWER A&B

ONE BEDROOM

TWO BEDROOM

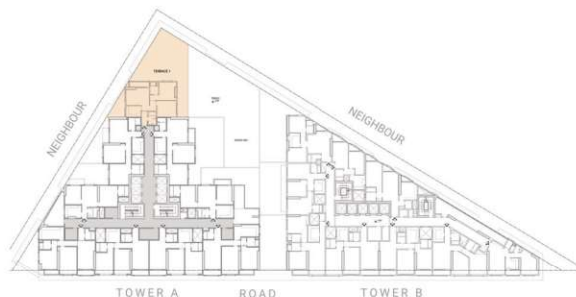


BARAJEEL TOWERS



Disclaimer:

1. All materials, finishes, dimensions and drawings are approximate.
2. Information is subject to change without notice.
3. Actual suite area may vary from the stated area.
4. Drawings are not to scale.
5. The Developer reserves the right to make revisions /alterations without any liability whatsoever.



TOWER A UNIT 01

Apartment:
2 Bedroom

Total Area:
4437.43 SQ.FT.
412.25 SQ.M.

BARAJEEL TOWERS



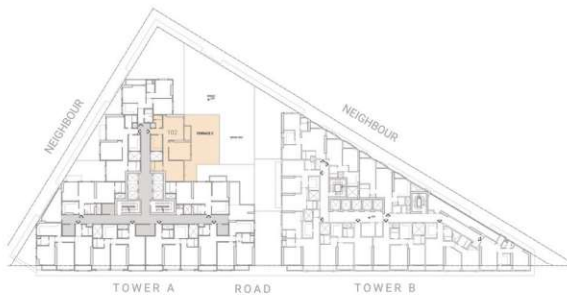
TOWER A UNIT 02

Apartment:
2 Bedroom

Total Area:
3268.02 SQ.FT.
303.61 SQ.M.

Disclaimer:

1. All materials, finishes, dimensions and drawings are approximate.
2. Information is subject to change without notice.
3. Actual suite area may vary from the stated area.
4. Drawings are not to scale.
5. The Developer reserves the right to make revisions /alterations without any liability whatsoever.



BARAJEEL TOWERS



TOWER A UNIT 03

Apartment:
2 Bedroom

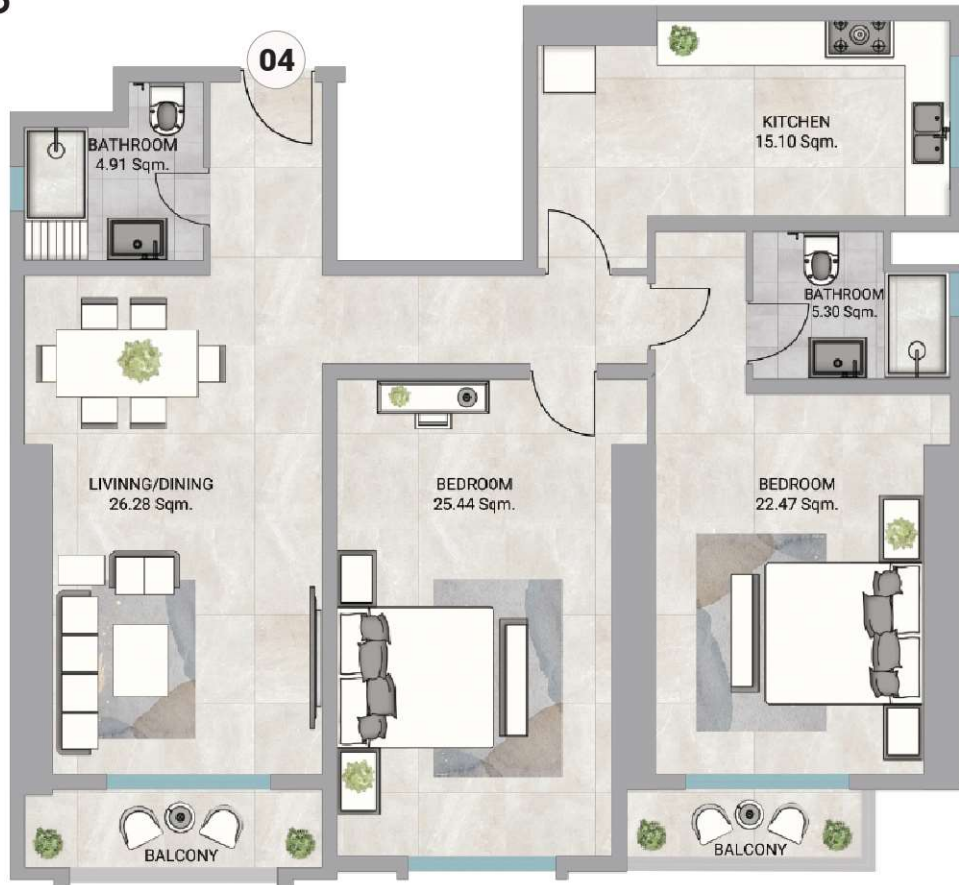
Total Area:
2493.80 SQ.FT.
231.68 SQ.M.

Disclaimer:

1. All materials, finishes, dimensions and drawings are approximate.
2. Information is subject to change without notice.
3. Actual suite area may vary from the stated area.
4. Drawings are not to scale.
5. The Developer reserves the right to make revisions /alterations without any liability whatsoever.



BARAJEEL TOWERS



TOWER A UNIT 04

Apartment:
2 Bedroom

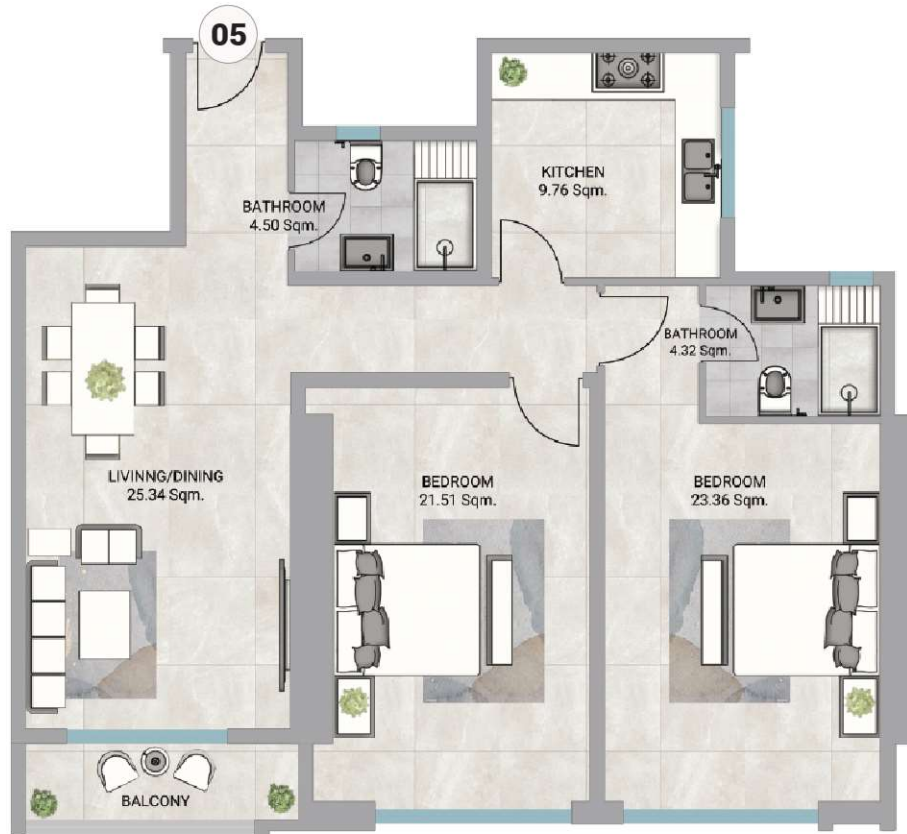
Total Area:
2146.82 SQ.FT.
199.45 SQ.M.

Disclaimer:

1. All materials, finishes, dimensions and drawings are approximate.
2. Information is subject to change without notice.
3. Actual suite area may vary from the stated area.
4. Drawings are not to scale.
5. The Developer reserves the right to make revisions /alterations without any liability whatsoever.



BARAJEEL TOWERS



TOWER A UNIT 05

Apartment:
2 Bedroom

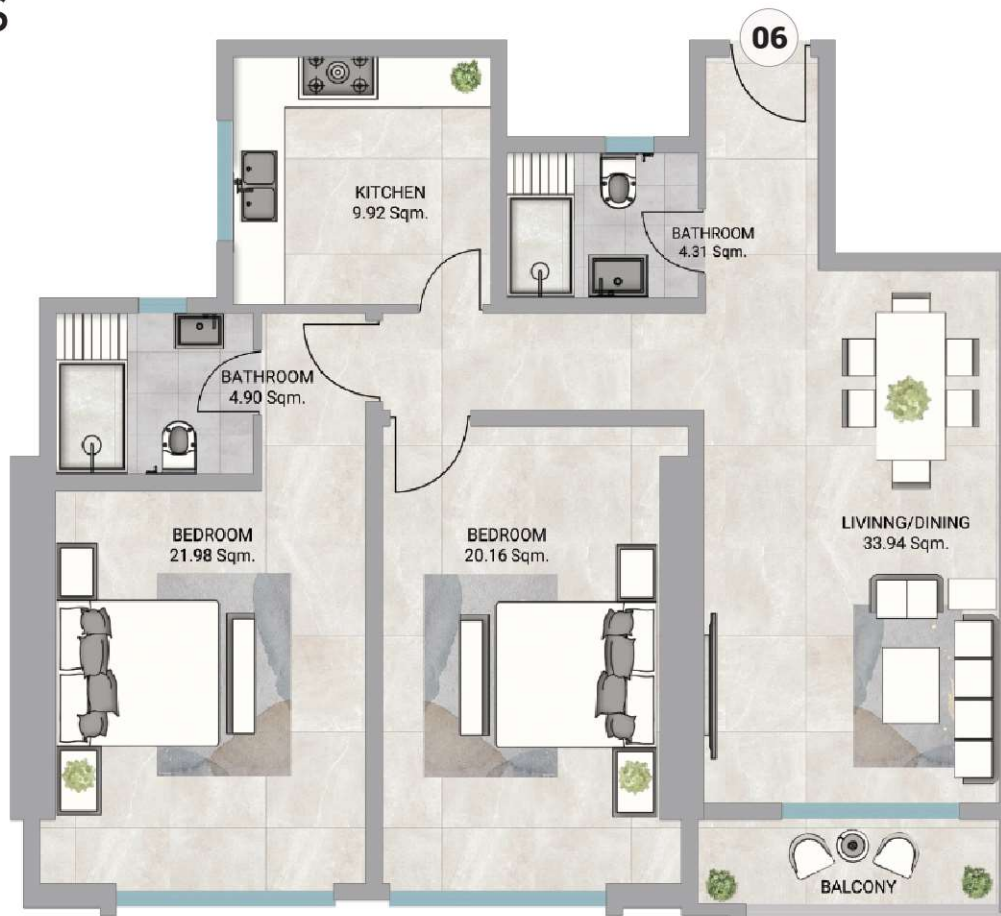
Total Area:
1858.22 SQ.FT.
172.63 SQ.M.

Disclaimer:

1. All materials, finishes, dimensions and drawings are approximate.
2. Information is subject to change without notice.
3. Actual suite area may vary from the stated area.
4. Drawings are not to scale.
5. The Developer reserves the right to make revisions /alterations without any liability whatsoever.



BARAJEEL TOWERS



TOWER A UNIT 06

Apartment:
2 Bedroom

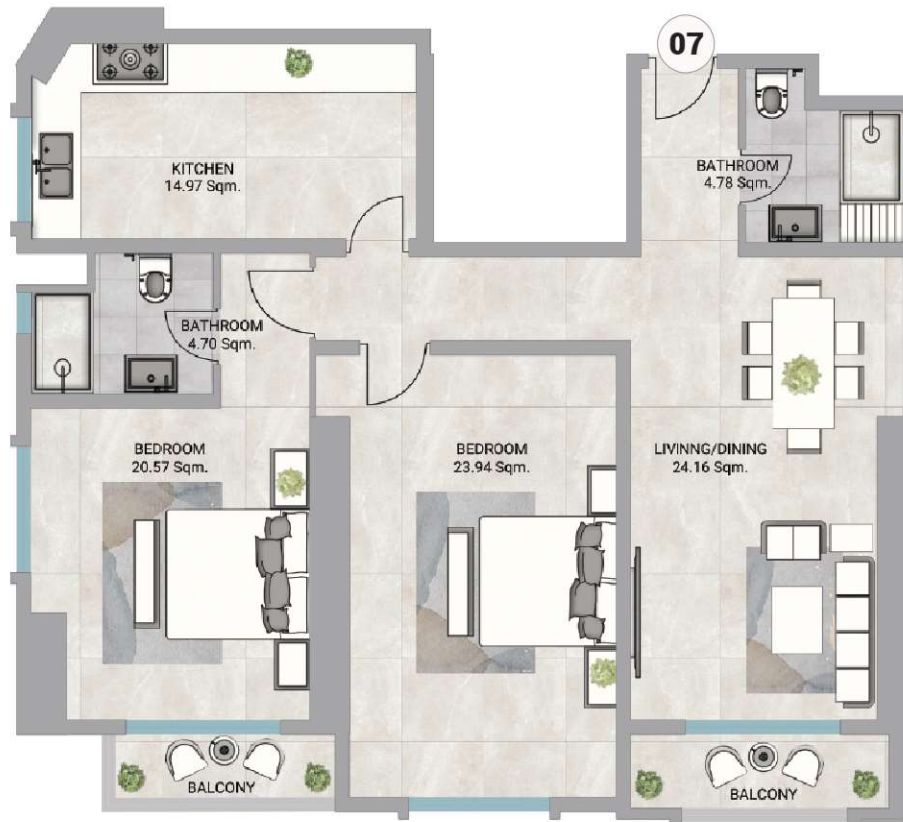
Total Area:
1861.72 SQ.FT.
172.96 SQ.M.

Disclaimer:

1. All materials, finishes, dimensions and drawings are approximate.
2. Information is subject to change without notice.
3. Actual suite area may vary from the stated area.
4. Drawings are not to scale.
5. The Developer reserves the right to make revisions /alterations without any liability whatsoever.



BARAJEEL TOWERS



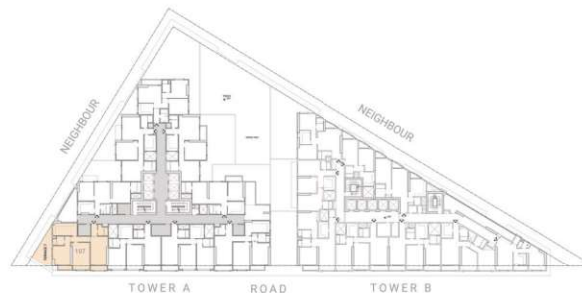
TOWER A UNIT 07

Apartment:
2 Bedroom

Total Area:
2739.36 SQ.FT.
254.50 SQ.M.

Disclaimer:

1. All materials, finishes, dimensions and drawings are approximate.
2. Information is subject to change without notice.
3. Actual suite area may vary from the stated area.
4. Drawings are not to scale.
5. The Developer reserves the right to make revisions /alterations without any liability whatsoever.



BARAJEEL TOWERS



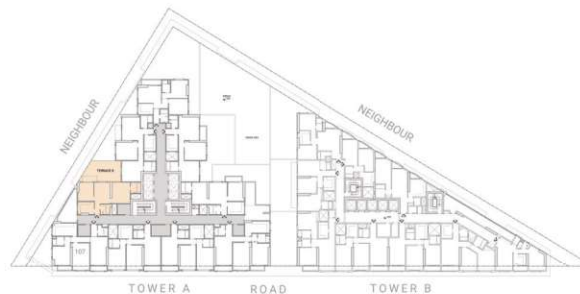
TOWER A UNIT 08

Apartment:
2 Bedroom

Total Area:
2119.12 SQ.FT.
196.87 SQ.M.

Disclaimer:

1. All materials, finishes, dimensions and drawings are approximate.
2. Information is subject to change without notice.
3. Actual suite area may vary from the stated area.
4. Drawings are not to scale.
5. The Developer reserves the right to make revisions /alterations without any liability whatsoever.



BARAJEEL TOWERS



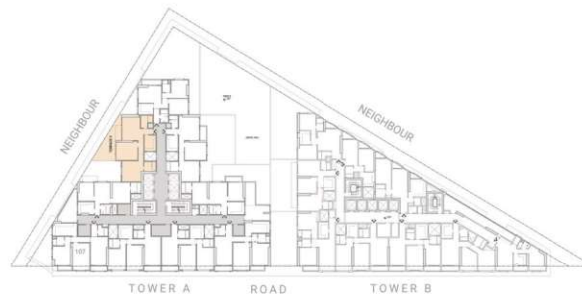
TOWER A UNIT 09

Apartment:
2 Bedroom

Total Area:
2543.18 SQ.FT.
236.27 SQ.M.

Disclaimer:

1. All materials, finishes, dimensions and drawings are approximate.
2. Information is subject to change without notice.
3. Actual suite area may vary from the stated area.
4. Drawings are not to scale.
5. The Developer reserves the right to make revisions /alterations without any liability whatsoever.



BARAJEEL TOWERS



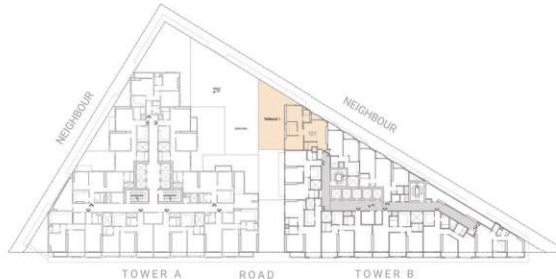
TOWER B UNIT 01

Apartment:
2 Bedroom

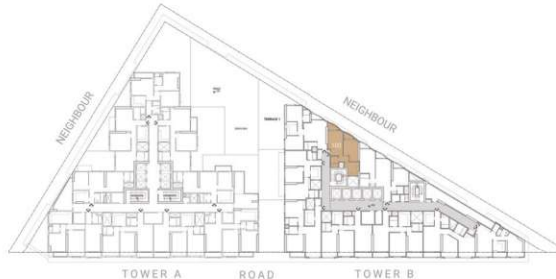
Total Area:
3388.80 SQ.FT.
314.83 SQ.M.

Disclaimer:

1. All materials, finishes, dimensions and drawings are approximate.
2. Information is subject to change without notice.
3. Actual suite area may vary from the stated area.
4. Drawings are not to scale.
5. The Developer reserves the right to make revisions /alterations without any liability whatsoever.



BARAJEEL TOWERS



TOWER B UNIT 02

Apartment:
1 Bedroom

Total Area:
1801.00 SQ.FT.
101.20 SQ.M.

Disclaimer:

1. All materials, finishes, dimensions and drawings are approximate.
2. Information is subject to change without notice.
3. Actual suite area may vary from the stated area.
4. Drawings are not to scale.
5. The Developer reserves the right to make revisions /alterations without any liability whatsoever.

BARAJEEL TOWERS



TOWER B UNIT 03

Apartment:
1 Bedroom

Total Area:
1586.80 SQ.FT.
147.42 SQ.M.

Disclaimer:

1. All materials, finishes, dimensions and drawings are approximate.
2. Information is subject to change without notice.
3. Actual suite area may vary from the stated area.
4. Drawings are not to scale.
5. The Developer reserves the right to make revisions /alterations without any liability whatsoever.

BARAJEEL TOWERS



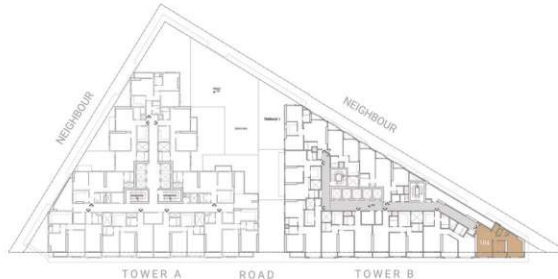
TOWER B UNIT 04

Apartment:
1 Bedroom

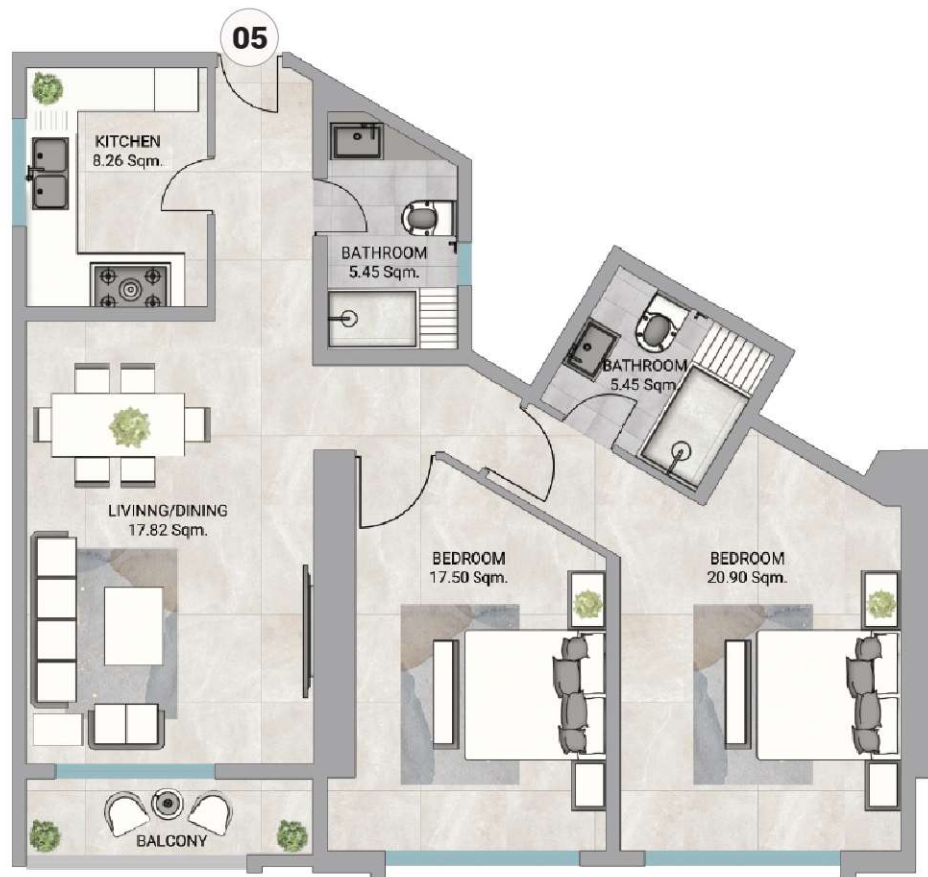
Total Area:
1280.68 SQ.FT.
118.98 SQ.M.

Disclaimer:

1. All materials, finishes, dimensions and drawings are approximate.
2. Information is subject to change without notice.
3. Actual suite area may vary from the stated area.
4. Drawings are not to scale.
5. The Developer reserves the right to make revisions /alterations without any liability whatsoever.

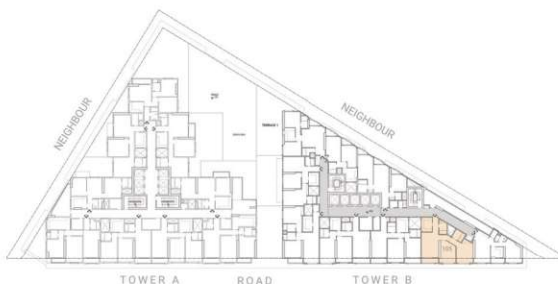


BARAJEEL TOWERS



Disclaimer:

1. All materials, finishes, dimensions and drawings are approximate.
2. Information is subject to change without notice.
3. Actual suite area may vary from the stated area.
4. Drawings are not to scale.
5. The Developer reserves the right to make revisions /alterations without any liability whatsoever.

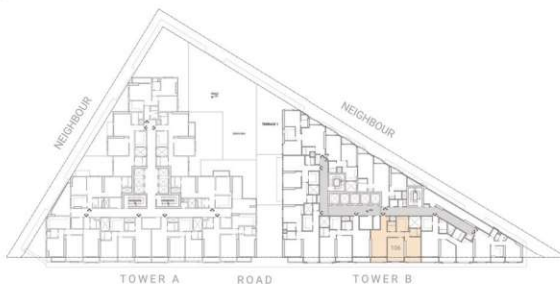
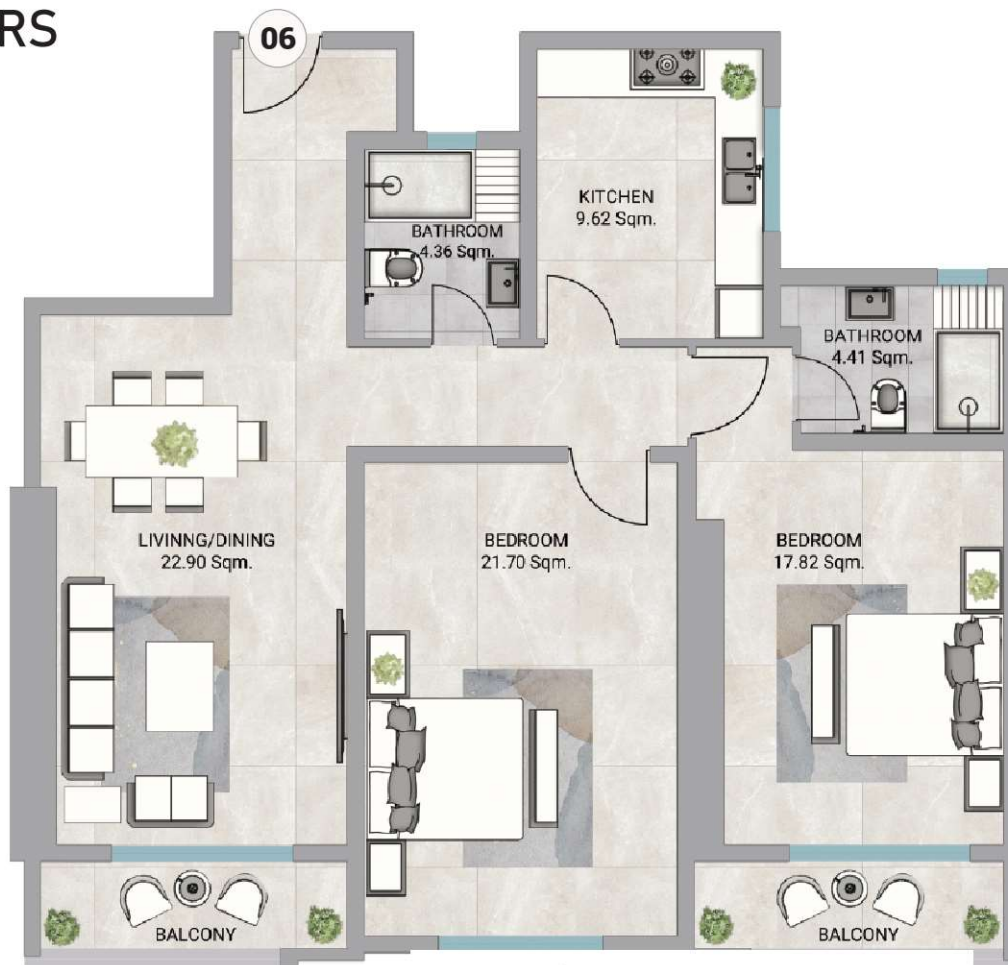


TOWER B UNIT 05

Apartment:
2 Bedroom

Total Area:
1801.00 SQ.FT.
167.32 SQ.M.

BARAJEEL TOWERS



TOWER B UNIT 06

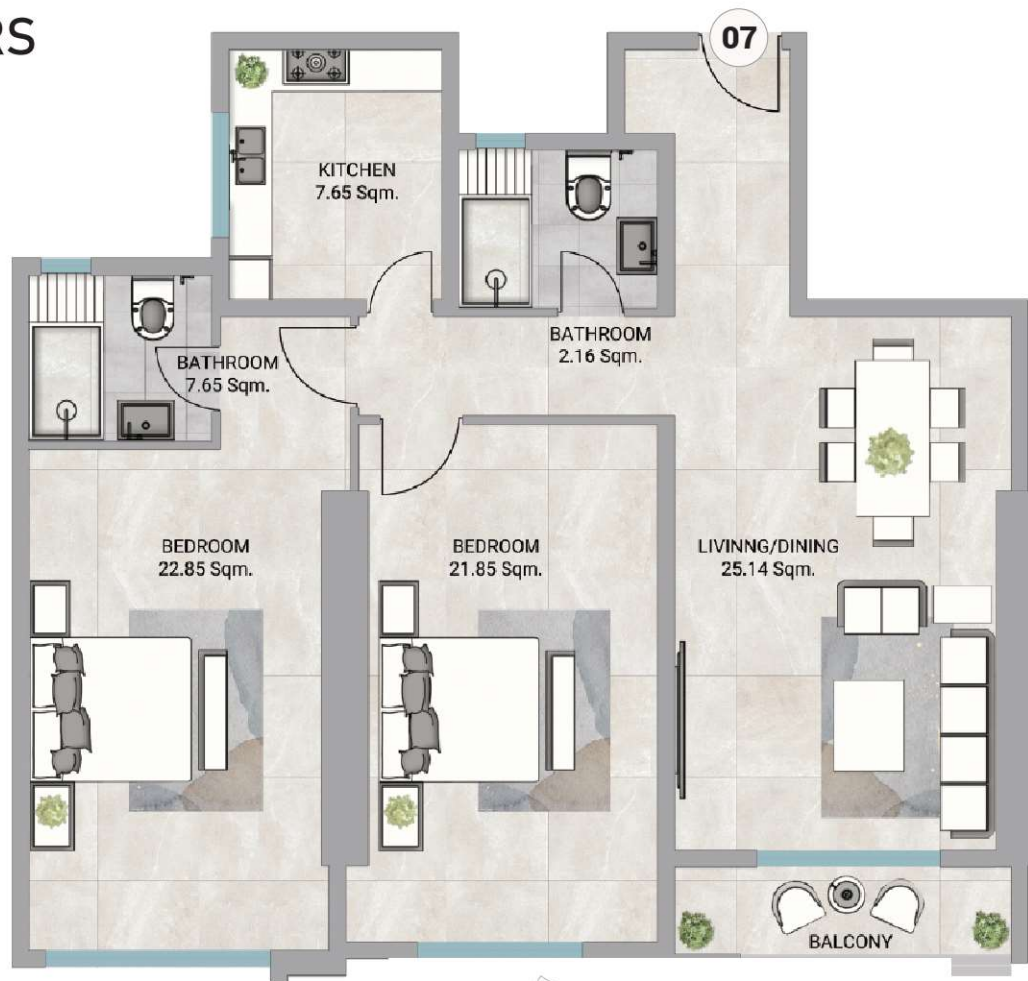
Apartment:
1 Bedroom

Total Area:
1876.90 SQ.FT.
174.37 SQ.M.

Disclaimer:

1. All materials, finishes, dimensions and drawings are approximate.
2. Information is subject to change without notice.
3. Actual suite area may vary from the stated area.
4. Drawings are not to scale.
5. The Developer reserves the right to make revisions /alterations without any liability whatsoever.

BARAJEEL TOWERS



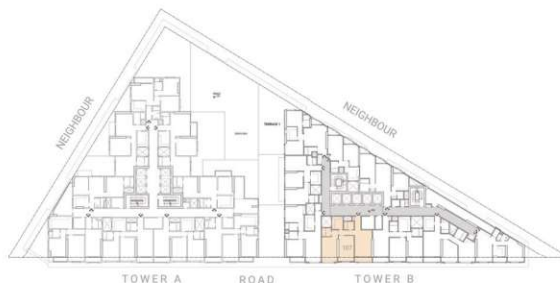
TOWER B UNIT 07

Apartment:
2 Bedroom

Total Area:
1910.10 SQ.FT.
177.45 SQ.M.

Disclaimer:

1. All materials, finishes, dimensions and drawings are approximate.
2. Information is subject to change without notice.
3. Actual suite area may vary from the stated area.
4. Drawings are not to scale.
5. The Developer reserves the right to make revisions /alterations without any liability whatsoever.



BARAJEEL TOWERS



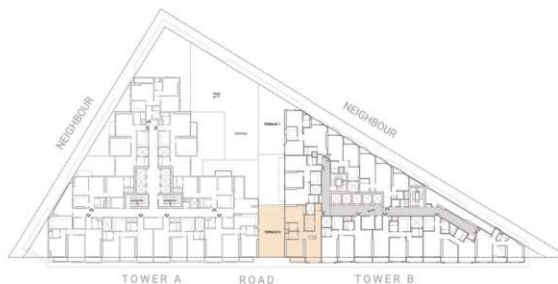
TOWER B UNIT 08

Apartment:
1 Bedroom

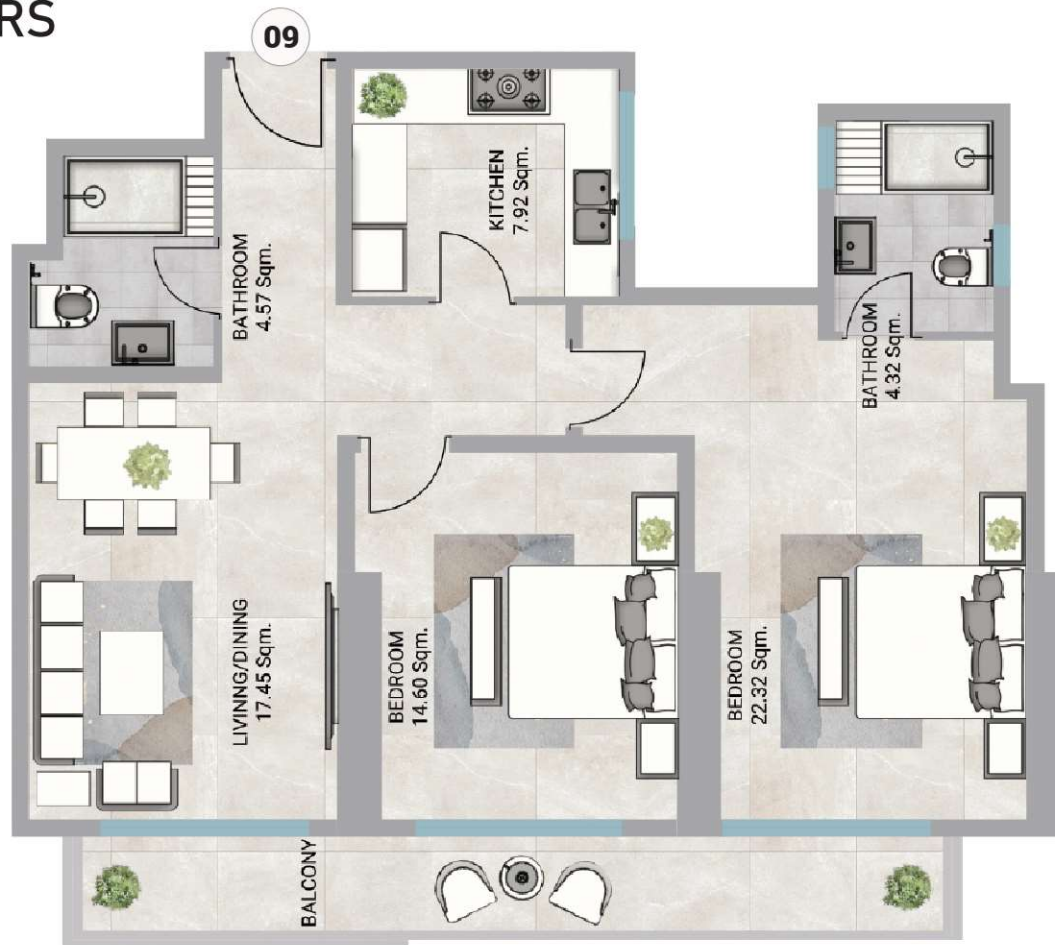
Total Area:
3148.24 SQ.FT.
292.48 SQ.M.

Disclaimer:

1. All materials, finishes, dimensions and drawings are approximate.
2. Information is subject to change without notice.
3. Actual suite area may vary from the stated area.
4. Drawings are not to scale.
5. The Developer reserves the right to make revisions /alterations without any liability whatsoever.



BARAJEEL TOWERS



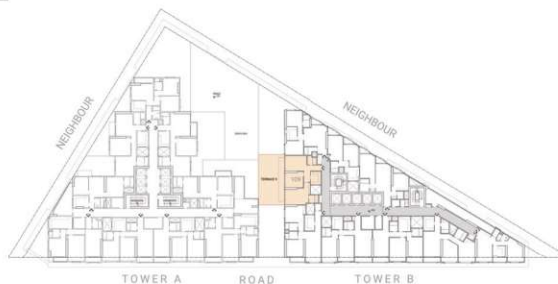
TOWER B UNIT 09

Apartment:
2 Bedroom

Total Area:
2699.66 SQ.FT.
250.81 SQ.M.

Disclaimer:

1. All materials, finishes, dimensions and drawings are approximate.
2. Information is subject to change without notice.
3. Actual suite area may vary from the stated area.
4. Drawings are not to scale.
5. The Developer reserves the right to make revisions /alterations without any liability whatsoever.



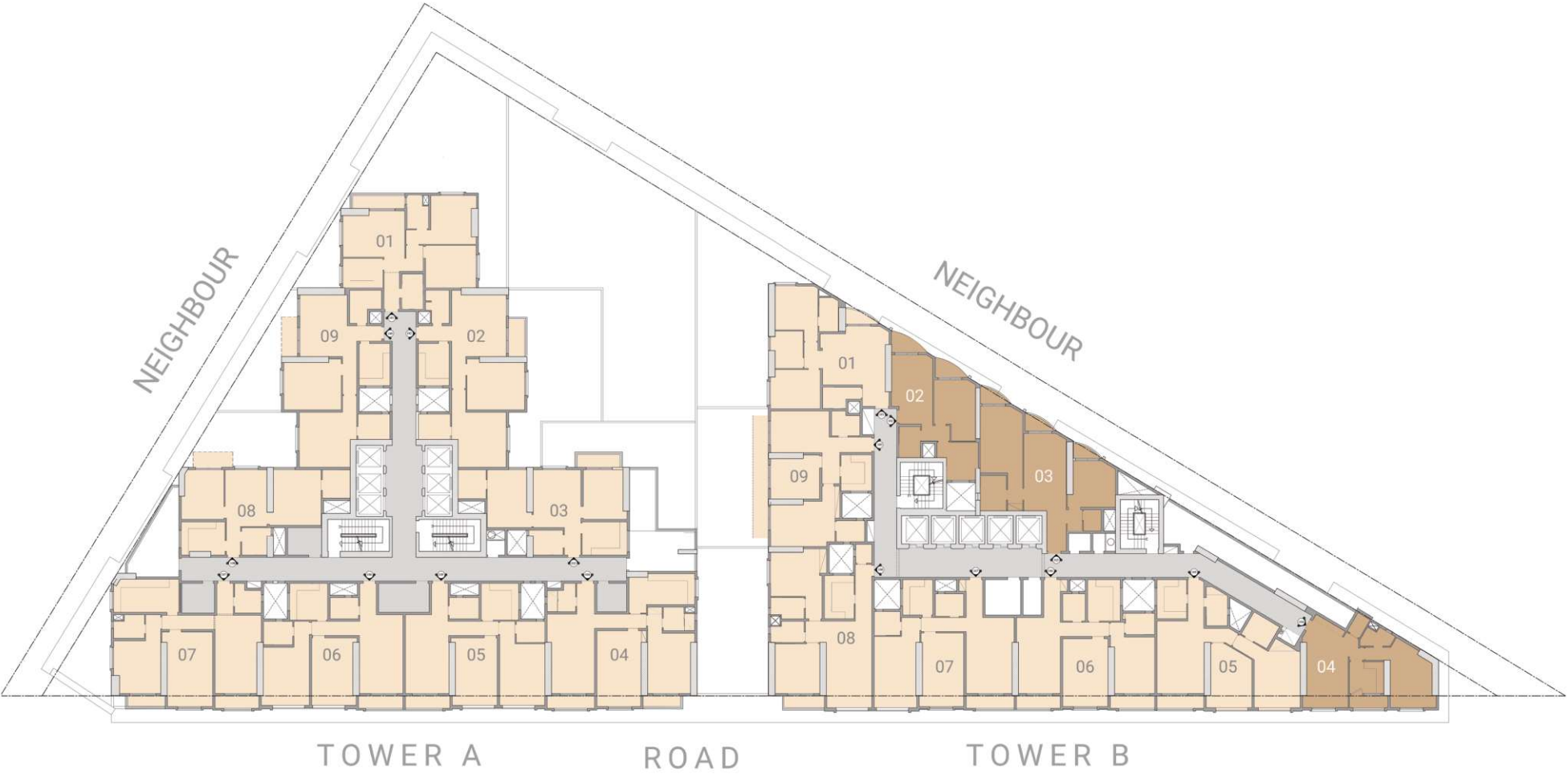
TYPICAL FLOOR PLAN
TOWER A&B

BARAJEEL TOWERS

TYPICAL FLOOR PLAN
TOWER A&B

ONE BEDROOM

TWO BEDROOM



BARAJEEL TOWERS



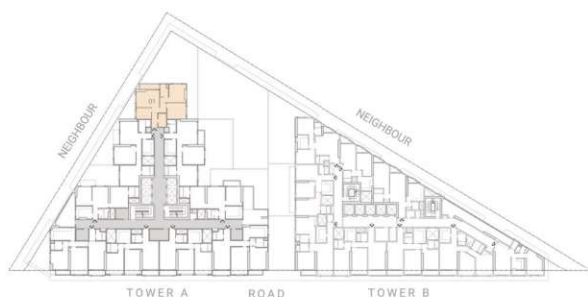
TOWER A UNIT 01

Apartment:
2 Bedroom

Total Area:
1658.70 SQ.FT.
154.10 SQ.M.

Disclaimer:

1. All materials, finishes, dimensions and drawings are approximate.
2. Information is subject to change without notice.
3. Actual suite area may vary from the stated area.
4. Drawings are not to scale.
5. The Developer reserves the right to make revisions /alterations without any liability whatsoever.



BARAJEEL TOWERS



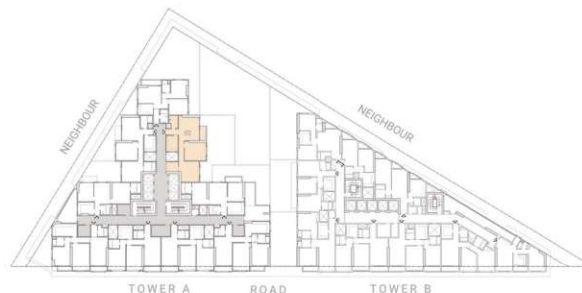
TOWER A UNIT 02

Apartment:
2 Bedroom

Total Area:
1846.87 SQ.FT.
171.58 SQ.M.

Disclaimer:

1. All materials, finishes, dimensions and drawings are approximate.
2. Information is subject to change without notice.
3. Actual suite area may vary from the stated area.
4. Drawings are not to scale.
5. The Developer reserves the right to make revisions /alterations without any liability whatsoever.



BARAJEEL TOWERS



Disclaimer:

1. All materials, finishes, dimensions and drawings are approximate.
2. Information is subject to change without notice.
3. Actual suite area may vary from the stated area.
4. Drawings are not to scale.
5. The Developer reserves the right to make revisions /alterations without any liability whatsoever.

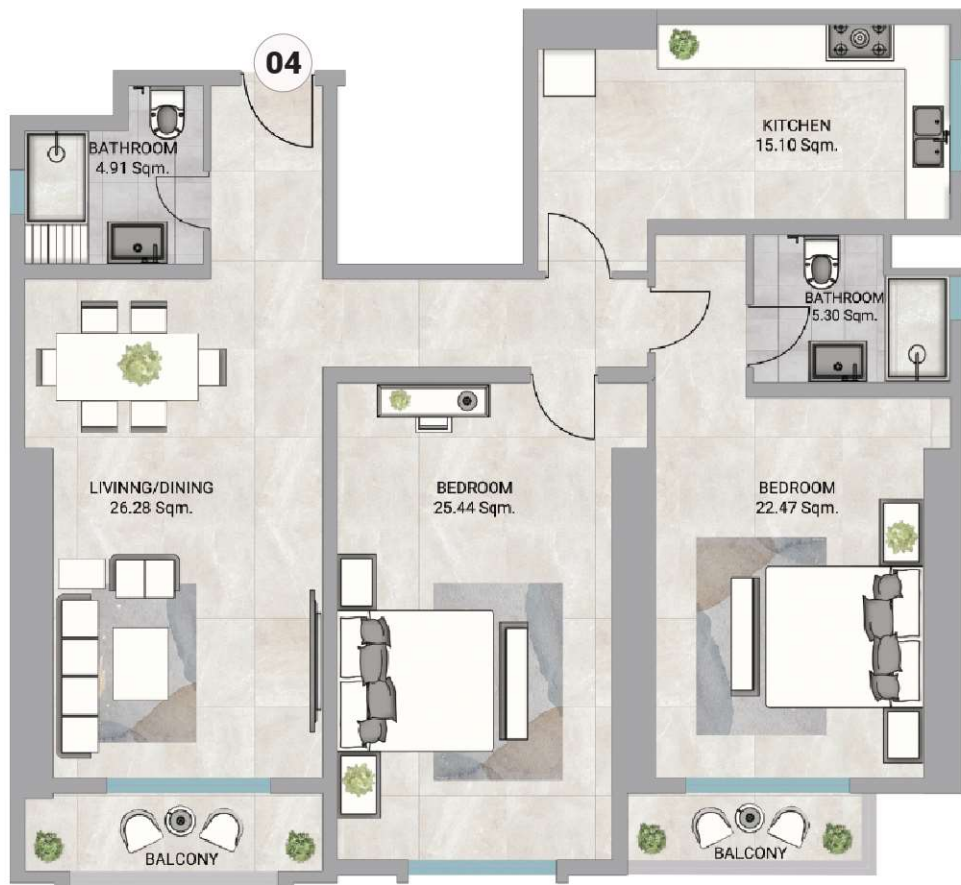


TOWER A UNIT 03

Apartment:
2 Bedroom

Total Area:
1484.70 SQ.FT.
137.93 SQ.M.

BARAJEEL TOWERS



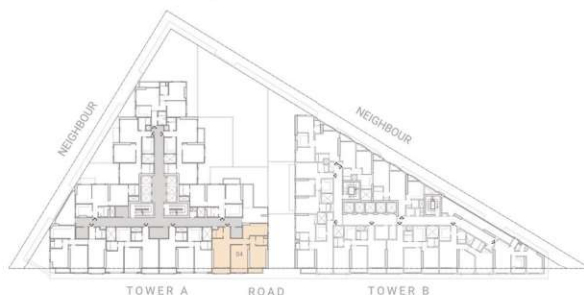
TOWER A UNIT 04

Apartment:
2 Bedroom

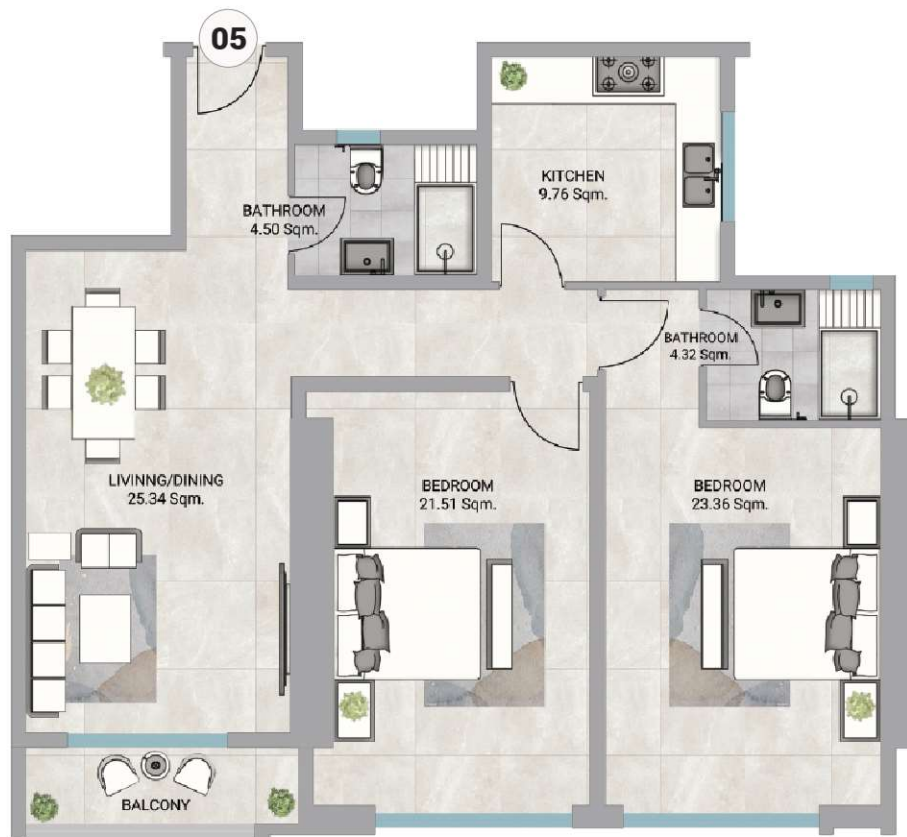
Total Area:
2144.65 SQ.FT.
199.24 SQ.M.

Disclaimer:

1. All materials, finishes, dimensions and drawings are approximate.
2. Information is subject to change without notice.
3. Actual suite area may vary from the stated area.
4. Drawings are not to scale.
5. The Developer reserves the right to make revisions /alterations without any liability whatsoever.



BARAJEEL TOWERS



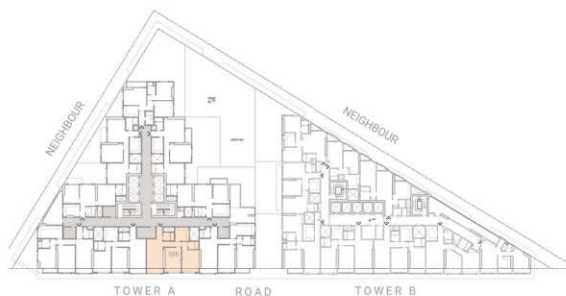
TOWER A UNIT 05

Apartment:
2 Bedroom

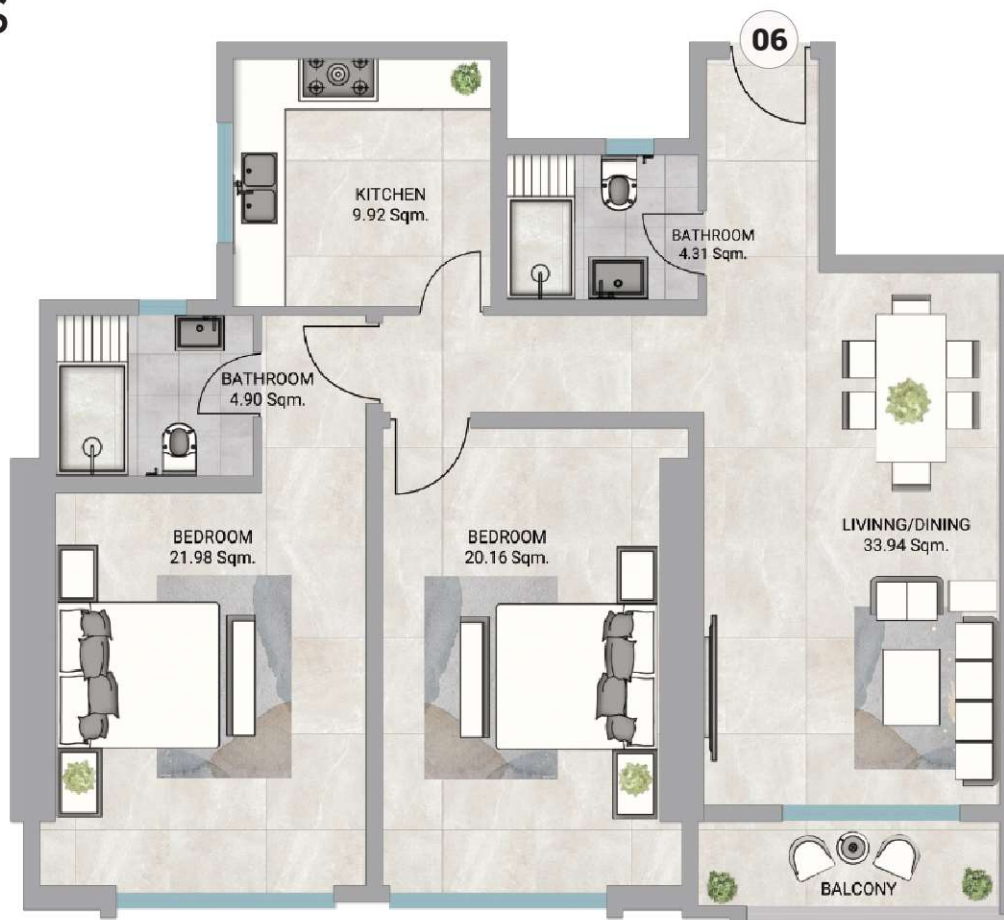
Total Area:
1860.38 SQ.FT.
172.84 SQ.M.

Disclaimer:

1. All materials, finishes, dimensions and drawings are approximate.
2. Information is subject to change without notice.
3. Actual suite area may vary from the stated area.
4. Drawings are not to scale.
5. The Developer reserves the right to make revisions /alterations without any liability whatsoever.



BARAJEEL TOWERS



TOWER A UNIT 06

Apartment:
2 Bedroom

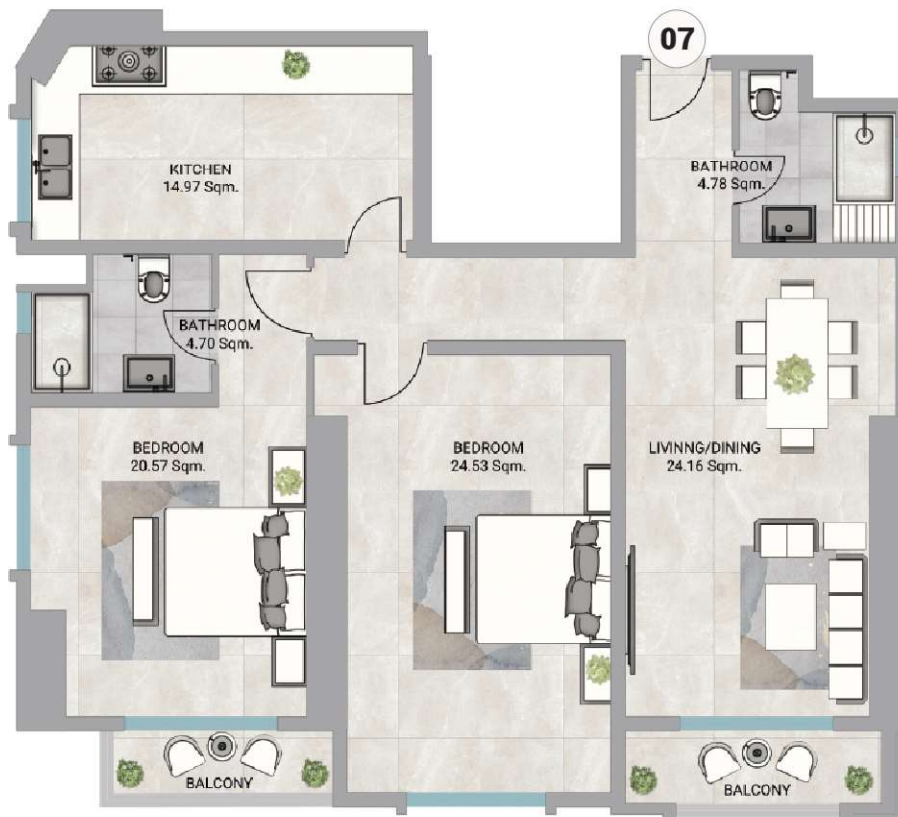
Total Area:
1863.72 SQ.FT.
173.15 SQ.M.

Disclaimer:

1. All materials, finishes, dimensions and drawings are approximate.
2. Information is subject to change without notice.
3. Actual suite area may vary from the stated area.
4. Drawings are not to scale.
5. The Developer reserves the right to make revisions /alterations without any liability whatsoever.



BARAJEEL TOWERS



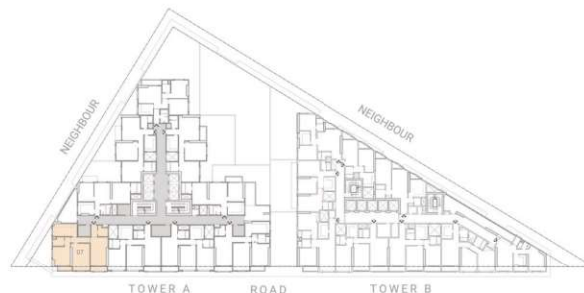
TOWER A UNIT 07

Apartment:
2 Bedroom

Total Area:
2094.43 SQ.FT.
194.58 SQ.M.

Disclaimer:

1. All materials, finishes, dimensions and drawings are approximate.
2. Information is subject to change without notice.
3. Actual suite area may vary from the stated area.
4. Drawings are not to scale.
5. The Developer reserves the right to make revisions /alterations without any liability whatsoever.



BARAJEEL TOWERS



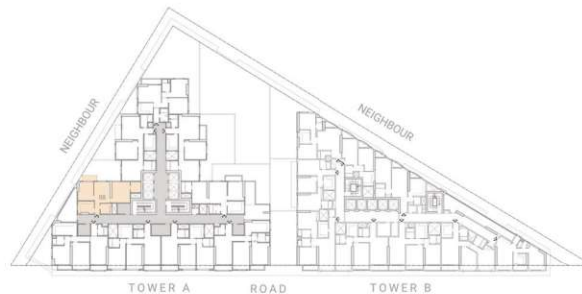
TOWER A UNIT 08

Apartment:
2 Bedroom

Total Area:
1440.33 SQ.FT.
133.81 SQ.M.

Disclaimer:

1. All materials, finishes, dimensions and drawings are approximate.
2. Information is subject to change without notice.
3. Actual suite area may vary from the stated area.
4. Drawings are not to scale.
5. The Developer reserves the right to make revisions /alterations without any liability whatsoever.



BARAJEEL TOWERS



TOWER A UNIT 09

Apartment:
2 Bedroom

Total Area:
1839.03 SQ.FT.
170.85 SQ.M.

Disclaimer:

1. All materials, finishes, dimensions and drawings are approximate.
2. Information is subject to change without notice.
3. Actual suite area may vary from the stated area.
4. Drawings are not to scale.
5. The Developer reserves the right to make revisions /alterations without any liability whatsoever.



BARAJEEL TOWERS



TOWER B UNIT 01

Apartment:
2 Bedroom

Total Area:
1590.47 SQ.FT.
147.76 SQ.M.

Disclaimer:

1. All materials, finishes, dimensions and drawings are approximate.
2. Information is subject to change without notice.
3. Actual suite area may vary from the stated area.
4. Drawings are not to scale.
5. The Developer reserves the right to make revisions /alterations without any liability whatsoever.



BARAJEEL TOWERS



TOWER B UNIT 02

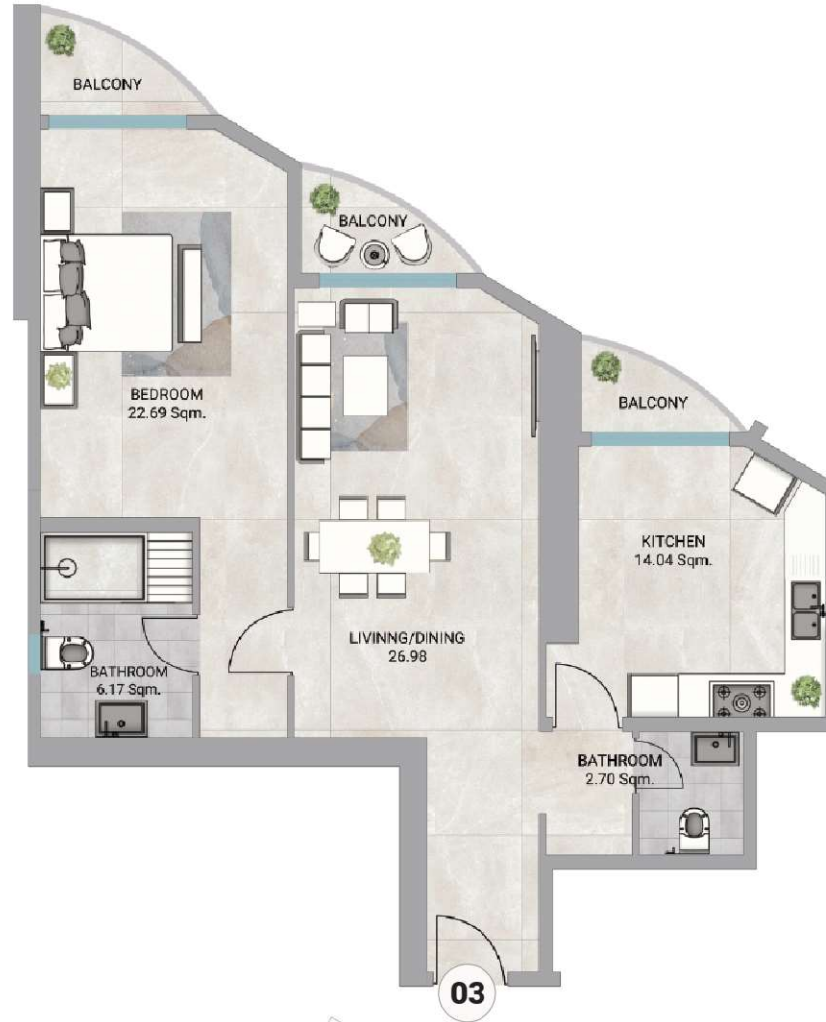
Apartment:
1 Bedroom

Total Area:
1088.17 SQ.FT.
1101.09 SQ.M.

Disclaimer:

1. All materials, finishes, dimensions and drawings are approximate.
2. Information is subject to change without notice.
3. Actual suite area may vary from the stated area.
4. Drawings are not to scale.
5. The Developer reserves the right to make revisions /alterations without any liability whatsoever.

BARAJEEL TOWERS



TOWER B UNIT 03

Apartment:
1 Bedroom

Total Area:
1565.78 SQ.FT.
145.47 SQ.M.

Disclaimer:

1. All materials, finishes, dimensions and drawings are approximate.
2. Information is subject to change without notice.
3. Actual suite area may vary from the stated area.
4. Drawings are not to scale.
5. The Developer reserves the right to make revisions /alterations without any liability whatsoever.



BARAJEEL TOWERS



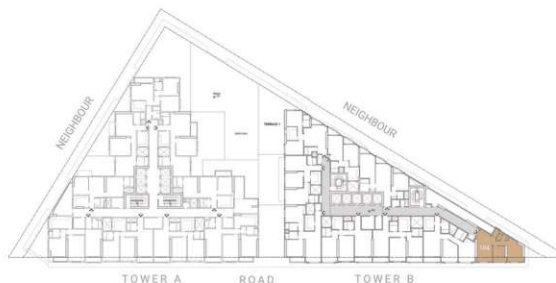
TOWER B UNIT 04

Apartment:
1 Bedroom

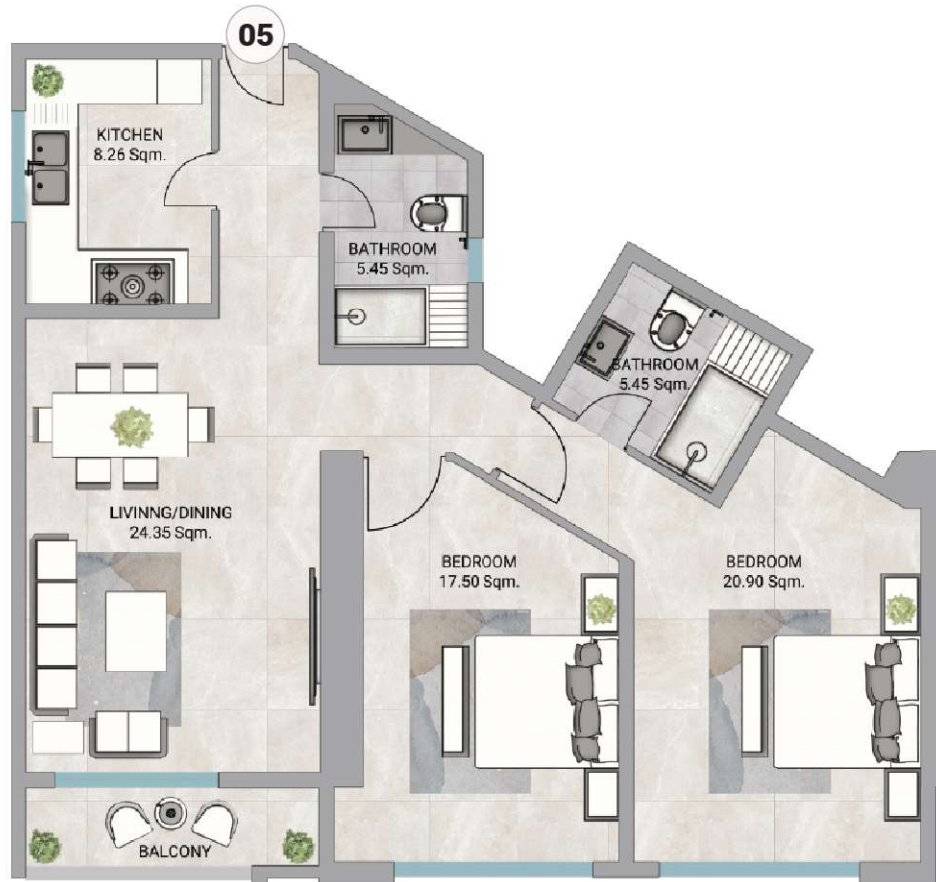
Total Area:
1281.35 SQ.FT.
119.04 SQ.M.

Disclaimer:

1. All materials, finishes, dimensions and drawings are approximate.
2. Information is subject to change without notice.
3. Actual suite area may vary from the stated area.
4. Drawings are not to scale.
5. The Developer reserves the right to make revisions /alterations without any liability whatsoever.



BARAJEEL TOWERS



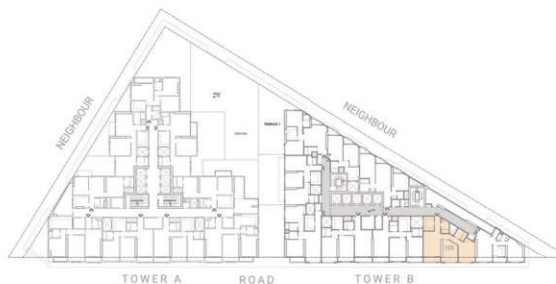
TOWER B UNIT 05

Apartment:
2 Bedroom

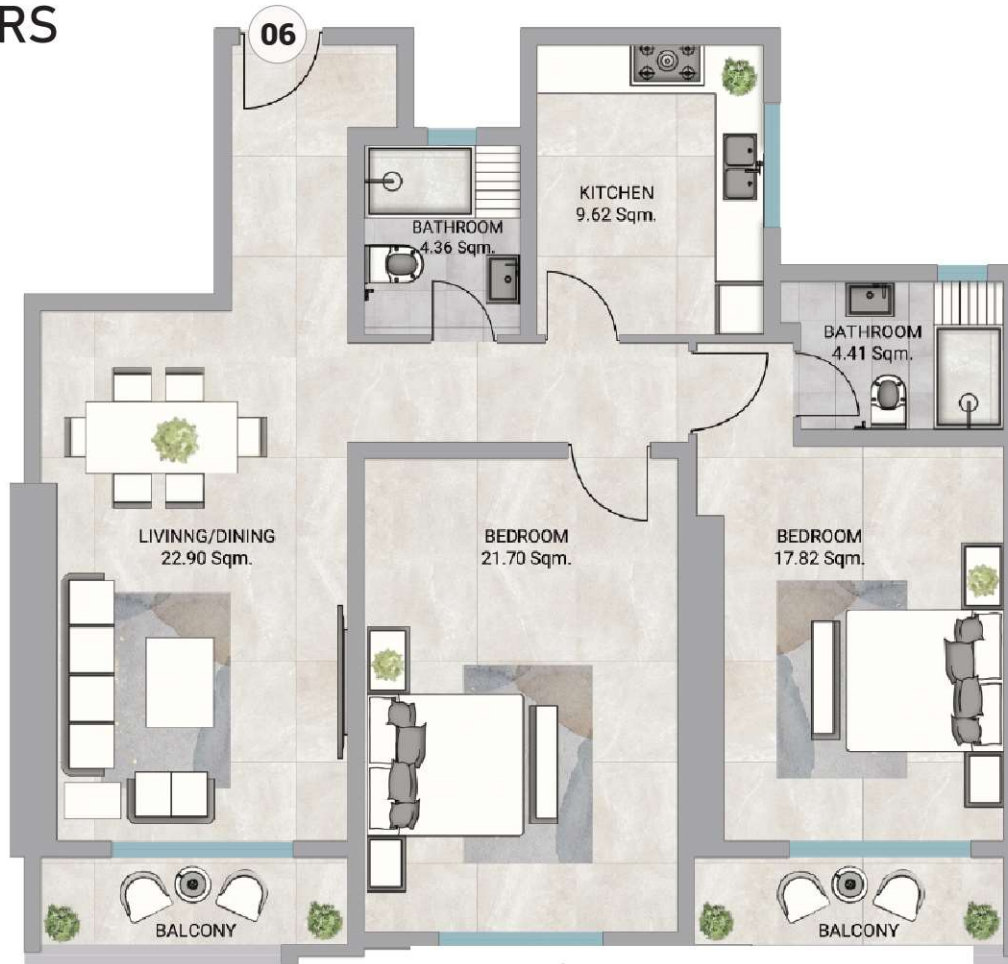
Total Area:
1800.33 SQ.FT.
167.26 SQ.M.

Disclaimer:

1. All materials, finishes, dimensions and drawings are approximate.
2. Information is subject to change without notice.
3. Actual suite area may vary from the stated area.
4. Drawings are not to scale.
5. The Developer reserves the right to make revisions /alterations without any liability whatsoever.



BARAJEEL TOWERS



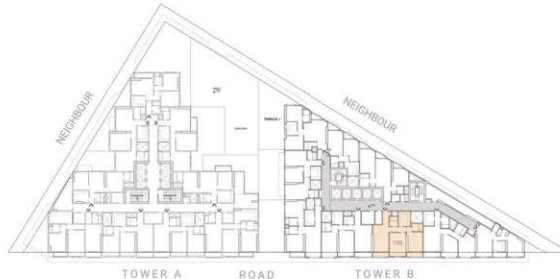
TOWER B UNIT 06

Apartment:
1 Bedroom

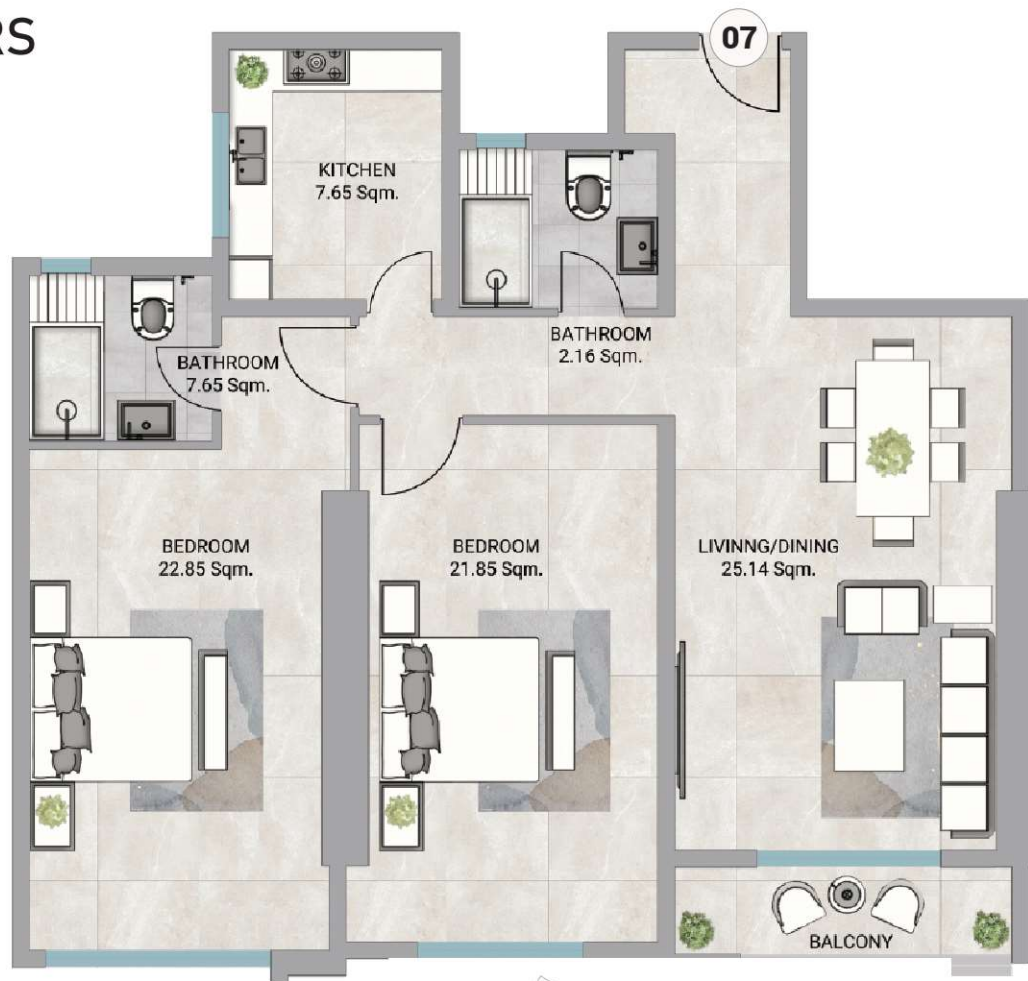
Total Area:
1876.90 SQ.FT.
174.37 SQ.M.

Disclaimer:

1. All materials, finishes, dimensions and drawings are approximate.
2. Information is subject to change without notice.
3. Actual suite area may vary from the stated area.
4. Drawings are not to scale.
5. The Developer reserves the right to make revisions /alterations without any liability whatsoever.



BARAJEEL TOWERS



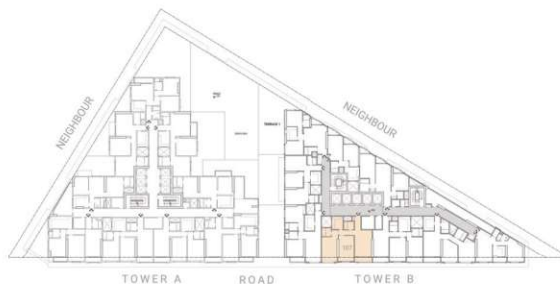
TOWER B UNIT 07

Apartment:
2 Bedroom

Total Area:
1910.10 SQ.FT.
177.45 SQ.M.

Disclaimer:

1. All materials, finishes, dimensions and drawings are approximate.
2. Information is subject to change without notice.
3. Actual suite area may vary from the stated area.
4. Drawings are not to scale.
5. The Developer reserves the right to make revisions /alterations without any liability whatsoever.



BARAJEEL TOWERS



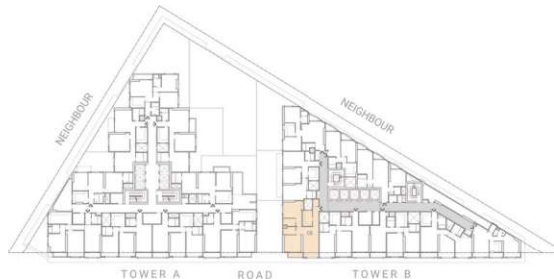
TOWER B UNIT 08

Apartment:
1 Bedroom

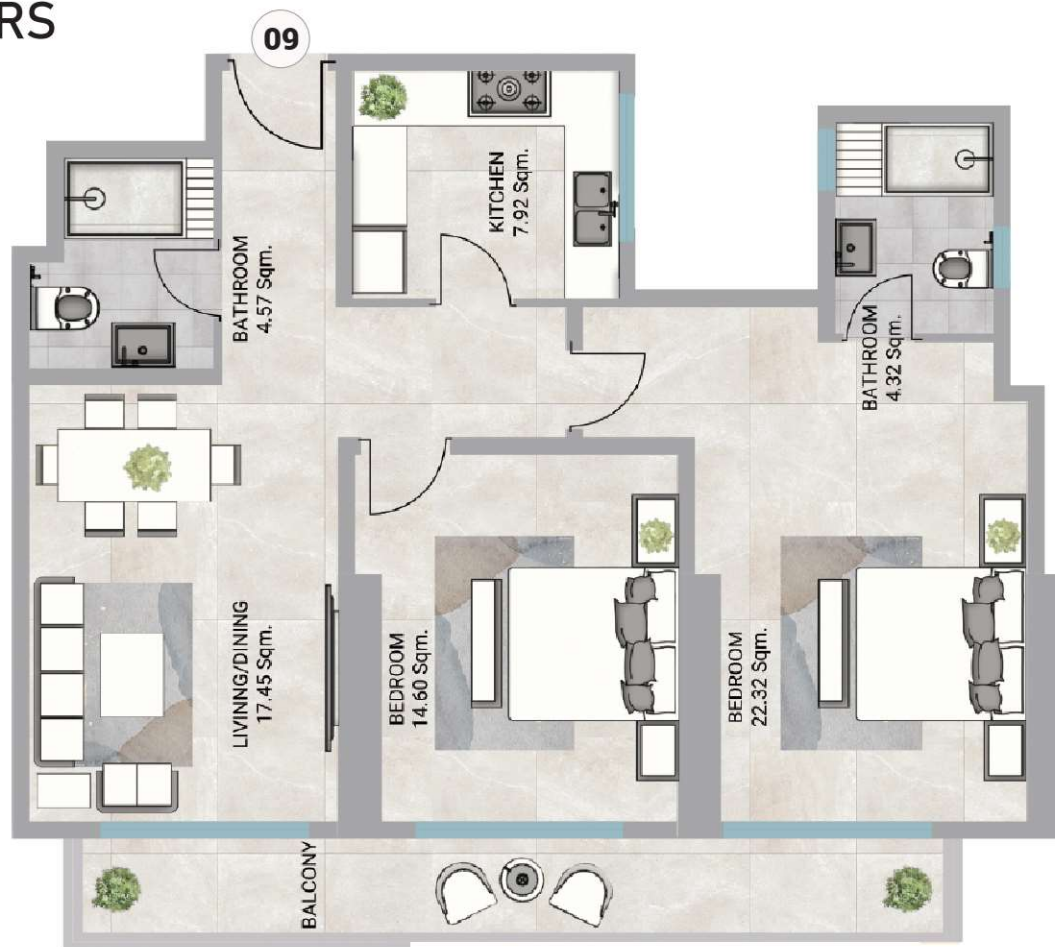
Total Area:
1900.92 SQ.FT.
176.60 SQ.M.

Disclaimer:

1. All materials, finishes, dimensions and drawings are approximate.
2. Information is subject to change without notice.
3. Actual suite area may vary from the stated area.
4. Drawings are not to scale.
5. The Developer reserves the right to make revisions /alterations without any liability whatsoever.



BARAJEEL TOWERS



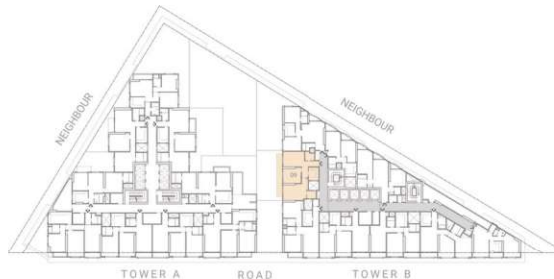
TOWER B UNIT 09

Apartment:
2 Bedroom

Total Area:
1730.76 SQ.FT.
160.79 SQ.M.

Disclaimer:

1. All materials, finishes, dimensions and drawings are approximate.
2. Information is subject to change without notice.
3. Actual suite area may vary from the stated area.
4. Drawings are not to scale.
5. The Developer reserves the right to make revisions /alterations without any liability whatsoever.



PAYMENT PLAN

10%
DownPayment

6
Years Payment Plan

100%
Freehold for all nationalities



