



WYNWOOD

BY IMTIAZ

DUBAI ISLANDS

IMTIAZ





## WELCOME TO WYNWOOD

Welcome to Wynwood Residence by Imtiaz, an architectural sanctuary rising on the prestigious shores of the Dubai Islands. Poised along the coastline, Wynwood is a sculpted reflection of serenity and sophistication, designed for those who seek stillness without compromise. This rare residential offering blends timeless design with curated amenities, offering a lifestyle where every detail is shaped by purpose and precision. Set just minutes from Dubai's most iconic landmarks, including Downtown Dubai, DIFC, and Dubai International Airport, Wynwood enjoys seamless connectivity while feeling a world apart.

Dubai Islands, one of the city's most visionary masterplans, offers a refined coastal setting with expansive waterfronts, crystal-clear waters, and unmatched tranquillity, yet remains close to Michelin-starred dining, vibrant retail, and cultural destinations. Wynwood Residence stands apart through its poetic integration of form and function. Every residence is fully furnished and composed with intention, featuring high ceilings, panoramic glazing, and bespoke interiors that blend natural textures with contemporary warmth. From 1 to 4-bedroom homes and exclusive duplexes, each unit is crafted to reflect a life of calm, clarity, and quiet luxury.

Beyond its sculpted architecture, Wynwood is elevated by its podium lifestyle, a multi-tiered realm of experiences that includes a horizon-edge infinity pool, sunken lounge, outdoor yoga terrace, curated clubhouse, and the iconic Whisper Steps amphitheatre staircase. Landscaped walkways, green courtyards, and children's play zones enrich the community while dining pods and extended terraces create space to pause, gather, and breathe. The exclusive penthouses offer an even rarer experience, each featuring a private rooftop retreat with an infinity pool, open-air bar, garden terraces, and panoramic views of the Arabian Gulf. Every rooftop is designed as a gallery of light, leisure, and layered elegance. Living at Wynwood is not simply about ownership but embracing a signature lifestyle of balance, beauty, and presence. This is not a place for everyone. It is a place for those who understand that true refinement is never loud, always deliberate.

A handwritten signature in white ink, reading 'Masih Imtiaz', positioned above the name and title.

Masih Imtiaz  
CEO, Imtiaz Developments





## FOR THE FORTUNATE FEW

There are places made for everyone. And then there is Wynwood. Composed with care, intended for those who move through the world differently, elegantly and extraordinarily.







CRAFTED FOR THE VISIONARY





# PRECISION IN EVERY BOUNDLESS POSSIBILITY

Each apartment in Wynwood Residence defines and challenges ultra-luxury. Like sculpted forms carved from coastal stillness, they belong to a rare collection of homes created for those who dwell beyond convention.







The skyline stands in the distance—bold, brilliant, and alive. From Wynwood, you see it all, yet feel none of its weight. Life on Dubai Islands unfolds at a gentler pace. Softer. Slower. Every line of architecture designed to frame your world—not rush it.

WYNWOOD | IMTIAZ

WYNWOOD  
BY IMTIAZ

IMTIAZ







## THE POISED FINALE TO EVERY JOURNEY YOU BEGIN

A space where presence, power, and architecture align in quiet harmony. In a world shaped by detail and distinction, Wynwood is the address that reflects who you are, long before you step through its doors. Here, style isn't worn. It's lived.





W WYNWOOD  
BY IMTIAZ

WYNWOOD BY IMTIAZ







## THE RAREST THINGS WHISPER

Some things whisper, and in that silence, they endure. Wynwood is crafted not to stand out but to stand the test of time, with thoughtful architecture, restrained elegance, and homes that speak to those who listen differently.





# IN THE EMBRACE OF THE ISLAND

Dubai Islands represents an innovative development in line with the Dubai 2040 Urban Master Plan, focusing on crafting sustainable communities that bolster connectivity, tourism, and quality of life. This initiative also seeks to drive economic development and uphold environmental protection.







## A LOCATION THAT IS A STATEMENT

Wynwood Residence rises along the tranquil coastline of Dubai Islands. As one of Dubai's most evocative new coastlines, Dubai Islands carries the quiet promise of beginnings. Once desolate, now awake, its shores reflect the city's boldest aspirations, where the sea has waited patiently for architecture worthy of its view.

W Y N W O O D  
I M T I A Z



W  
WYNWOOD  
BY IMTIAZ

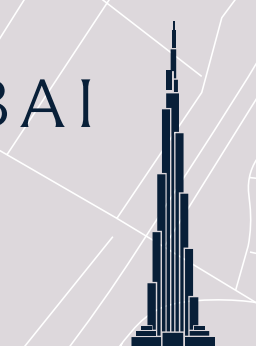
GOLD SOUQ  
METRO STATION

DUBAI  
INTERNATIONAL  
AIRPORT

DUBAI FRAME

DWTC

DUBAI



DOWNTOWN  
DUBAI  
BUSINESS BAY





## JUST 15 MINUTES AWAY

Wynwood Residence is just minutes from it all—yet worlds away in spirit. Only 5 minutes from Dubai Islands Marina, 10 minutes from Deira Waterfront, and 15 minutes from Dubai International Airport, The Dubai Frame, and Downtown Dubai. Enjoy seamless access to Dubai Mall, The Dubai Fountain, Ski Dubai, and DIFC Art Galleries—all within 20 minutes. Every destination is within reach, while your home remains anchored in island stillness.

**DOWNTOWN  
DUBAI**



**DUBAI MALL**

**OPERA GALLERY**





WYNWOOD | IMTIAZ



Wynwood Residence redefines elevated living through sculpted architecture, bespoke finishes.







WYNWOOD

## NATURE, HELD GENTLY WITHIN

In the heart of Wynwood Residence, the green courtyard offers calm in substance. It is a place where mornings stretch, memories take root, and stillness becomes part of the story.





WYNWOOD | I M T I A Z







WYNWOOD JIMTIAZ

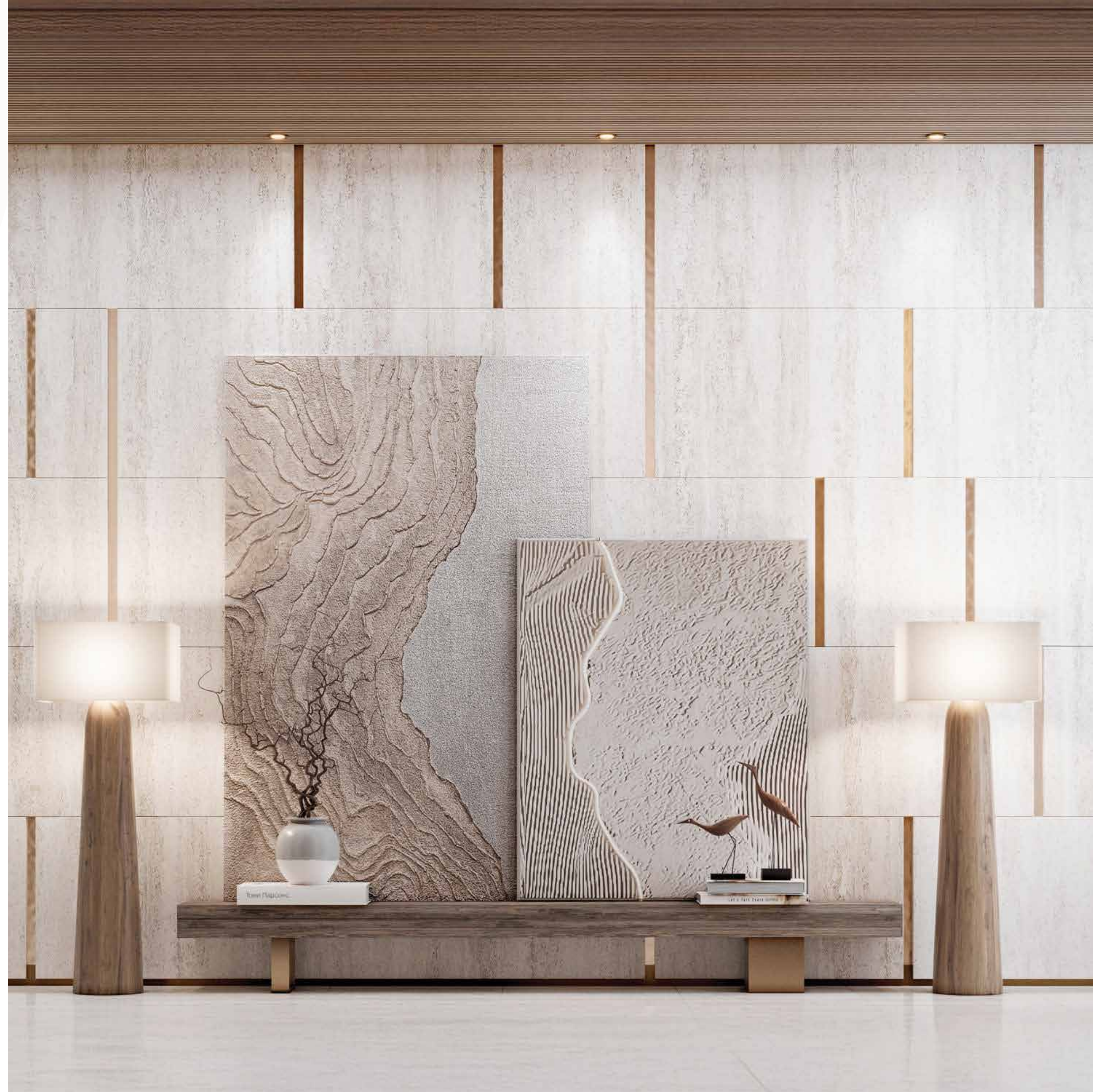






## A MAJESTIC WELCOME AWAITS YOUR ARRIVAL

Arrive beneath layered light and gentle stone, into an extravagant lobby composed in quiet harmony and open to the sky above. Around it, artefacts, textures, and soft greenery set a rhythm of calm, an overture to the life waiting above.









WYNWOOD | IMTIAZ



IMTIAZ  
DEVELOPMENTS

WYNWOOD



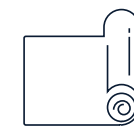


# THE ARCHITECTURAL SOLACE THAT THE PODIUM EXPERIENCE REFLECTS

The podium experience at Wynwood Residence is otherworldly, a sculpted layer of calm, where life breathes fearlessly. It is a feeling designed to be relished and lingered on.



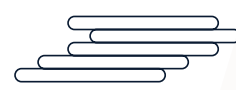
VIP  
PARKING



YOGA  
TERRACE



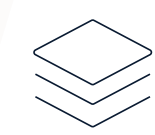
POOL  
DECK



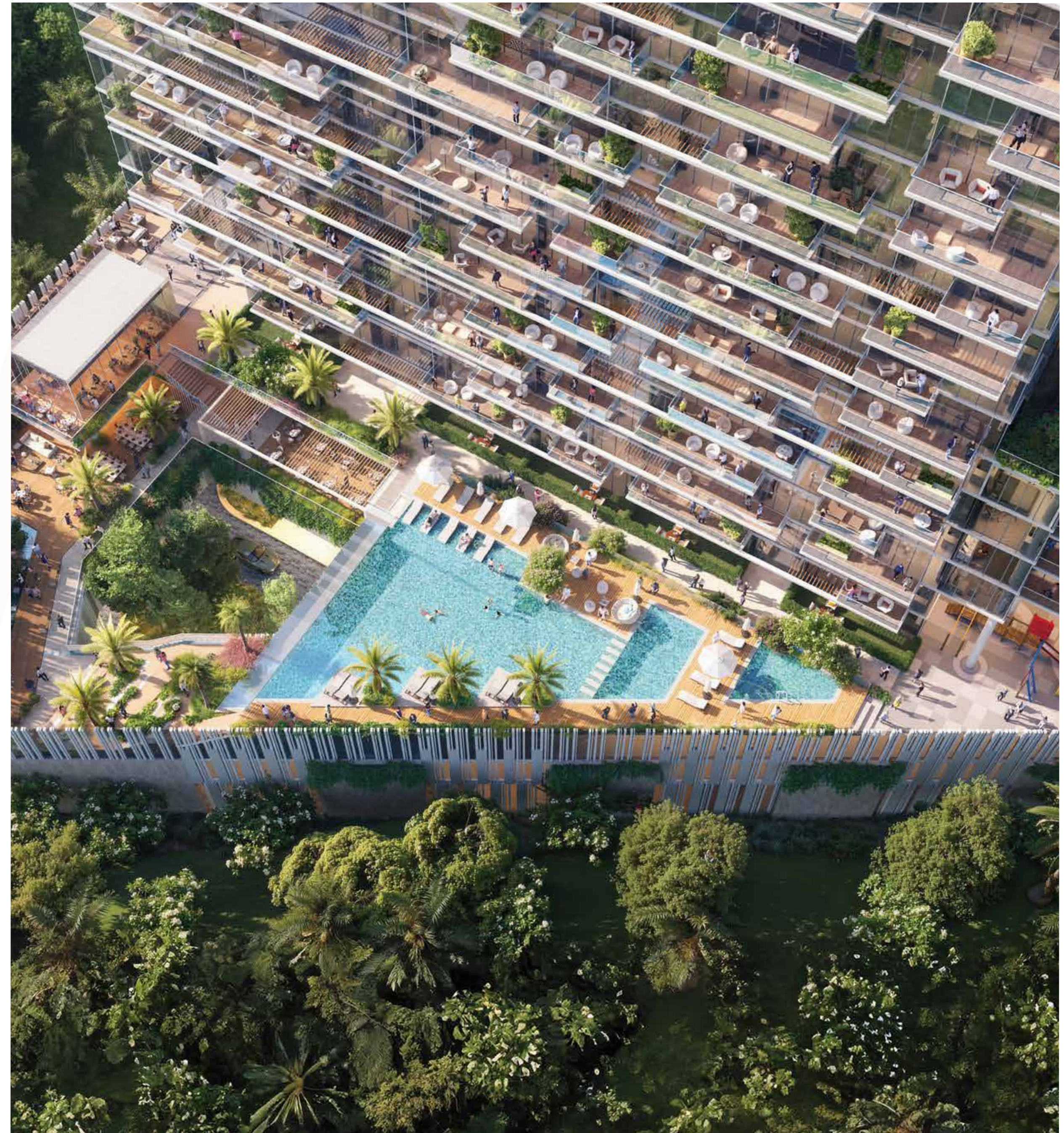
ICONIC  
STAIRCASE



PEDESTRIAN  
PATHWAY



MULTIPLE  
PODIUM LEVELS

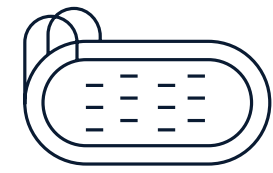




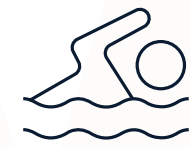
# AMENITIES



FULLY  
EQUIPPED GYM



JACUZZI



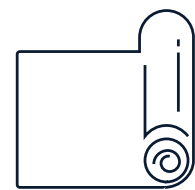
INFINITY  
POOL



BBQ  
AREA



GREEN  
COURTYARD



YOGA  
TERRACE



CLUBHOUSE



ICONIC  
STAIRCASE



MULTIPLE PODIUM  
LEVELS



ELECTRIC VEHICLE  
RECHARGE STATION



WYNWOOD | IMTIAZ





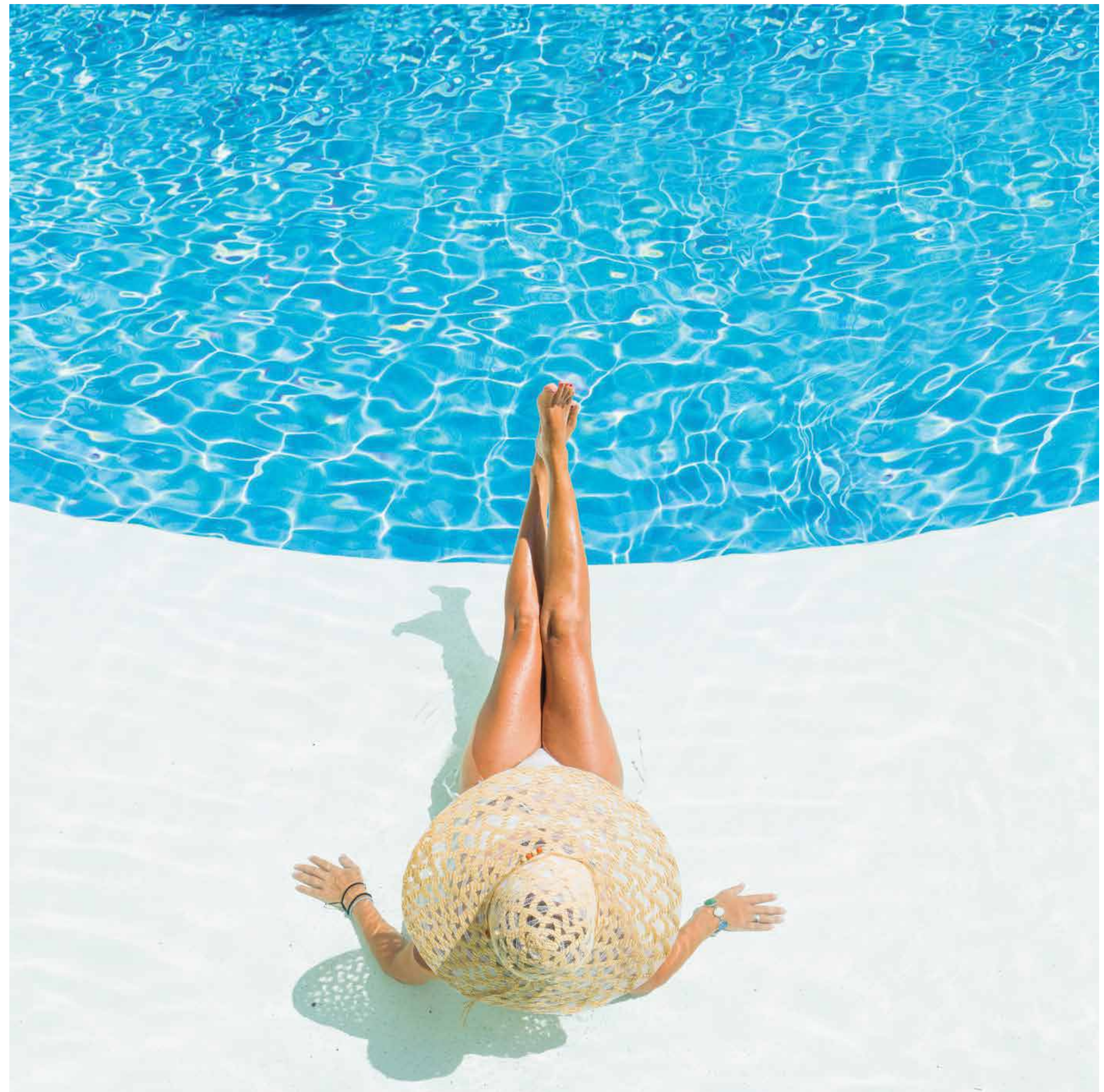






WYNWOOD  
**THE FEELING  
OF INFINITY**

Bathe in the pure bliss of the infinity pool, where the sky melts into the sea and the ocean surrounds you in a silent embrace, a parable of calm that sculpts your life.







WYNNWOOD  
LIMITED







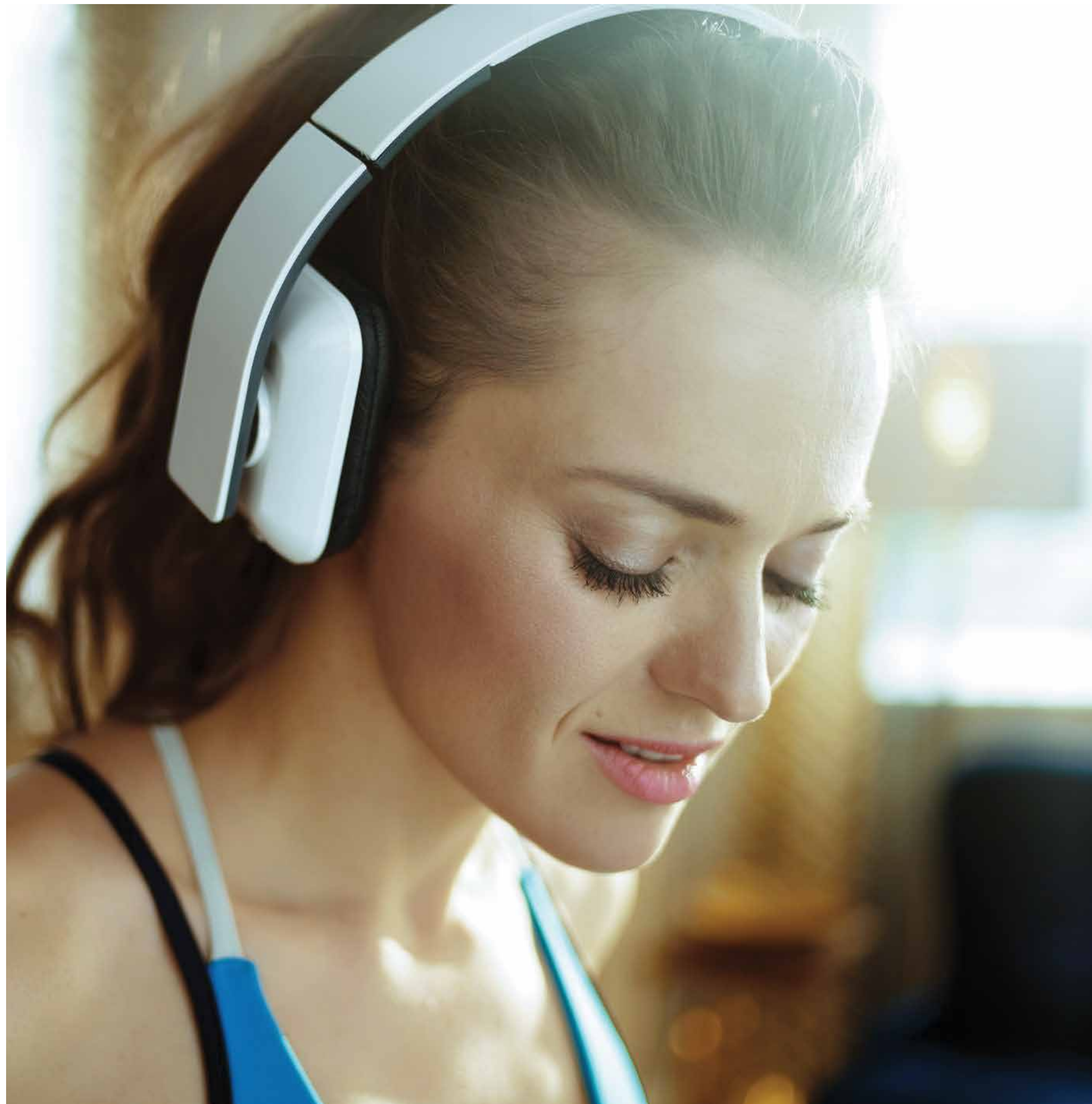




DRIFT IN STILLNESS, BETWEEN  
THE OCEAN AND INFINITY, AND  
NOTHING ELSE







WYNWOOD

## AWAKENING THE BODY. QUIETING THE MIND.

A fully equipped, world-class gym rests on the podium, surrounded by calm and clarity, where strength meets serenity in every step, stretch, and breath.







WYNWOOD | MITJAZ







WYNWOOD | MITIAZ







WYNWOOD SPORTS







WYNWOOD  
**THE SOCIAL  
HEARTBEAT**

The clubhouse is Wynwood Residence's quiet heart, enclosed in lush greenery. It is a place to host, reflect, or simply be.





WYNWOOD JIMTIAZ















## INTERIORS

### WYNWOOD RESIDENCE

“Luxury is not added. It’s ingrained.”

- Custom-designed kitchens fitted with MIELE appliances — where precision meets everyday elegance.
- Sanitary fittings by GESSI, GEBERIT, and VILLEROY & BOCH — a statement of performance, design, and comfort.
  - ALEXA — enabled smart controls for effortless, voice-activated living that adapts to your rhythm.
  - Fully furnished residences with bespoke wardrobes, refined finishes, and natural textures throughout.
- Seamless integration of ambient lighting and sculpted ceiling profiles — balancing warmth, stillness, and clarity.
  - Engineered stone countertops and minimalist cabinetry — crafted for quiet luxury.
  - Natural materials curated for tactile softness and timeless beauty.

All residences are delivered fully furnished, with thoughtfully layered palettes and premium brand selections throughout. Each element is fitted to express both form and function.

**Miele**

**GESSI**<sup>®</sup>

  
**Villeroy & Boch**  
1748

**■ GEBERIT**

**alex**a  






## ELEGANCE CAPTURED BY THE WINDOW

Each residence at Wynwood is shaped with intention, where light flows freely, proportions are balanced, and every detail is considered. From 1 to 3-bedroom homes, this curated collection offers a quiet elegance that lives in the texture of materials, the rhythm of space, and the stillness surrounding it. Designed not to impress, but to endure.





WYNWOOD | IMTIAZ









WYNWOOD | IMTIAZ



IMTIAZ  
DEVELOPMENTS





















WYNWOOD | IMITIAZ













THE SIGNATURE  
DUPLEXES







## ENDLESS VIEWS. EFFORTLESS CALM.

The Signature Duplexes crown Wynwood Residence with a quiet confidence, where light moves without interruption and every line is drawn with purpose. Here, space is not measured in square feet, but in silence, clarity, and elevation. Private pools, open-sky terraces, and panoramic views converge in a home that doesn't just rise above, but redefines what it means to reside.















WYNWOOD | IMTIAZ











WYNNWOOD  
JIMTIAZ



Kitchen & Dining









WYNNWOOD | IMTIAZ

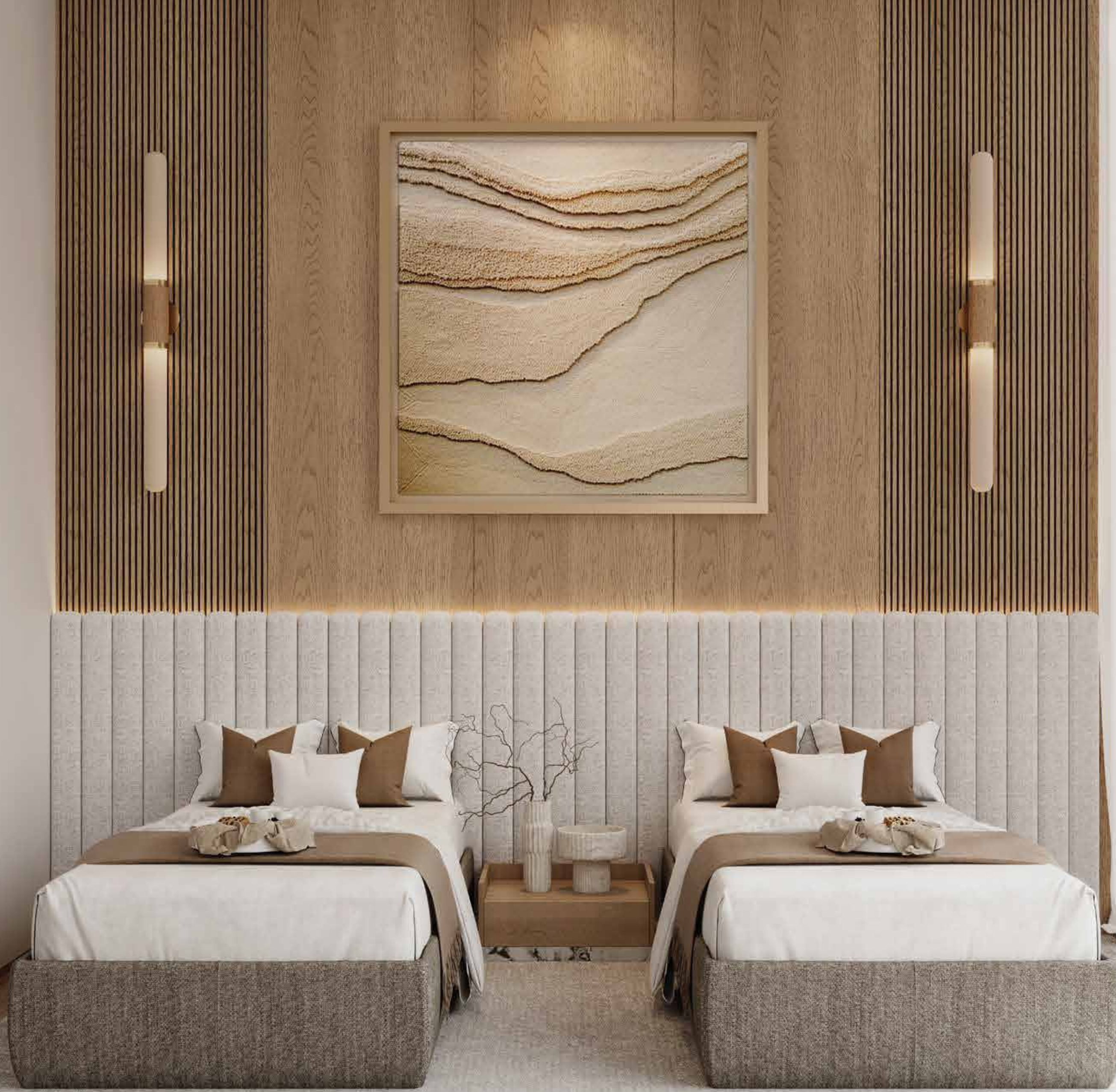




























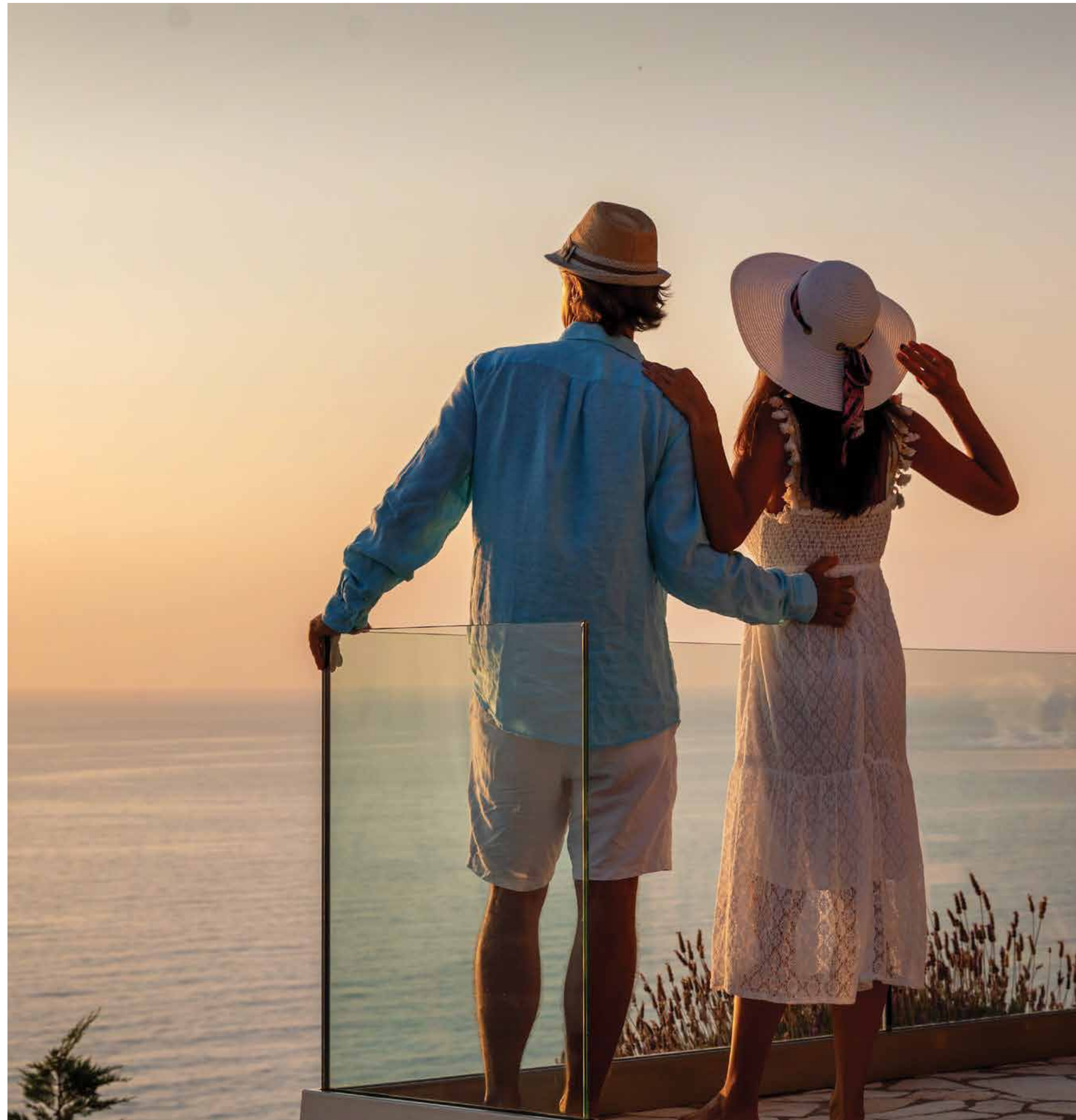
VIII

EXCLUSIVE PRIVILEGES WITHIN  
THE DUPLEX









OUTDOOR SITTING AREA  
**THE HORIZON  
LOUNGE**

A space where the breeze lingers, and time slows. Surrounded by views, this open-air haven invites morning rituals and twilight reflections.





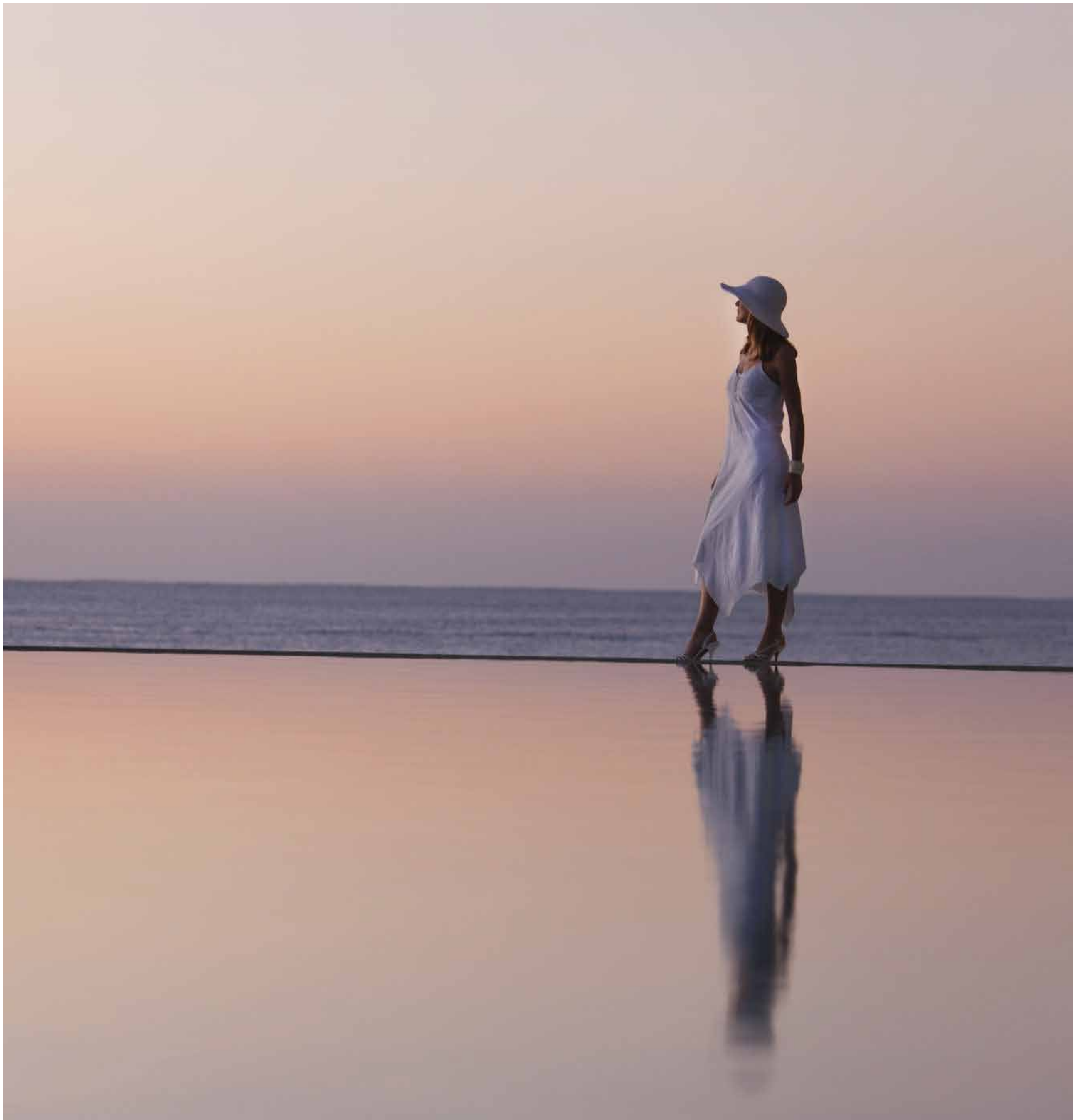


BBQ AREA  
**THE FLAME  
GARDEN**

Crafted for connection, the BBQ space is where flame meets flavour, set against a skyline backdrop, designed for evenings that last longer.







PRIVATE INFINITY POOL  
**THE INFINITY  
MIRAGE**

More than water, it's a mirror to the sky. Suspended in stillness, your pool becomes the quietest luxury of all.

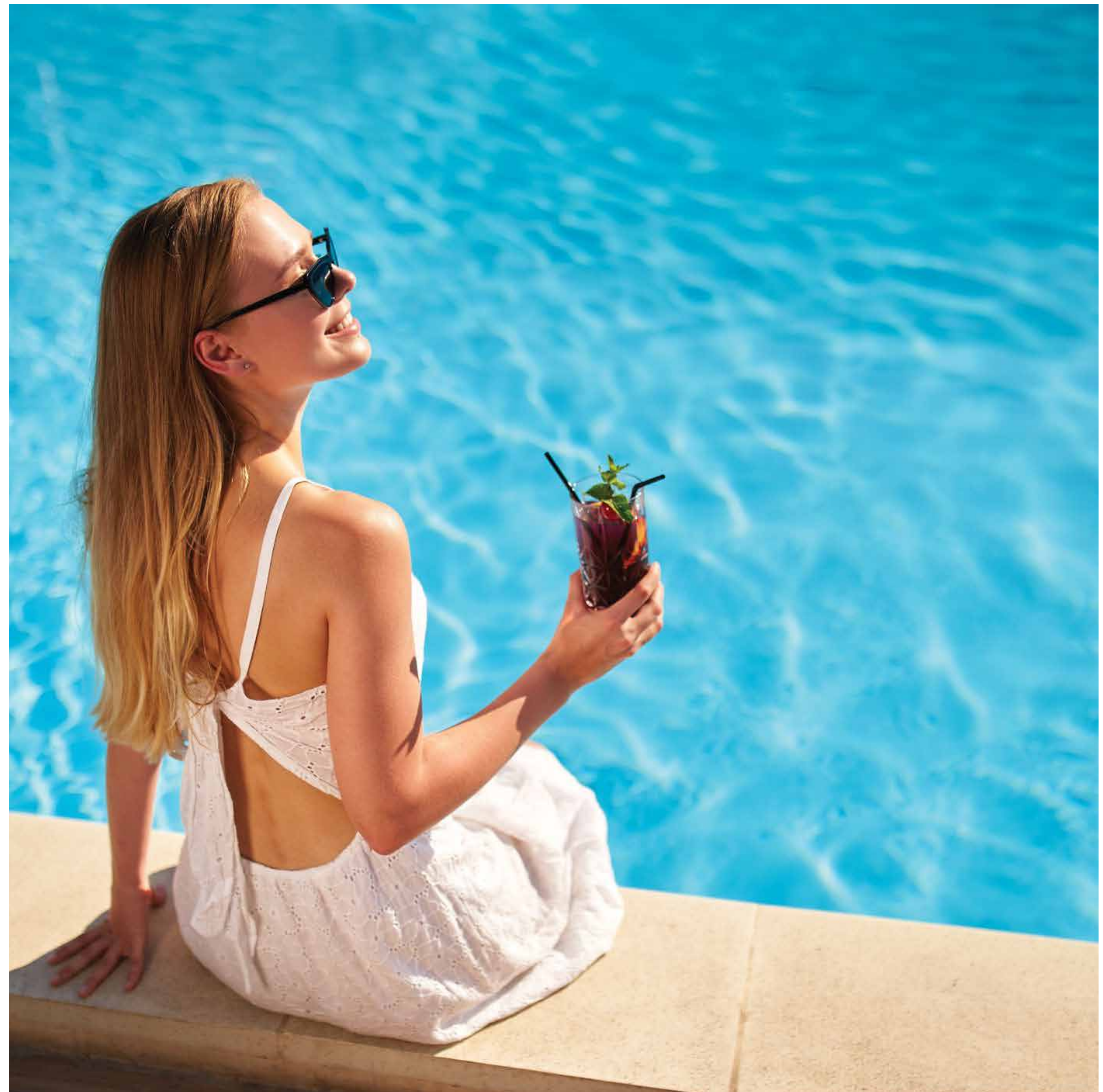




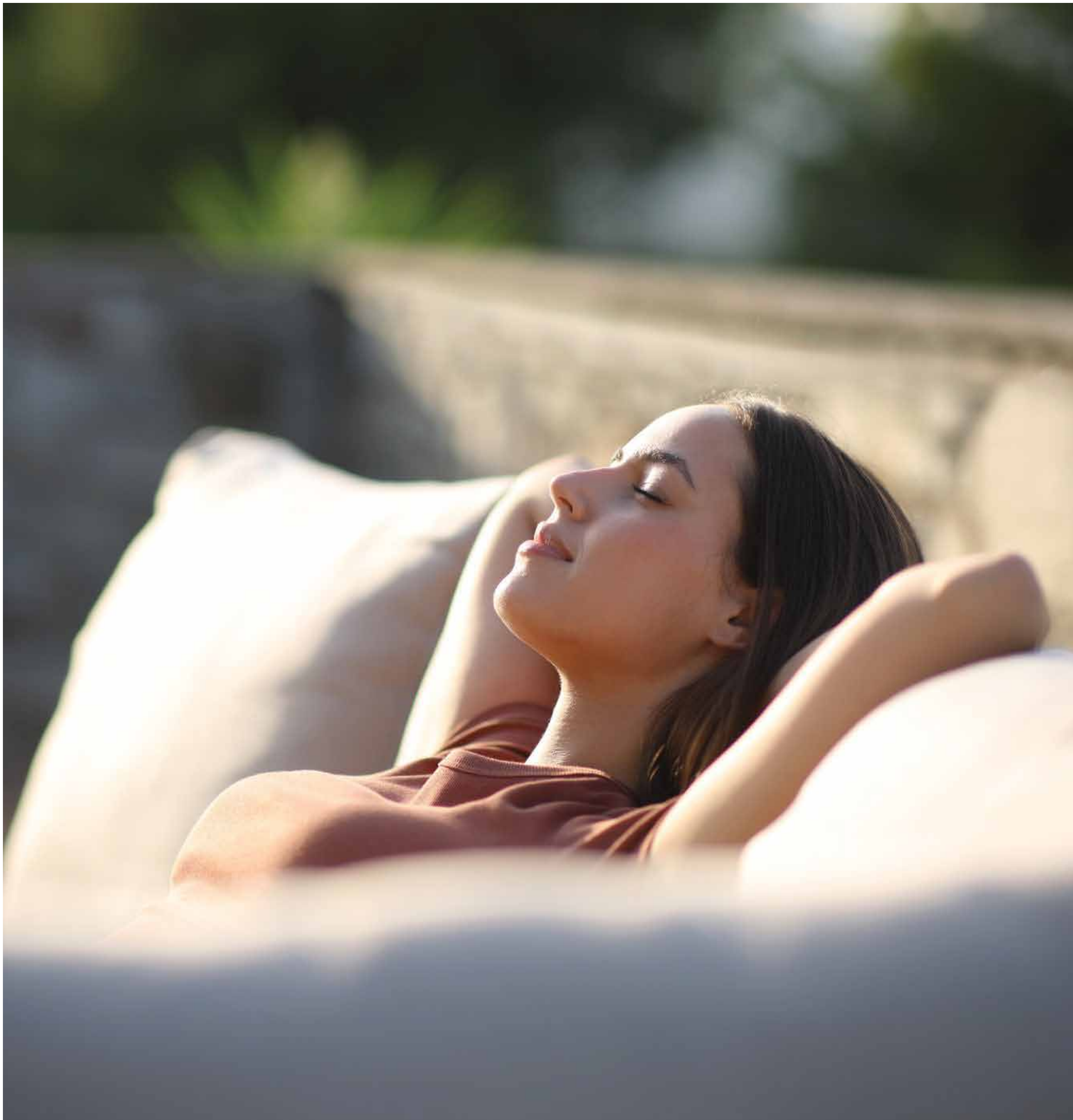


POOLSIDE BAR  
**THE SKY BAR**

A toast to the horizon. This elevated bar blends effortless hospitality with panoramic views. It is private, poised, and always ready.







FLORA AND FAUNA  
**THE GARDEN  
DRIFT**

Nature, curated. Greenery softens the edges of stone and sky, bringing the outside in without compromise.







POOLSIDE DECK

## THE SOLSTICE DECK

A sun-warmed platform where conversations unfold  
and the day drifts by. Perfectly placed, perfectly paced.





# IMTIAZ

DEVELOPMENTS

A JOURNEY TO PERFECTION

[imtiaz.ae](http://imtiaz.ae) | [info@imtiaz.ae](mailto:info@imtiaz.ae)

800 IMTIAZ (468429)