



RAMADA RESIDENCES ~ By Lincoln





Where Design Meets Distinction

A G+6 branded apartments in Dubai South, Ramada Residences By Lincoln blends modern design with exclusive amenities for a lifestyle of comfort and elegance

WYNDHAM

HOTELS & RESORTS

WYNDHAM GLOBAL

HOSPITALITY LEADER

Wyndham Hotels & Resorts is the world's largest hotel franchising company, with a portfolio of trusted brands across more than 95 countries. Renowned for its commitment to quality, value, and exceptional guest experiences, Wyndham offers a diverse range of accommodations that cater to both

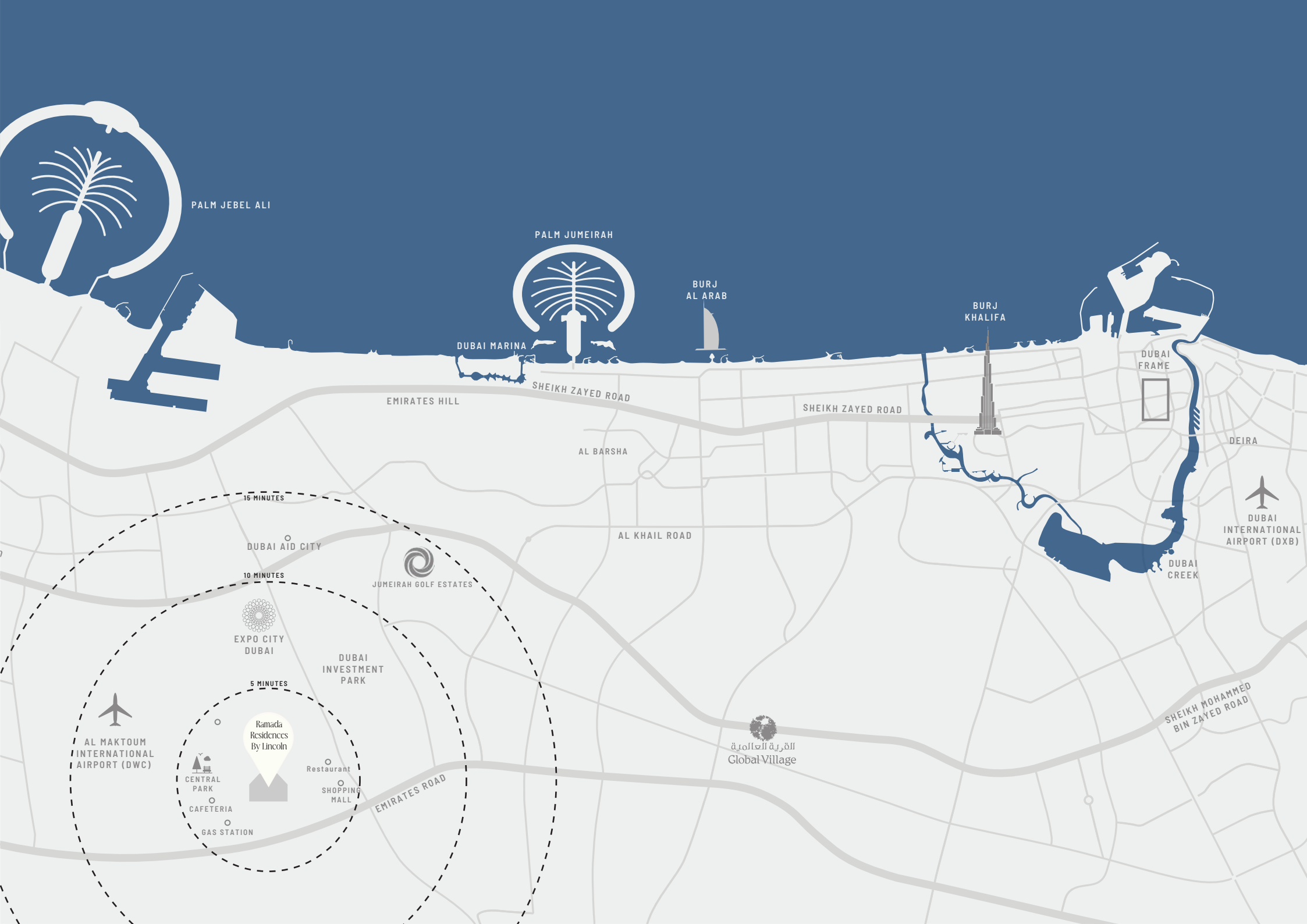
RAMADA®

RAMADA Trusted

Comfort Worldwide

Ramada, part of the renowned Wyndham Hotels & Resorts portfolio, is a globally trusted hospitality brand known for delivering comfort, convenience, and exceptional service. With five distinctive properties across Dubai—Downtown Dubai, JBR, Deira, Plaza Deira, and Barsha Heights—Ramada offers thoughtfully designed accommodations and modern amenities to create memorable stays for both leisure and business travelers.





PALM JEBEL ALI

PALM JUMEIRAH

DUBAI MARINA

BURJ
AL ARAB

BURJ
KHALIFA

DUBAI
FRAME

DEIRA

DUBAI
INTERNATIONAL
AIRPORT (DXB)

DUBAI
CREEK

SHEIKH MOHAMMED
BIN ZAYED ROAD

Global Village

SHEIKH ZAYED ROAD

SHEIKH ZAYED ROAD

EMIRATES HILL

AL BARSHA

AL KHAIL ROAD

15 MINUTES

DUBAI CITY

10 MINUTES

EXPO CITY
DUBAI

DUBAI
INVESTMENT
PARK

5 MINUTES

Ramada
Residences
By Lincoln

AL MAKTOUM
INTERNATIONAL
AIRPORT (DWC)

CENTRAL
PARK
CAFETERIA
GAS STATION

Restaurant
SHOPPING
MALL

EMIRATES ROAD



Closer Than You Think

From Ramada Residences By Lincoln



In Front Of Project

Community Park



Behind Of Project

Shopping & Retail



Within the Community

Healthcare Facilities



Within the Community

Educational Institutions



10 Minutes

Expo City



15 Minutes

Al Maktoum International Airport



15 Minutes

Dubai Parks & Resorts



25 Minutes

Burj Khalifa



30 Minutes

Palm Jebel Ali



30 Minutes

Burj Al Arab



30 Minutes

Dubai Marina



35 Minutes

Palm Jumeirah

Seamlessly Connected To Dubai's Metro Future

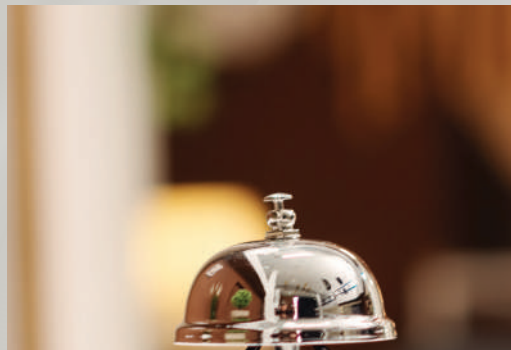
Seamless access to Dubai Metro
(Blue & Red Lines), Etihad Rail,
and major highways connects
you to every corner of the UAE



Where Every Road Leads To You

Effortless access to E611,
Sheikh Zayed Road,
Mohamed Bin Zayed
Road, and Expo Road
ensures you're always
close to the city's pulse





More Than a Residence – A Lifestyle

From the moment you arrive, every service reflects the elegance of a luxury stay. Gourmet in-residence dining, white-glove valet, concierge assistance, and personalized touches create a living experience that's seamless, stylish, and deeply personal

This is branded living, redefined. Where you don't just own a space — you inherit a lifestyle



Luxury Flows Beyond Limits

+20 Luxury Amenities

Live Actively. Be Pampered



Concierge



Bellhop



Valet



In-Room Dining



Airport Shuttle



24H Reception



Travel Desk



High Speed
Wi-Fi



Co-Working
Lounge



+20 Luxury Amenities

Where calm meets connection



Sky Pool



Jacuzzi



Sauna



Halo-Therapy
Room



Open Activity
Area



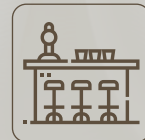
Meditation
Zone



BBQ Area



Club Lounge



Sky Lounge



Kids Playroom



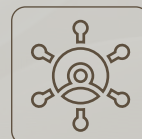
Gym



Jogging Track



Sports Court



Multipurpose
Area



EV Charging







Premium Comfort. Always Within Reach

Enjoy hotel-style living with premium services designed for your comfort — from concierge and valet to in-room dining and on-call care



Maintenance On-Demand



Laundry On Call



Housekeeping



Chauffeur On Call



Doctor On Call



Salon On Call



Where Love Meets
Fine Living











Floor Plans

Ground Floor Plan



Floor Plans

Typical Floor Plan



Floor Plans

Rooftop Plan



Units Layout

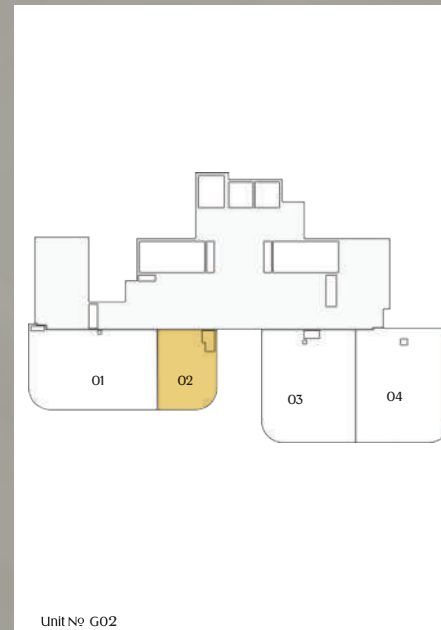
Studio – Ground Floor

Type - A - Premium



Size:

40.64 SQ.M | 437.48 SQ.FT



Units Layout

Studio – Typical Floor

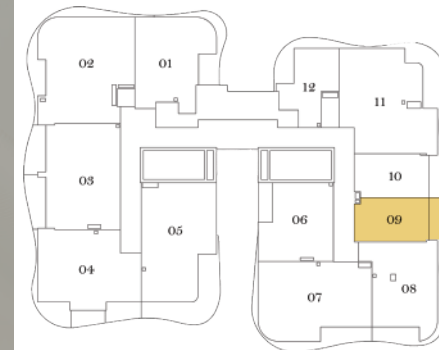
1st Floor - 6th Floor

Type - B -



Size:

38.65 SQ.M | 415.88 SQ.FT



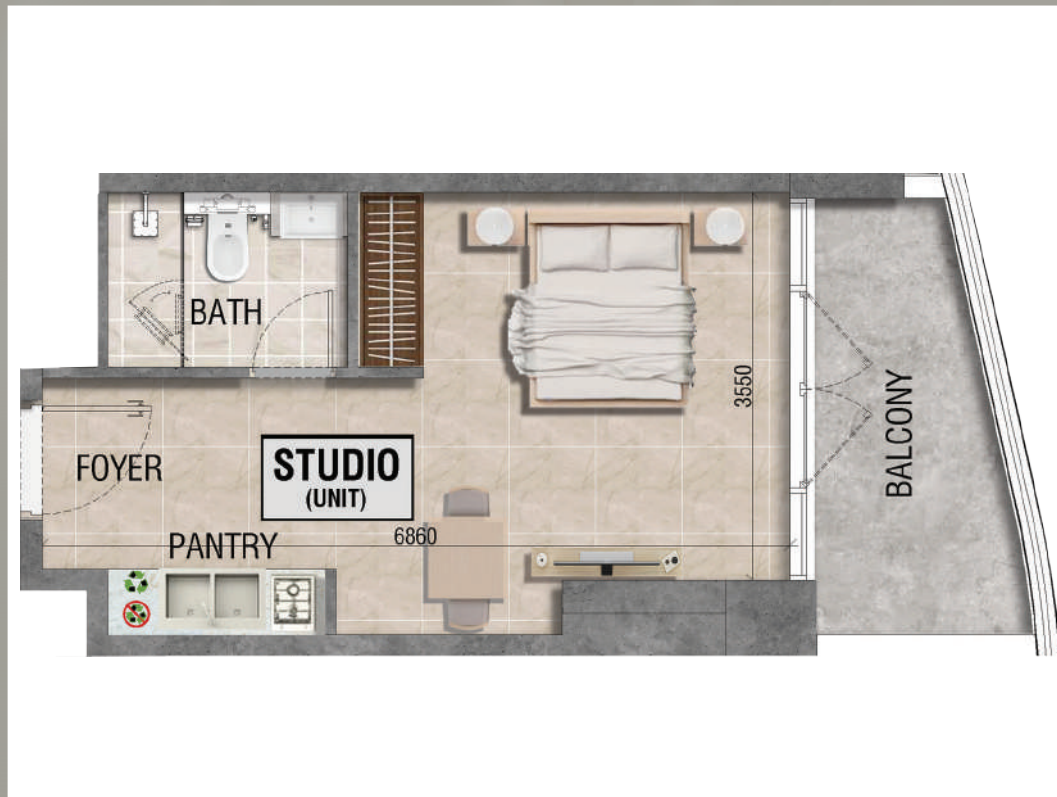
Unit No 109 - 209 - 309 - 409 - 509 - 609

Units Layout

Studio – Typical Floor

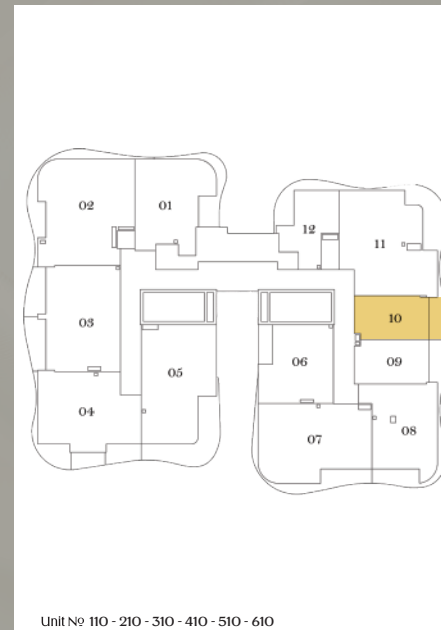
1st Floor - 6th Floor

Type - C -



Size:

37.8 SQ.M | 406.72 SQ.FT



Units Layout

Studio – Typical Floor

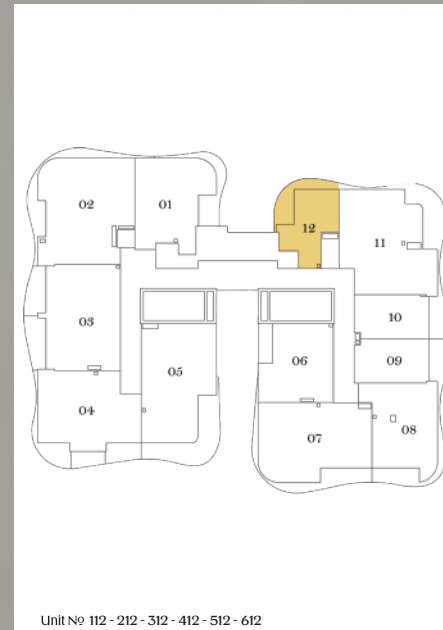
1st Floor – 6th Floor

Type – D –



Size:

41.84 SQ.M | 450.19 SQ.FT



Units Layout

1 Bedroom – Typical Floor

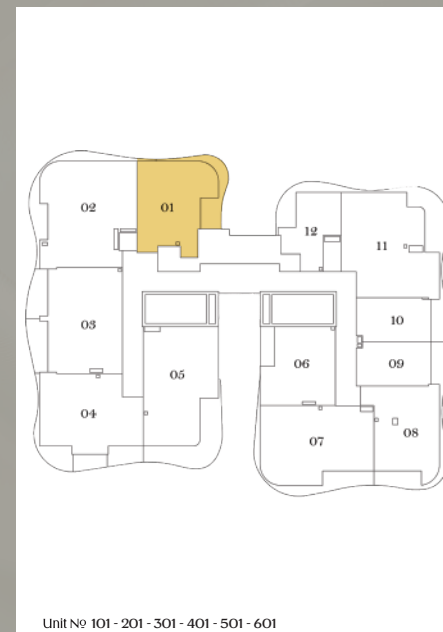
1st Floor - 6th Floor

Type - A -



Size:

70.15 SQ.M | 754.81 SQ.FT



Units Layout

1 Bedroom – Typical Floor

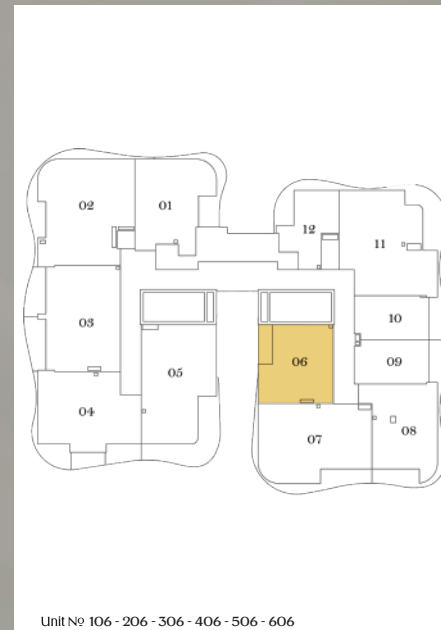
1st Floor - 6th Floor

Type - B -



Size:

54.42 SQ.M | 585.55 SQ.FT



Units Layout

1 Bedroom – Typical Floor

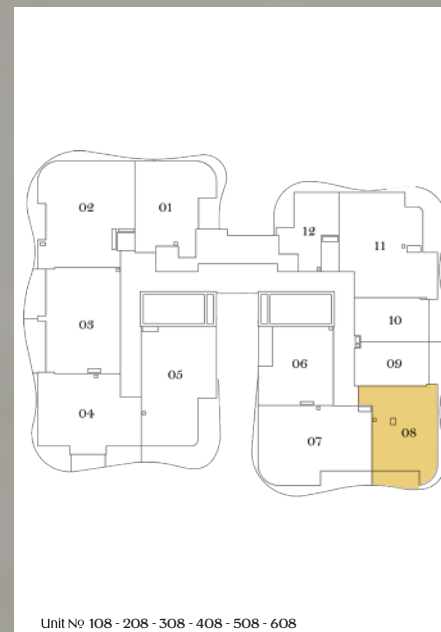
1st Floor - 6th Floor

Type - C -



Size:

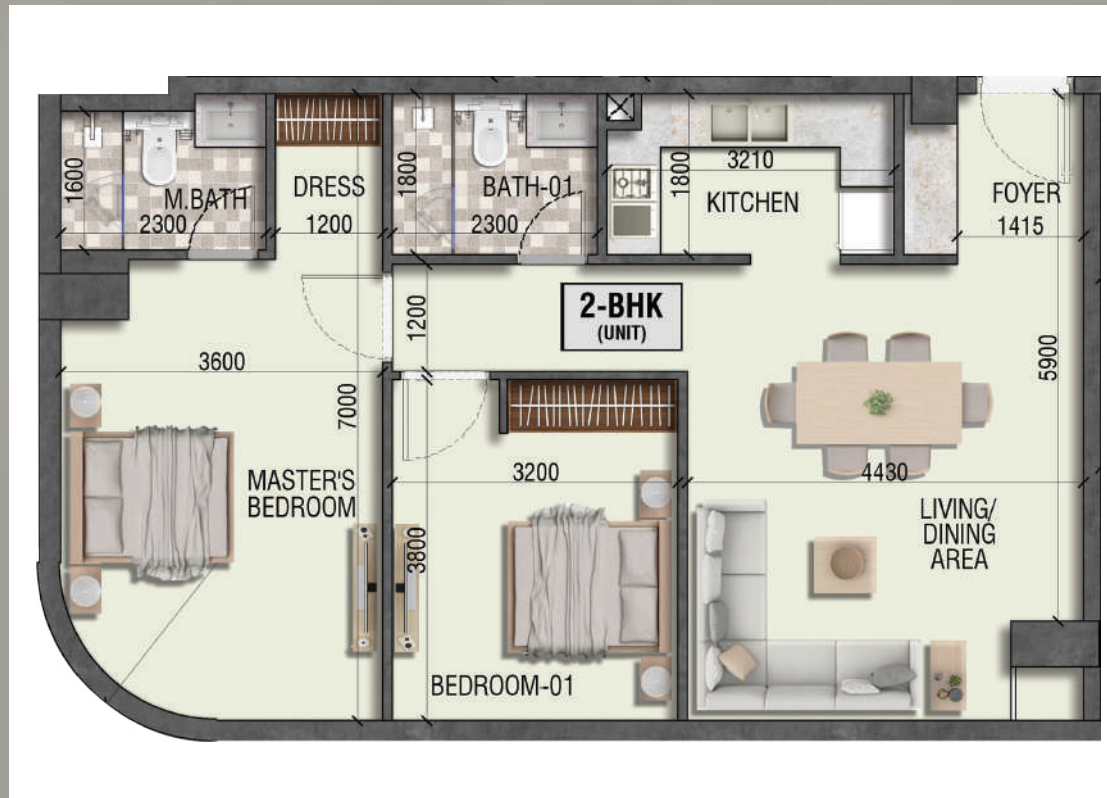
68.15 SQ.M | 701.01 SQ.FT



Units Layout

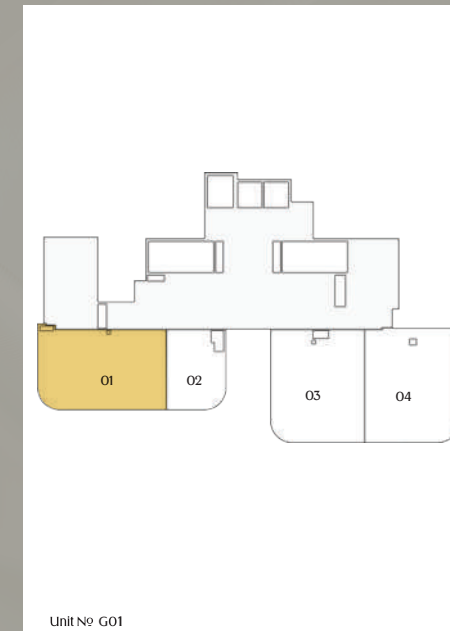
2 Bedroom – Ground Floor

Type - A - Premium



Size:

96.17 SQ.M | 1035.25 SQ.FT



Units Layout

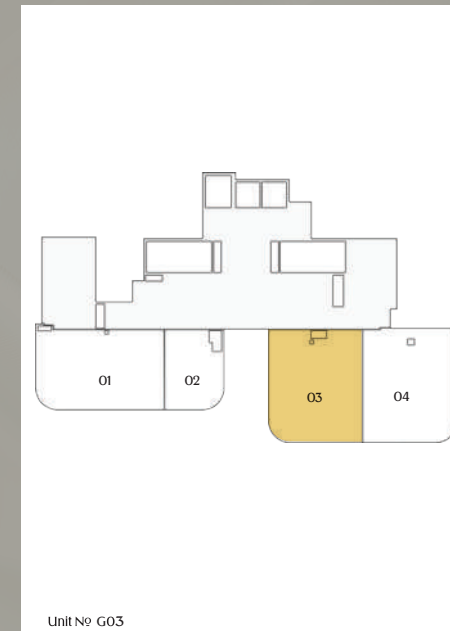
2 Bedroom – Ground Floor

Type - B - Premium



Size:

95.99 SQ.M | 1033.26 SQ.FT



Units Layout

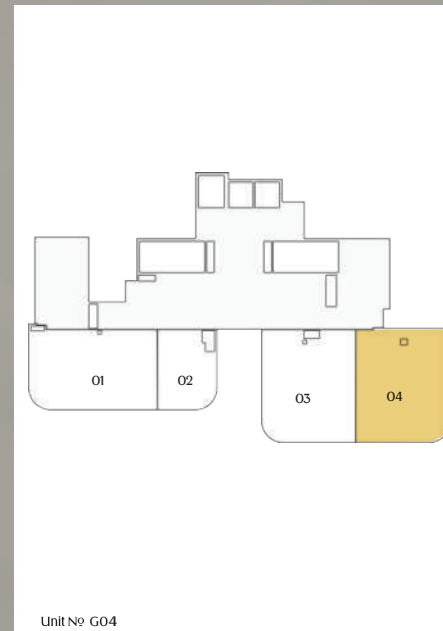
2 Bedroom – Ground Floor

Type - C - Premium



Size:

101.18 SQ.M | 1089.12 SQ.FT



Units Layout

2 Bedroom – Typical Floor

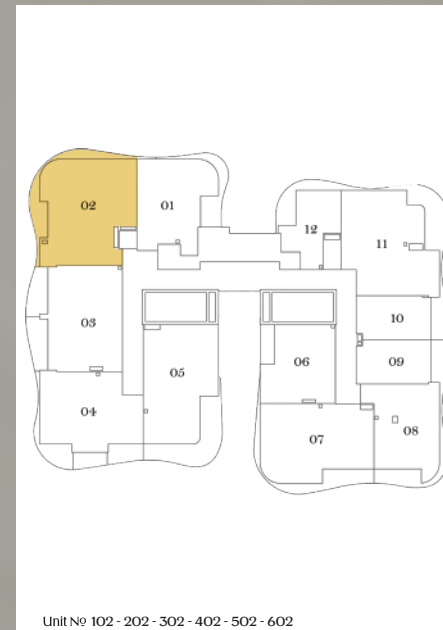
1st Floor - 6th Floor

Type - D -



Size:

100.82 SQ.M | 1084.82 SQ.FT

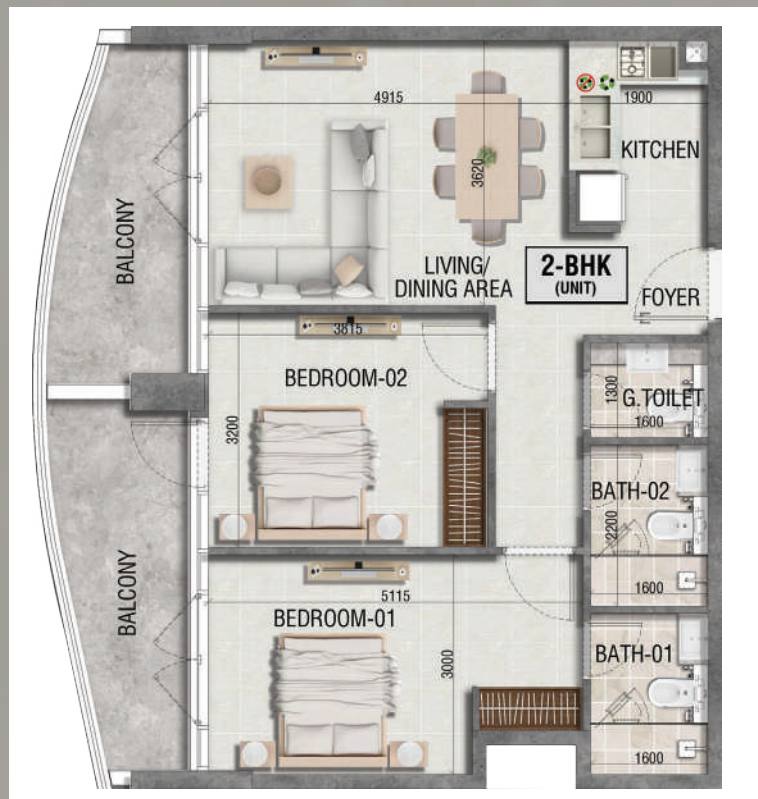


Units Layout

2 Bedroom – Typical Floor

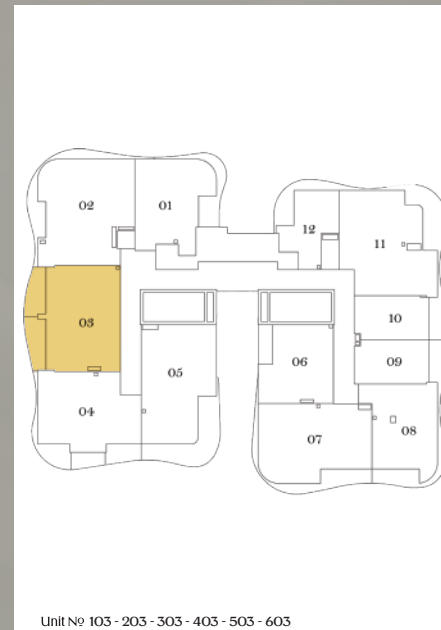
1st Floor - 6th Floor

Type - E -



Size:

90.61 SQ.M | 974.96 SQ.FT

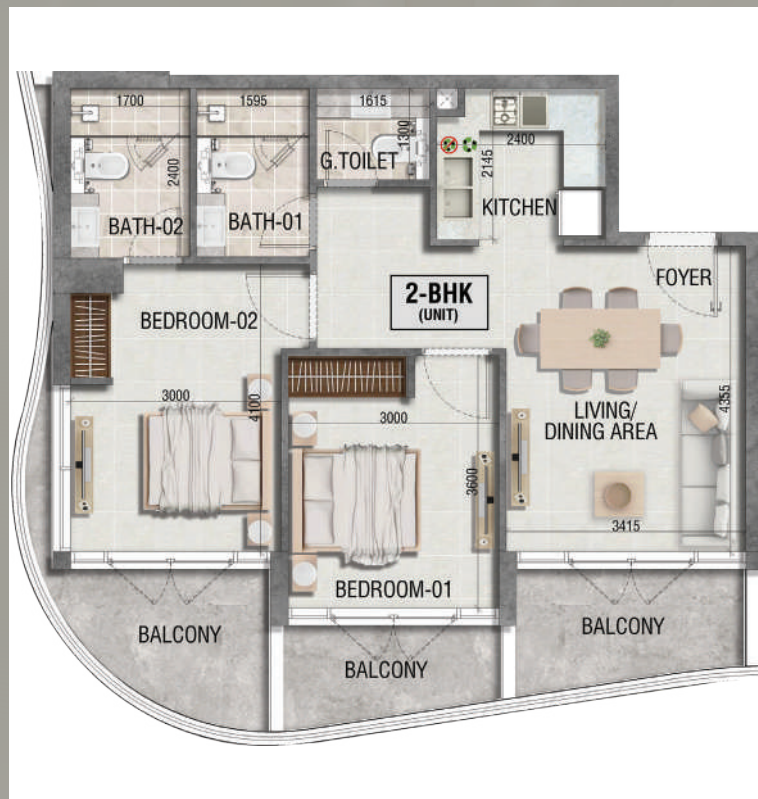


Units Layout

2 Bedroom – Typical Floor

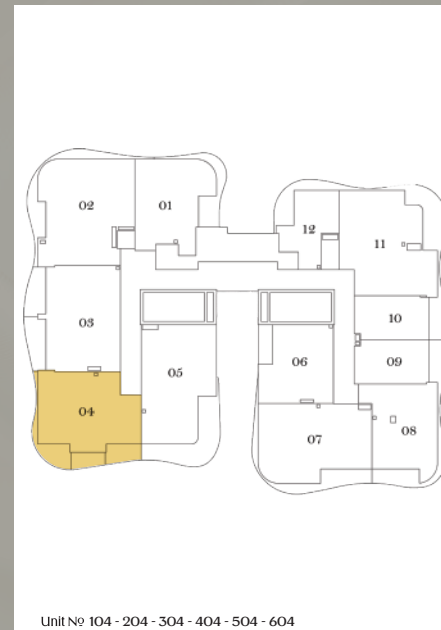
1st Floor - 6th Floor

Type - F -



Size:

87.71 SQ.M | 943.7 SQ.FT



Units Layout

2 Bedroom – Typical Floor

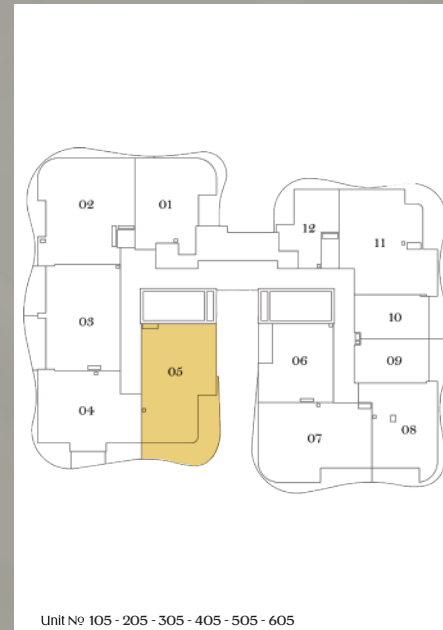
1st Floor - 6th Floor

Type - G -



Size:

97.55 SQ.M | 1049.63 SQ.FT



Units Layout

2 Bedroom – Typical Floor

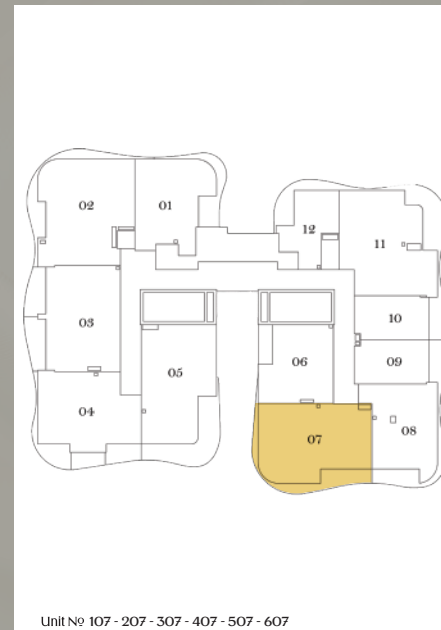
1st Floor - 6th Floor

Type - H -



Size:

91.87 SQ.M | 988.52 SQ.FT



Units Layout

2 Bedroom – Typical Floor

1st Floor - 6th Floor

Type - I -



Size:

98.71 SQ.M | 1062.11 SQ.FT

