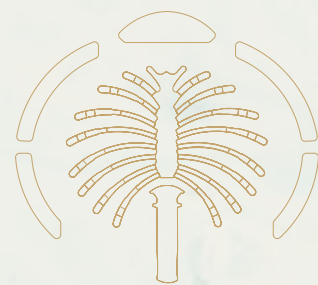


**PALM  
JEBEL ALI**

**NAKHEEL**

A C U R A T E D C O L L E C T I O N

1



T H E  
B E A C H  
V I L L A S

Serenity By The Sea

Beachfront living at its finest  
An iconic neighbourhood  
Introducing the Beach Collection

— P.6  
— P.15  
— P.20

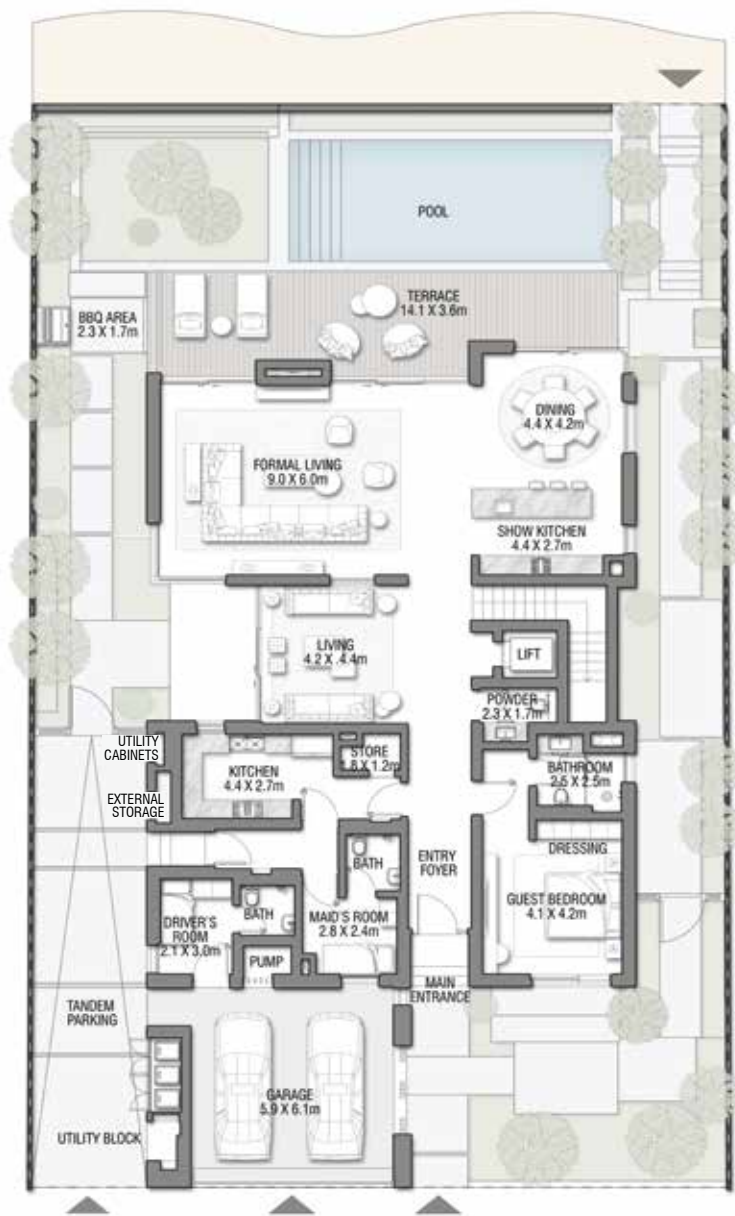


"Maximising the views was critical in designing these luxury villas, best illuminating the spaces utilising natural daylight."

WHITESPACE - ARCHITECT







GROUND FLOOR



SECOND FLOOR



FIRST FLOOR

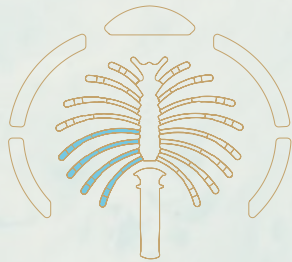
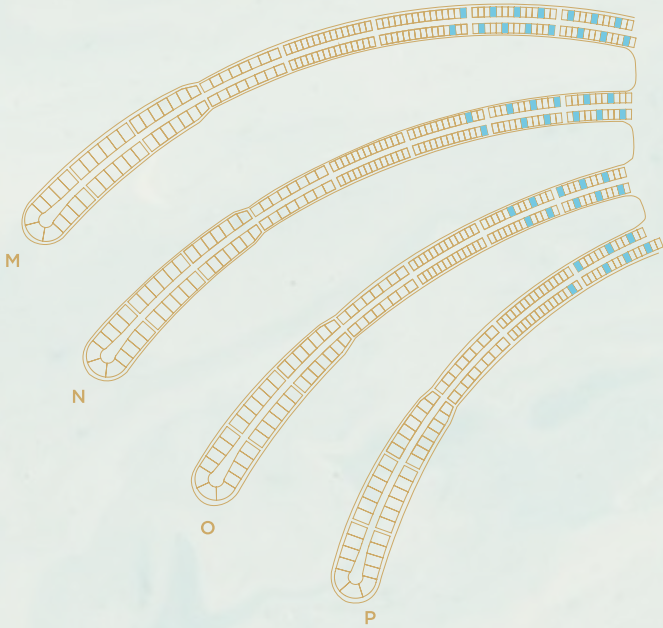
VILLA  
ACQUAMARINA

Beach Villas Collection

G + 2

6 BEDROOMS + FORMAL AND FAMILY LOUNGES  
+ ROOF LOUNGE AND TERRACE

FLOOR TYPE	SQ. M.	SQ. FT.
Ground Floor	245.30	2,640.39
Balcony / Terrace / Porch-GF	4.95	53.28
First Floor Area	229.40	2,469.24
Balcony / Terrace - First Floor	38.07	409.78
Second Floor Area	114.00	1,227.09
Balcony / Terrace - Second Floor	51.59	555.31
Garage - Covered	48.37	520.65
<b>TOTAL BUILT-UP AREA</b>	<b>731.68</b>	<b>7,875.74</b>
Garage with Pergola	0.0	0.0
<b>TOTAL AREA</b>	<b>731.68</b>	<b>7,875.74</b>



Numbers, square footage and floor plans are approximate. Final dimensions, square footage and floor plans may vary and are subject to change without notice. The developer reserves the right to make revisions. Built-Up Area is measured in accordance with Dubai Land Department standards. Plans, artistic renderings, landscaping and images are for illustrative purposes only and are subject to change without notice. Landscape shown is indicative and not provided by the developer. Pool layout and configuration shown on floor plans are for general illustrative purposes only and are not provided by the developer. The Bespoke Edition Option offered to the buyer at additional price will include a standard pool offering.



"The layout is very functional and harmonic, and the indoor spaces merge with the outdoor in a seamless flow. The quality of living is particularly enhanced by the light and connection with nature, with an emphasis on water views from all primary rooms."

LW DESIGN GROUP - ARCHITECT







GROUND FLOOR



SECOND FLOOR



FIRST FLOOR

VILLA  
AZURA BLUE

Beach Villas Collection

G + 2

5 BEDROOMS + FAMILY ROOM  
+ ROOF LOUNGE AND TERRACE

FLOOR TYPE	SQ. M.	SQ. FT.
Ground Floor	258.14	2,778.60
Balcony / Terrace / Porch-GF	2.07	22.28
First Floor Area	246.67	2,655.13
Balcony / Terrace - First Floor	39.94	429.91
Second Floor Area	153.55	1,652.80
Balcony / Terrace - Second Floor	34.60	372.43
Garage - Covered	48.61	523.23
TOTAL BUILT-UP AREA		
Garage with Pergola	0.0	0.0
TOTAL AREA		

Numbers, square footage and floor plans are approximate. Final dimensions, square footage and floor plans may vary and are subject to change without notice. The developer reserves the right to make revisions. Built-Up Area is measured in accordance with Dubai Land Department standards. Plans, artistic renderings, landscaping and images are for illustrative purposes only and are subject to change without notice. Landscape shown is indicative and not provided by the developer. Pool layout and configuration shown on floor plans are for general illustrative purposes only and are not provided by the developer. The Bespoke Edition Option offered to the buyer at additional price will include a standard pool offering.

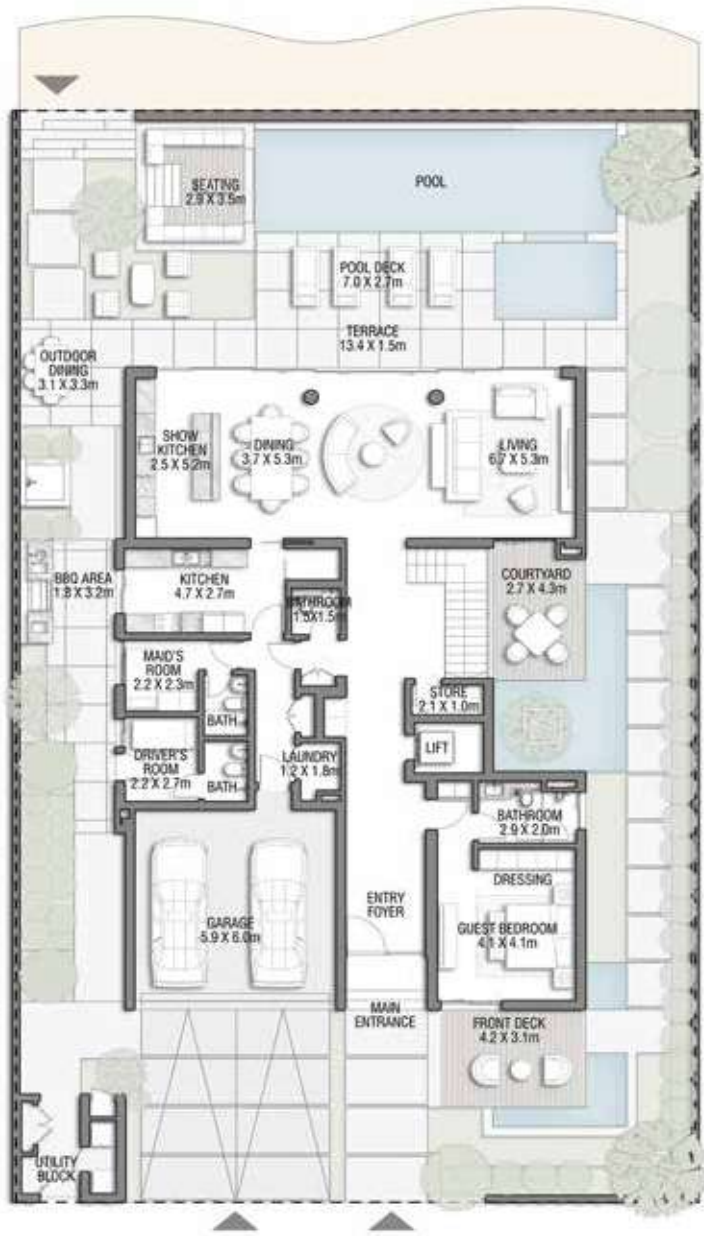


“The architecture had to be designed in a way to both provide a sense of luxury and create a comfortable, relaxing lifestyle”.

NAGA – ARCHITECT







GROUND FLOOR



SECOND FLOOR



FIRST FLOOR

VILLA  
BLUE  
HORIZON

Beach Villas Collection

G + 2

6 BEDROOMS + FAMILY ROOM  
+ ROOF LOUNGE AND TERRACE

FLOOR TYPE	SQ. M.	SQ. FT.
Ground Floor	206.74	2,225.33
Balcony / Terrace / Porch-GF	4.08	43.92
First Floor Area	244.64	2,633.28
Balcony / Terrace - First Floor	17.67	190.20
Second Floor Area	116.18	1,250.55
Balcony / Terrace - Second Floor	50.08	539.06
Garage - Covered	40.29	433.68
TOTAL BUILT-UP AREA		
Garage with Pergola	0.0	0.0
TOTAL AREA		

Numbers, square footage and floor plans are approximate. Final dimensions, square footage and floor plans may vary and are subject to change without notice. The developer reserves the right to make revisions. Built-Up Area is measured in accordance with Dubai Land Department standards. Plans, artistic renderings, landscaping and images are for illustrative purposes only and are subject to change without notice. Landscape shown is indicative and not provided by the developer. Pool layout and configuration shown on floor plans are for general illustrative purposes only and are not provided by the developer. The Bespoke Edition Option offered to the buyer at additional price will include a standard pool offering.

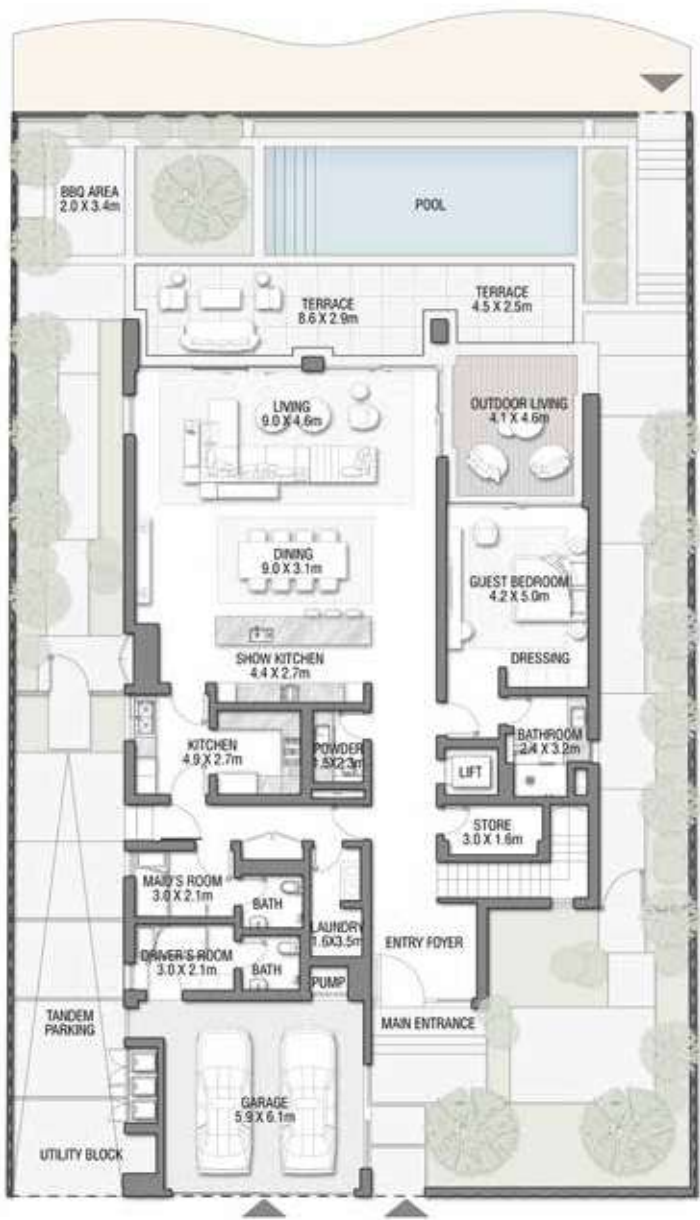


“The dream living destination, where sun, beach,  
sea, and community are all in one.”

WHITESPACE – ARCHITECT







GROUND FLOOR



SECOND FLOOR



FIRST FLOOR

VILLA

INDIGO  
OCEAN

Beach Villas Collection

G + 2

5 BEDROOMS + FAMILY ROOM  
+ ROOF LOUNGE AND TERRACE

FLOOR TYPE	SQ. M.	SQ. FT.
Ground Floor	247.74	2,666.65
Balcony / Terrace / Porch-GF	16.23	174.70
First Floor Area	227.13	2,444.81
Balcony / Terrace – First Floor	43.22	465.22
Second Floor Area	114.85	1,236.24
Balcony / Terrace – Second Floor	37.33	401.82
Garage – Covered	45.82	493.20
TOTAL BUILT-UP AREA		
Garage with Pergola	0.0	0.0
TOTAL AREA		

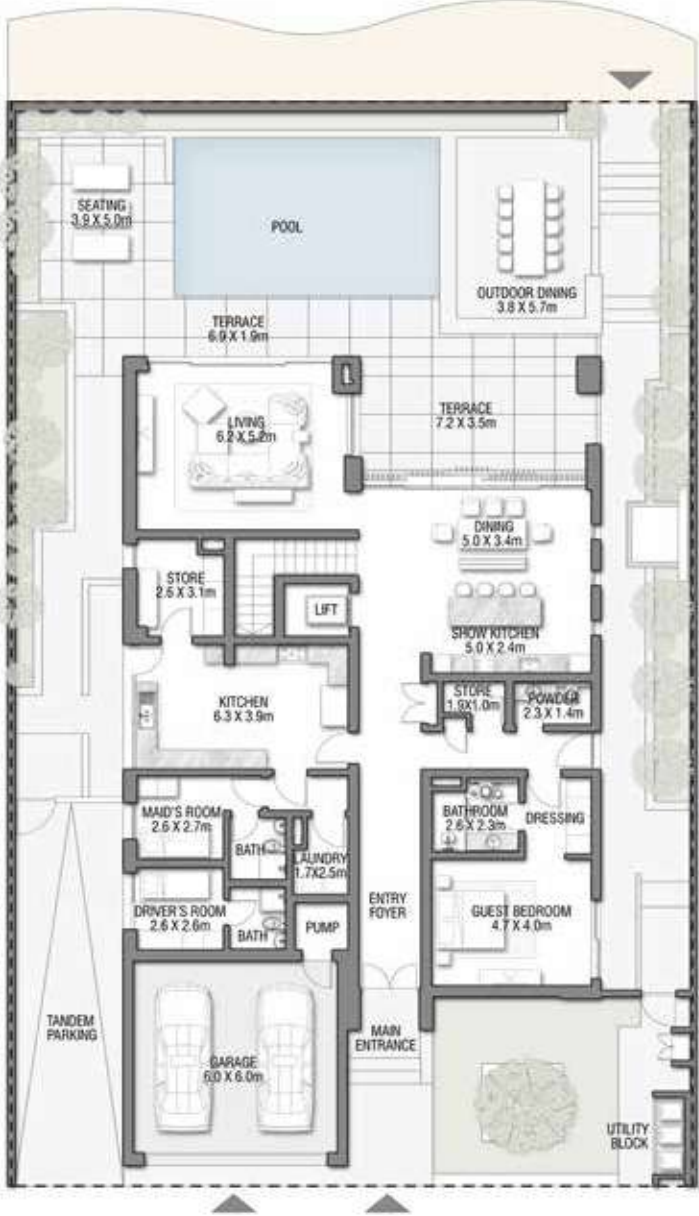
Numbers, square footage and floor plans are approximate. Final dimensions, square footage and floor plans may vary and are subject to change without notice. The developer reserves the right to make revisions. Built-Up Area is measured in accordance with Dubai Land Department standards. Plans, artistic renderings, landscaping and images are for illustrative purposes only and are subject to change without notice. Landscape shown is indicative and not provided by the developer. Pool layout and configuration shown on floor plans are for general illustrative purposes only and are not provided by the developer. The Bespoke Edition Option offered to the buyer at additional price will include a standard pool offering.



Spend peaceful evenings unwinding on the outdoor terrace under the stars. This is a dream home that blends sophisticated style with relaxed beachfront living.







GROUND FLOOR



SECOND FLOOR



FIRST FLOOR

VILLA  
MEDITERRANEAN

Beach Villas Collection

G + 2

5 BEDROOMS + FAMILY ROOM  
+ ROOF LOUNGE AND TERRACE

FLOOR TYPE	SQ. M.	SQ. FT.
Ground Floor	239.47	2,577.63
Balcony / Terrace / Porch-GF	0.0	0.0
First Floor Area	237.56	2,557.07
Balcony / Terrace - First Floor	18.08	194.61
Second Floor Area	136.07	1,464.65
Balcony / Terrace - Second Floor	82.83	891.57
Garage - Covered	44.60	480.07
TOTAL BUILT-UP AREA		
Garage with Pergola	0.0	0.0
TOTAL AREA		

Numbers, square footage and floor plans are approximate. Final dimensions, square footage and floor plans may vary and are subject to change without notice. The developer reserves the right to make revisions. Built-Up Area is measured in accordance with Dubai Land Department standards. Plans, artistic renderings, landscaping and images are for illustrative purposes only and are subject to change without notice. Landscape shown is indicative and not provided by the developer. Pool layout and configuration shown on floor plans are for general illustrative purposes only and are not provided by the developer. The Bespoke Edition Option offered to the buyer at additional price will include a standard pool offering.









GROUND FLOOR



FIRST FLOOR

VILLA  
PROVINCE

Beach Villas Collection

G + 2

5 BEDROOMS + FAMILY ROOM  
+ ROOF LOUNGE AND TERRACE

FLOOR TYPE	SQ. M.	SQ. FT.
Ground Floor	260.96	2,808.95
Balcony / Terrace / Porch-GF	0.0	0.0
First Floor Area	236.54	2,546.10
Balcony / Terrace – First Floor	44.72	481.36
Second Floor Area	133.16	1,433.32
Balcony / Terrace – Second Floor	49.58	533.67
Garage – Covered	48.17	518.50
TOTAL BUILT-UP AREA		
Garage with Pergola	0.0	0.0
TOTAL AREA		

Numbers, square footage and floor plans are approximate. Final dimensions, square footage and floor plans may vary and are subject to change without notice. The developer reserves the right to make revisions. Built-Up Area is measured in accordance with Dubai Land Department standards. Plans, artistic renderings, landscaping and images are for illustrative purposes only and are subject to change without notice. Landscape shown is indicative and not provided by the developer. Pool layout and configuration shown on floor plans are for general illustrative purposes only and are not provided by the developer. The Bespoke Edition Option offered to the buyer at additional price will include a standard pool offering.



“The creation of a vibrant composition between vertical screens and accentuated horizontal slab edges gives the villa its unique feel.”

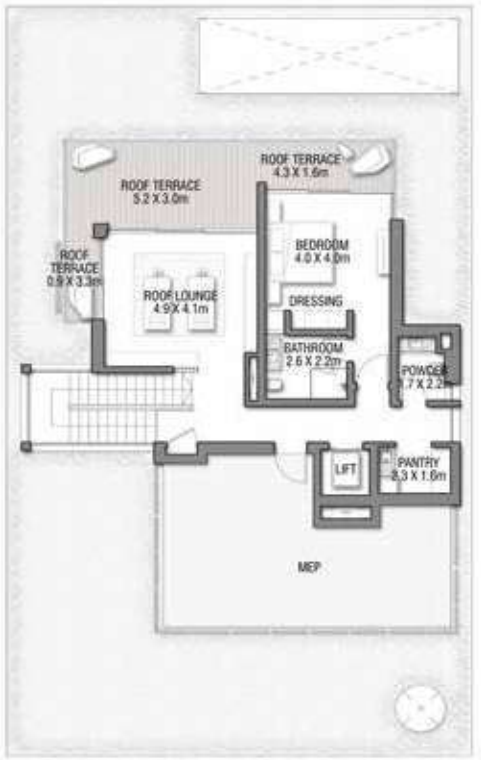
SAOTA - ARCHITECT



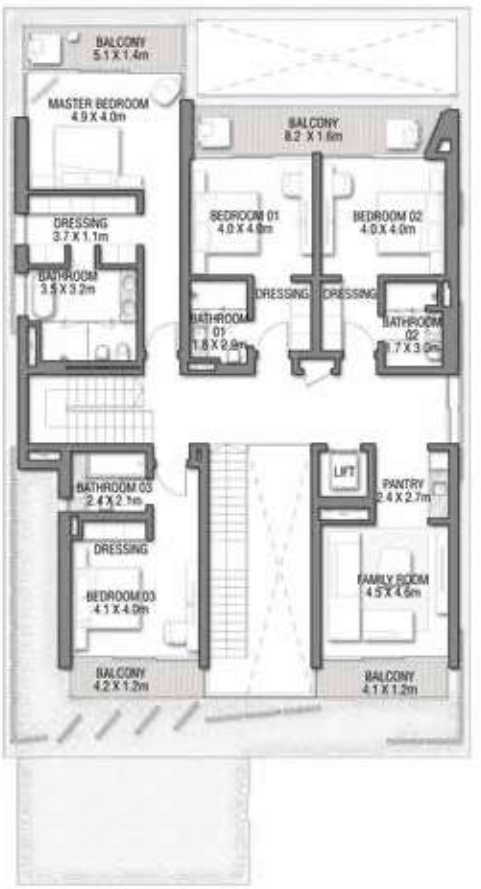




GROUND FLOOR



SECOND FLOOR



FIRST FLOOR

VILLA  
SAPPHIRE

Beach Villas Collection

G + 2

6 BEDROOMS + FAMILY ROOM + STUDY  
+ ROOF LOUNGE AND TERRACE

FLOOR TYPE	SQ. M.	SQ. FT.
Ground Floor	266.94	2,873.32
Balcony / Terrace / Porch-GF	0.0	0.0
First Floor Area	233.49	2,513.27
Balcony / Terrace - First Floor	35.11	377.92
Second Floor Area	104.46	1,124.40
Balcony / Terrace - Second Floor	29.63	318.93
Garage - Covered	48.29	519.79
TOTAL BUILT-UP AREA		
Garage with Pergola	0.0	0.0
TOTAL AREA		

Numbers, square footage and floor plans are approximate. Final dimensions, square footage and floor plans may vary and are subject to change without notice. The developer reserves the right to make revisions. Built-Up Area is measured in accordance with Dubai Land Department standards. Plans, artistic renderings, landscaping and images are for illustrative purposes only and are subject to change without notice. Landscape shown is indicative and not provided by the developer. Pool layout and configuration shown on floor plans are for general illustrative purposes only and are not provided by the developer. The Bespoke Edition Option offered to the buyer at additional price will include a standard pool offering.



“The materiality of the villa is natural and locally adapted. The emphasis is on the creation of an impressive panoramic horizontal quality, focusing interior spaces towards the sea views from each level.”

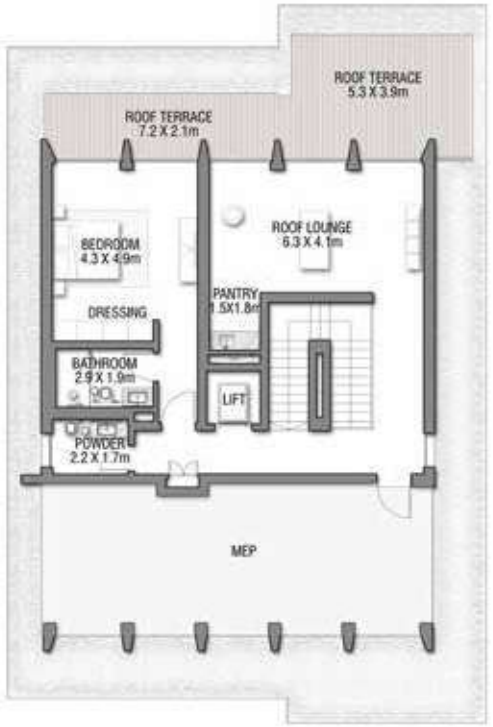
LOCI – ARCHITECT







GROUND FLOOR



SECOND FLOOR



FIRST FLOOR

VILLA  
TROPICAL  
MIST

Beach Villas Collection

G + 2

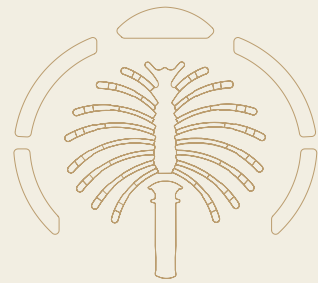
6 BEDROOMS + FAMILY ROOM  
+ ROOF LOUNGE AND TERRACE

FLOOR TYPE	SQ. M.	SQ. FT.
Ground Floor	249.34	2,683.87
Balcony / Terrace / Porch – GF	6.57	70.72
First Floor Area	242.72	2,612.62
Balcony / Terrace – First Floor	17.04	183.42
Second Floor Area	116.07	1,249.37
Balcony / Terrace – Second Floor	44.10	474.69
Garage – Covered	48.66	523.77
TOTAL BUILT-UP AREA		
Garage with Pergola	0.0	0.0
TOTAL AREA		

Numbers, square footage and floor plans are approximate. Final dimensions, square footage and floor plans may vary and are subject to change without notice. The developer reserves the right to make revisions. Built-Up Area is measured in accordance with Dubai Land Department standards. Plans, artistic renderings, landscaping and images are for illustrative purposes only and are subject to change without notice. Landscape shown is indicative and not provided by the developer. Pool layout and configuration shown on floor plans are for general illustrative purposes only and are not provided by the developer. The Bespoke Edition Option offered to the buyer at additional price will include a standard pool offering.



A C U R A T E D C O L L E C T I O N



1

T H E  
C O R A L  
V I L L A S

Serenity By The Sea

Beachfront living at its finest  
An iconic neighbourhood  
Introducing the Coral Collection

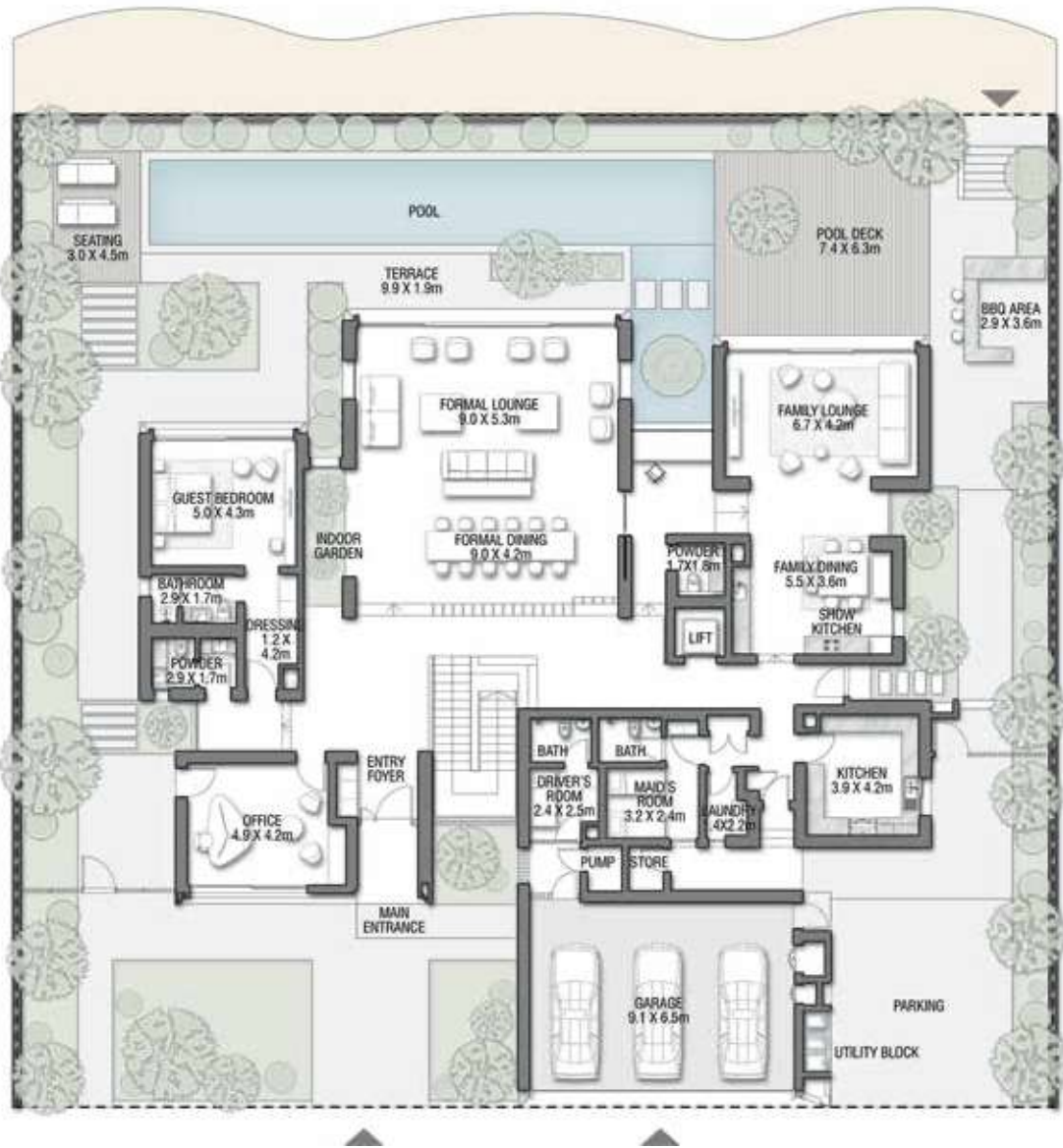
— p.6  
— p.15  
— p.20



This spacious family villa is comprised of a series of irregularly stacked volumes that offer a succession of beautiful, private terraces.







GROUND FLOOR



SECOND FLOOR



FIRST FLOOR

VILLA

# CORAL LIVING

Coral Villas Collection

G + 2

7 BEDROOMS + FORMAL AND FAMILY LOUNGES  
+ OFFICE + ROOF LOUNGE AND TERRACE

FLOOR TYPE	SQ. M.	SQ. FT.
Ground Floor	421.51	4,537.10
Balcony / Terrace / Porch - GF	7.24	77.93
First Floor Area	328.33	3,534.11
Balcony / Terrace - First Floor	26.35	283.63
Second Floor Area	138.29	1,488.54
Balcony / Terrace - Second Floor	35.84	385.78
Garage - Covered	85.00	914.93
TOTAL BUILT-UP AREA	1,042.56	11,222.02
Garage with Pergola	0.0	0.0
TOTAL AREA	1,042.56	11,222.02

Numbers, square footage and floor plans are approximate. Final dimensions, square footage and floor plans may vary and are subject to change without notice. The developer reserves the right to make revisions. Built-Up Area is measured in accordance with Dubai Land Department standards. Plans, artistic renderings, landscaping and images are for illustrative purposes only and are subject to change without notice. Landscape shown is indicative and not provided by the developer. Pool layout and configuration shown on floor plans are for general illustrative purposes only and are not provided by the developer. The Bespoke Edition Option offered to the buyer at additional price will include a standard pool offering.



“Most of the indoor spaces have been designed to best capture panoramic views. The indoor spaces best connect with the outdoor spaces by maximising glazing throughout.”

WHITESPACE - ARCHITECT



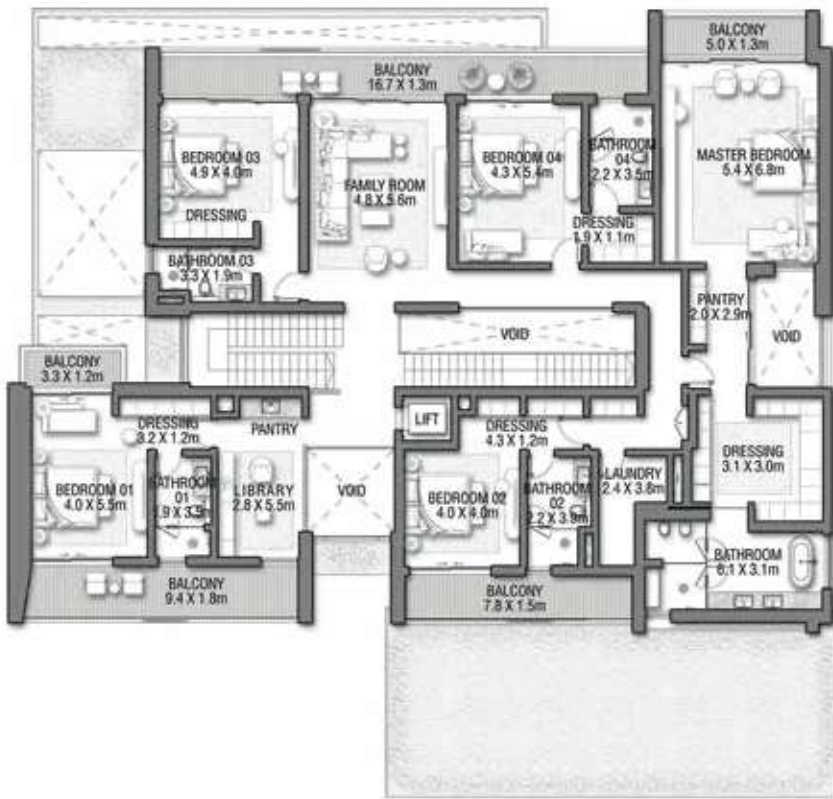




GROUND FLOOR



SECOND FLOOR



FIRST FLOOR

VILLA

# CRANBERRY SKY

Coral Villas Collection

G + 2

7 BEDROOMS + FORMAL AND FAMILY LOUNGES  
+ LIBRARY + ROOF LOUNGE AND TERRACE

FLOOR TYPE	SQ. M.	SQ. FT.
Ground Floor	317.95	3,422.39
Balcony / Terrace / Porch - GF	4.12	44.35
First Floor Area	378.33	4,072.31
Balcony / Terrace - First Floor	72.09	775.97
Second Floor Area	155.42	1,672.93
Balcony / Terrace - Second Floor	50.18	540.13
Garage - Covered	85.45	919.78
<b>TOTAL BUILT-UP AREA</b>	<b>1,063.54</b>	<b>11,447.85</b>
Garage with Pergola	0.0	0.0
<b>TOTAL AREA</b>	<b>1,063.54</b>	<b>11,447.85</b>

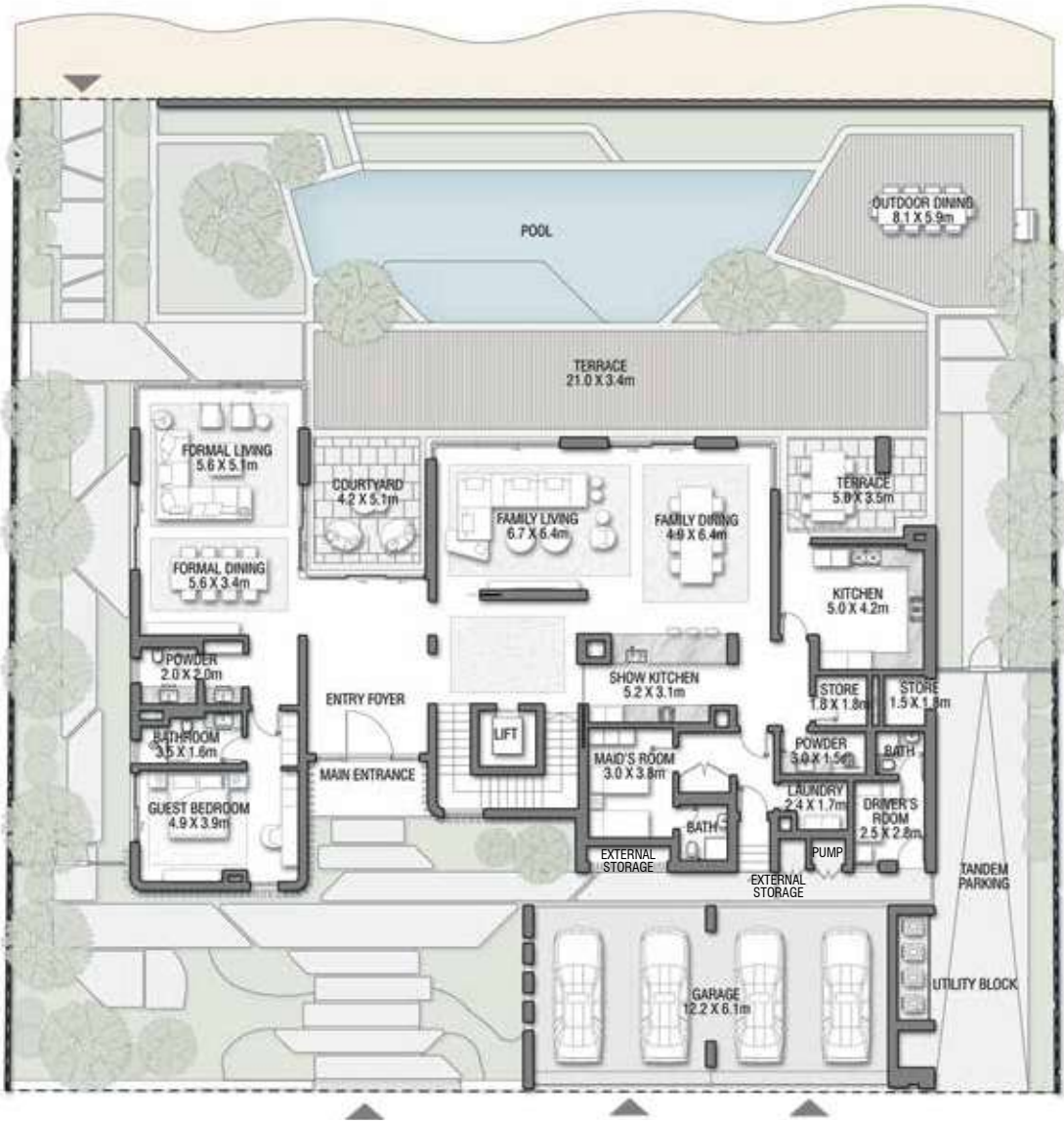
Numbers, square footage and floor plans are approximate. Final dimensions, square footage and floor plans may vary and are subject to change without notice. The developer reserves the right to make revisions. Built-Up Area is measured in accordance with Dubai Land Department standards. Plans, artistic renderings, landscaping and images are for illustrative purposes only and are subject to change without notice. Landscape shown is indicative and not provided by the developer. Pool layout and configuration shown on floor plans are for general illustrative purposes only and are not provided by the developer. The Bespoke Edition Option offered to the buyer at additional price will include a standard pool offering.



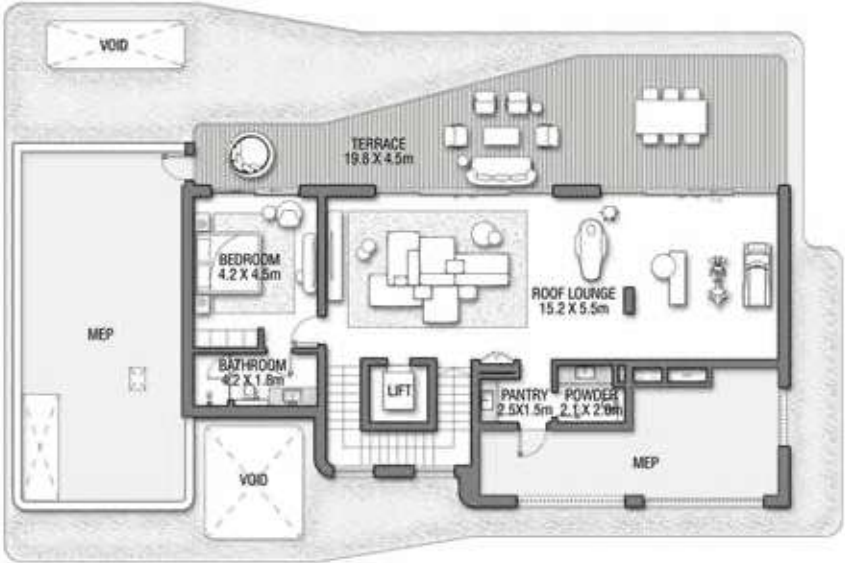
A grand, double-height entrance faces onto a sunlit courtyard offering views the sea. While sweeping contemporary glass balustrades on all terraces, will let residents feel as though they are aboard a luxury cruise as they gaze out over the spectacular sea views.



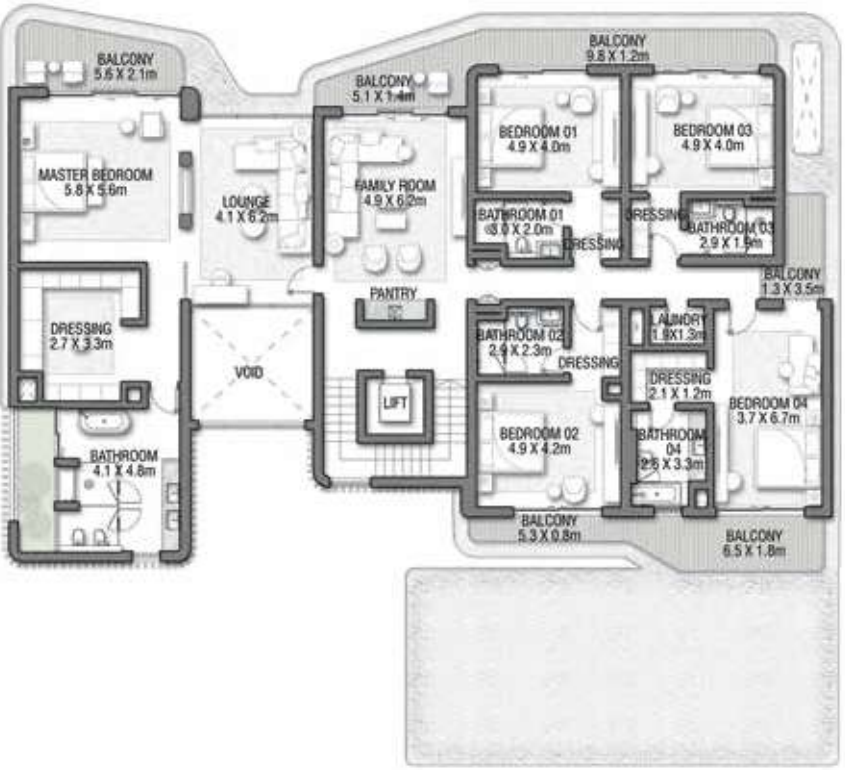




GROUND FLOOR



SECOND FLOOR



FIRST FLOOR

VILLA  
HIBISCUS

Coral Villas Collection

G + 2

7 BEDROOMS + FORMAL AND FAMILY LOUNGES  
+ ROOF LOUNGE AND TERRACE

FLOOR TYPE	SQ. M.	SQ. FT.
Ground Floor	353.21	3,801.92
Balcony / Terrace / Porch - GF	20.94	225.40
First Floor Area	347.64	3,741.97
Balcony / Terrace - First Floor	74.18	798.47
Second Floor Area	157.93	1,699.94
Balcony / Terrace - Second Floor	75.18	809.23
Garage - Covered	86.45	930.54
TOTAL BUILT-UP AREA	1,115.53	12,007.46
Garage with Pergola	0.0	0.0
TOTAL AREA	1,115.53	12,007.46

Numbers, square footage and floor plans are approximate. Final dimensions, square footage and floor plans may vary and are subject to change without notice. The developer reserves the right to make revisions. Built-Up Area is measured in accordance with Dubai Land Department standards. Plans, artistic renderings, landscaping and images are for illustrative purposes only and are subject to change without notice. Landscape shown is indicative and not provided by the developer. Pool layout and configuration shown on floor plans are for general illustrative purposes only and are not provided by the developer. The Bespoke Edition Option offered to the buyer at additional price will include a standard pool offering.

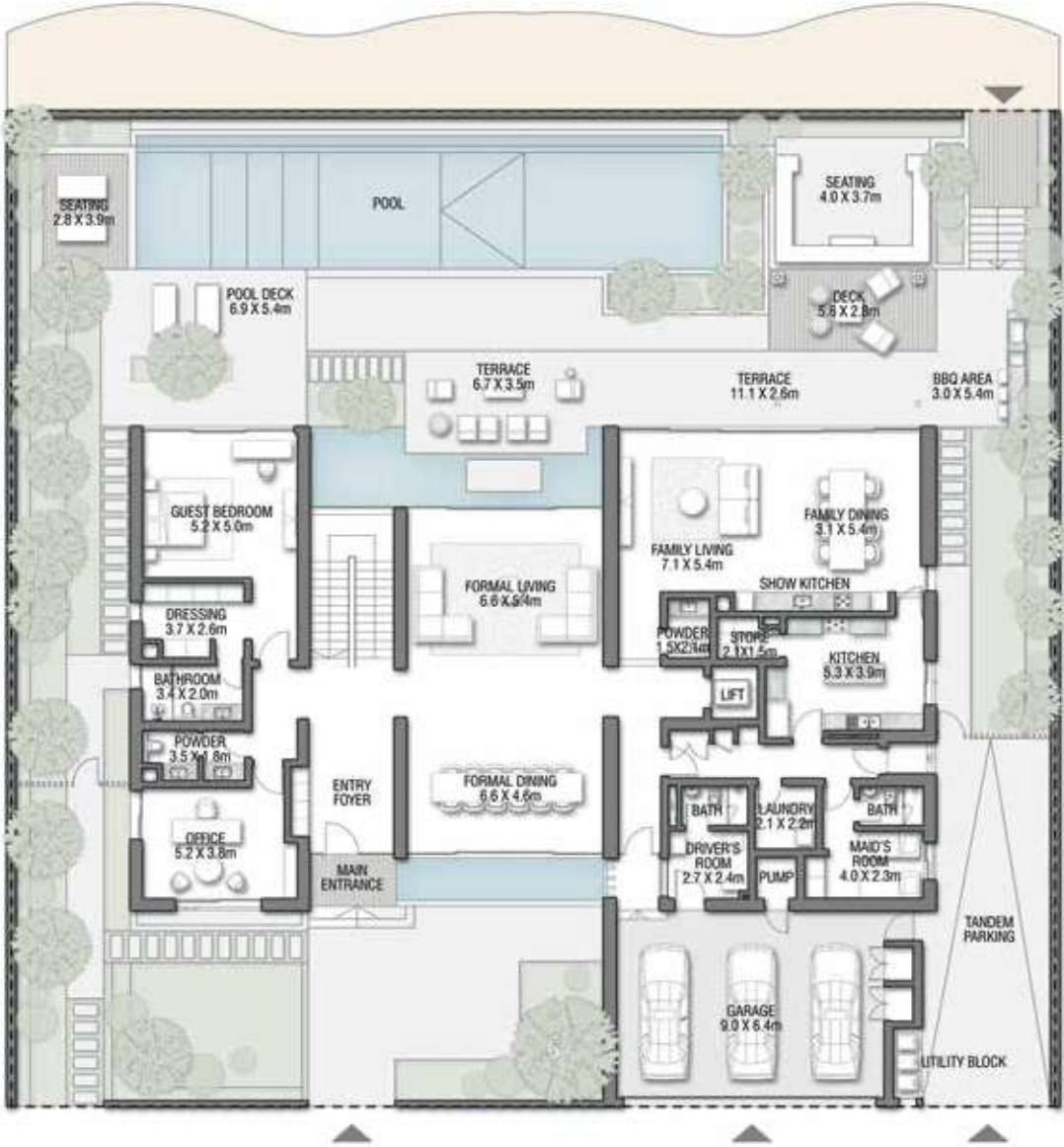


“This concept is purely horizontal and panoramic in nature, emphasising the visual connection to the view and towards the exterior landscape.”

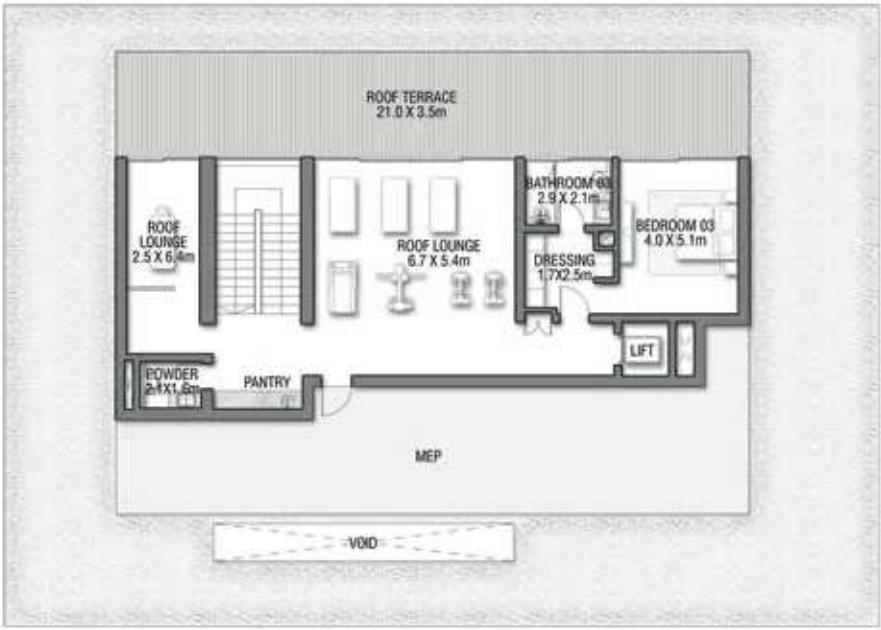
LOCI - ARCHITECT



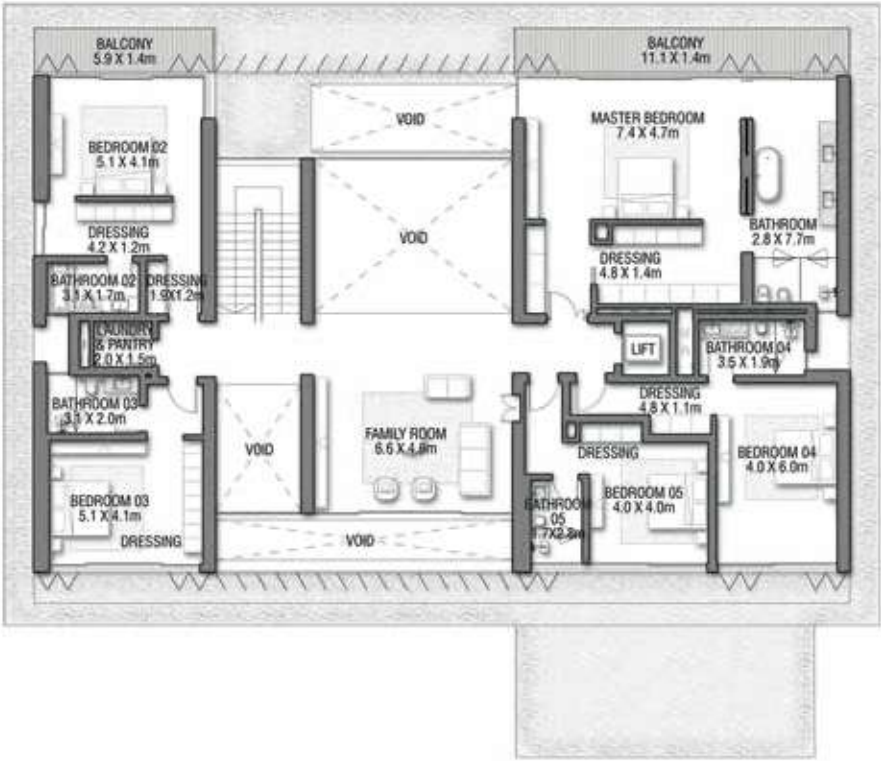




GROUND FLOOR



SECOND FLOOR



FIRST FLOOR

VILLA

PORCELAIN  
ROSES

Coral Villas Collection

G + 2

7 BEDROOMS + FORMAL AND FAMILY LOUNGES  
+ OFFICE + ROOF LOUNGE AND TERRACE

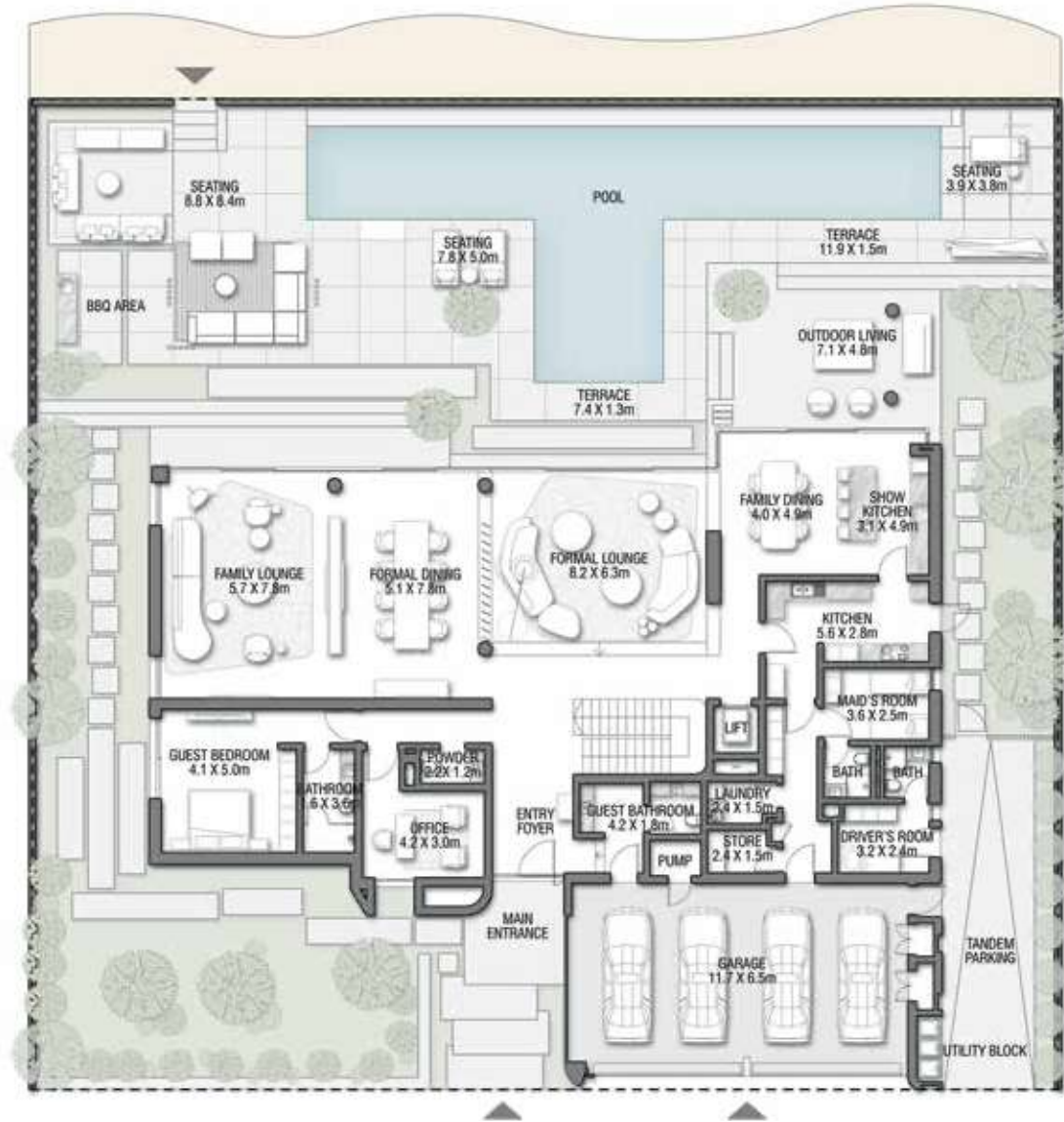
FLOOR TYPE	SQ. M.	SQ. FT.
Ground Floor	383.32	4,126.02
Balcony / Terrace / Porch - GF	2.01	21.64
First Floor Area	346.46	3,729.26
Balcony / Terrace - First Floor	25.64	275.99
Second Floor Area	161.19	1,735.03
Balcony / Terrace - Second Floor	75.32	810.74
Garage - Covered	77.30	832.05
TOTAL BUILT-UP AREA	1,071.24	11,530.73
Garage with Pergola	0.0	0.0
TOTAL AREA	1,071.24	11,530.73



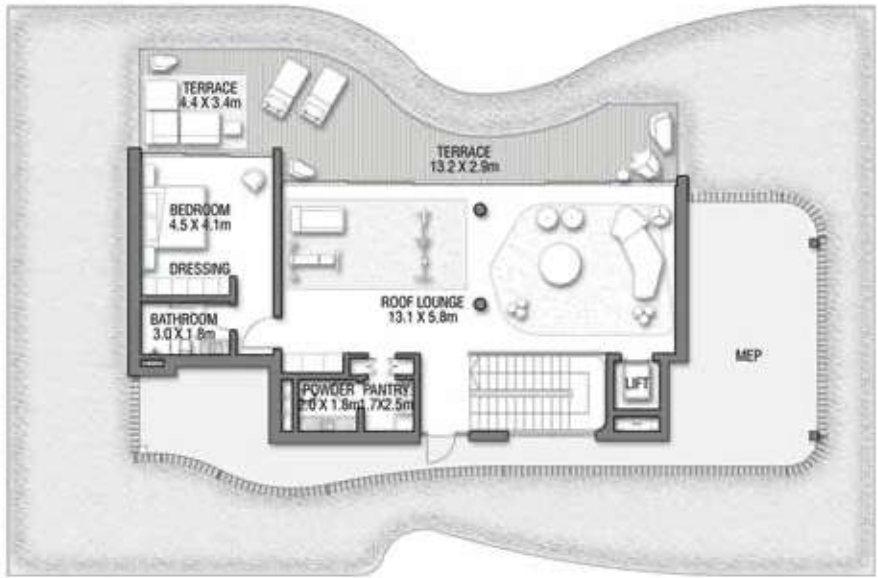
This elegant home incorporates an abundance of outdoor space to embrace the stunning seaside setting, with many of the rooms boasting views over the peaceful beach garden. The perfect setting to embrace the light of the sunrise making its way through your home.



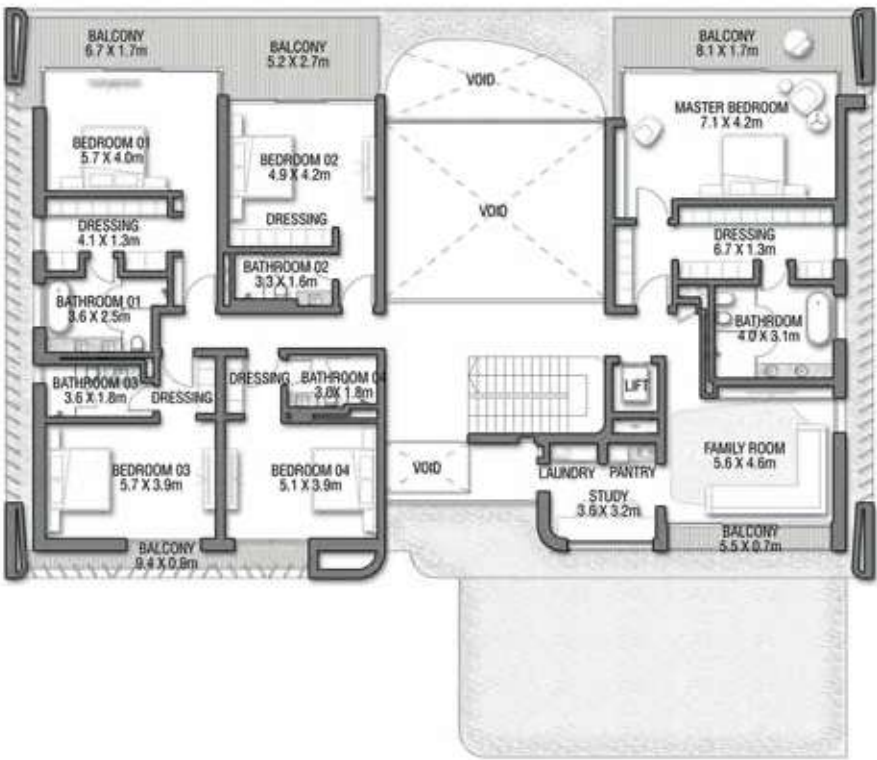




GROUND FLOOR



SECOND FLOOR



FIRST FLOOR

VILLA

# RED AURORA

Coral Villas Collection

G + 2

7 BEDROOMS + FORMAL AND FAMILY LOUNGES  
+ OFFICE + STUDY + ROOF LOUNGE  
AND TERRACE

FLOOR TYPE	SQ. M.	SQ. FT.
Ground Floor	390.40	4,202.23
Balcony / Terrace / Porch - GF	0.0	0.0
First Floor Area	357.26	3,845.51
Balcony / Terrace - First Floor	46.21	497.40
Second Floor Area	151.29	1,628.47
Balcony / Terrace - Second Floor	50.47	543.25
Garage - Covered	85.01	915.04
<b>TOTAL BUILT-UP AREA</b>	<b>1,080.64</b>	<b>11,631.91</b>
Garage with Pergola	0.0	0.0
<b>TOTAL AREA</b>	<b>1,080.64</b>	<b>11,631.91</b>

Numbers, square footage and floor plans are approximate. Final dimensions, square footage and floor plans may vary and are subject to change without notice. The developer reserves the right to make revisions. Built-Up Area is measured in accordance with Dubai Land Department standards. Plans, artistic renderings, landscaping and images are for illustrative purposes only and are subject to change without notice. Landscape shown is indicative and not provided by the developer. Pool layout and configuration shown on floor plans are for general illustrative purposes only and are not provided by the developer. The Bespoke Edition Option offered to the buyer at additional price will include a standard pool offering.



"The villa accentuates the beauty of nature by layering different textures of unfinished stone with fresh timber tones to create an impactful essence of raw tranquillity"

LW DESIGN - ARCHITECTS





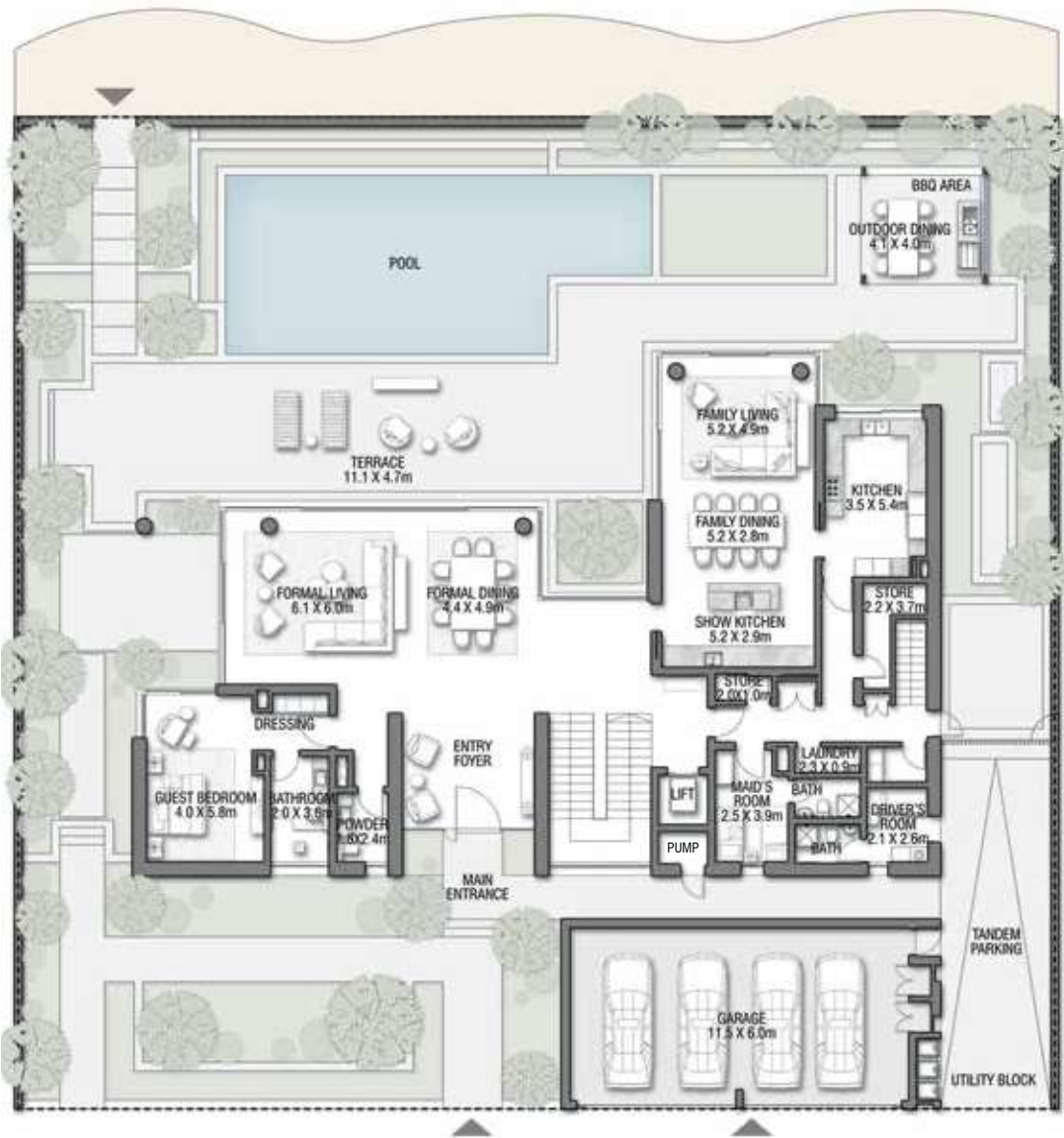
VILLA  
REDWOOD

Coral Villas Collection

G + 2

7 BEDROOMS + FORMAL AND FAMILY LOUNGES  
+ ROOF LOUNGE AND TERRACE

FLOOR TYPE	SQ. M.	SQ. FT.
Ground Floor	343.78	3,700.42
Balcony / Terrace / Porch - GF	6.44	69.32
First Floor Area	373.82	4,023.76
Balcony / Terrace - First Floor	36.75	395.57
Second Floor Area	209.40	2,253.96
Balcony / Terrace - Second Floor	78.29	842.71
Garage - Covered	81.72	879.63
TOTAL BUILT-UP AREA	1,130.20	12,165.37
Garage with Pergola	0.0	0.0
TOTAL AREA	1,130.20	12,165.37



GROUND FLOOR



SECOND FLOOR



FIRST FLOOR

Numbers, square footage and floor plans are approximate. Final dimensions, square footage and floor plans may vary and are subject to change without notice. The developer reserves the right to make revisions. Built-Up Area is measured in accordance with Dubai Land Department standards. Plans, artistic renderings, landscaping and images are for illustrative purposes only and are subject to change without notice. Landscape shown is indicative and not provided by the developer. Pool layout and configuration shown on floor plans are for general illustrative purposes only and are not provided by the developer. The Bespoke Edition Option offered to the buyer at additional price will include a standard pool offering.





LIVE IN THE MASTERPIECE

“The indoor and outdoor spaces are seamlessly connected.”

WHITESPACE - ARCHITECT

VILLA RUBY SUNSET // PALM JEBEL ALI





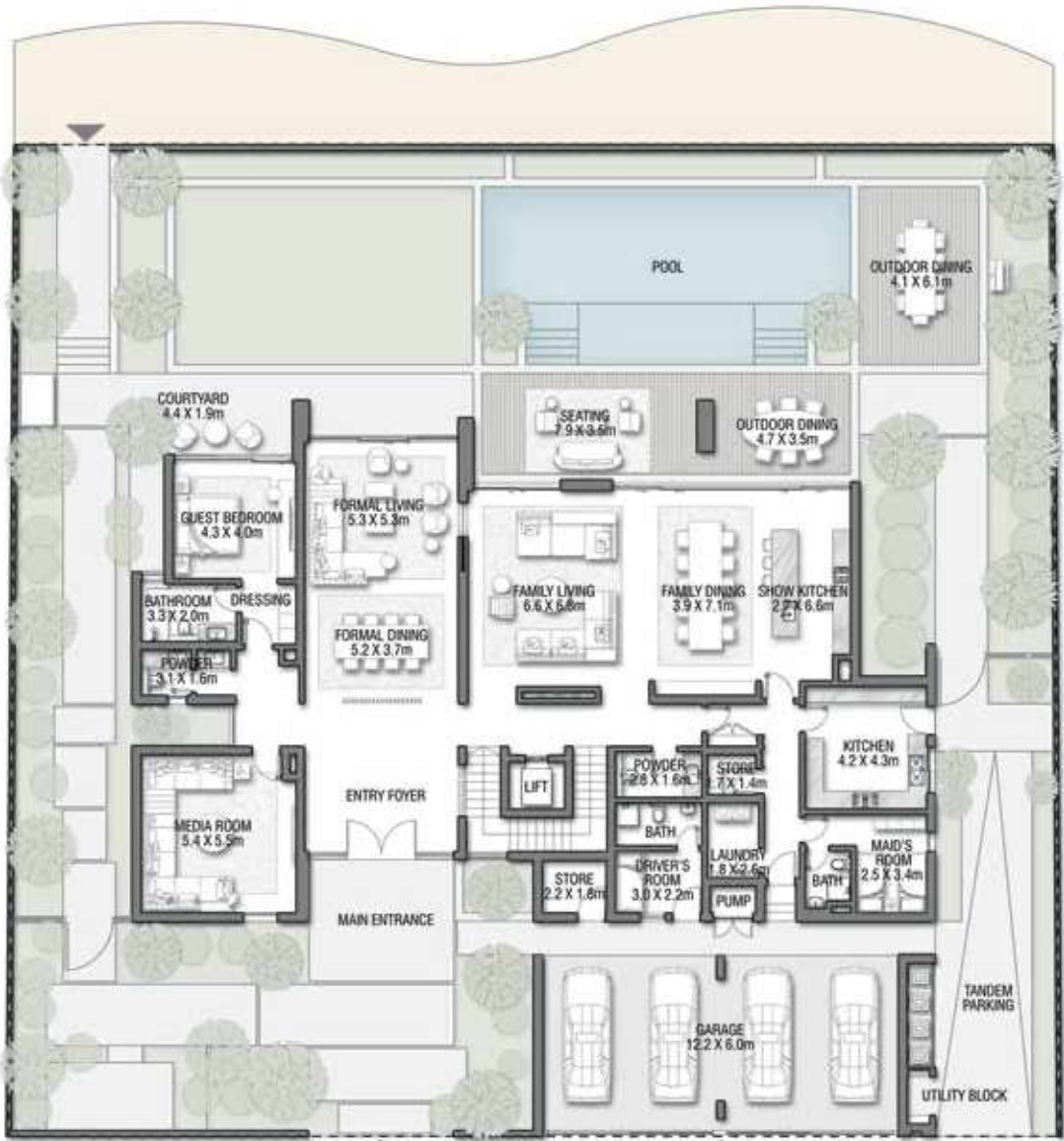
RUBY  
SUNSET

Coral Villas Collection

G + 2

7 BEDROOMS + FORMAL AND FAMILY LOUNGES  
+ LIBRARY + MEDIA ROOM + ROOF LOUNGE  
AND TERRACE

FLOOR TYPE	SQ. M.	SQ. FT.
Ground Floor	381.38	4,105.14
Balcony / Terrace / Porch - GF	1.38	14.85
First Floor Area	362.65	3,903.53
Balcony / Terrace - First Floor	60.00	645.83
Second Floor Area	166.90	1,796.50
Balcony / Terrace - Second Floor	72.71	782.64
Garage - Covered	84.26	906.97
TOTAL BUILT-UP AREA	1,129.28	12,155.47
Garage with Pergola	0.0	0.0
TOTAL AREA	1,129.28	12,155.47



GROUND FLOOR



SECOND FLOOR



FIRST FLOOR

Numbers, square footage and floor plans are approximate. Final dimensions, square footage and floor plans may vary and are subject to change without notice. The developer reserves the right to make revisions. Built-Up Area is measured in accordance with Dubai Land Department standards. Plans, artistic renderings, landscaping and images are for illustrative purposes only and are subject to change without notice. Landscape shown is indicative and not provided by the developer. Pool layout and configuration shown on floor plans are for general illustrative purposes only and are not provided by the developer. The Bespoke Edition Option offered to the buyer at additional price will include a standard pool offering.





This grandiose villa is the epitome of sophistication. Spend long, leisurely evenings on the wondrous waterfront terrace, enthralled by breathtaking views over the ever-enchanting sea and sky.





VILLA  
TERRACOTTA

Coral Villas Collection

G + 2

7 BEDROOMS + FORMAL AND FAMILY LOUNGES  
+ SHOW GARAGE + OFFICE + ROOF LOUNGE  
AND TERRACE

FLOOR TYPE	SQ. M.	SQ. FT.
Ground Floor	351.58	3,784.38
Balcony / Terrace / Porch - GF	0.0	0.0
First Floor Area	365.54	3,934.64
Balcony / Terrace - First Floor	73.21	788.03
Second Floor Area	180.54	1,943.32
Balcony / Terrace - Second Floor	92.52	995.88
Garage - Covered	64.50	694.27
TOTAL BUILT-UP AREA	1,127.89	12,140.51
Garage with Pergola	0.0	0.0
TOTAL AREA	1,127.89	12,140.51



GROUND FLOOR



SECOND FLOOR



FIRST FLOOR

Numbers, square footage and floor plans are approximate. Final dimensions, square footage and floor plans may vary and are subject to change without notice. The developer reserves the right to make revisions. Built-Up Area is measured in accordance with Dubai Land Department standards. Plans, artistic renderings, landscaping and images are for illustrative purposes only and are subject to change without notice. Landscape shown is indicative and not provided by the developer. Pool layout and configuration shown on floor plans are for general illustrative purposes only and are not provided by the developer. The Bespoke Edition Option offered to the buyer at additional price will include a standard pool offering.





