

ELANO
BY ORO 24

EDITION 2023 N° 4

THE ART OF **URBAN LIVING**

The background of the image is an abstract, close-up photograph of several wooden planks. The planks are arranged in a way that creates a complex, geometric pattern of overlapping planes and sharp angles. The lighting is warm and directional, casting soft shadows that emphasize the three-dimensional quality of the wood. The colors range from light tan to deep, dark brown, creating a rich, textured visual field.

URBAN LIVING. REINVENTED

ELANO
BY ORO 24

CURATED LIVING



GRAND
ENTRANCE
LOBBY



STATE OF
THE ART
SURVEILLANCE



PARTY HALL
WITH OUTDOOR
SEATING



25,000 SQ.FT
OF LANDSCAPED
GARDEN



30 METER
SWIMMING
POOL



OUTDOOR
CINEMA



CABANA
SEATING



BARBEQUE
STATIONS WITH
OUTDOOR DINING



WATER
FEATURES



TROPICAL
SHOWERS



TABLE
TENNIS



INDOOR
BASKETBALL



GAMING
ARCADE



KARAOKE



VIRTUAL
GOLF



HEALTH
CLUB



STEAM



SAUNA



LIBRARY



BILLIARDS

PREPARE FOR ELANO LIVING





**YOU ONLY LIVE ONCE
LIVE IT THE ELANO WAY**

ELANO
BY ORO24





ELANO
TAILORED
FOR YOU





LIVE THE ELANO LIFESTYLE EVERYDAY





ELANO
BY ORO24

ORO24.COM

YOUR
STYLISH
ENTRANCE
LOBBY



YOUR HOME YOUR STYLE

ELANO  BY ORO24

YOU ARE UNIQUE. YOU ARE ONE IN A MILLION.

YOUR HOME MUST REFLECT YOUR PERSONALITY AND WELCOME YOU WITH OPEN ARMS. WALKING INTO YOUR DREAM HOME CAN BE AN INCREDIBLY GRATIFYING EXPERIENCE, AS YOU FINALLY GET TO SEE ALL OF YOUR HARD WORK AND DEDICATION COME TO FRUITION. AS YOU STEP FOOT IN, YOU CAN'T HELP BUT FEEL A SENSE OF PRIDE AND ACCOMPLISHMENT. THE SPACE CREATED IS A REFLECTION OF UNIQUE TASTE AND STYLE, DON'T WAIT TO START MAKING IT YOUR OWN.

FROM THE CAREFULLY CURATED DECOR TO THE THOUGHTFULLY DESIGNED LAYOUT, EVERY DETAIL OF YOUR DREAM HOME HAS BEEN CHOSEN WITH INTENTION AND PURPOSE. THIS IS A SPACE WHERE YOU CAN TRULY BE YOURSELF AND FIND PEACE AND INSPIRATION. REALIZING THE DREAM OF WALKING INTO YOUR HOME IS A TRULY SPECIAL MOMENT THAT YOU WILL CHERISH FOR YEARS TO COME.

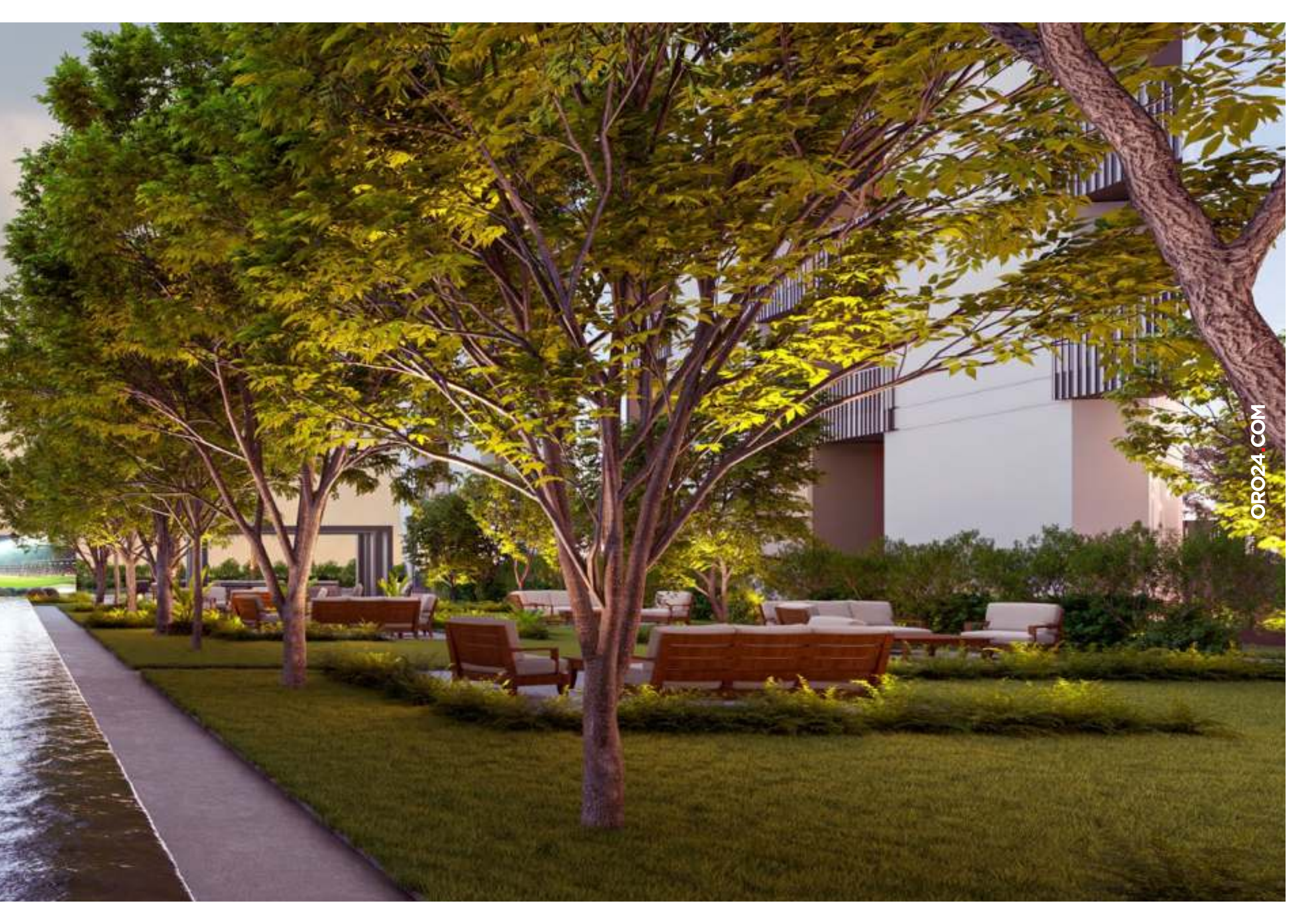
WELCOME TO ELANO. DESIGNER LIVING CRAFTED FOR YOU

ELANO

BY ORO24

ORO24.COM







**YOUR
OUTDOOR
LANDSCAPE**



ORO24.COM

**YOUR
30M POOL
WITH
CINEMA**



YOUR
CABANA



ORO24.COM

**YOUR
BARBEQUE
STATIONS**

UNWIND

ORO24.COM







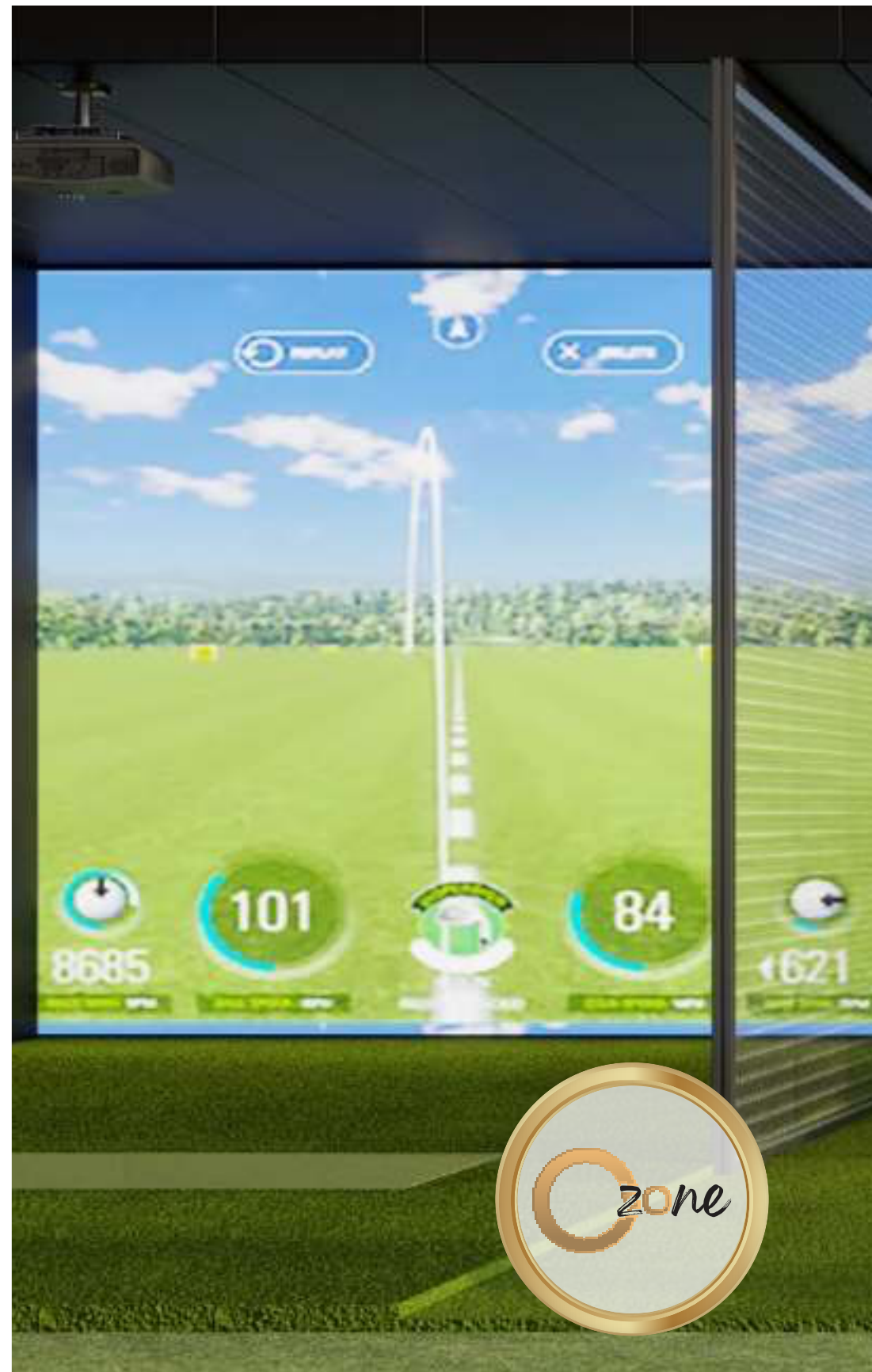
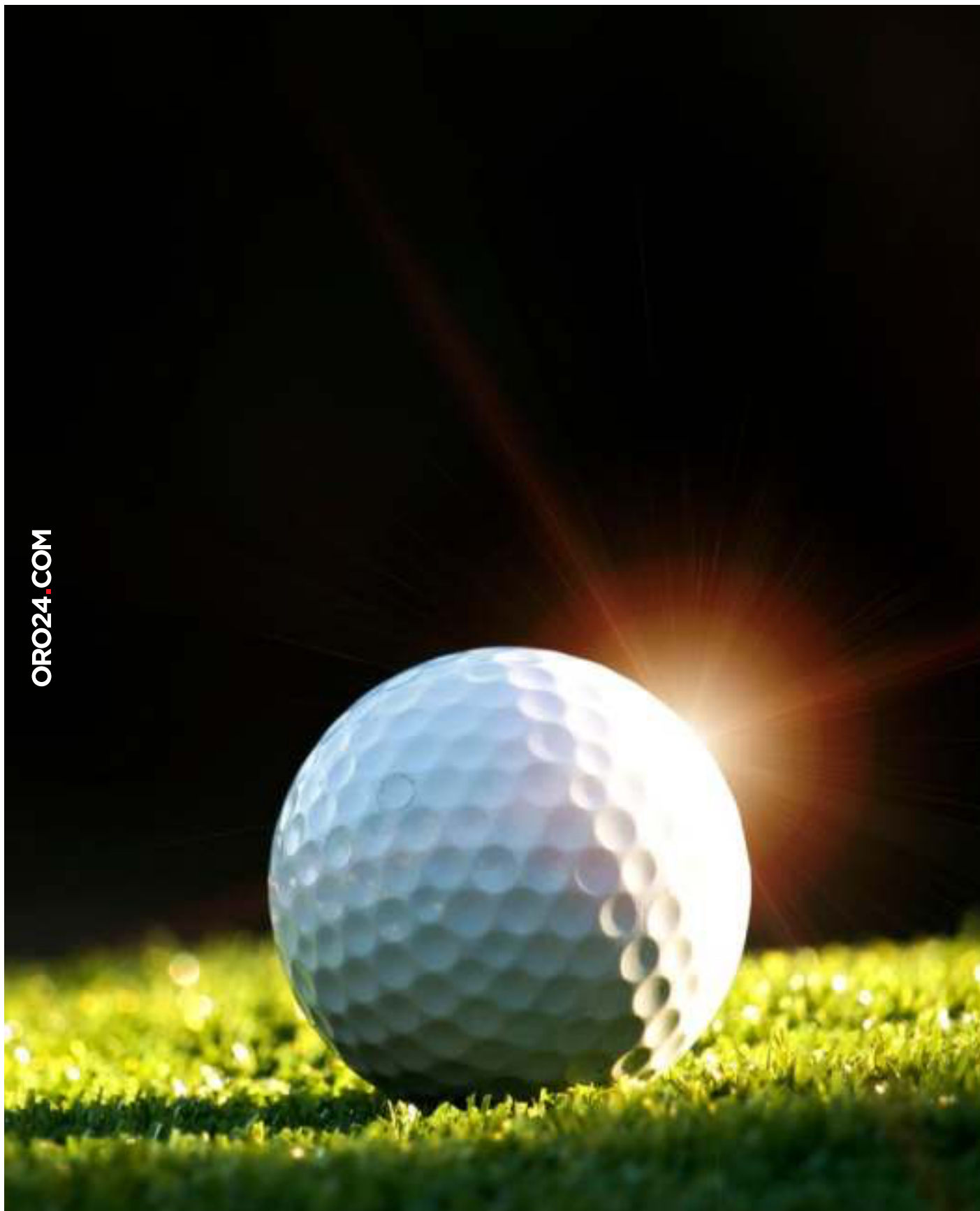


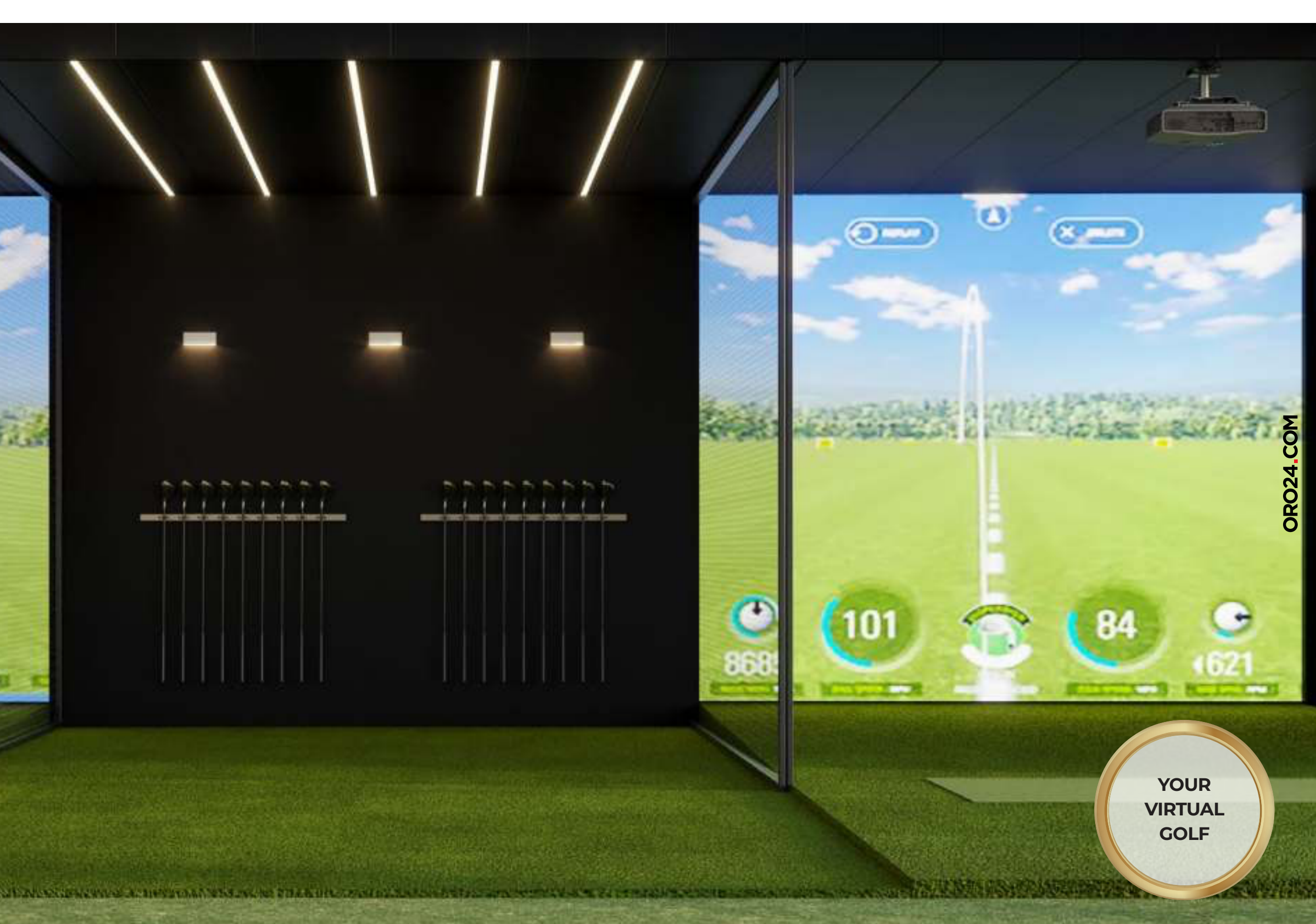
RESET





**YOUR
HEALTH
CLUB**





ORO24.COM

YOUR
VIRTUAL
GOLF



9 FLOORS

STUDIO TYPE 1



STUDIO TYPE 2

ONE BEDROOM TYPE 1

ONE BEDROOM TYPE 2



ONE BEDROOM TYPE 3

ONE BEDROOM TYPE 4

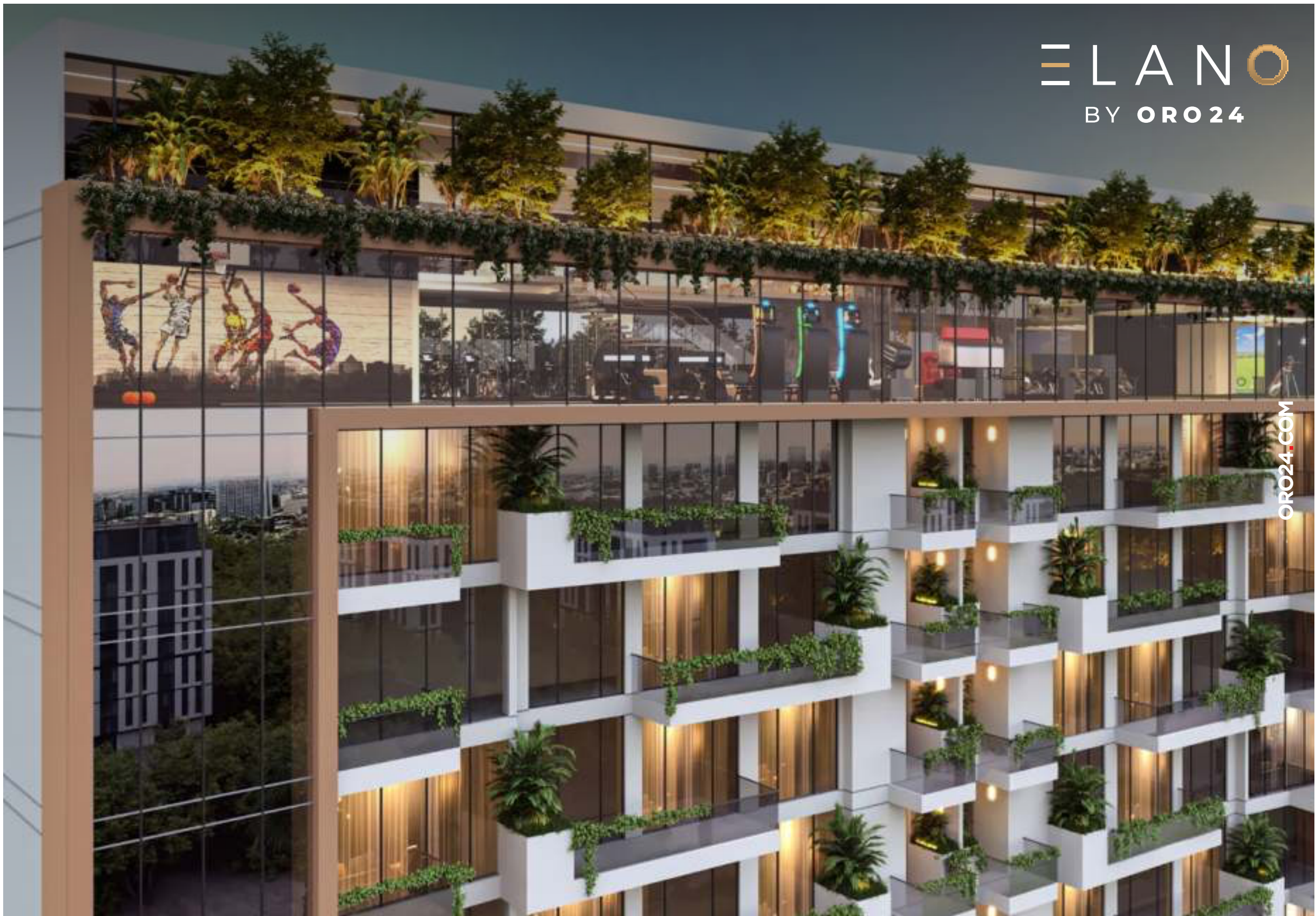
TWO BEDROOM TYPE 1



ELANO

BY ORO24

ORO24.COM







STUDIO TYPE 01



AREA

FROM
368.66 SQ.FT

DISCLAIMER : All design, features, amenities, materials, dimensions, layout drawings are approximate and subject to change without prior notice. Actual area of the Unit may vary from the stated area; drawings not to scale. Developer reserves the right to make revisions to comply with any Applicable Law or the requirements of any Relevant Authority. For actual sizes please refer the Unit Reservation Agreement.





STUDIO TYPE 02

AREA

FROM
393.85 SQ.FT

DISCLAIMER : All design, features, amenities, materials, dimensions, layout drawings are approximate and subject to change without prior notice. Actual area of the Unit may vary from the stated area; drawings not to scale. Developer reserves the right to make revisions to comply with any Applicable Law or the requirements of any Relevant Authority. For actual sizes please refer the Unit Reservation Agreement.





1 BEDROOM TYPE 01

AREA

FROM
516.99 SQ.FT

DISCLAIMER : All design, features, amenities, materials, dimensions, layout drawings are approximate and subject to change without prior notice. Actual area of the Unit may vary from the stated area; drawings not to scale. Developer reserves the right to make revisions to comply with any Applicable Law or the requirements of any Relevant Authority. For actual sizes please refer the Unit Reservation Agreement.





1 BEDROOM TYPE 02

AREA

FROM
670.59 SQ.FT





1 BEDROOM TYPE 03

AREA

FROM
729.47 SQ.FT





1 BEDROOM TYPE 04

AREA

FROM
785.77 SQ.FT

DISCLAIMER : All design, features, amenities, materials, dimensions, layout drawings are approximate and subject to change without prior notice. Actual area of the Unit may vary from the stated area; drawings not to scale. Developer reserves the right to make revisions to comply with any Applicable Law or the requirements of any Relevant Authority. For actual sizes please refer the Unit Reservation Agreement.





2 BEDROOM TYPE 01

AREA

FROM
1045.82 SQ.FT

DISCLAIMER : All design, features, amenities, materials, dimensions, layout drawings are approximate and subject to change without prior notice. Actual area of the Unit may vary from the stated area; drawings not to scale. Developer reserves the right to make revisions to comply with any Applicable Law or the requirements of any Relevant Authority. For actual sizes please refer the Unit Reservation Agreement.



ARJAN
CENTRALLY LOCATED



MALLS

MY CITY CENTRE	-	5 MINS
CIRCLE MALL	-	10 MINS
CITY CENTRE ME'AISEM	-	10 MINS
MALL OF THE EMIRATES	-	15 MINS
DUBAI HILLS MALL	-	15 MINS
MARINA MALL	-	15 MINS
AL BARSHA MALL	-	15 MINS
IBN BATTUTA MALL	-	20 MINS
NAKHEEL MALL	-	20 MINS



MEDICAL FACILITIES

NEURO SPINAL HOSPITAL	-	5 MINS
MEDICLINIC PARKVIEW HOSPITAL	-	5 MINS
ASTER CLINIC	-	15 MINS
SAUDI GERMAN HOSPITAL	-	15 MINS
AL ZAHRA HOSPITAL	-	15 MINS
MEDICLINIC MEADOWS	-	20 MINS



SCHOOLS

BLOOM WORLD ACADEMY	-	5 MINS
GEMS FOUNDERS SCHOOL	-	5 MINS
JSS INTERNATIONAL SCHOOL	-	10 MINS
SUNMARKE SCHOOL	-	10 MINS
ARCADIA SCHOOL	-	10 MINS
REPTON SCHOOL	-	10 MINS
NORD ANGLIA INTERNATIONAL SCHOOL	-	10 MINS



AIRPORTS

DUBAI INTERNATIONAL AIRPORT (DXB)	-	30 MINS
AL MAKTOUM INTERNATIONAL AIRPORT (DWC)	-	30 MINS



BEACHES

SUFOUH BEACH	-	20 MINS
MARINA BEACH	-	20 MINS
THE WALK	-	25 MINS
JBR	-	25 MINS
SUNSET BEACH	-	25 MINS



COMMUNITY PARKS

SABAT PARK	-	10 MINS
DOKHON PARK	-	10 MINS
SABAR PARK	-	10 MINS



MOTORWAYS

AL HESSA ROAD	-	10 MINS
SHEIKH MOHAMMED BIN ZAYED ROAD	-	10 MINS
SHEIKH ZAYED ROAD	-	20 MINS



ATTRACTIONS

DUBAI MIRACLE GARDEN	-	5 MINS
DUBAI BUTTERFLY GARDEN	-	5 MINS
GLOBAL VILLAGE	-	15 MINS



