




ANANTARA

MINA RAS AL KHAIMAH
RESIDENCES

RESIDE IN THE
SPLENDOUR OF MINA AT
ANANTARA RESIDENCES

01	INTRODUCTION	7
02	VISION & INSPIRATION	13
03	LOCATION	21
04	THE RESIDENCES	29
05	THE VILLAS	33
06	THE APARTMENTS	65
07	LIFESTYLE & RECREATION	84
08	ANANTARA HOTELS & RESORTS	96
09	JT+PARTNERS & RAK PROPERTIES	102

An aerial photograph of a large, modern resort complex. The complex features several high-rise buildings with curved, tiered facades, interspersed with lush greenery, swimming pools, and landscaped walkways. A prominent beach with white sand and numerous lounge chairs is visible in the lower-left quadrant. The resort is situated on a peninsula or island, with a clear blue sea surrounding it. A white line with an arrow points from the text to a specific building in the lower-right area of the resort.

ANANTARA MINA
RAS AL KHAIMAH
RESIDENCES



Anantara, renowned for its Thai-inspired luxury hospitality, partners with RAK Properties, the Emirates' leading developer for over two decades, to introduce an exclusive collection of waterfront residences in Mina, Ras Al Khaimah.

This collaboration blends Anantara's signature elegance with RAK Properties' commitment to excellence, offering sophisticated living spaces with world-class amenities, seamless access to the sea, and impeccable service.

Exceptional waterfront living awaits on the Mina peninsula.



VISION

A masterpiece of contemporary design, Anantara Mina Residences draws inspiration from the fluidity of the sea, with cascading architectural forms that embrace the coastline and maximise natural light. Composed of a collection of apartments and villas, the development offers exclusive waterfront living.

The interiors reflect an elegant nautical aesthetic, blending soft, organic textures with high-end finishes that incorporate Thai and Arabian motifs. Natural materials sourced from the surrounding environment ensure harmony between land and water, while expansive terraces and floor-to-ceiling windows provide uninterrupted views of the Arabian Gulf, all designed to offer privacy, serenity, and a profound sense of place.





DESIGN INSPIRATION

Gracefully unfolding against the horizon, these residences offer gentle tiers that unfold at every level, each home framing panoramic seascapes that stretch uninterrupted in boundless blue. Generous terraces complement floor-to-ceiling windows, creating living spaces where light and sea become essential elements of everyday splendour.

19

Thai refinement harmonises with Arabian heritage, and contemporary nautical influences guide the thoughtful interior architecture. Clean lines and artisanal finishes reflect the surrounding coastal landscape, creating homes that resonate with their environment.

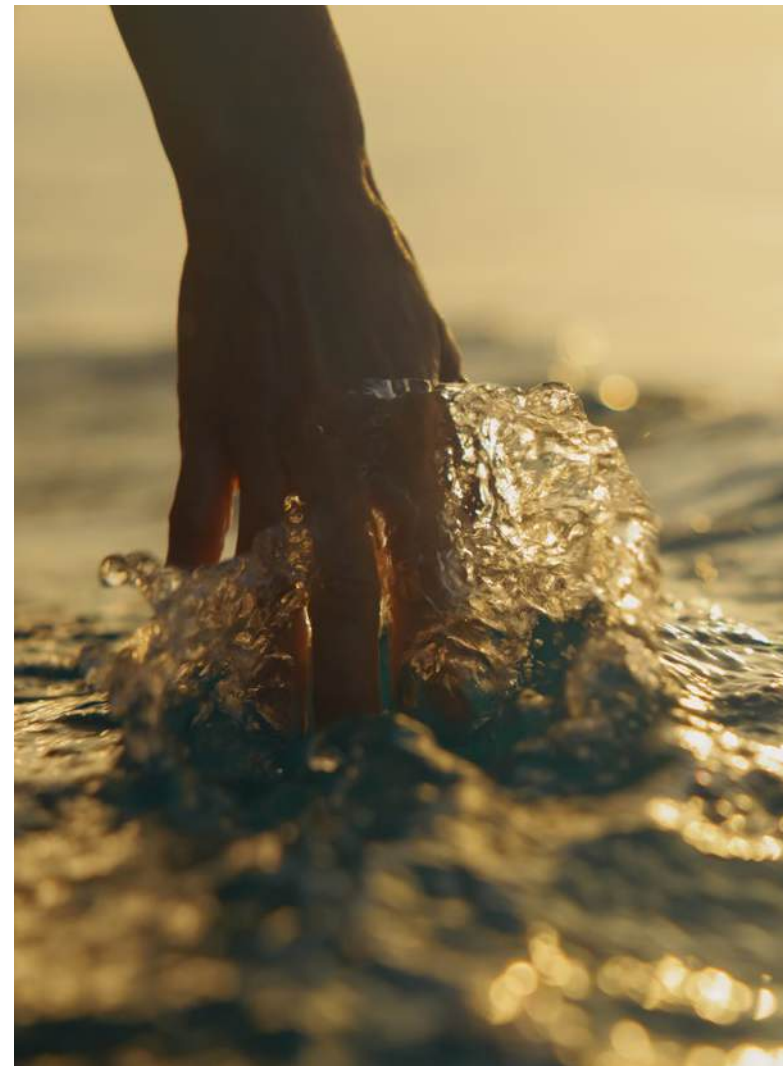
From private villas with mirror-like pools to sea-facing apartments bathed in light, each residence delivers exclusive living designed around nature's perfect inspiration.

UNITED ARAB EMIRATES

Where ancient sands meet futuristic aspirations, the United Arab Emirates embodies boundless possibility. Desert landscapes resound with Bedouin heritage, while soaring skyscrapers reflect an unrelenting pursuit of innovation. A place where tradition and modernity exist in effortless harmony.

Seven Emirates move to their own rhythm, from Dubai's electric energy and Abu Dhabi's cultural might to Sharjah's artistic spirit and the historic depth and diversity of Ras Al Khaimah.

22



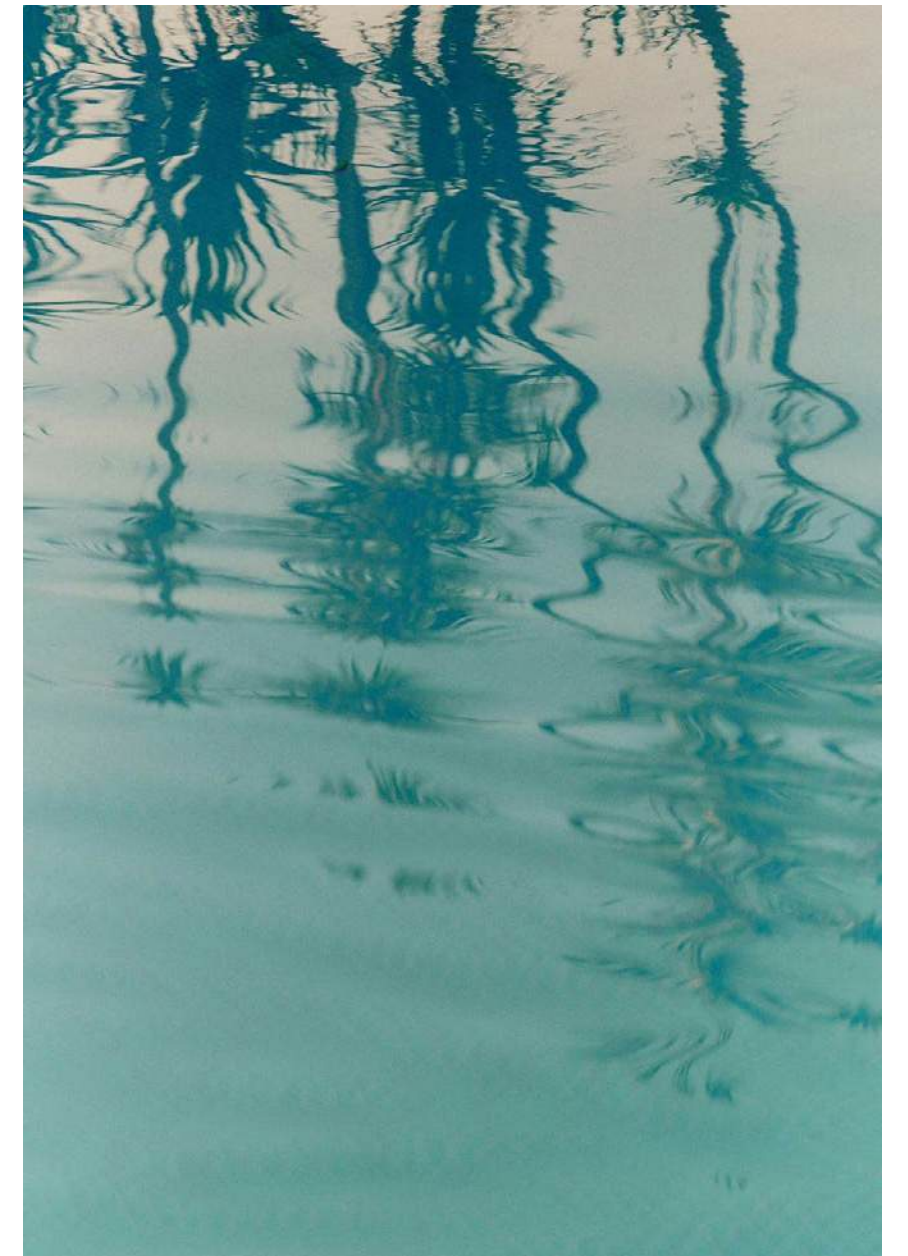
RAS AL KHAIMAH

A modern crossroads connecting the Middle East, Africa, and Europe, Ras Al Khaimah is the UAE's northernmost Emirate — an exquisite sanctuary just 45 minutes from Dubai. With a rich heritage spanning 7,000 years and four UNESCO-listed sites, it seamlessly blends tradition with cutting-edge ambition.

From its pristine 64-kilometre coastline to the breathtaking heights of Jebel Jais, Ras Al Khaimah offers an unrivalled tapestry of natural wonders and elite experiences. Bathed in year-round sunshine and renowned for its ease of doing business, it is the ultimate destination for discerning individuals seeking a refined lifestyle amidst untouched beauty.

MINA

Situated on the unspoiled coastline of Ras Al Khaimah, Mina is a sophisticated destination of contemporary living that highlights the natural splendour of its surroundings. It comprises of two man-made islands, Raha and Hayat, and is designed with a deep respect for the environment. This exquisite community is framed by lush parklands and two million square metres of protected mangroves, offering residents a blissful escape from the city.



25

HAYAT ISLAND

Hayat Island, Mina is thoughtfully designed for luxury living along the shores of the Arabian Gulf.

This prestigious enclave offers elegant residences, world-class hotels, and an exceptional retail landscape including designer boutiques and traditional souks. Savour oceanfront dining, stroll along scenic promenades, or unwind in flourishing green spaces.

With nature trails, mangroves, and a flamingo reserve, life here is beautifully connected to the sea. Sophistication and serenity thrive harmoniously on the shores of Hayat Island.

KEY LANDMARKS

- 1 Anantara Residences
- 2 InterContinental Resort & Spa
- 3 Nikki Beach Resort & Spa
- 4 Anantara Resort

TIME TO KEY DESTINATIONS

Ras Al Khaimah International Airport	15 Min
Sharjah International Airport	30 Min
Dubai International Airport	45 Min
Abu Dhabi International Airport	2 Hrs 30 Min





Overlooking the Arabian Gulf, Anantara Mina Residences enrich island living through the distinguished hallmark of the Anantara brand, bringing heartfelt hospitality into residential life.

Situated on pristine Hayat Island, these branded homes deliver a privileged home experience with access to the personalised service and five-star amenities of Anantara Mina, which include award-winning dining, Anantara Spa and a private cinema.

From elegant apartments with generous balconies to waterfront villas with private pools and boat docks, each residence benefits from Anantara's signature attention to detail. Daily living is enriched by dedicated experts who embody the brand's Thai-inspired traditions.

Here, home transcends physical space to become an ongoing experience of Anantara's celebrated approach to luxury living.

Where azure waters merge with thoughtful design, Anantara Residences on Hayat Island presents a blueprint for waterfront living. Here, cascading villas emerge against the Arabian sky, each level revealing new perspectives of the endless horizon through sweeping glass walls and expansive terraces.

Incorporating a minimalist aesthetic, these three, four and five-bedroom retreats are filled with natural light, allowing residents to admire the lush beauty of the surroundings from secluded spaces. Each villa opens onto a sheltered garden and shimmering pool, and individual boat docks provide convenient access to explore the coast at leisure.





3 BEDROOM VILLA

37



3 bedroom villa pool





3 bedroom, primary bedroom



3 bedroom living room



3 bedroom living room



4 BEDROOM VILLA

49



4 bedroom, primary bedroom





4 bedroom villa pool





5 BEDROOM VILLA

59



5 bedroom villa pool



Anantara Mina Residences offers a collection of lofts, one, two and three-bedroom apartments, including duplex sky units, with floor-to-ceiling windows that frame the gently changing hues of the Arabian Gulf.

Natural materials and handcrafted details create spaces where light becomes a living presence, transforming with the day's passage across water and sky.

Exclusive resort-style amenities such as glittering pools, kids clubs, dining and an indoor cinema provide residents with engaging diversions, while Anantara's signature hospitality elevates each moment.







view from canal



canal aerial view





sky villa loft bedroom





sky villa living room



sky villa dining room

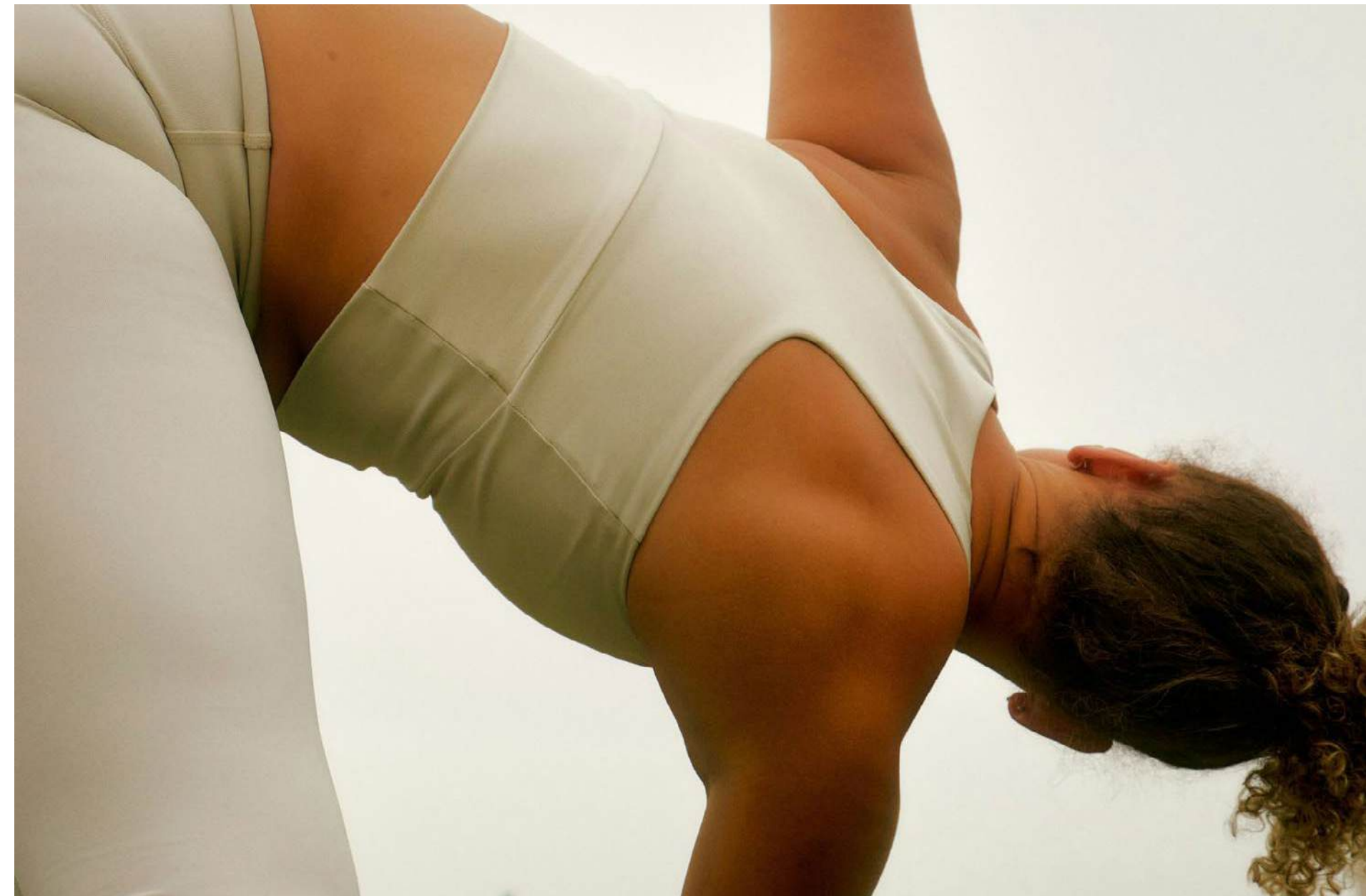


86

Residents can dive into a world of discoveries, immersing themselves in the thriving community and exceptional amenities of Hayat Island and Mina. Within their private enclave, they enjoy exclusive access to gourmet restaurants, a private cinema, event spaces, and wellness-focused amenities including a fitness centre and yoga studio.

Families will delight in the indoor and outdoor kids' clubs, two inviting pools and the running tracks that encircle the island.

A picturesque promenade connects Anantara with exciting entertainment venues, socialising, high-end retail, cultural and exceptional culinary exploration, all within five minutes' walk of the water's edge. For seamless connections, an electric buggy service is available for transport between the residential tower and the island's many diversions, as well as Anantara Mina Resort, where residents can enjoy the serenity of Anantara Spa.





AMENITIES / FACILITIES

- Concierge
- Housekeeping
- Onsite fitness centre
- Yoga studio
- Café
- Restaurant
- Indoor and outdoor kids clubs
- Sunrise pool
- Infinity pool
- Electric buggy service

Our experienced teams provide a full range of support services, including assistance with ownership structures, rental pools, marketing, sales and management.

À LA CARTE SERVICES

RESIDENTIAL OPERATIONS

PERSONAL SERVICES

- Nanny / childcare arrangements
- Housekeeping
- Administrative / personal arrangements
- Assistant services
- Laundry and dry cleaning
- Car washing and detailing
- In-room dining

90

RECREATION

Personal trainer

In-residence treatment / services

EVENT & FOOD SERVICES

Personal chef

Grocery / food delivery

Party, function and event planning

Meeting / conference rooms through hotel

91

EXCLUSIVE UPGRADE
TO MINOR DISCOVERY
TITANIUM STATUS

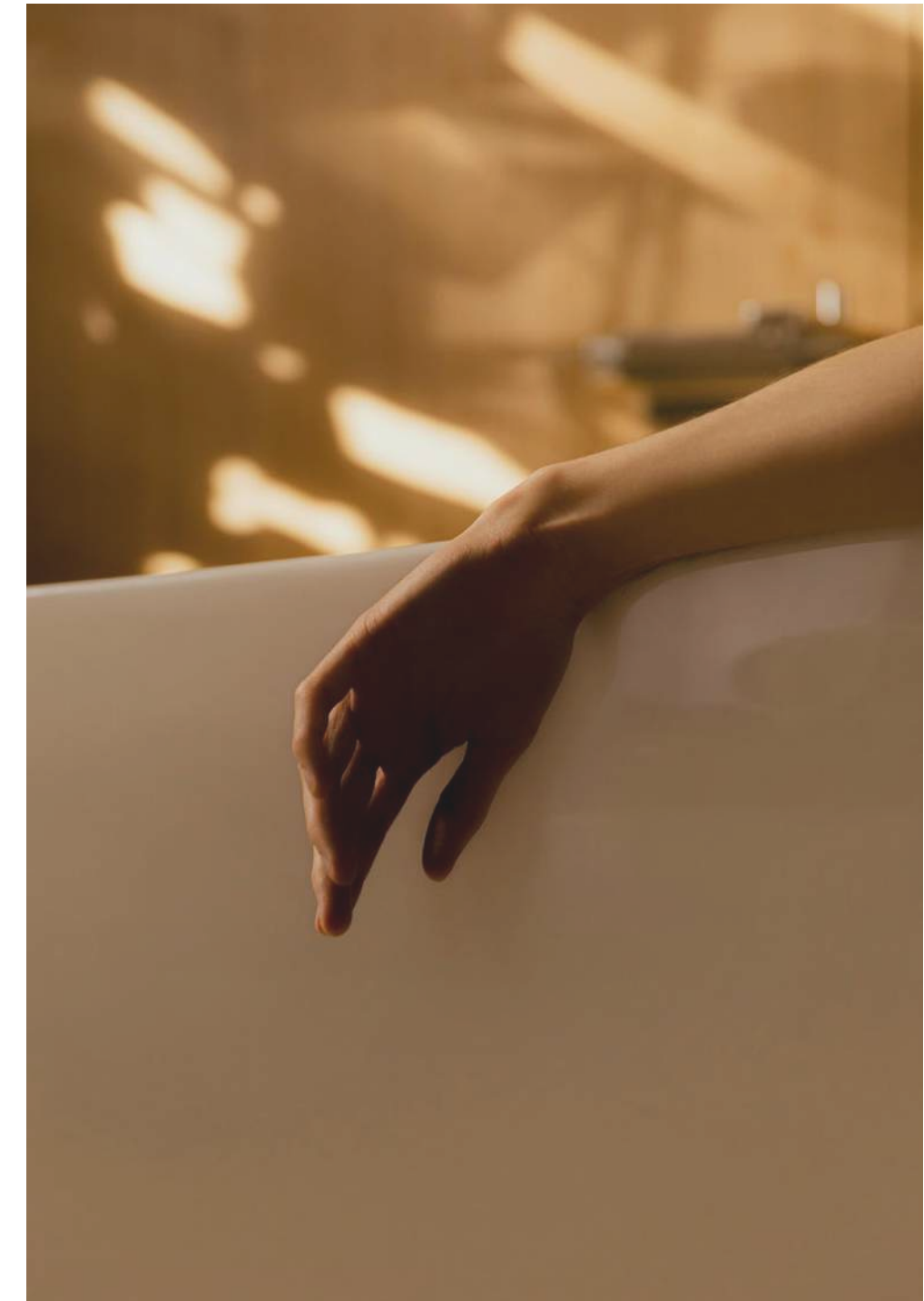
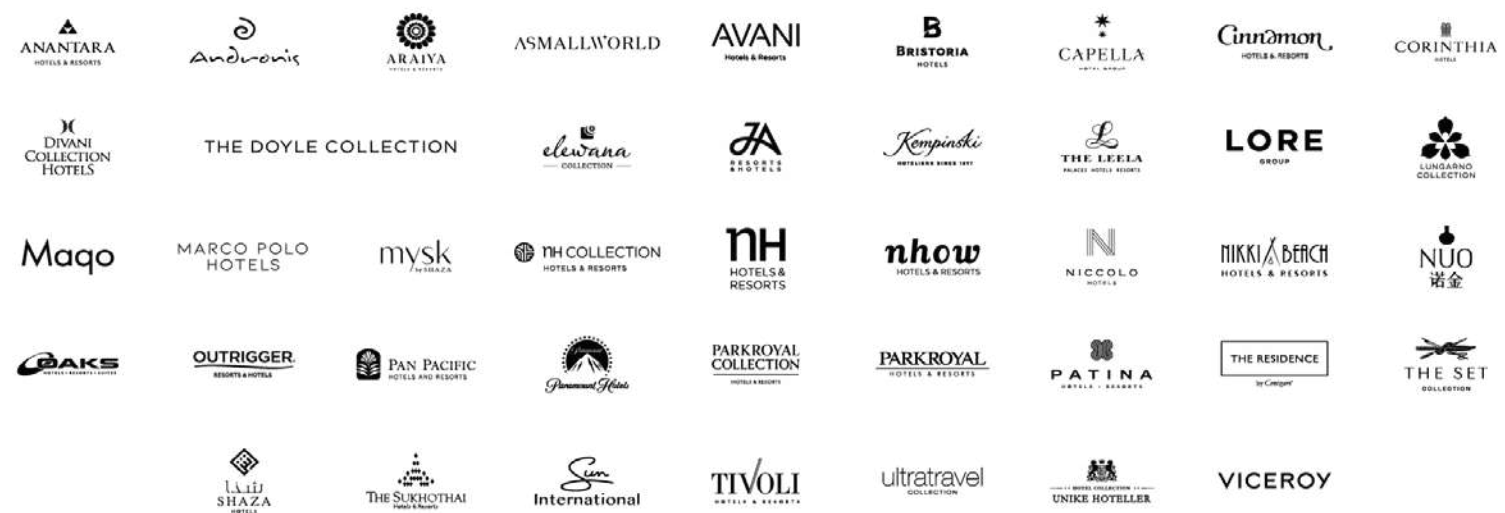
As an owner of an Anantara Residence, you are welcomed into the highest tier of our hotel loyalty programme, MINOR DISCOVERY Titanium status - an exclusive privilege typically reserved for members who complete 30 nights, spend USD 15,000, or stay across three different GHA DISCOVERY brands.

Enjoy exclusive benefits of MINOR DISCOVERY Titanium membership, including:

- 7% back in DISCOVERY dollars (D\$) rewards currency
- Double room upgrade*
- Complimentary breakfast at participating hotels
- Early check-in & late check-out*
- Partner benefits to secure more exclusive rewards
- Member rates at participating hotels
- Guaranteed room availability for bookings made up to 48 hours prior to arrival
- Member-only access to hotel amenities

*Subject to availability.

GHA DISCOVERY
REWARDING LIFE'S JOURNEYS







Anantara Hotels & Resorts brings authentic luxury to more than 50 destinations across Asia, the Middle East, the Indian Ocean, Africa and Europe. From bustling urban centres to remote island sanctuaries, we enable journeys of adventure and indulgence, connecting our guests to diverse people, places and stories around the world.

Each of our properties is uniquely designed to capture local charm in luxurious spaces, while our highly personalised experiences put travellers in touch with the true character of every destination.

COMBINING LUXURY WITH AUTHENTIC HOSPITALITY



Anantara Mina Ras Al Khaimah Resort boasts one of the destination's most enviable settings, a private peninsula of golden sands that overlooks lagoon then open ocean.

Anantara Spa offers traditional Thai healing rituals, as well as the brand's award-winning signature treatments. Leisure includes kids' and teens' clubs, a pool, gym and padel court. Enjoy the thrill of high-speed water sports, or more tranquil kayaking of the surrounding mangroves.



ABOUT RAK PROPERTIES

RAK Properties is a leading real estate developer committed to producing exceptional and sustainable destinations.

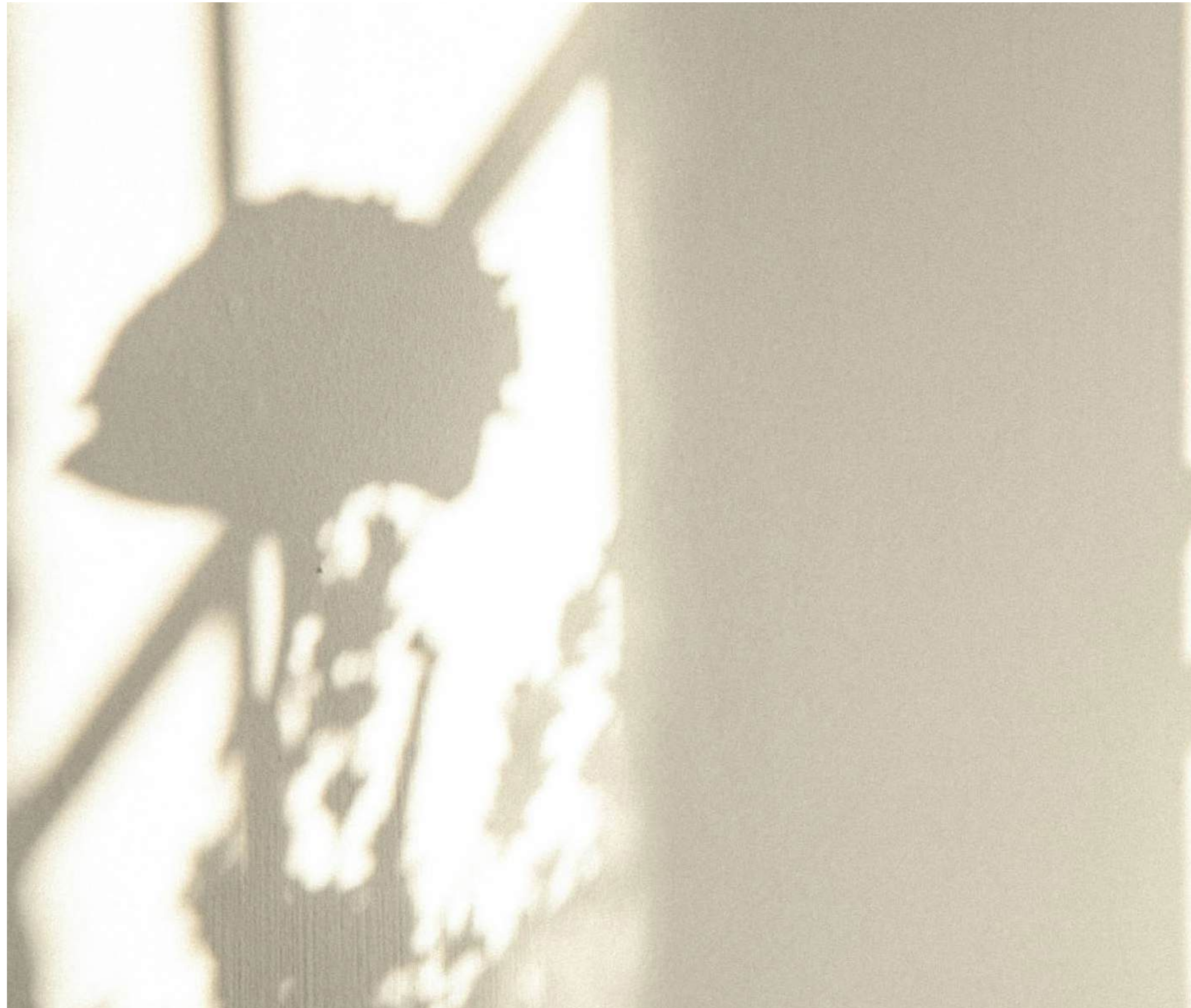
Specialising in contemporary and meticulously crafted communities, RAK Properties integrates excellence, innovation, and nature to create enriching lifestyles in alignment with the aspirations of tomorrow's people.

We play a pivotal role in achieving RAK Vision 2030, focusing on delivering economic, social, and environmental value, all aimed at enhancing lives and places, and contributing to the growing narrative of Ras Al Khaimah.

ABOUT JT+P

JT & Partners (JT+P) is an international multidisciplinary consultancy offering a comprehensive portfolio of services, including architecture, planning, engineering, project management, infrastructure, and cost consultancy. They specialise in hospitality, residential, commercial, mixed-use projects, and master-planning developments, delivering international design standards with local expertise. The team at JT+P has a proven track record of successfully delivering diverse projects globally, showcasing cultural diversity and innovation.

JT+P executes projects worldwide, covering regions such as the GCC, MENA, Asia, and Europe. Their commitment to sustainability, innovation, and efficient resource use ensures that projects meet the needs of clients and end-users alike. JT+P acts as partners in their clients' creative journeys, fostering a collaborative environment to optimise design solutions and realise excellence. With a balanced approach to environmental, social, and economic considerations, JT+P ensures that every opportunity is realised sustainably, consistently exceeding client expectations.



CONTACT

sales@rakproperties.ae
800 40 20



The artist representations and interior decorations, finishes, appliances and furnishings are provided for illustrative purposes only. The developer reserves the right to substitute materials, appliances, equipment, fixtures and other construction and design details specified. The use of any designations, labels or nomenclature is for marketing purposes only.