



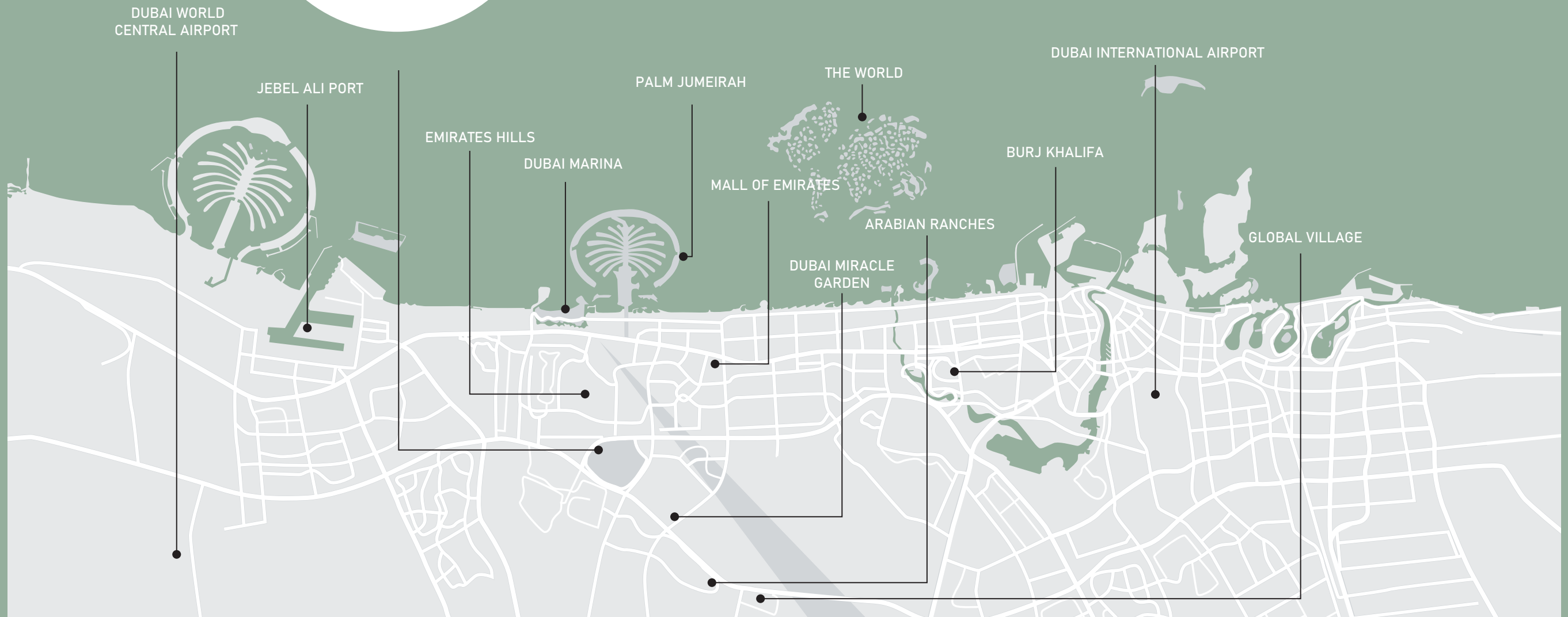
SUNSET GROVE
HOMES

WHERE EVERY DAY ENDS IN A

Tapestry
OF TRANQUILITY



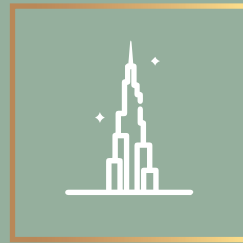
IDEAL
Dubai
LOCALE



MINUTES AWAY FROM

Landmark

DESTINATION



DOWNTOWN
DUBAI

10

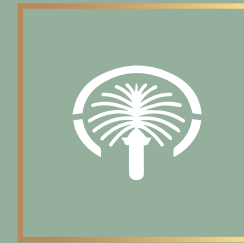
MINUTES



BURJ
AL ARAB

14

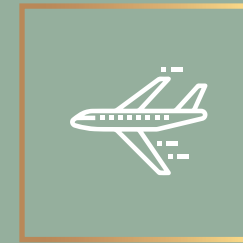
MINUTES



PALM
JUMEIRAH

14

MINUTES



DUBAI
INTERNATIONAL
AIRPORT

25

MINUTES

Located in Dubai, Jumeirah Village Circle stands as a vibrant, high-end community. Its residents enjoy a diverse selection of dining and shopping options, enjoying a sophisticated urban lifestyle in a safe and welcoming environment. Additionally, easy access to Central Dubai is facilitated by the nearby Sheikh Mohammed Bin Zayed Road.

Jumeirah

VILLAGE CIRCLE

Offers excellent connectivity to various colleges, schools, and landmarks. With multiple educational institutions within a short radius, residents enjoy easy access to quality education. Jumeirah Village Circle Dubai is home to over 2,000 residential units. The development has a village-like setting with parks and canals surrounding apartments, villas and townhouses. Village Circle Dubai is a one-stop destination with the city's best offerings in retail and dining.





PRESTIGIOUS ARCHITECTURAL ELEGANCE

Sunset Grove Homes epitomises prestige through its meticulously crafted project, reflecting the fervent passion and unwavering commitment of its creators. Within, an elegant ambience flawlessly merges with modern convenience to accommodate contemporary lifestyles. Enhanced by vibrant outdoor spaces and unique amenities, Sunset Grove Homes promises an unparalleled living experience.

www.sunsetgrovehomes.com



An Opulent Life



8 HOUSES



G+2 BUILDINGS



2 PARKINGS





SUNSET GROVE
HOMES

Ground Floor



BEDROOM



LIVING ROOM



DINING AREA



KITCHEN



BATHROOM





GROUND FLOOR ELEGANCE

The ground floor of your villa offers a spacious lounge radiating elegance and tranquillity. With a subtle colour scheme and abundant natural light, it offers an inviting retreat for relaxation and social gatherings alike.





VILLA DINING DELIGHT

The dining space on the ground floor of your villa is elegant yet festive. With a tasteful colour palate and ample natural light, it offers a delightful setting for tasteful culinary experiences.

STYLISH KITCHEN RETREAT

The modern kitchen offers a unified blend of functionality and style. With sleek appliances and ample counter space, it's a culinary haven for any aspiring chef.





A PEACEFUL BEDROOM WITH BATHROOM

On the tranquil ground floor of your villa in Sunset Grove Homes, Jumeirah Village Circle, Dubai, UAE, lies a serene bedroom haven. The attached bathroom continues the soothing ambience, offering a spa-like retreat with modern amenities for ultimate relaxation.





SUNSET GROVE
HOMES





First Floor



CORRIDOR



2x BEDROOMS



2x BATHROOMS



STUDY AREA



ELEGANT STAIRCASE VISTA

The stairs corridor on the first floor of your villa in Sunset Grove Homes displays spaciousness and charm. Its sweeping staircase and ornate railings create a grand entrance, offering a picturesque vista for residents and guests alike to enjoy.

EXPERIENCE THE MAGIC OF SLEEP

Transform your bedroom into a tranquil retreat haven. Soft hues, large wall windows and a subtle colour scheme create a serene space where you can unwind and feel refreshed.



VOGUISH BATHROOM

The bathroom of your home characterises contemporary elegance. With sleek fixtures, top-of-the-line fittings and luxurious amenities, it offers a relaxing retreat for rejuvenation and lessening.





SUNSET GROVE
HOMES



SUNSET GROVE
HOMES

www.sunsetgrovehomes.com



Second Floor



MASTER SUITE



BATHROOM



UTILITY ROOM



TERRACE



PRIVATE JACUZZI

A modern, minimalist bedroom interior. The room features a large bed with a light-colored headboard and a dark brown blanket. A white ottoman sits at the foot of the bed. To the left, a large TV is mounted on the wall above a low wooden console. A walk-in closet with glass doors is visible in the background. The room is lit with warm, ambient lighting from a curved mirror and recessed ceiling lights. A small potted plant sits on the console, and a cup of coffee is on the bedside table.

COSY COMFORT SPACE

Your master bedroom extends its comfort zone with the addition of a spacious walking closet providing ample storage for clothing and accessories. Your rooms offer layers of warmth with soft blankets, fluffy pillows and ambient lighting, ensuring you or your family members feel snug and relaxed.



STYLISH REJUVENATION

Exemplifying modern elegance, the bathroom on the second floor of your villa offers sleek fixtures, premium fittings, and luxurious amenities, providing a serene sanctuary for relaxation and rejuvenation.



MULTIPURPOSE UTILITY ROOM

We have designed your storeroom in such a way that it can be used as a multifunctional space with designated areas for storage and a convenient washing machine setup. To maximize efficiency and organization while streamlining your household chores with this versatile solution.





SUNSET GROVE
HOMES





Floor Plans



SUNSET GROVE
HOMES

4 BEDROOMS + PRIVATE POOL & JACUZZI

G+2
CORNER VILLA

TOTAL AREA	SQM	SQ. FT.
TOTAL BUILT UP AREA	288.26	3102.80
TOTAL PLOT AREA	368.1	3962.19

FLOOR TYPE	SQM	SQ. FT.
GROUND FLOOR BUILT UP AREA	124.88	1344.19
FIRST FLOOR BUILT UP AREA	92.79	998.78
SECOND FLOOR BUILT UP AREA	70.59	759.82
LANDSCAPE AREA	76.84	827.09
PARKING AREA	27.5	296.00



DISCLAIMER

The views, plans and layout shown are the artist's impression only. **Sunset Grove Homes** has the right to change these specifications, plans and amenities without prior notice in the interest of quality and timely delivery. We assure you that any such changes made will not, in any way, be detrimental to the quality of the building.



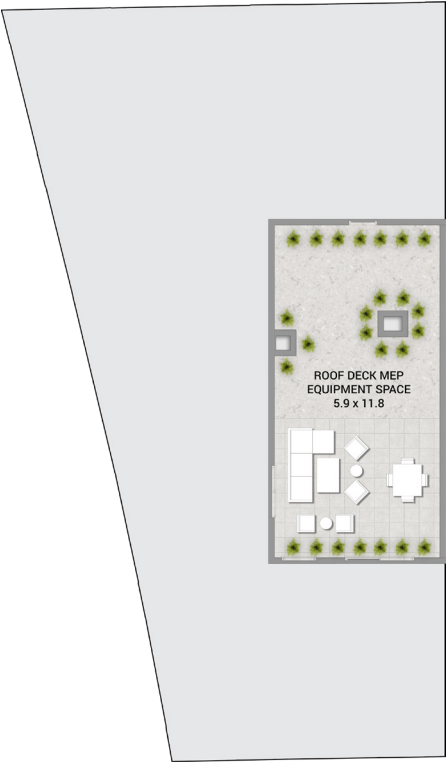
Ground
Floor



First
Floor



Second
Floor



Roof Top



SUNSET GROVE
HOMES

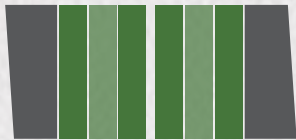
4 BEDROOMS & JACUZZI

G+2
MIDDLE VILLAS

TOTAL AREA	SQM	SQ. FT.
TOTAL BUILT UP AREA	261.32	2812.82
TOTAL PLOT AREA	156	1679.17

FLOOR TYPE	SQM	SQ. FT.
GROUND FLOOR BUILT UP AREA	97.99	1054.75
FIRST FLOOR BUILT UP AREA	92.74	998.24
SECOND FLOOR BUILT UP AREA	70.59	759.82
LANDSCAPE AREA	32.74	352.41
PARKING AREA	27.5	296.00

KEYPLAN

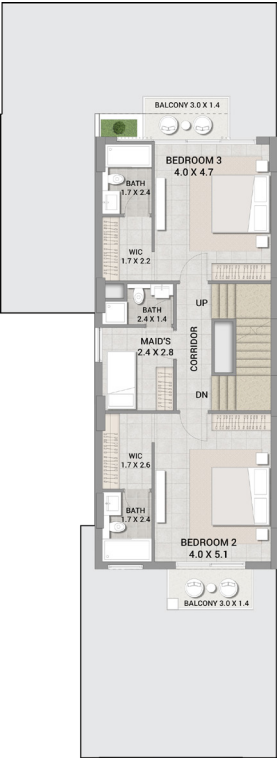


DISCLAIMER

The views, plans and layout shown are the artist's impression only. **Sunset Grove Homes** has the right to change these specifications, plans and amenities without prior notice in the interest of quality and timely delivery. We assure you that any such changes made will not, in any way, be detrimental to the quality of the building.



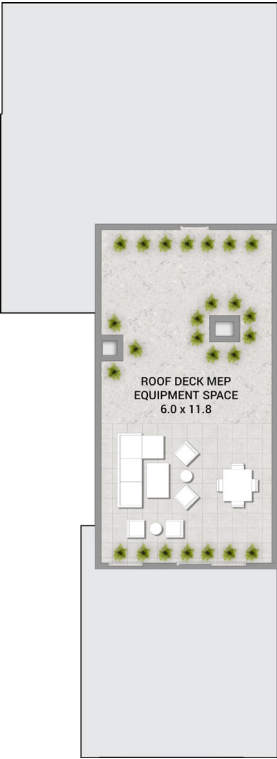
Ground
Floor



First
Floor



Second
Floor



Roof Top

PAYMENT PLAN

50/50

Downpayment 20%

4% Dubai Land Department Registration Charges

50%

AFTER 100% PROJECT HANDOVER

EXPECTED COMPLETION 3RD QUARTER - 2025



SUNSET GROVE
HOMES

VIRTUAL TOUR

CLICK HERE



SUNSET GROVE
HOMES



SUNSET GROVE HOMES



Each Villa Offers Unparalleled Comfort, Elegance, and Privacy.
Experience Opulent Amenities and Personalized Service in Your Slice of Paradise.

www.sunsetgrovehomes.com



DEVELOPER:



Head office: Suite 116, Al Asmawi Building on Sheikh Zayed Road, Dubai – U.A.E.

Site Office: Street No. 5, Plot No. 2080, Jumeirah Village Circle, Dubai – U.A.E.

Tel.: +971 4 5722502

Mob.: +971 50 8881550

Site Officer: +971 56 2425616

P.O. Box: 566697

Disclaimer: The views, plans and layout shown are the artist's impression only. **Sunset Grove Homes** has the right to change these specifications, plans and amenities without prior notice in the interest of quality and timely delivery. We assure you that any such changes made will not, in any way, be detrimental to the quality of the building.