

# CELESTE

by Westar

JUMEIRAH VILLAGE CIRCLE







# THE STORY

Westar Celeste captures the spirit of refined minimalism in its ensemble of 15 townhouses. This graceful development effortlessly integrates simplicity with meticulous attention to detail, giving rise to a design that not only emphasizes functionality but also welcomes innovation.

The intentional infusion of foliage and natural light elevates the residential experience, affording inhabitants breathtaking panoramic views that elicit a deep sense of tranquility.

Within Westar Celeste, the fusion of design components fosters a balanced environment, echoing contemporary aesthetics and a dedication to a peaceful lifestyle.



# JUMEIRAH VILLAGE

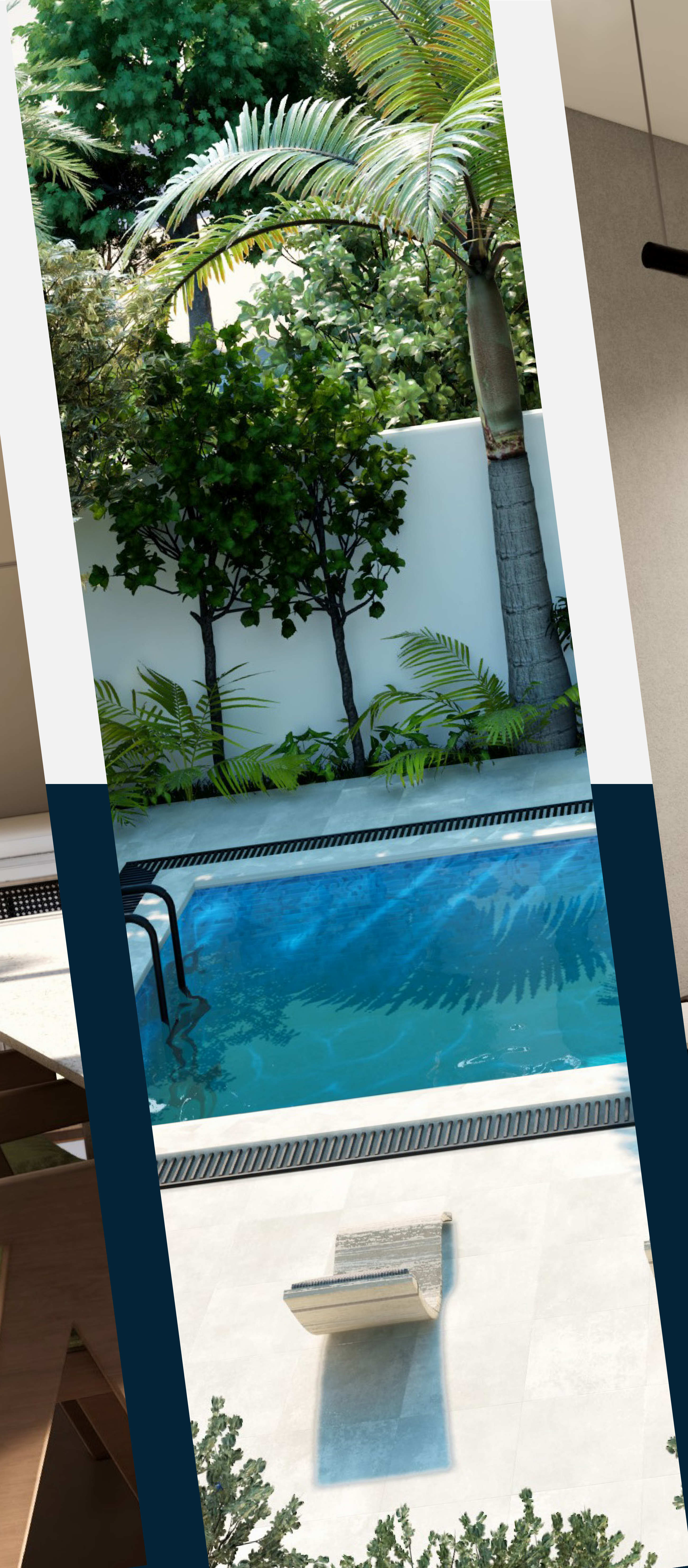
As a developer of more than \$30 billion of real estate in Dubai, Nakheel, has been instrumental in turning Dubai into one of the fastest growing cities in the world.

The creator of a variety of landmark developments including The Palm Island, & The World, Nakheel's developments have added more than 1000 km of waterfront to Dubai.

Part of Nakheel's distinctive Jumeirah Family set amid lush landscaping & unsurpassed leisure and lifestyle amenities; Jumeirah Village is a holistic living experience for its residents in the heart of Dubai's most desirable district.











# HIGH CEILINGS IN LIVING ROOM

In Westar Celeste, the living rooms showcase lofty ceilings that immediately elevate your residence, casting an air of luxury.

These elevated ceilings impart a sense of openness and lightness to your home, imbuing it with a dash of opulence.



# HOME AUTOMATION

All townhouses will come equipped with standard automation, featuring automated switches, door locks, and air conditioning. Curtains will be available as an optional addition, directly purchasable from the vendor.







# SPACIOUS MASTER BEDROOM

The expansive master bedrooms offer the convenience of effortlessly accommodating king-size beds while leaving generous space for additional furniture.

Unwind, stretch out, and relish your personal haven in comfort after a long day.



# BASEMENT DEN

At Westar, we take pride in enhancing the value of our developments. Consequently, each of our homes includes an expansive basement den that can be tailored to your preferences.

This versatile space can serve as a home office, a home theater, a games room, or a family lounge. Your imagination is the only limit.







# FITTED KITCHEN WITH APPLIANCES

Prepare pancakes for breakfast or indulge in crafting a gourmet dinner in our fully equipped kitchens, complete with appliances.

The kitchen's design introduces a streamlined aesthetic to your home, offering intelligent storage solutions and ample space for your meal preparation and cooking needs.



# POOL & BAR AREA

An ideal space to unwind and enjoy moments with family and friends. Escape the summer heat with a refreshing swim in the pool, or ignite the barbecue for a delightful meal.







# WESTAR PROPERTIES

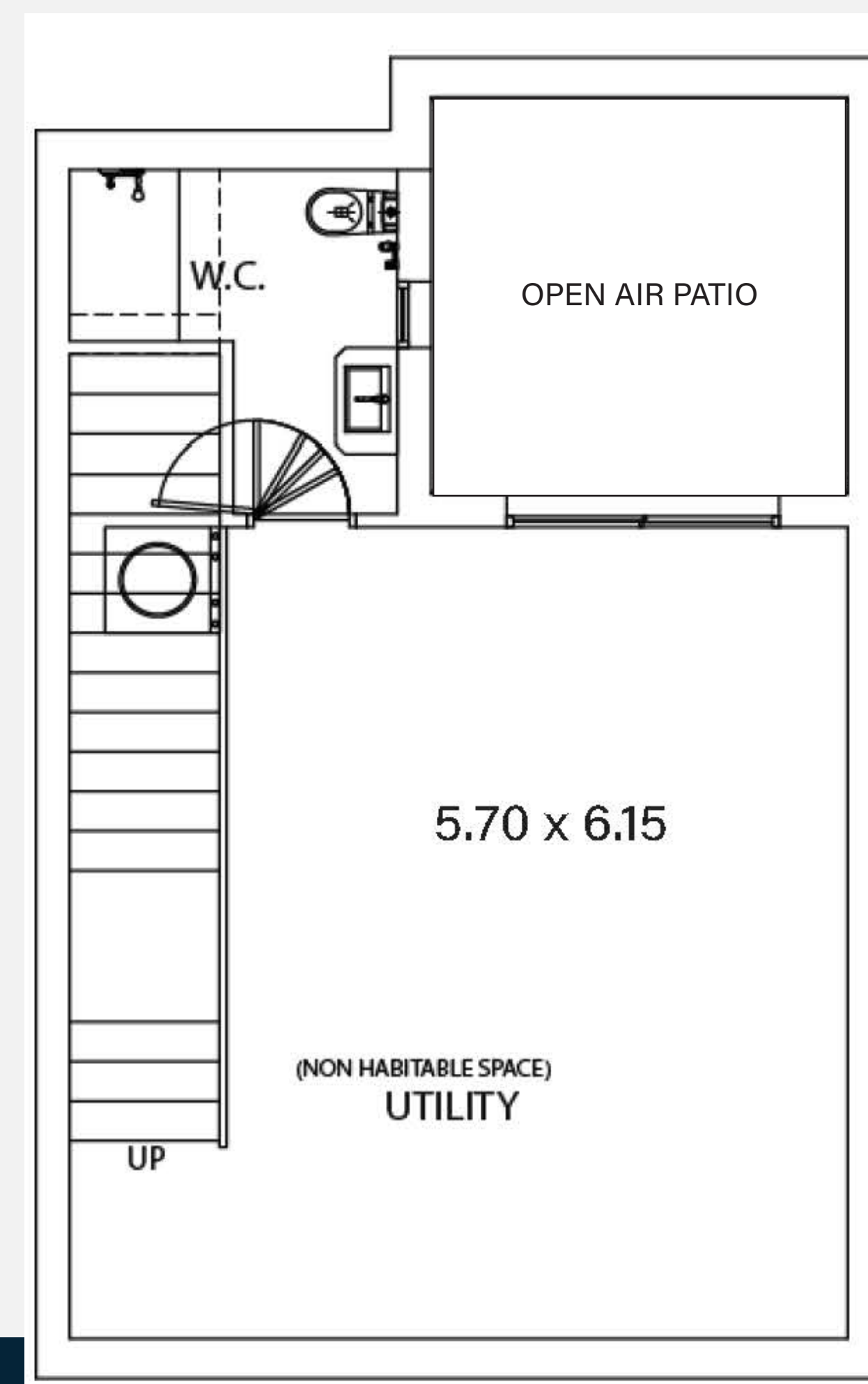
Since its inception in 2004, Westar has made an indelible mark on the Real Estate Sector of both the UAE and Nepal.

Westar values and understands each individual's needs and strives continually to ensure that our customers' satisfaction and expectations are not just met, but exceeded at all levels.

Westar benchmarks its service standards by adding competitive value across the board – especially where value addition is needed most.

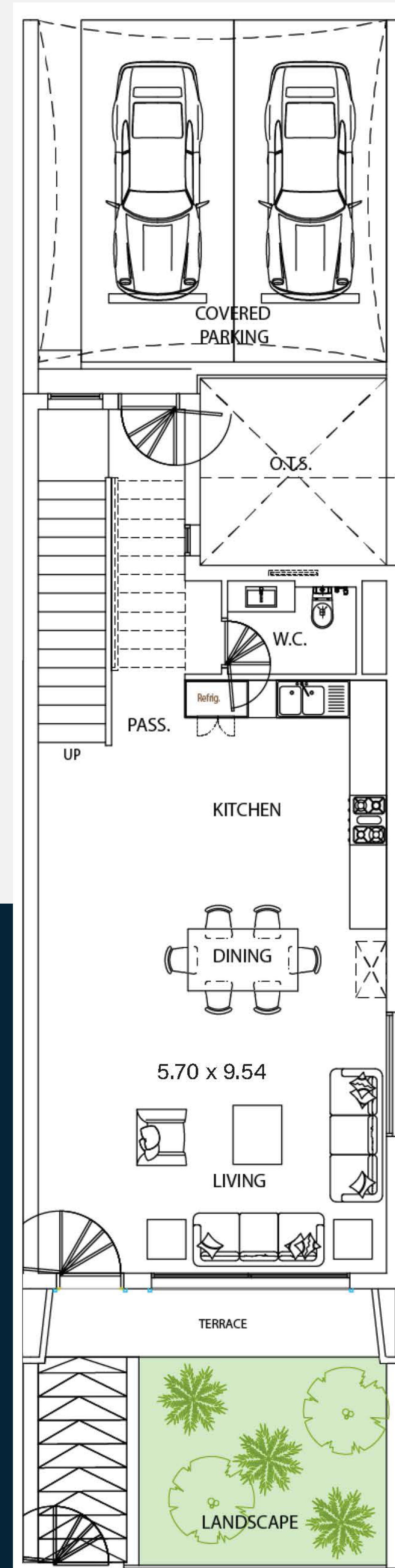


# FLOORPLAN



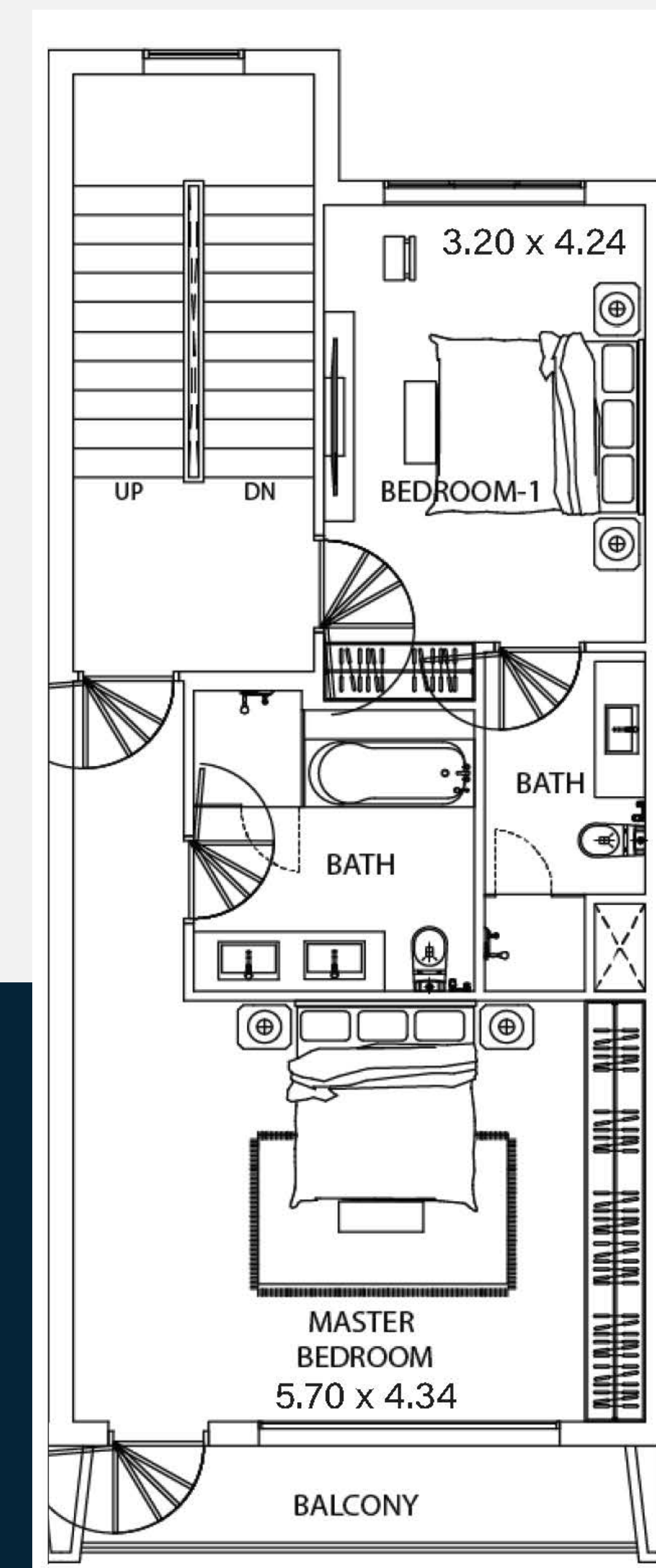
## BASEMENT

BUILT UP AREA: 511.29 SQFT  
PATIO AREA: 113.02 SQFT



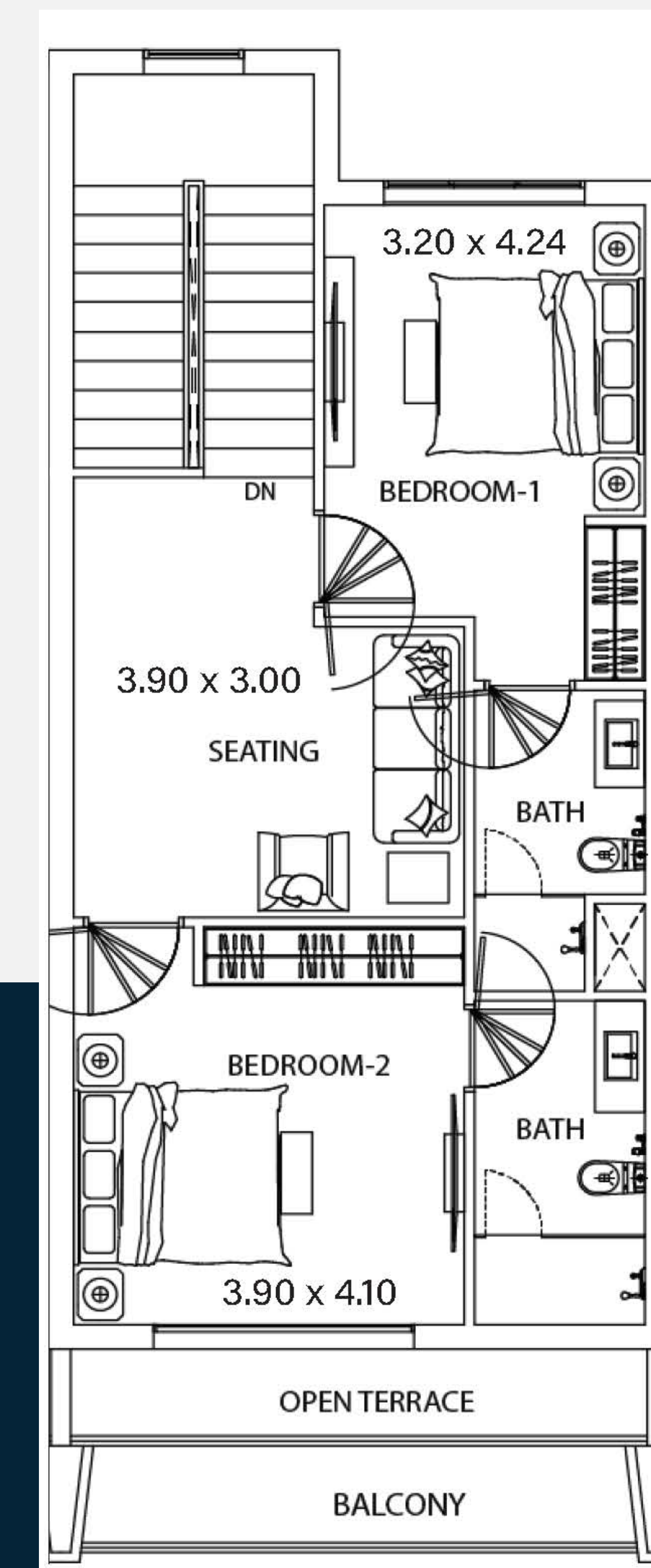
## GROUND FLOOR

BUILT UP AREA: 826.68 SQFT  
GARDEN AREA: 294.93 SQFT  
PARKING AREA: 371.36 SQFT



## FIRST FLOOR

BUILT UP AREA: 876.19 SQFT  
BALCONY AREA: 69.97 SQFT



## SECOND FLOOR

BUILT UP AREA: 811.61 SQFT  
BALCONY AREA: 64.05 SQFT

Floorplan of a typical unit.



# CELESTE by Westar



SALES & MARKETING BY



[info@sherwoodsproperty.com](mailto:info@sherwoodsproperty.com)  
[www.sherwoodsproperty.com](http://www.sherwoodsproperty.com)

+971 4 355 0094  
+971 50 897 7291 / +971 56 990 4921

